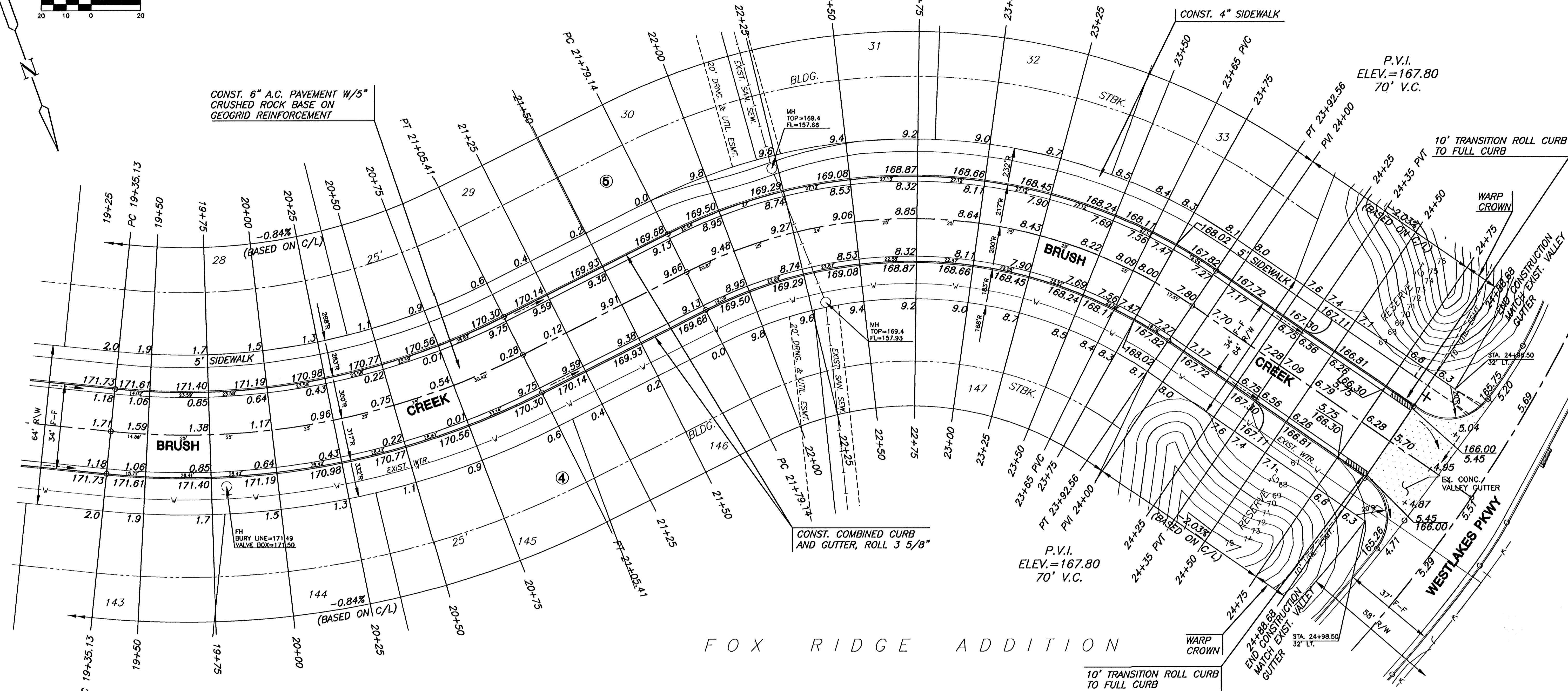


FOX RIDGE ADDITION



FOX RIDGE ADDITION

CURVE TABLE					
$\Delta = 32^{\circ}31'19''$ R = 300.00' T = 87.50' L = 170.28' LC = 168.01'					
CURVE DATA BASED ON CENTERLINE $\Delta/2 = 16^{\circ}15'39''$					
CHORD LENGTH					
STATION	ARC	8'Off LtCb	8'Off RtCb	DEFLECTION	TOTAL DEFLECTION
19+35.13	-	-	-	00'00'00"	00'00'00"
19+50.00	14.87'	13.83'	18.11'	01'25'12"	01'25'12"
19+75.00	25.00'	22.91'	27.08'	02'23'14"	03'48'28"
20+00.00	25.00'	22.91'	27.08'	02'23'14"	06'11'41"
20+25.00	25.00'	22.91'	27.08'	02'23'14"	08'34'55"
20+50.00	25.00'	22.91'	27.08'	02'23'14"	10'58'09"
20+75.00	25.00'	22.91'	27.08'	02'23'14"	13'21'24"
21+00.00	25.00'	22.91'	27.08'	02'23'14"	15'44'38"
21+05.41	5.41'	4.96'	5.87'	00'31'01"	16'15'40"

Def/Ft = 5.72958 Min.

CURVE TABLE					
$\Delta = 61^{\circ}08'22''$ R = 200.00' T = 118.14' L = 213.42' LC = 203.43'					
CURVE DATA BASED ON CENTERLINE $\Delta/2 = 30^{\circ}34'11''$					
CHORD LENGTH					
STATION	ARC	8'Off LtCb	8'Off RtCb	DEFLECTION	TOTAL DEFLECTION
21+79.14	-	-	-	00'00'00"	00'00'00"
22+00.00	20.86'	23.48'	18.24'	02'59'17"	02'59'17"
22+25.00	25.00'	28.11'	21.88'	03'34'52"	06'34'08"
22+50.00	25.00'	28.11'	21.88'	03'34'52"	10'09'00"
22+75.00	25.00'	28.11'	21.88'	03'34'52"	13'43'51"
23+00.00	25.00'	28.11'	21.88'	03'34'52"	17'18'43"
23+25.00	25.00'	28.11'	21.88'	03'34'52"	20'53'34"
23+50.00	25.00'	28.11'	21.88'	03'34'52"	24'28'26"
23+75.00	25.00'	28.11'	21.88'	03'34'52"	28'03'18"
23+92.56	17.56'	19.75'	15.36'	02'30'53"	30'34'11"

Def/Ft = 8.59437 Min.

LEGEND
 + STREET SIGN & SIGN LOCATION
 (SEE SIGN ASSEMBLY TABLE FOR TYPE & STATION OF SIGN)

NOTE:
 RIGHT OF WAY AREAS ADJACENT TO BERMS SHALL BE GRADED AS NECESSARY TO DRAIN TO STREETS. (SUBSIDIARY TO PROJECT)

MKEC
ENGINEERING CONSULTANTS
411 N. 98th ROAD
WICHITA, KS. 67209
316-684-9600

FOX RIDGE ADDITION - PHASE 1
PROJECT NAME

BRUSH CREEK
SHEET TITLE

DESIGN BY: DK RRT CHECKED BY: DK
DRAWN BY: BY: DATE: JOB NO. SHEET/OF

SEPTEMBER, 2003 99118E3 9 / 22