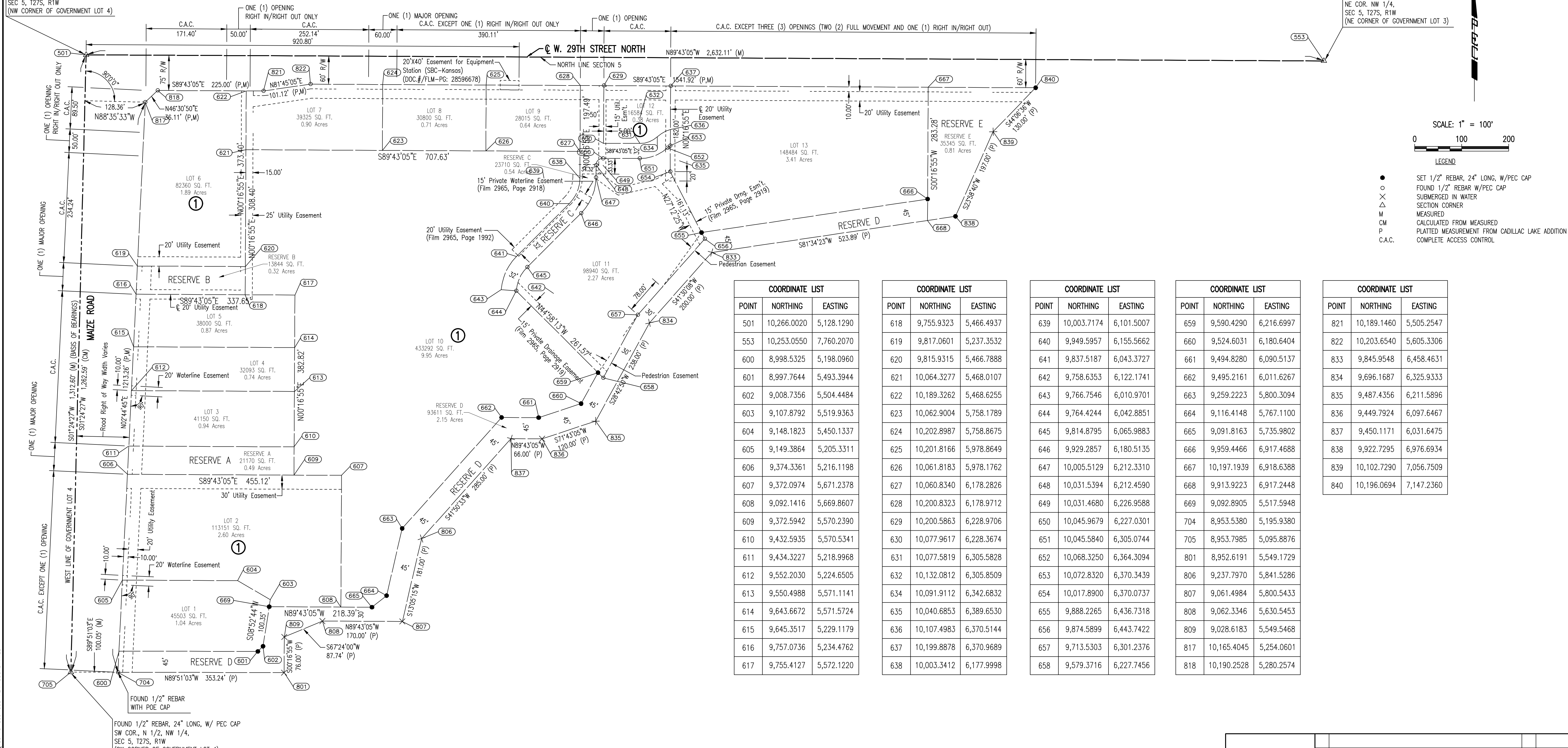


CADILLAC LAKE 2ND ADDITION TO WICHITA, SEDGWICK COUNTY, KANSAS BUBBLE MAP

FOUND 1/2" IRON PIPE IN THIMBLE
NW COR.
SEC 5, T27S, R1W
(NW CORNER OF GOVERNMENT LOT 4)

FOUND 1/2" IRON PIPE IN THIMBLE
NE COR. NW 1/4,
SEC 5, T27S, R1W
(NE CORNER OF GOVERNMENT LOT 3)



SCALE: 1" = 100'

- LEGEND
- SET 1/2" REBAR, 24" LONG, W/PEC CAP
 - FOUND 1/2" REBAR W/PEC CAP
 - × SUBMERGED IN WATER
 - △ SECTION CORNER
 - M MEASURED
 - CM CALCULATED FROM MEASURED
 - P PLATTED MEASUREMENT FROM CADILLAC LAKE ADDITION
 - C.A.C. COMPLETE ACCESS CONTROL

POINT	NORTHING	EASTING
501	10,266.0020	5,128.1290
553	10,253.0550	7,760.2070
600	8,998.5325	5,198.0960
601	8,997.7644	5,493.3944
602	9,008.7356	5,504.4484
603	9,107.8792	5,519.9363
604	9,148.1823	5,450.1337
605	9,149.3864	5,205.3311
606	9,374.3361	5,216.1198
607	9,372.0974	5,671.2378
608	9,092.1416	5,669.8607
609	9,372.5942	5,570.2390
610	9,432.5935	5,570.5341
611	9,434.3227	5,218.9968
612	9,552.2030	5,224.6505
613	9,550.4988	5,571.1141
614	9,643.6672	5,571.5724
615	9,645.3517	5,229.1179
616	9,757.0736	5,234.4762
617	9,755.4127	5,572.1220

POINT	NORTHING	EASTING
618	9,755.9323	5,466.4937
619	9,817.0601	5,237.3532
620	9,815.9315	5,466.7888
621	10,064.3277	5,468.0107
622	10,189.3262	5,468.6255
623	10,062.9004	5,758.1789
624	10,202.8987	5,758.8675
625	10,201.8166	5,978.8649
626	10,061.8183	5,978.1762
627	10,060.8340	6,178.2826
628	10,200.8323	6,178.9712
629	10,200.5863	6,228.9706
630	10,077.9617	6,228.3674
631	10,077.5819	6,305.5828
632	10,132.0812	6,305.8509
634	10,091.9112	6,342.6832
635	10,040.6853	6,389.6530
636	10,107.4983	6,370.5144
637	10,199.8878	6,370.9689
638	10,003.3412	6,177.9998

POINT	NORTHING	EASTING
639	10,003.7174	6,101.5007
640	9,949.5957	6,155.5662
641	9,837.5187	6,043.3727
642	9,758.6353	6,122.1741
643	9,766.7546	6,010.9701
644	9,764.4244	6,042.8851
645	9,814.8795	6,065.9883
646	9,929.2857	6,180.5135
647	10,005.5129	6,212.3310
648	10,031.5394	6,212.4590
649	10,031.4680	6,226.9588
650	10,045.9679	6,227.0301
651	10,045.5840	6,305.0744
652	10,068.3250	6,364.3094
653	10,072.8320	6,370.3439
654	10,017.8900	6,370.0737
655	9,888.2265	6,436.7318
656	9,874.5899	6,443.7422
657	9,713.5303	6,301.2376
658	9,579.3716	6,227.7456

POINT	NORTHING	EASTING
659	9,590.4290	6,216.6997
660	9,524.6031	6,180.6404
661	9,494.8280	6,090.5137
662	9,495.2161	6,011.6267
663	9,259.2223	5,800.3094
664	9,116.4148	5,767.1100
665	9,091.8163	5,735.9802
666	9,959.4466	6,917.4688
667	10,197.1939	6,918.6388
668	9,913.9223	6,917.2448
669	9,092.8905	5,517.5948
704	8,953.5380	5,195.9380
705	8,953.7985	5,095.8876
801	8,952.6191	5,549.1729
806	9,237.7970	5,841.5286
807	9,061.4984	5,800.5433
808	9,062.3346	5,630.5453
809	9,028.6183	5,549.5468
817	10,165.4045	5,254.0601
818	10,190.2528	5,280.2574

POINT	NORTHING	EASTING
821	10,189.1460	5,505.2547
822	10,203.6540	5,605.3306
833	9,845.9548	6,458.4631
834	9,696.1687	6,325.9333
835	9,487.4356	6,211.5896
836	9,449.7924	6,097.6467
837	9,450.1171	6,031.6475
838	9,922.7295	6,976.6934
839	10,102.7290	7,056.7509
840	10,196.0694	7,147.2360

Saved: 12-09-2018 6:07:03 PM by CSL
 Plot Scale: 1" = 100' - 12-09-2018 10:35:51 AM by CSL
 U:\Wichita-Civil\2018\180773\000\Drawings\180773-000-03-PLAT COORDINATES

No.	Revision	By	Date
-----	----------	----	------

WATER DISTRIBUTION SYSTEM IMPROVEMENTS
CADILLAC LAKE 2ND ADDITION - PHASE 2
PLAT COORDINATES

GARY JANZEN, P.E. - CITY ENGINEER
 CITY OF WICHITA PROJECT NO. 448-90833

PROFESSIONAL ENGINEERING CONSULTANTS, P.A.
 303 SOUTH TOPEKA WICHITA, KS 67202
 316-262-2691 www.pec1.com

Designed by JAG
 Drawn by CSL

Job No. 35-180773-0-42
 Date DECEMBER 2019

Sht. 3 of 13