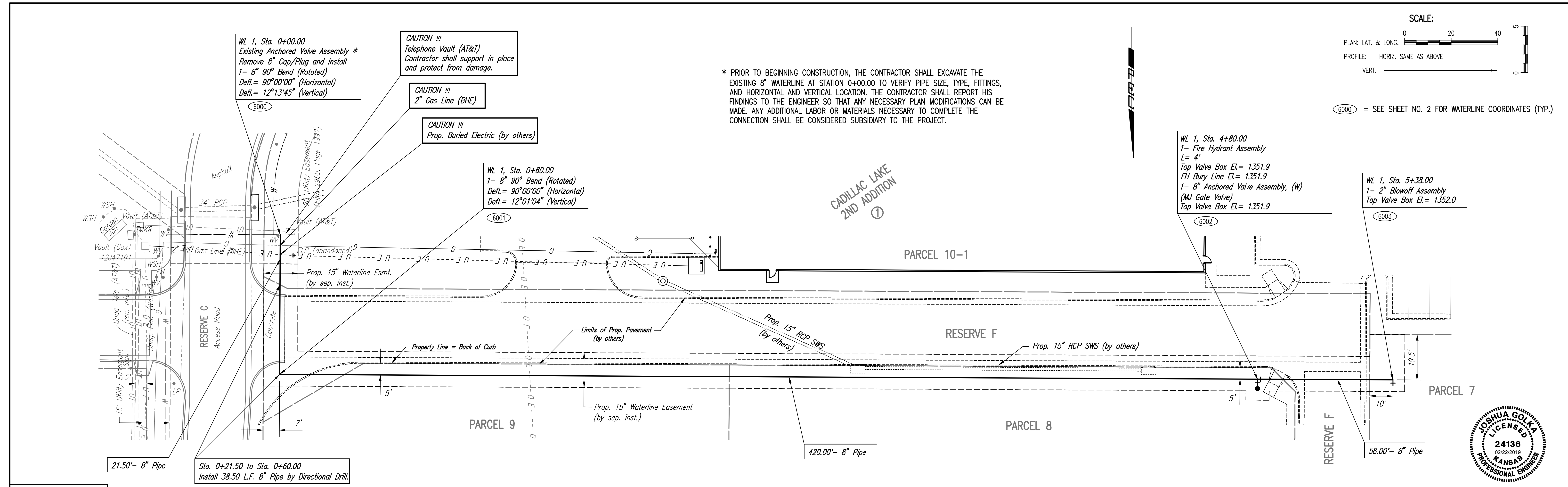


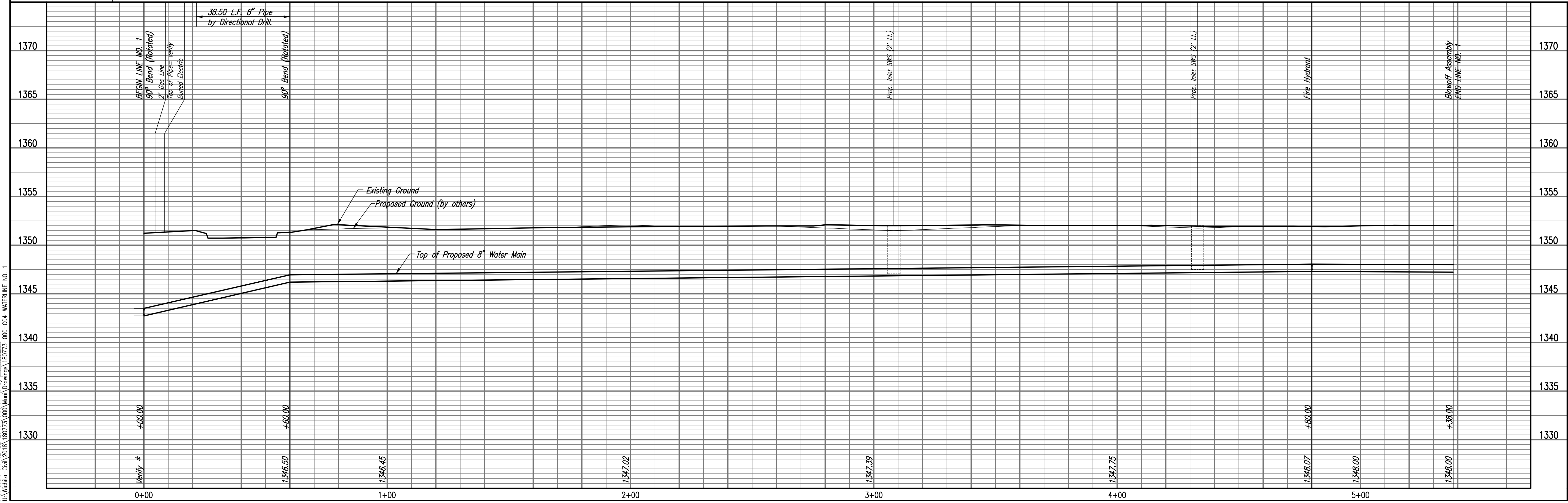
6000 = SEE SHEET NO. 2 FOR WATERLINE COORDINATES (TYP.)

\* PRIOR TO BEGINNING CONSTRUCTION, THE CONTRACTOR SHALL EXCAVATE THE EXISTING 8" WATERLINE AT STATION 0+00.00 TO VERIFY PIPE SIZE, TYPE, FITTINGS, AND HORIZONTAL AND VERTICAL LOCATION. THE CONTRACTOR SHALL REPORT HIS FINDINGS TO THE ENGINEER SO THAT ANY NECESSARY PLAN MODIFICATIONS CAN BE MADE. ANY ADDITIONAL LABOR OR MATERIALS NECESSARY TO COMPLETE THE CONNECTION SHALL BE CONSIDERED SUBSIDIARY TO THE PROJECT.



Unless noted otherwise, elevations shown are top of pipe

WATERLINE NO. 1



WATERLINE NO. 1  
 WATER DISTRIBUTION SYSTEM IMPROVEMENTS  
 CADILLAC LAKE 2ND ADDITION - PHASE 2

PROFESSIONAL ENGINEERING CONSULTANTS, P.A.  
 308 SOUTH TOPEKA WICHITA, KS 67202  
 316-262-2691 www.pec1.com

Designed By JAG  
 Drawn By CSL

Job No. 35-180773-0-42  
 Date DECEMBER 2019

GARY JANZEN, P.E. - CITY ENGINEER  
 CITY OF WICHITA PROJECT NO. 448-90833

Saved: 02-22-2019 10:32:42 AM by KURTIS DEKAT  
 Plot Scale: 1" = 40'-0" (Horizontal) 1" = 5'-0" (Vertical)  
 U:\Wichita-Civil\2018\180773\000\Wm\Drawings\180773-000-004-WATERLINE NO. 1