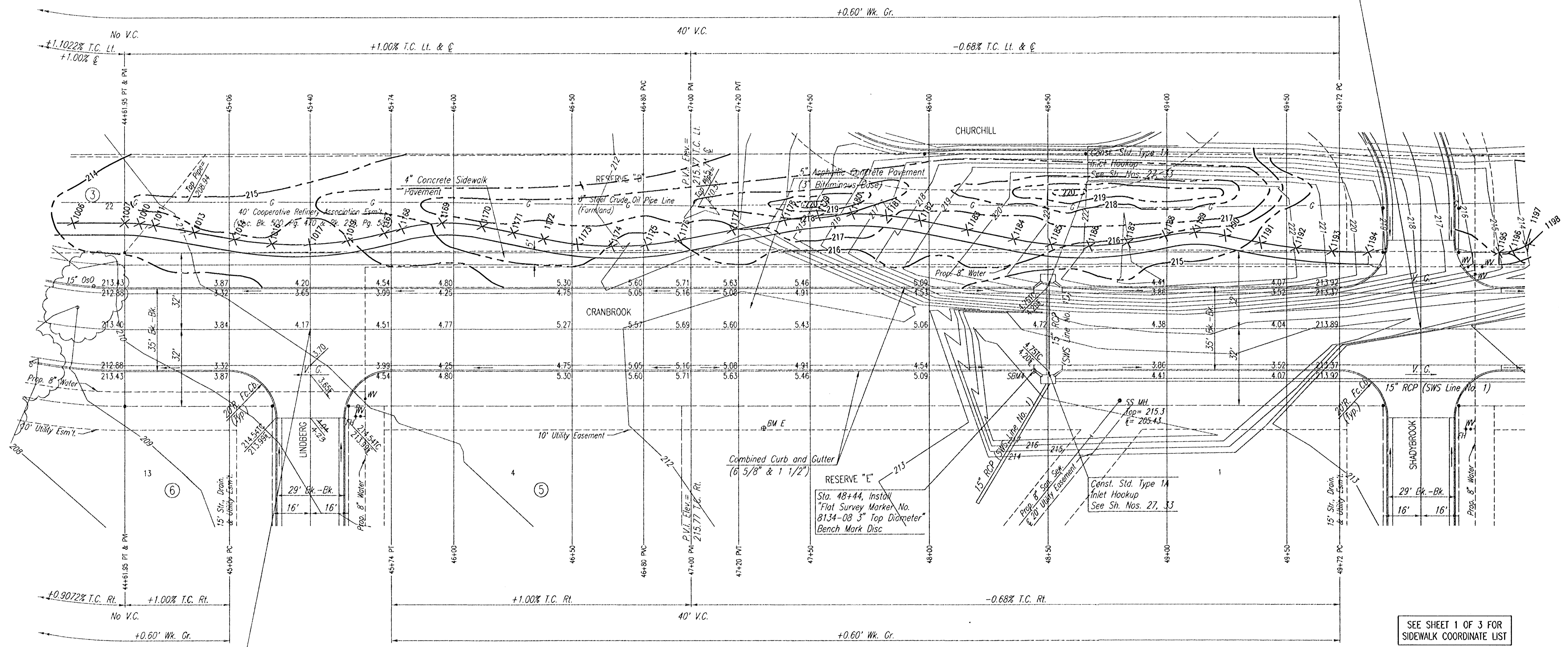


SCALE: 1"=20'

Sta. 50+06.00 @ Cranbrook=
Sta. 73+17.84 @ Shadybrook



SEE SHEET 1 OF 3 FOR
SIDEWALK COORDINATE LIST

RECORD DRAWING

Bradley 24 NOV 03
REMINGTON PLACE - PHASE 2

CRANBROOK
STA. 44+61.95 TO STA. 49+72.00
(REVISED WALK)
SHEET 2 OF 3

Professional Engineering Consultants, P.A.
303 S. TOPEKA • WICHITA, KANSAS 67202
316-262-2691 • FAX 316-262-3003

Designed by	BER	Checked by	
Drawn by	DEP	Date	DEC., 2002
		Job No.	02398

DSNR: BER OPER: ILS SCALE: 1"=20.00
 C:\2002\02398\0001\CRANBROOKS2- Walk rev 11-20-2003 04:04:47 pm