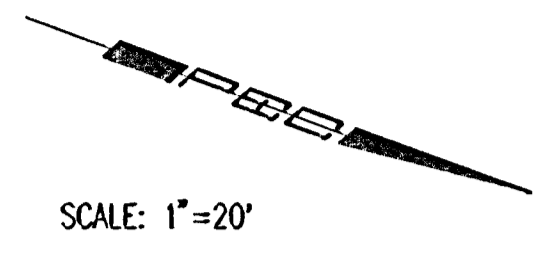
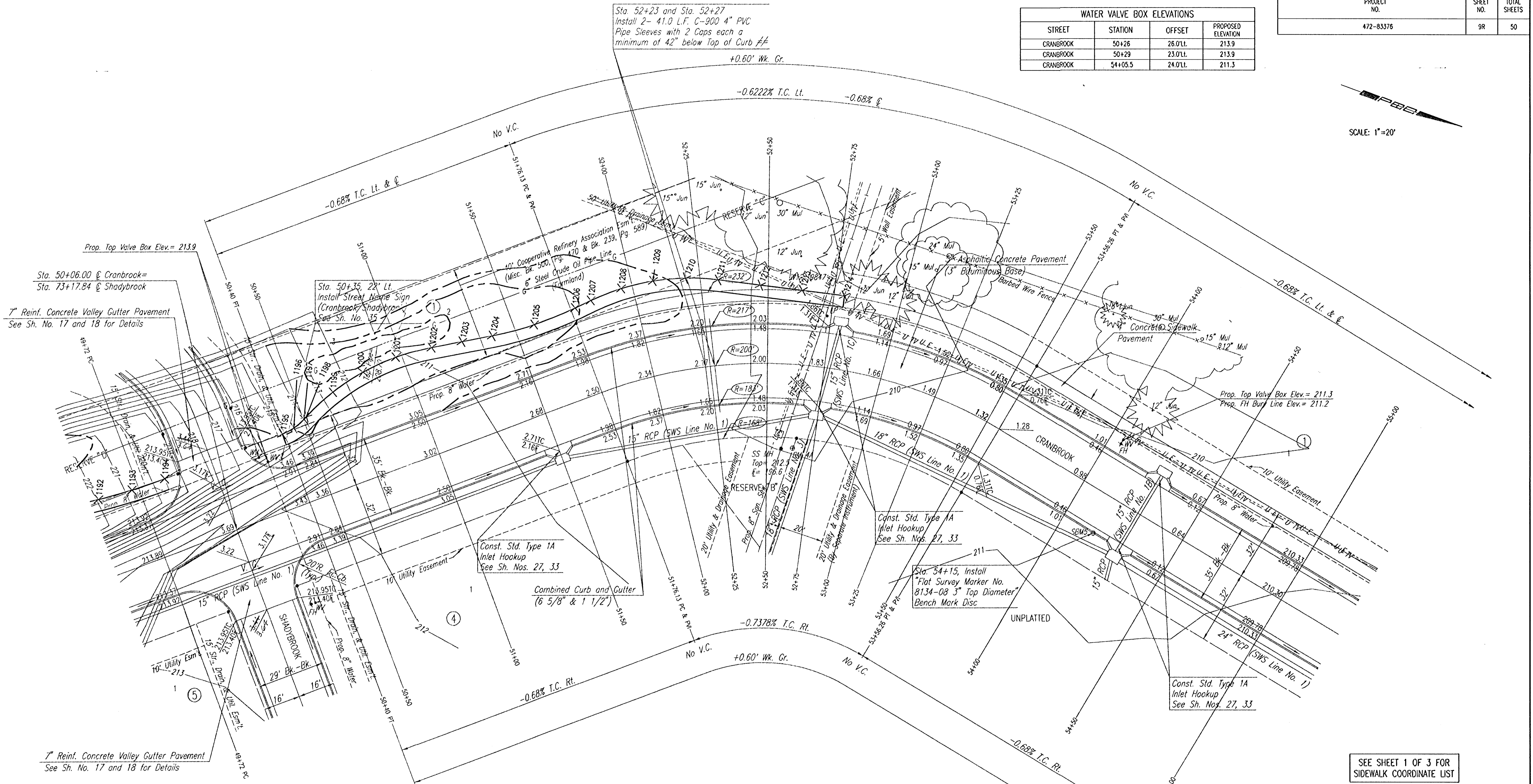


WATER VALVE BOX ELEVATIONS			
STREET	STATION	OFFSET	PROPOSED ELEVATION
CRANBROOK	50+26	26.0'LT.	213.9
CRANBROOK	50+29	23.0'LT.	213.9
CRANBROOK	54+05.5	24.0'LT.	211.3



SCALE: 1"=20'

Sta. 52+23 and Sta. 52+27
Install 2- 41.0 L.F. C-900 4" PVC
Pipe Sleeves with 2 Caps each a
minimum of 42" below Top of Curb #/



Δ=51°36'10" D=28°38'52" R=200.00' L=180.13' T=96.69' E=22.15'

Δ/2=25°48'05"

STATION	ARC LENGTH	FACE CURB LENGTH		CHORD LENGTH		DEFLECTION ANGLE	TOTAL DEFLECTION
		LEFT CURB	RIGHT CURB	8' OFF LEFT FACE CURB	8' OFF RIGHT FACE CURB		
51+76.13						0°00'00"	0°00'00"
52+00	23.87'	25.90'	21.84'	26.84'	20.87'	3°25'09"	3°25'09"
52+25	25.00'	27.13'	22.88'	28.11'	21.86'	3°34'51.5"	7°00'01"
52+50	25.00'	27.13'	22.88'	28.11'	21.86'	3°34'51.5"	10°34'52.5"
52+75	25.00'	27.13'	22.88'	28.11'	21.86'	3°34'51.5"	14°09'44"
53+00	25.00'	27.13'	22.88'	28.11'	21.86'	3°34'51.5"	17°44'37"
53+25	25.00'	27.13'	22.88'	28.11'	21.86'	3°34'51.5"	21°19'29"
53+50	25.00'	27.13'	22.88'	28.11'	21.86'	3°34'51.5"	24°54'21"
53+56.26	6.26'	6.79'	5.73'	7.04'	5.48'	0°53'47"	25°48'05"
TOTAL	180.13'	195.47'	164.85'				Def./ft.=8.594256 min.

#/ EACH END OF 4" PVC PIPE SLEEVE SHALL BE MARKED WITH STEEL "I" POSTS OR 2" STEEL PIPE A MAXIMUM OF 12" ABOVE GRADE. PIPE, CAPS, PIPE INSTALLATION AND MARKERS SHALL BE SUBSIDIARY TO "COMBINED CURB AND GUTTER (6 5/8" & 1 1/2)".

SEE SHEET 1 OF 3 FOR SIDEWALK COORDINATE LIST

RECORD DRAWING
Professional Engineering Consultants, P.A.
24 NOV 03

REMINGTON PLACE - PHASE 2
CRANBROOK
STA. 49+72.00 TO STA. 55+00.00
(REVISED WALK)
SHEET 3 OF 3

Designed by	BER	Checked by	
Drawn by	DEP	Date	DEC. 2002
		Job No.	02398

DSNR: BER OPER: ILS SCALE: 1"=20.00
 CA: 2002\02398\0001\CRANBROOKS3-Walk rev 11-20-2003 04:06:11 pm