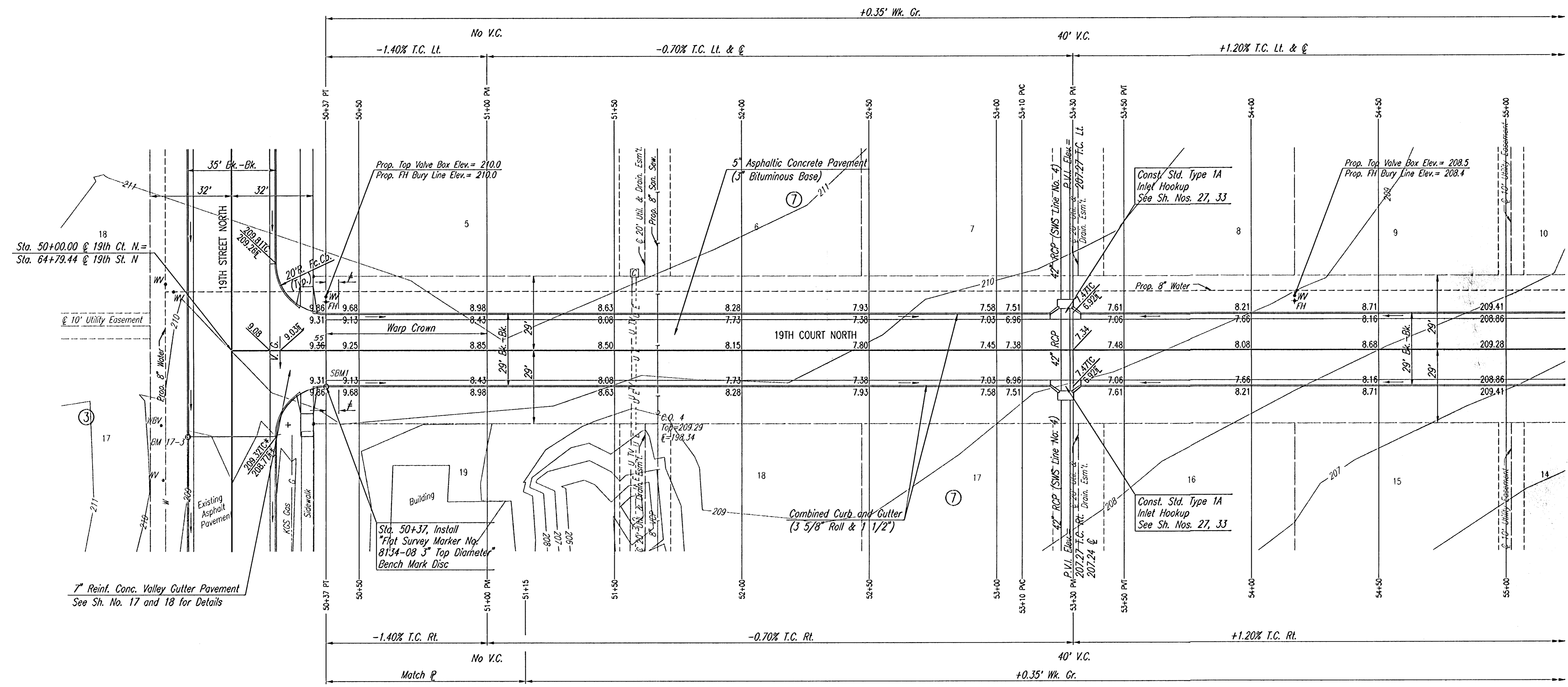


PROJECT NO.	SHEET NO.	TOTAL SHEETS
472-83376	13	50

WATER VALVE BOX ELEVATIONS			
STREET	STATION	OFFSET	PROPOSED ELEVATION
19TH COURT NORTH	50+37	21.0'LL	210.0
19TH COURT NORTH	54+17	21.0'LL	208.5

SCALE: 1"=20'



NOTE: THIS STREET TO BE CONSTRUCTED WITH ROLL-TYPE CURB. TOP OF CURB ELEVATIONS GIVEN ARE FOR FULL HEIGHT CURB.

* MATCH EXISTING
 ≠ 5' TRANSITION FROM MONOLITHIC EDGE CURB (6 5/8") TO COMBINED CURB AND GUTTER (3 5/8" ROLL & 1 1/2"). TO BE BID AND PAID FOR AS "COMBINED CURB AND GUTTER (3 5/8" ROLL & 1 1/2)".

RECORD DRAWING

REMINGTON PLACE - PHASE 2

19TH COURT NORTH
 STA. 50+00.00 TO STA. 55+00.00

Professtional Engineering Consultants, P.A.
 303 S. TOPEKA • WICHITA, KANSAS 67202
 316-262-2691 • FAX 316-262-3003

Designed by	BER	Checked by	
Drawn by	DEP	Date	DEC, 2002
		Job No.	02398

DSNR: DEP OPER: DEP SCALE: 1"=20.00
 CA:2002\02398\000\19THCIS1 12-03-2002 03:14:39 pm