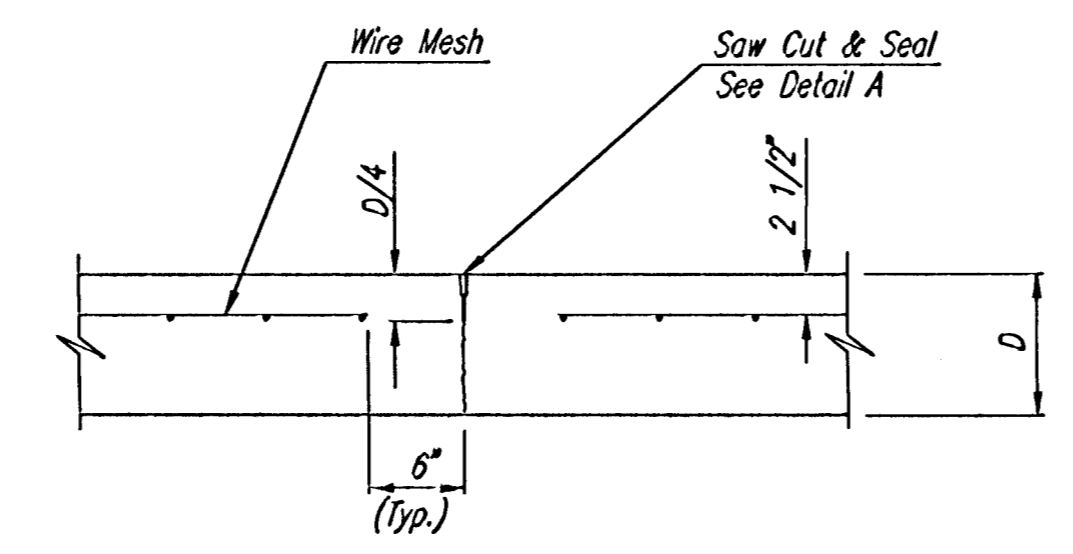
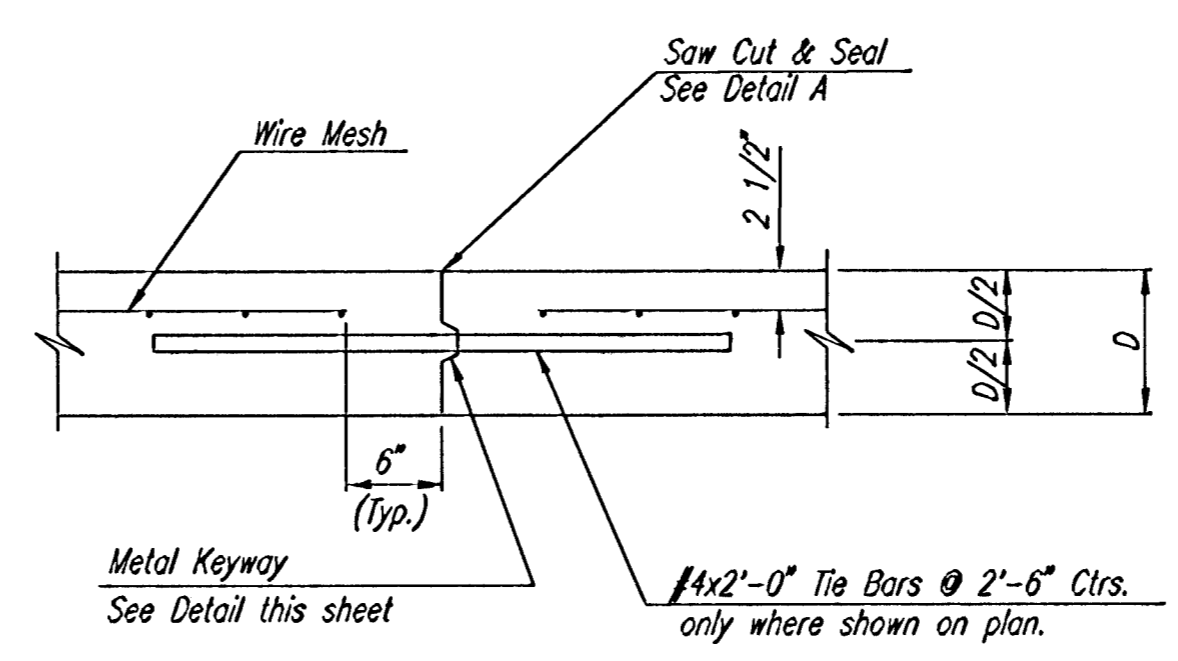


SECTION A-A
(MONOLITHIC EDGE CURB)

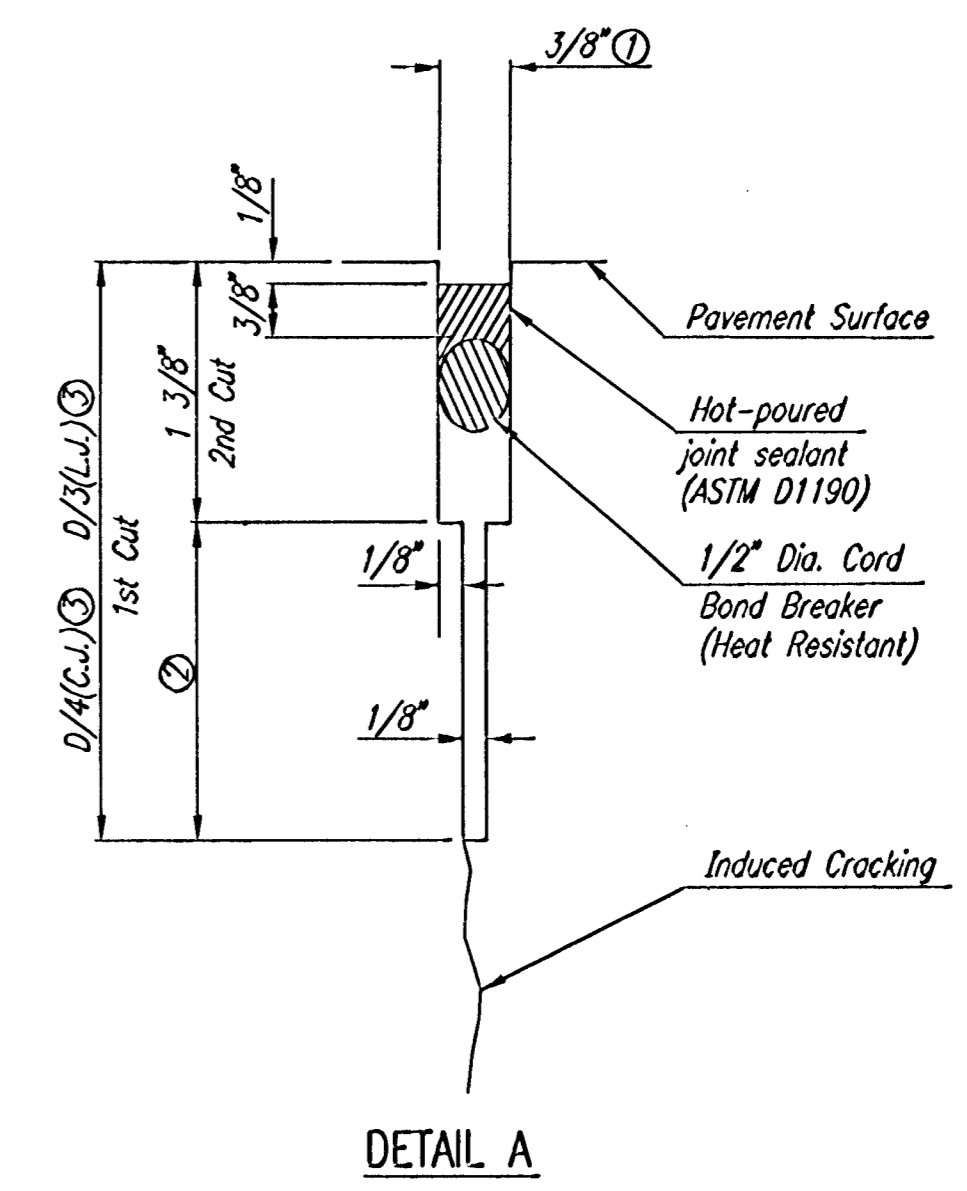
NOTE: OMIT REINFORCING MESH AT ALL JOINTS
NOTE: ALL CONCRETE VALLEY CUTTER REINFORCEMENT SHALL BE ADEQUATELY SUPPORTED BY BAR CHAIRS IN THE REQUIRED POSITION UNLESS APPROVED OTHERWISE BY THE ENGINEER.



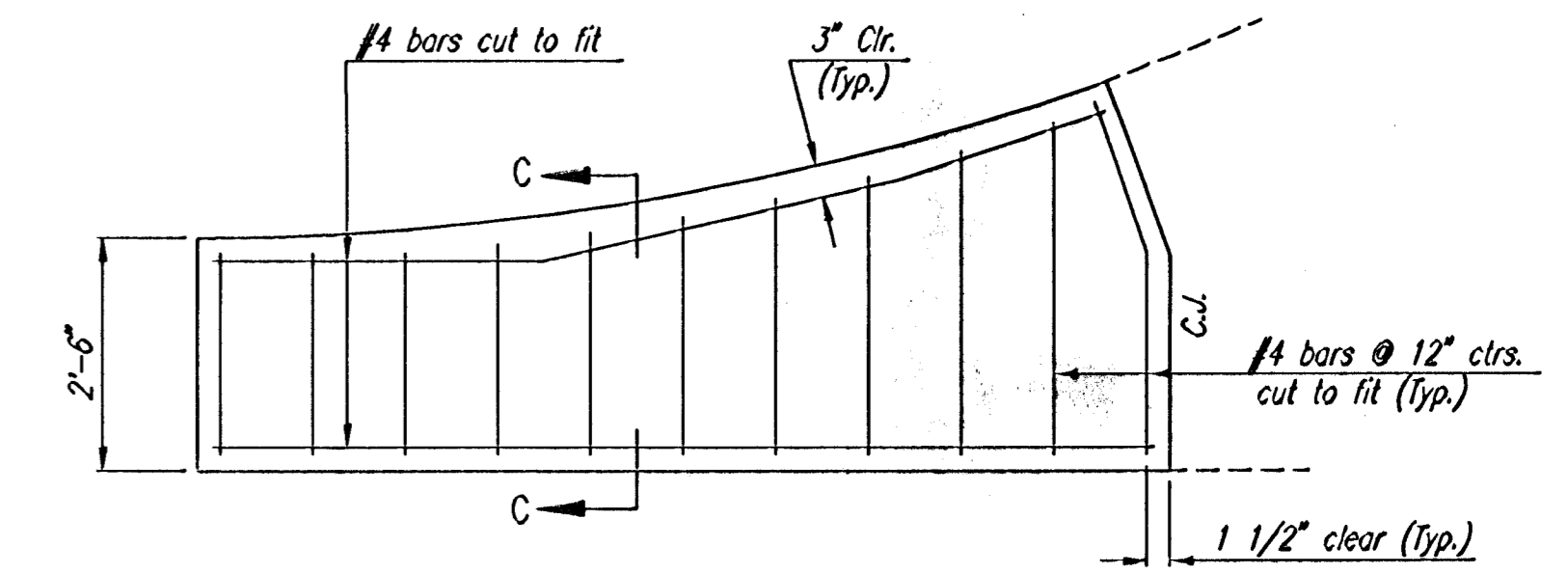
CONTRACTION JOINT DETAIL
REINFORCED PAVEMENT
(C.J.)



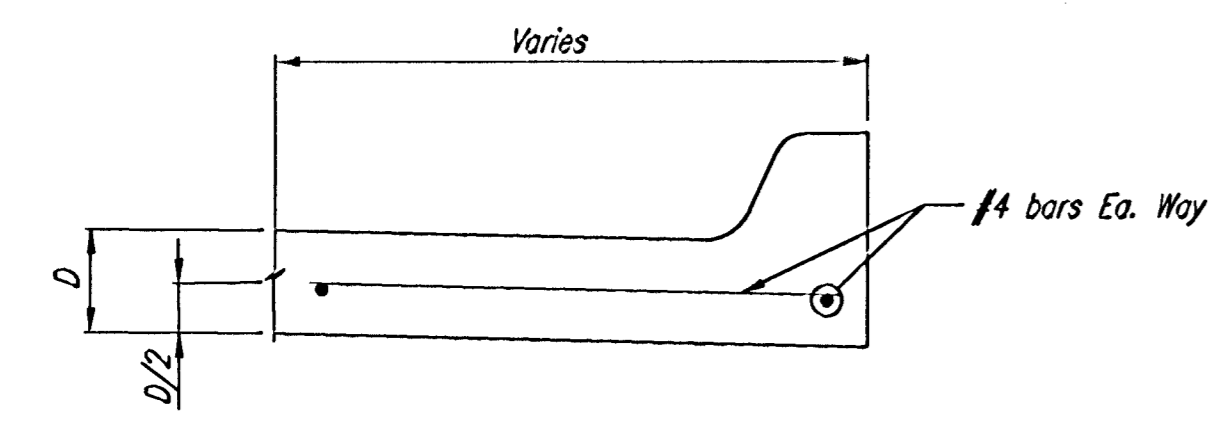
LONGITUDINAL CONSTRUCTION JOINT DETAIL
REINFORCED PAVEMENT
(TRANSVERSE SECTION)
(ALTERNATE L.J.)



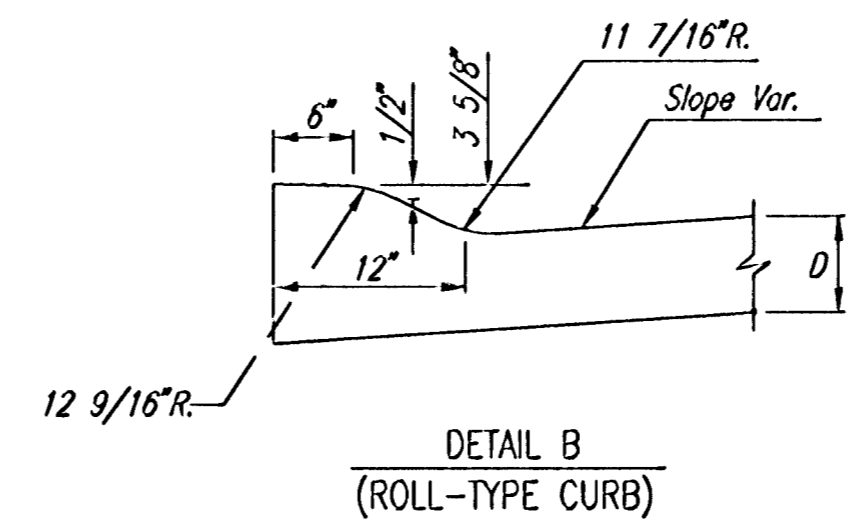
- To be accomplished in 2 cuts for Longitudinal Joints and Contraction Joints. Initial cut to be 1/8" wide.
- Eliminate bottom of cut when metal keyway is used as part of Longitudinal or Transverse Construction Joint and at Doweled Construction Joint Locations.
- 1 1/2" Minimum



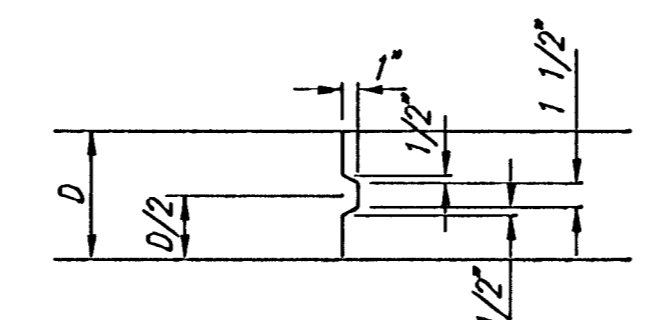
WING REINFORCING DETAIL
NOTE: OMIT WIRE FABRIC REINFORCING IN THIS SECTION.



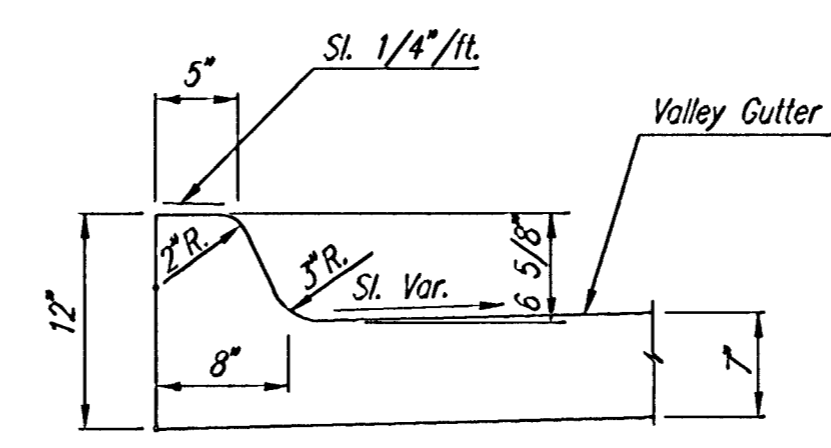
SECTION C-C
(MONOLITHIC EDGE CURB)



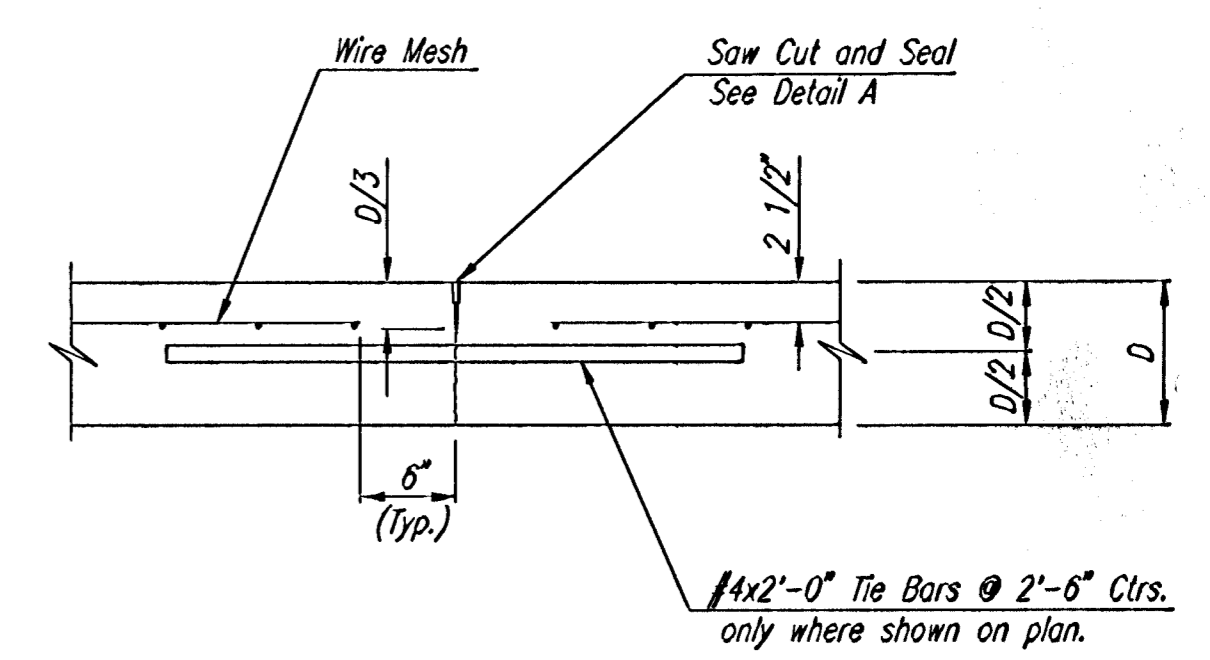
DETAIL B
(ROLL-TYPE CURB)



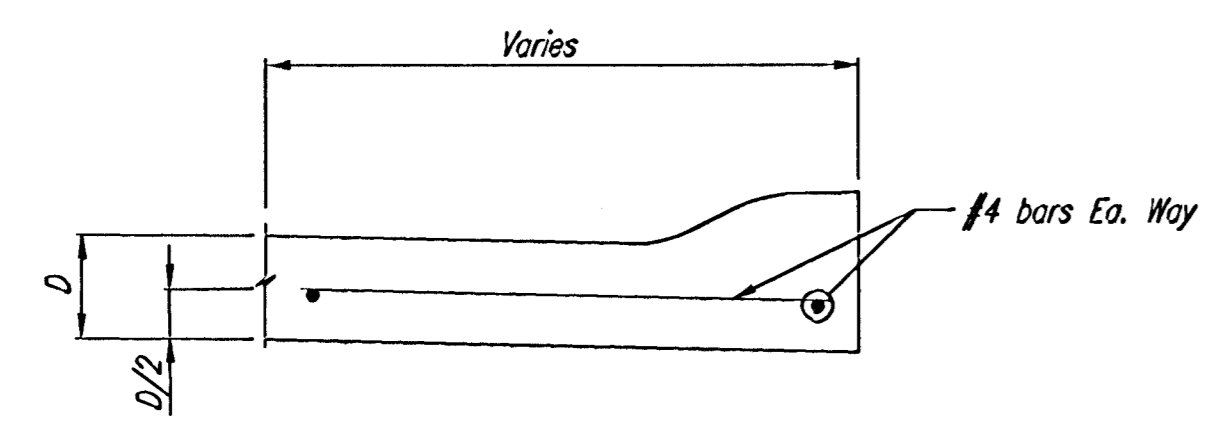
KEYWAY DETAIL



DETAIL B
(MONOLITHIC EDGE CURB)



LONGITUDINAL JOINT DETAIL
REINFORCED PAVEMENT
(TRANSVERSE SECTION)
(L.J.)



SECTION C-C
(ROLL-TYPE CURB)

RECORD DRAWING

Eric J. Colvard 24 NOV 03

REMINGTON PLACE - PHASE 2

VALLEY GUTTER DETAILS

Professional Engineering Consultants, P.A.
303 S. TOPEKA • WICHITA, KANSAS 67202
316-262-2691 • FAX 316-262-3003

Designed by	BER	Checked by	
Drawn by	DEP	Date	DEC., 2002
		Job No.	02398