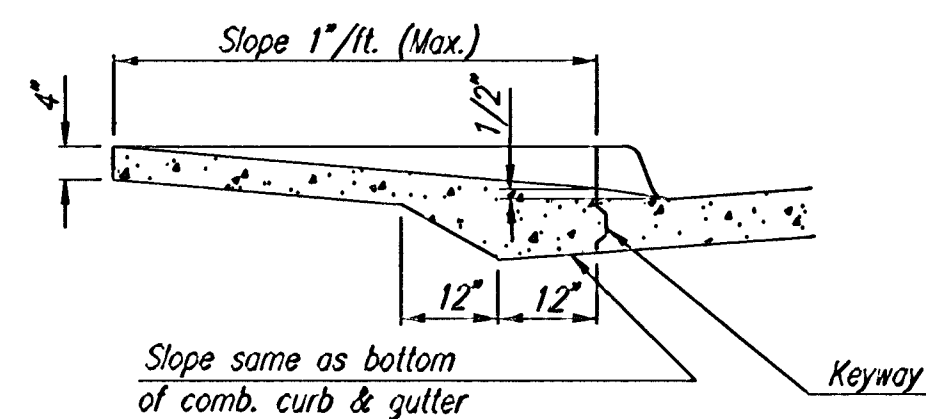
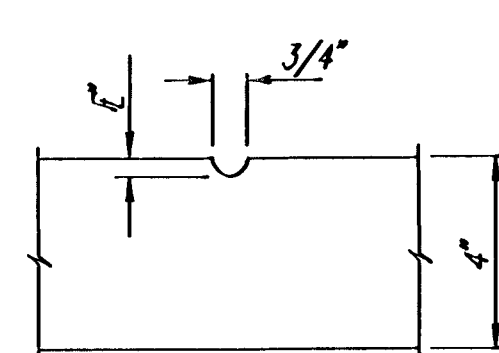


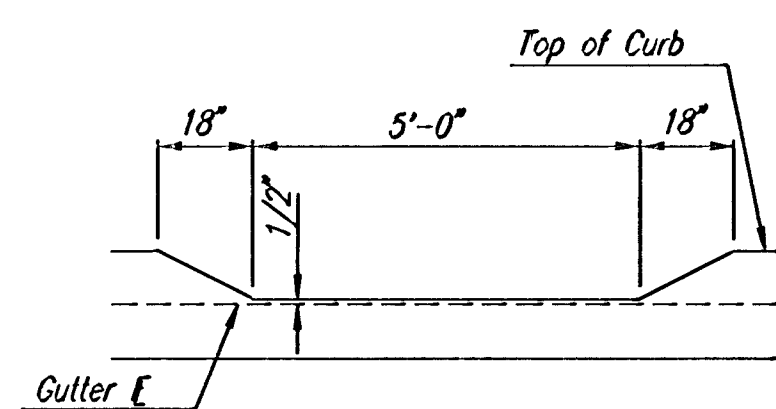
WHEELCHAIR RAMP DETAIL



SECTION A-A



GROOVE DETAIL



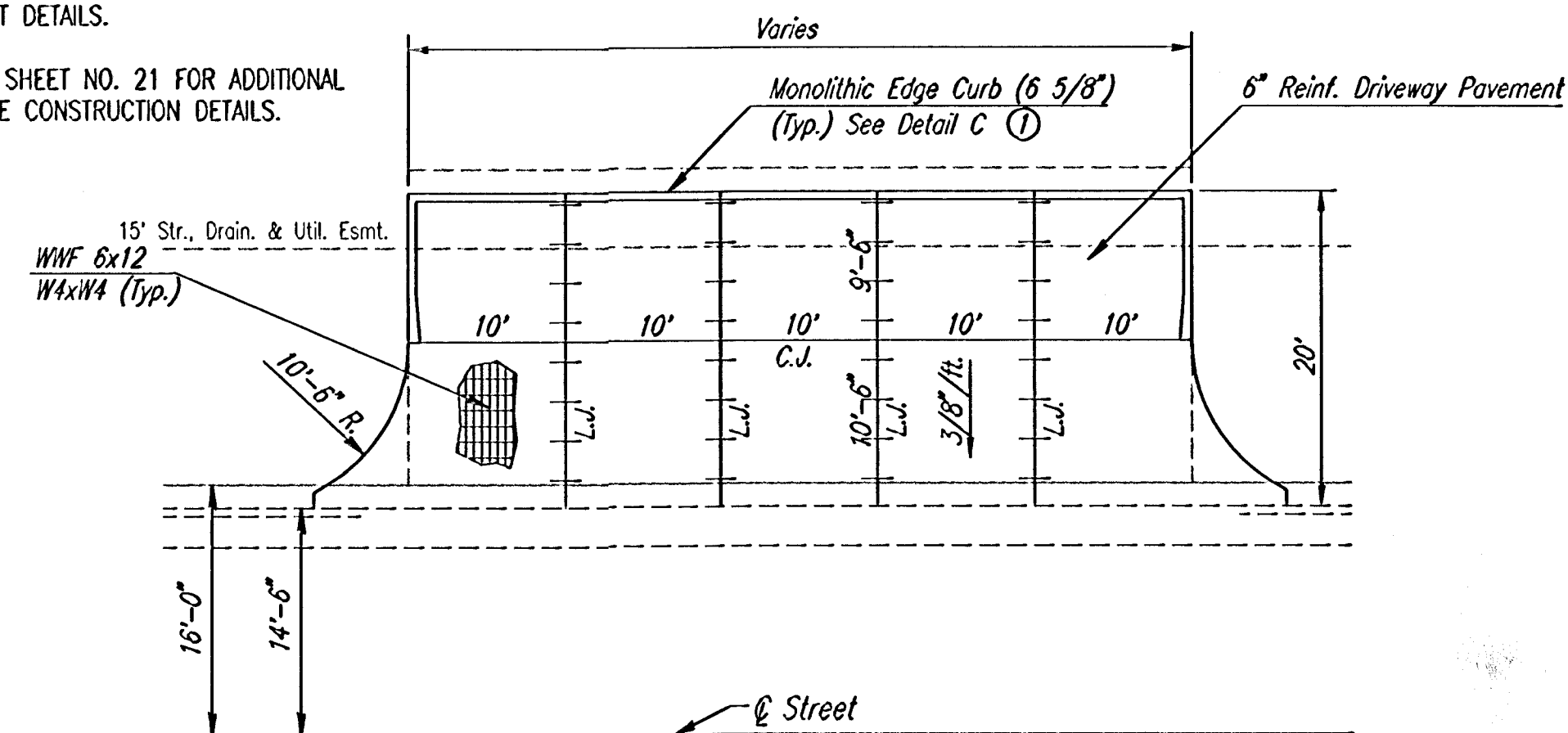
DEPRESSED CURB DETAIL

TYPICAL WHEELCHAIR RAMP DETAILS

6"x12" W4xW4 WIRE FABRIC REINFORCING SHALL BE PLACED SUCH THAT THE WIRES WITH THE 6" SPACING WILL RUN PARALLEL WITH THE LONGITUDINAL JOINT.

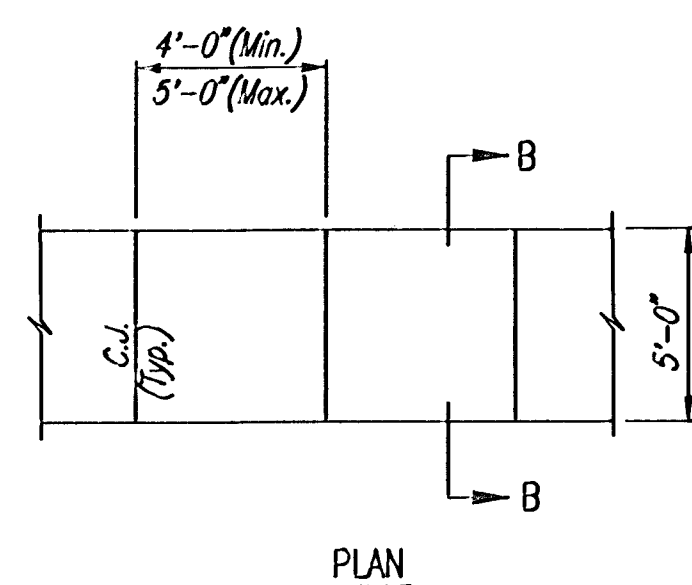
SEE SHEET NO. 18 FOR JOINT DETAILS.

SEE SHEET NO. 21 FOR ADDITIONAL DRIVE CONSTRUCTION DETAILS.

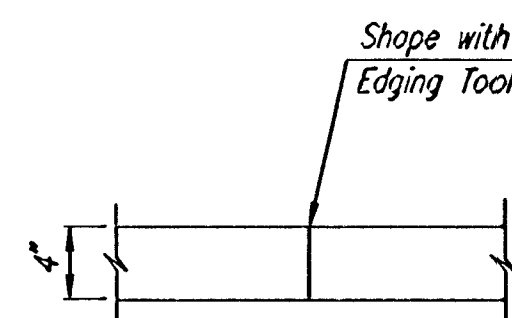


DRIVEWAY DETAILS

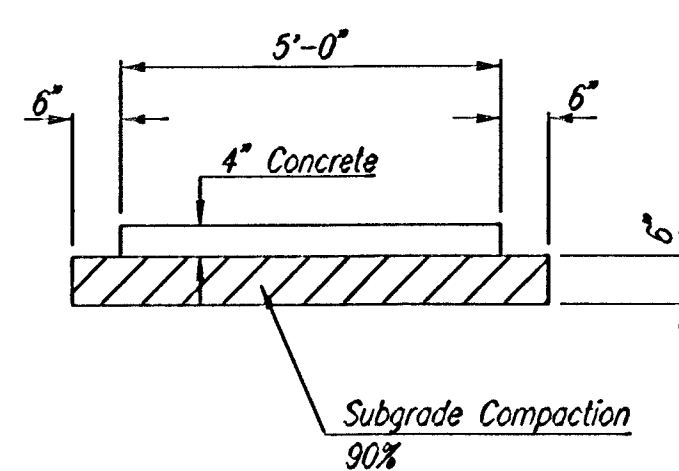
① MONOLITHIC EDGE CURB SHALL BE SUBSIDIARY TO "6" DRIVEWAY CONCRETE PAVEMENT".



PLAN



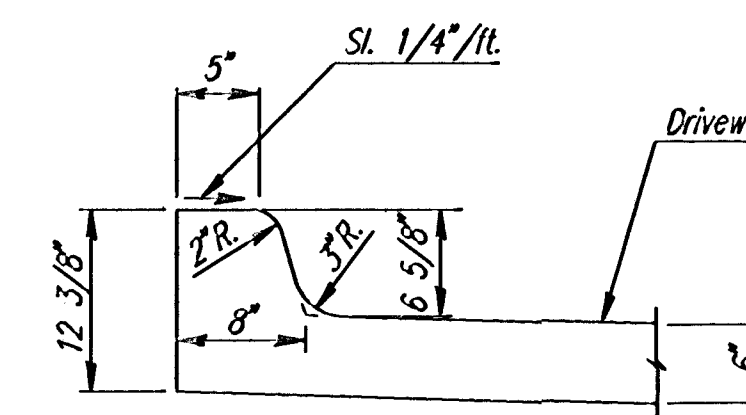
CONSTRUCTION JOINT



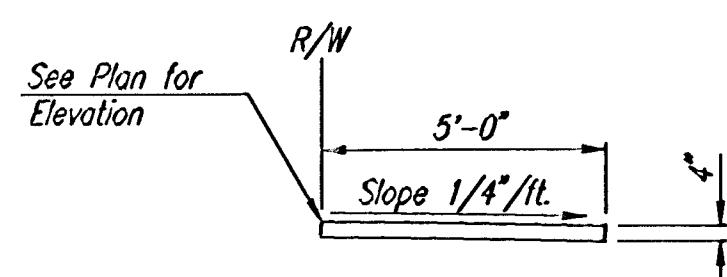
TYPICAL SIDEWALK SECTION

SIDEWALK NOTES

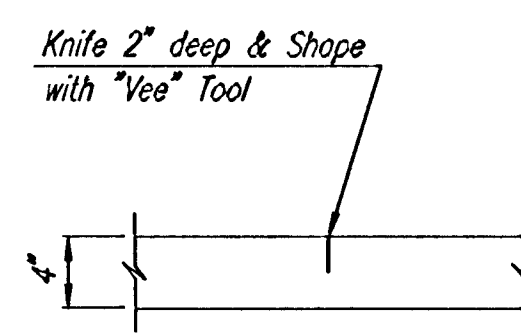
1. THE SIDEWALK ALIGNMENT AS SHOWN IS APPROX. ONLY. THE FINAL ALIGNMENT SHALL BE APPROVED BY THE OWNER.
2. THE CONTRACTOR SHALL NOT START SIDEWALK CONSTRUCTION UNTIL THE OWNER HAS COMPLETED ALL OF THE PROPOSED EARTH BERMS, MOUNDS, ETC.
3. THE CONTRACTOR SHALL COMPACT 6" SUBGRADE UNDER ALL SIDEWALKS AS DETAILED ON THIS SHEET. ALL SIDEWALK COMPACTION SHALL BE CONSIDERED SUBSIDIARY TO "4" SIDEWALK CONCRETE PAVEMENT".



DETAIL C
(6 5/8")



SECTION B-B



CONTRACTION JOINT

4" WALK DETAILS

RECORD DRAWING

REMINGTON PLACE - PHASE 2

MISCELLANEOUS PAVING DETAILS



Professional Engineering Consultants, P.A.
303 S. TOPEKA - WICHITA, KANSAS 67202
316-262-2691 • FAX 316-262-3003

Designed by BER	Checked by
Drawn by DEP	Date DEC., 2002 Job No. 02398