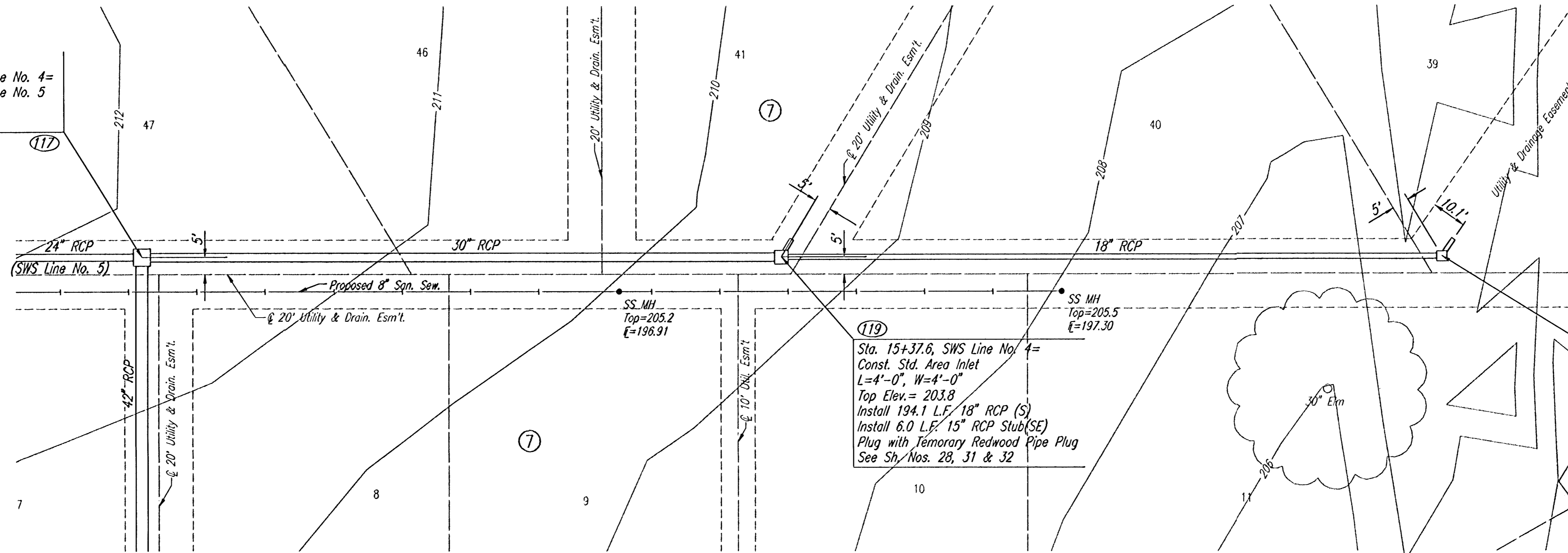


COORDINATE LIST		
POINT	NORTH	EAST
117	385,434.1721	2,370,909.8188
119	385,246.5164	2,370,911.8809
121	385,052.3687	2,370,914.0143

(121) = COORDINATE POINT NO.

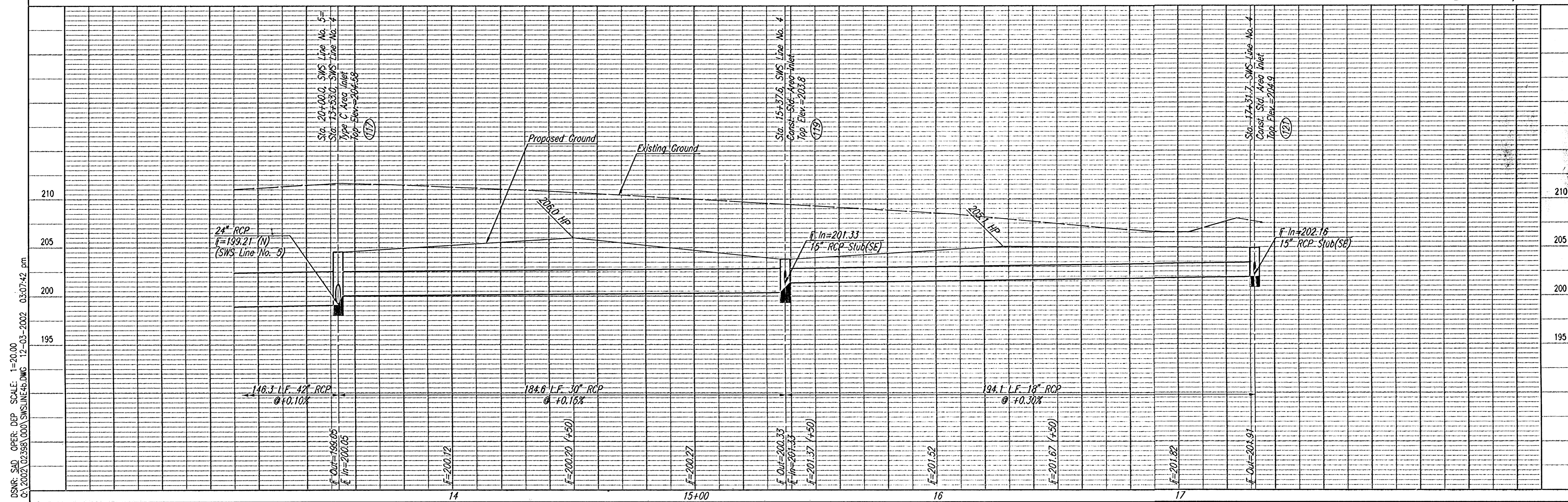
Sta. 13+53.0, SWS Line No. 4=  
Sta. 20+00.0, SWS Line No. 5  
Type C Area Inlet  
Top Elev. = 204.58



(119)  
Sta. 15+37.6, SWS Line No. 4=  
Const. Std. Area Inlet  
L=4'-0", W=4'-0"  
Top Elev. = 203.8  
Install 194.1 L.F. 18" RCP (S)  
Install 6.0 L.F. 15" RCP Stub(SE)  
Plug with Temporary Redwood Pipe Plug  
See Sh. Nos. 28, 31 & 32

(121)  
Sta. 17+31.7, SWS Line No. 4=  
Const. Std. Area Inlet  
L=3'-0", W=3'-0"  
Top Elev. = 204.9  
Install 6.0 L.F. 15" RCP Stub(SE)  
Plug with Temporary Redwood Pipe Plug  
See Sh. Nos. 28, 31 & 32

**RECORD DRAWING**  
24-Nov-03



REVISION PLACE - PHASE 2  
**SWS LINE NO. 4**  
STA. 13+53.0 TO STA. 17+31.7