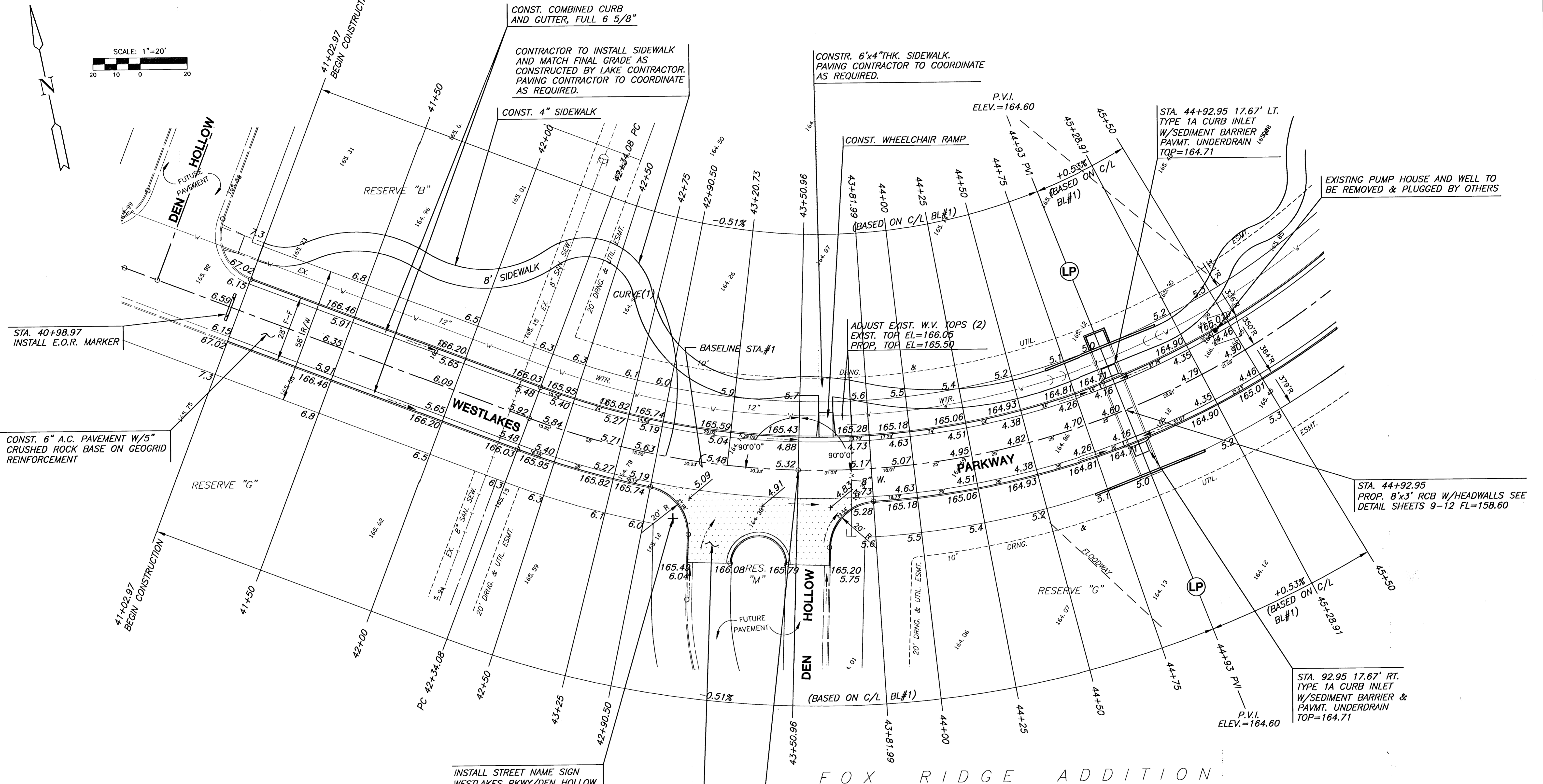
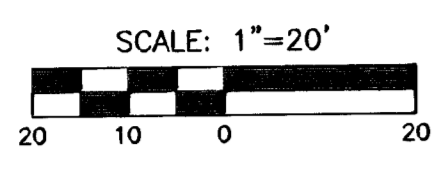


FOX RIDGE ADDITION



STA. 40+98.97  
INSTALL E.O.R. MARKER

CONST. 6" A.C. PAVEMENT W/5" CRUSHED ROCK BASE ON GEOGRID REINFORCEMENT

CONST. COMBINED CURB AND GUTTER, FULL 6 5/8"

CONTRACTOR TO INSTALL SIDEWALK AND MATCH FINAL GRADE AS CONSTRUCTED BY LAKE CONTRACTOR. PAVING CONTRACTOR TO COORDINATE AS REQUIRED.

CONSTR. 6"x4" THK. SIDEWALK. PAVING CONTRACTOR TO COORDINATE AS REQUIRED.

STA. 44+92.95 17.67' LT. TYPE 1A CURB INLET W/SEDIMENT BARRIER PAVMT. UNDERDRAIN TOP=164.71

EXISTING PUMP HOUSE AND WELL TO BE REMOVED & PLUGGED BY OTHERS

ADJUST EXIST. W.V. TOPS (2)  
EXIST. TOP EL=166.05  
PROP. TOP EL=165.50

STA. 44+92.95  
PROP. 8'x3' RCB W/HEADWALLS SEE DETAIL SHEETS 9-12 FL=158.60

STA. 92.95 17.67' RT. TYPE 1A CURB INLET W/SEDIMENT BARRIER & PAVMT. UNDERDRAIN TOP=164.71

INSTALL STREET NAME SIGN WESTLAKES PKWY/DEN HOLLOW STA. 43+01.64 OFFSET 25.44 RT.

CONST. 7" REINF. CONC. VALLEY GUTTER W/5" CRUSHED ROCK BASE ON GEOGRID REINFORCEMENT

STA. 43+50.96, BL #1=  
STA. 18+57.08, DEN HOLLOW

FOX RIDGE ADDITION



<b>FOX RIDGE ADDITION</b>		
PROJECT NAME		
<b>WESTLAKES PARKWAY - ENTRY PHASE 3</b>		
SHEET TITLE		
DK	DM	DK
DESIGN BY:	DRAWN BY:	CHECKED BY:
JULY 2003	99118E1	7 / 26
DATE	JOB NO.	SHEET/OF