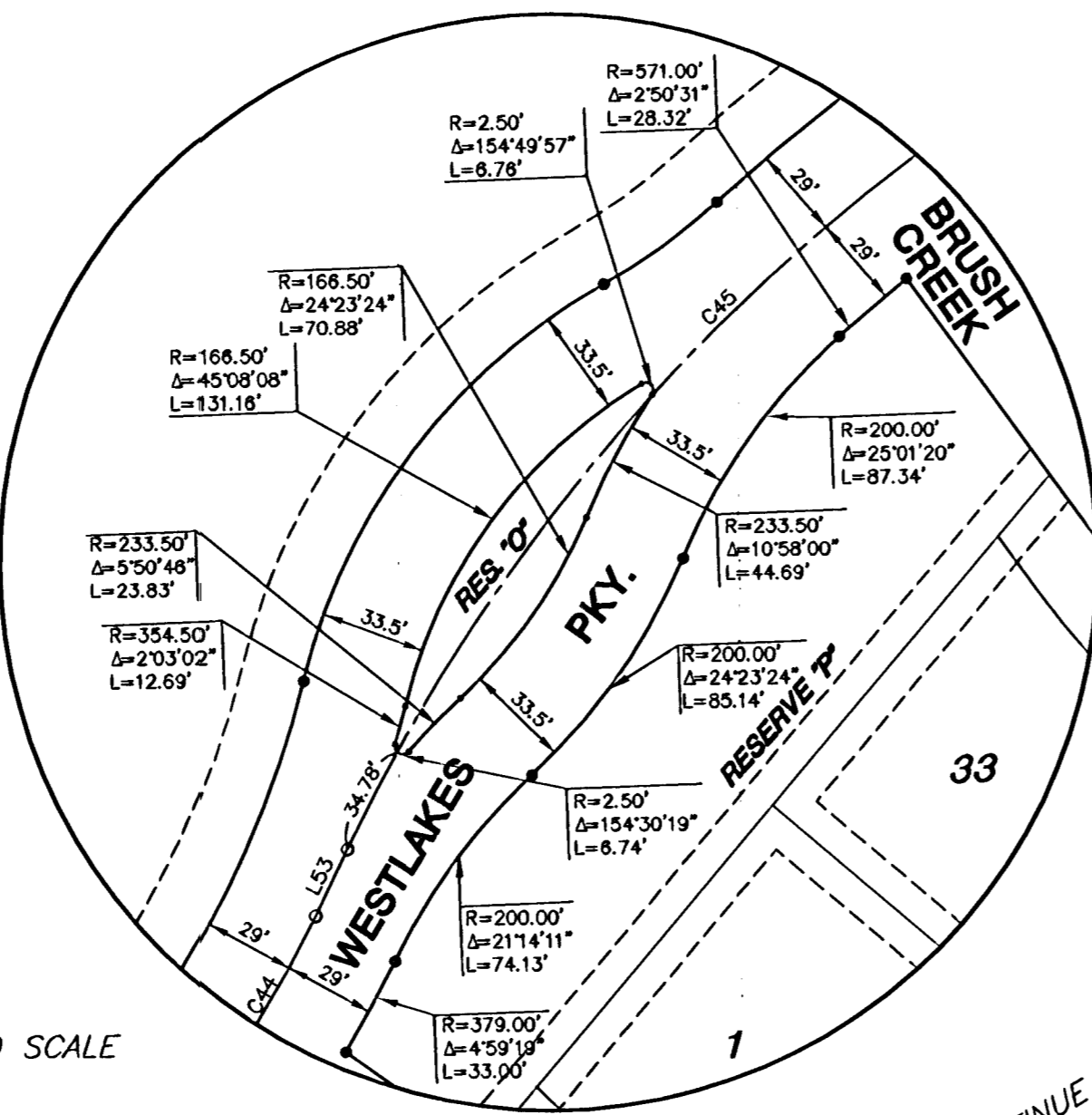
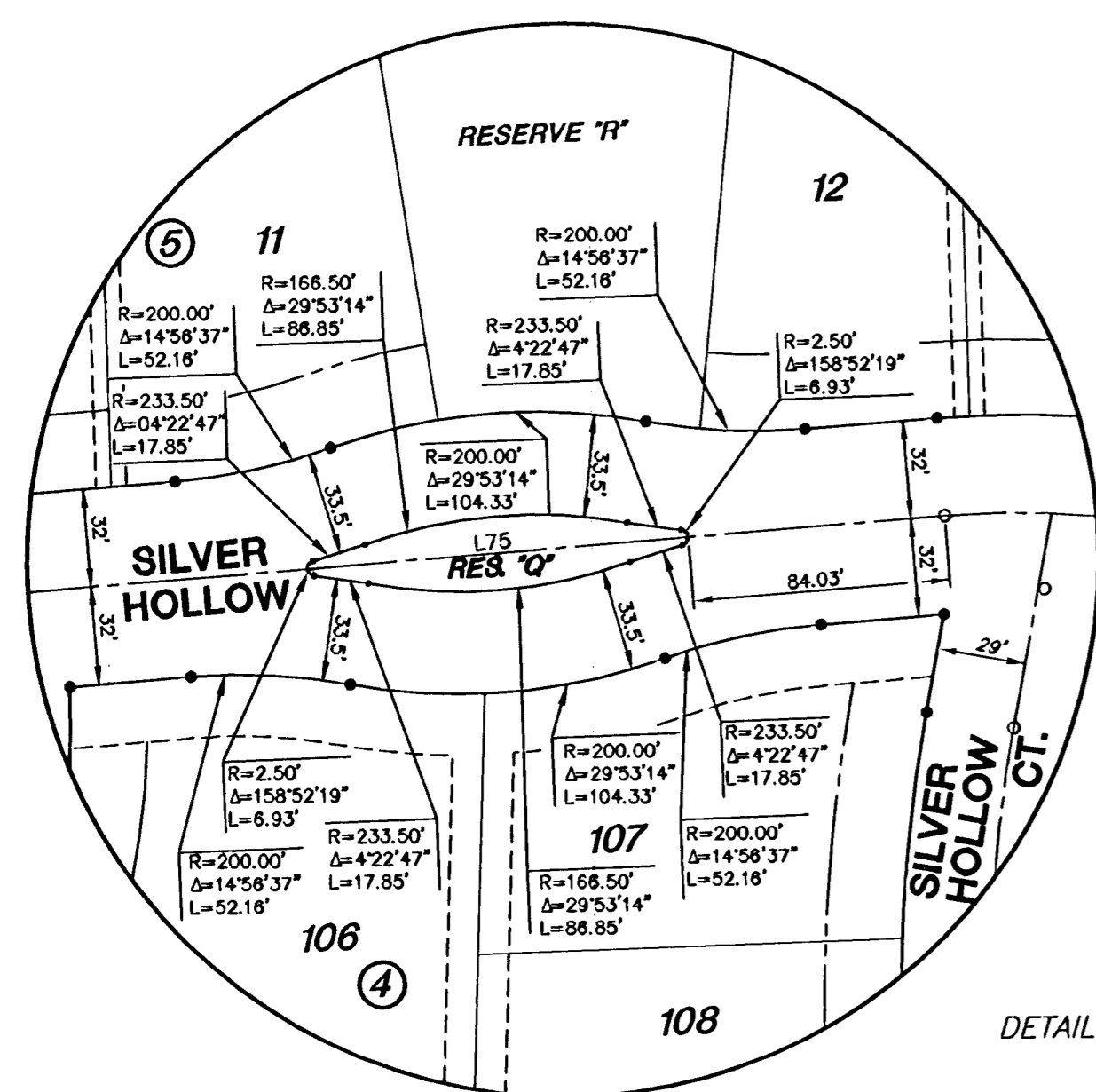


# FINAL PLAT

## FOX RIDGE ADDITION

### AN ADDITION TO WICHITA, SEDGWICK COUNTY, KANSAS



RESERVE "Q"

DETAIL NOT TO SCALE

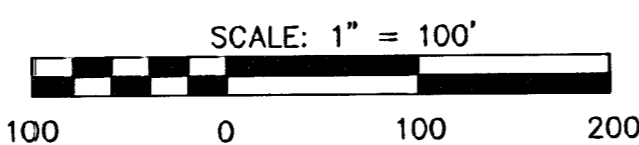
RESERVE "O"

RESERVE "Q"

FLOODWAY RESERVE

#### LEGEND

- △ = Found Section Corner
- = Found Survey Monument
- = Set 5/8" Rebar W/ MKEC CLS 39 id. cap
- D.E. = Drainage Easement
- B.S. = Building Setback
- U.E. = Utility Easement
- (M) = Measured
- = Floodway Reserve



#### NOTES

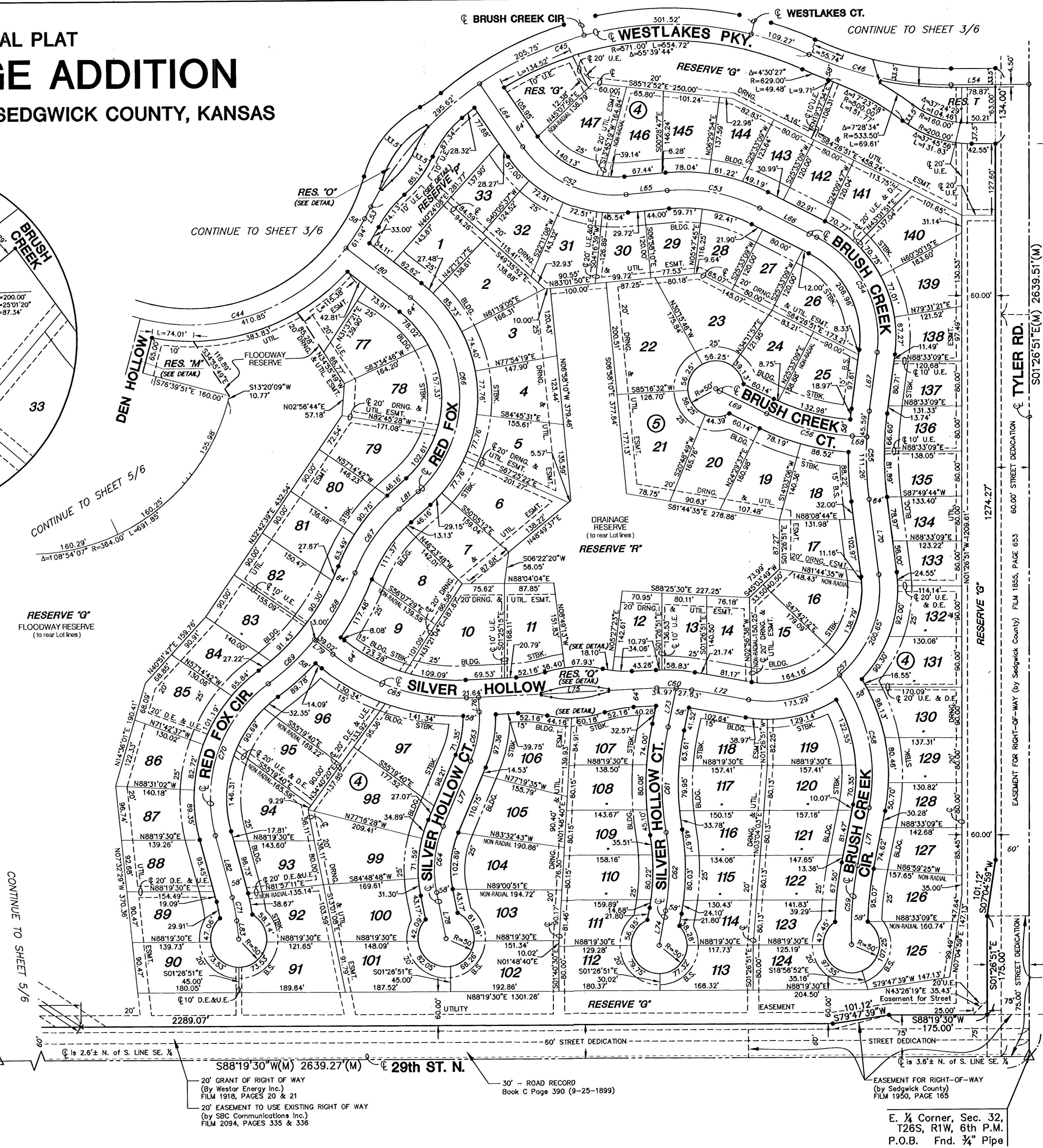
- There shall be no parking on or along Westlakes Parkway.

MINIMUM PAD ELEVATIONS (LOWEST OPENINGS)			
LOT	BLOCK	ELEVATION (CITY DATUM)	ELEVATION (NGVD)
77	4	164.9	1352.3
78	4	164.9	1352.3
79	4	164.9	1352.3
80	4	164.9	1352.3
81	4	164.9	1352.3
82	4	164.9	1352.3
83	4	164.9	1352.3
84	4	164.9	1352.3
85	4	164.9	1352.3
86	4	164.9	1352.3
87	4	164.9	1352.3
88	4	164.9	1352.3
89	4	164.9	1352.3
90	4	164.9	1352.3
2	5	167.9	1355.3
3	5	167.9	1355.3
4	5	167.9	1355.3
5	5	167.9	1355.3
6	5	167.9	1355.3
7	5	167.9	1355.3
8	5	167.9	1355.3
9	5	167.9	1355.3
10	5	167.9	1355.3
11	5	167.9	1355.3
12	5	167.9	1355.3
13	5	167.9	1355.3
14	5	167.9	1355.3
15	5	167.9	1355.3
16	5	167.9	1355.3
17	5	167.9	1355.3
18	5	167.9	1355.3
19	5	167.9	1355.3
20	5	167.9	1355.3
21	5	167.9	1355.3
22	5	167.9	1355.3
30	5	167.9	1355.3
31	5	167.9	1355.3

CURVE TABLE			
CURVE	LENGTH	RADIUS	DELTA
C44	589.66'	350.00'	Δ=96°31'44"
C45	912.16'	600.00'	Δ=87°06'18"
C46	260.56'	600.00'	Δ=24°52'54"
C52	213.42'	200.00'	Δ=61°08'22"
C53	170.28'	300.00'	Δ=32°31'19"
C54	246.38'	200.00'	Δ=70°34'56"
C55	158.85'	600.00'	Δ=14°58'42"
C56	158.56'	400.00'	Δ=22°42'48"
C57	373.94'	200.00'	Δ=107°07'33"
C58	248.70'	300.00'	Δ=47°29'52"
C59	141.69'	600.00'	Δ=13°31'38"
C60	62.60'	285.00'	Δ=12°35'03"
C61	188.26'	500.00'	Δ=21°34'21"
C62	140.60'	400.00'	Δ=20°08'23"
C63	89.91'	200.00'	Δ=23°45'28"
C64	120.34'	200.00'	Δ=34°28'27"
C65	255.75'	350.00'	Δ=41°52'01"
C66	394.00'	225.00'	Δ=100°19'58"
C67	139.37'	300.00'	Δ=28°37'04"
C68	139.37'	450.00'	Δ=17°48'18"
C69	114.38'	447.00'	Δ=14°39'42"
C70	304.23'	253.00'	Δ=68°53'52"
C71	42.33'	275.00'	Δ=8°49'06"

LINE TABLE		
LINE	LENGTH	BEARING
L53	23.81'	N25°56'24"E
L54	138.83'	S88°09'47"W
L64	135.85'	S35°49'48"E
L65	73.72'	N83°01'50"E
L66	113.90'	S84°28'51"E
L67	105.94'	S09°08'04"W
L68	25.98'	S88°13'08"E
L69	100.87'	S65°30'23"E
L70	134.97'	N08°50'38"W
L71	104.90'	S09°45'06"W
L72	102.90'	S81°43'05"E
L73	70.70'	N10°28'03"E
L74	62.53'	N09°02'09"E
L75	339.88'	N85°41'51"E
L76	28.41'	N04°18'09"W
L77	125.29'	N21°27'20"E
L78	83.90'	N13°01'08"W
L79	42.02'	N52°26'08"W
L80	144.37'	S53°55'16"E
L81	46.16'	S46°24'40"W
L82	114.54'	N16°40'18"W
L83	32.69'	N07°51'12"W

S. 1/4 Corner, Sec. 32, T26S, R1W, 6th P.M. Fnd. 3/4" Bar w/ 1 1/2" Alum. Cap stamped Sedgwick County



S88°19'30"W(M) 2639.27'(M) 29th ST. N.

30' - ROAD RECORD Book C Page 390 (9-25-1899)

20' GRANT OF RIGHT OF WAY (By Westar Energy Inc.) FILM 1918, PAGES 20 & 21  
20' EASEMENT TO USE EXISTING RIGHT OF WAY (By SBC Communications Inc.) FILM 2094, PAGES 335 & 336

EASEMENT FOR RIGHT-OF-WAY (By Sedgwick County) FILM 1885, PAGE 653  
EASEMENT FOR RIGHT-OF-WAY (By City of Wichita) FILM 1692, PAGE 316

E. 1/4 Corner, Sec. 32, T26S, R1W, 6th P.M. P.O.B. Fnd. 3/4" Pipe