

FINAL PLAT
FOX RIDGE ADDITION
 AN ADDITION TO WICHITA, SEDGWICK COUNTY, KANSAS

MINIMUM PAD ELEVATIONS (LOWEST OPENINGS)

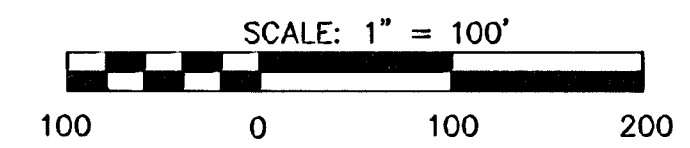
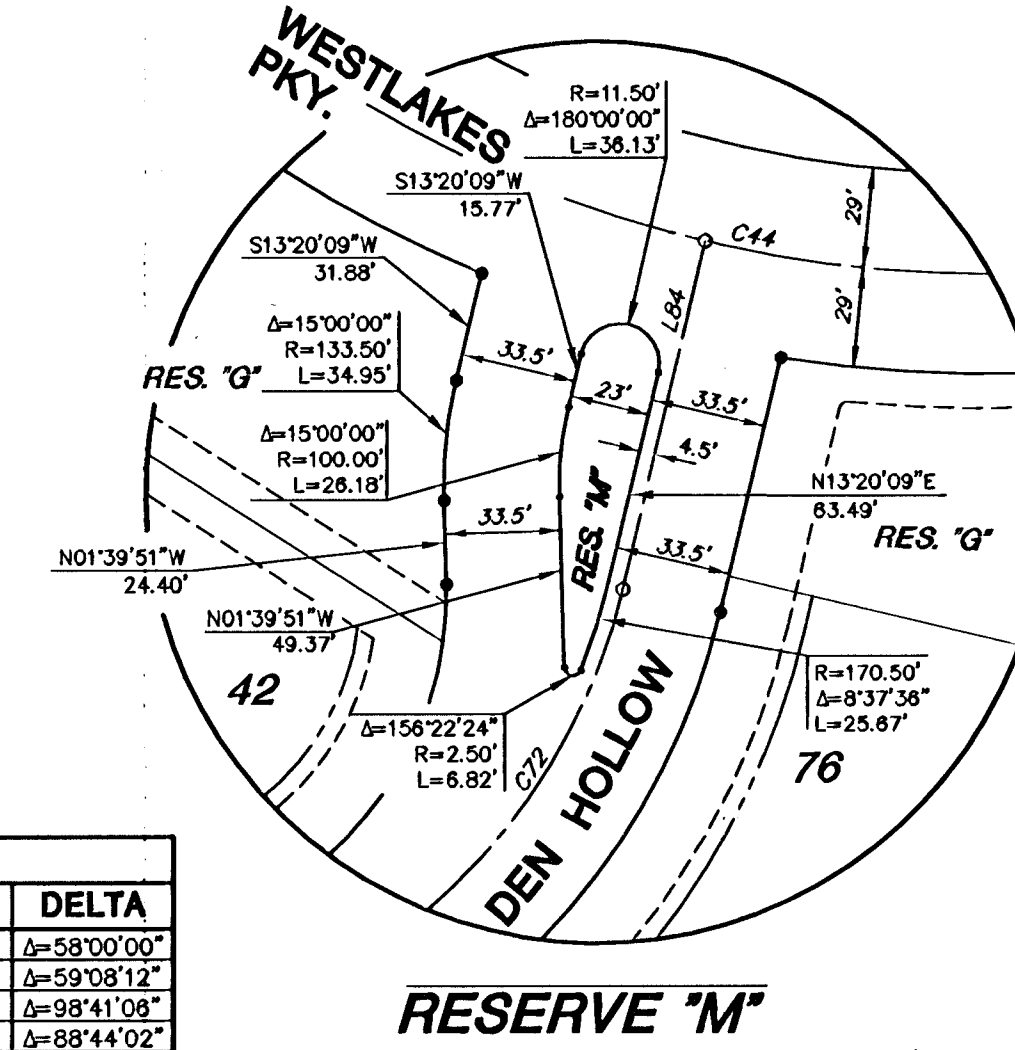
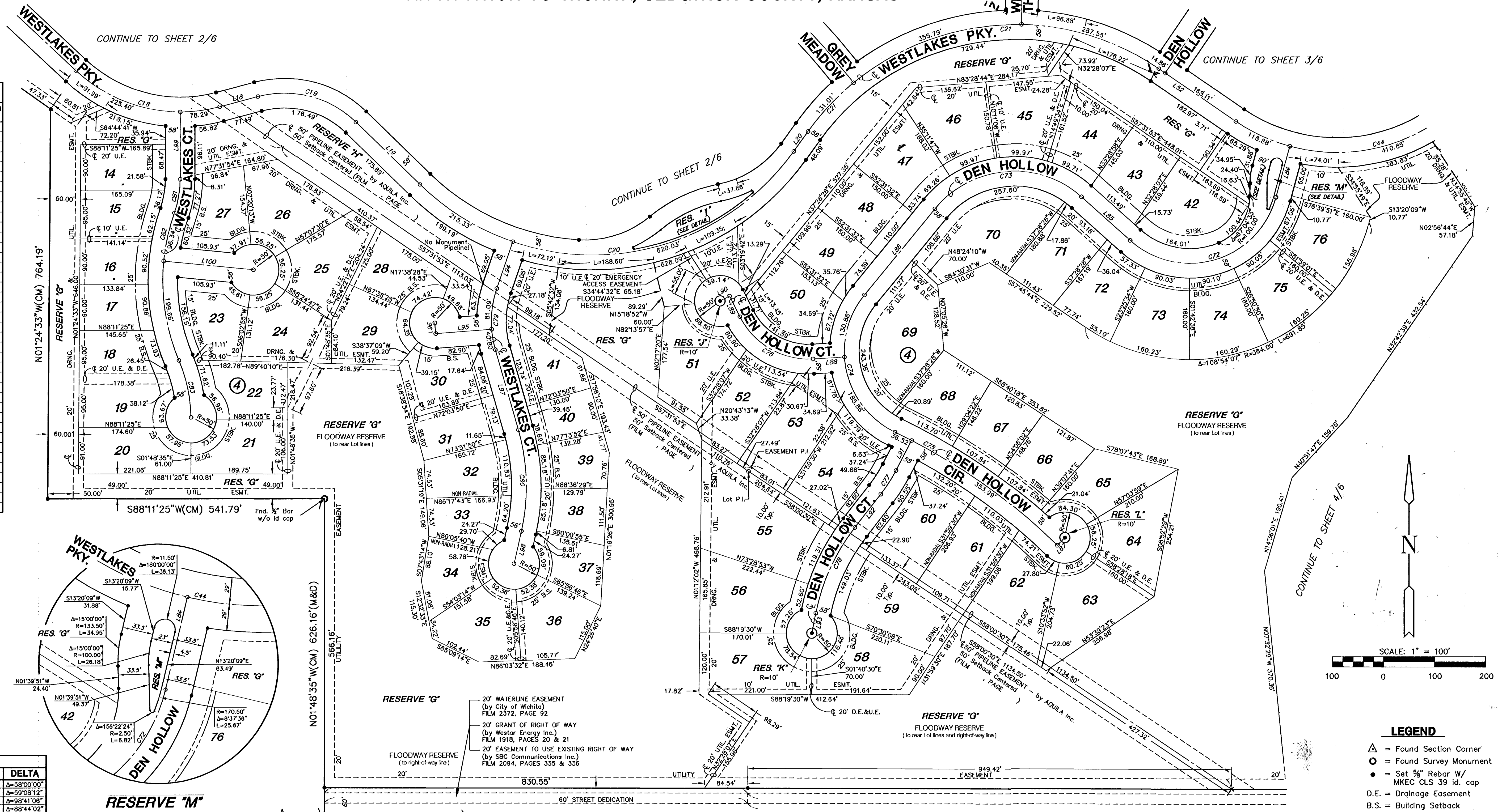
LOT	BLOCK	ELEVATION (CITY DATUM)	ELEVATION (NGVD)
21	4	164.9	1352.3
22	4	164.9	1352.3
24	4	164.9	1352.3
29	4	164.9	1352.3
30	4	164.9	1352.3
31	4	164.9	1352.3
32	4	164.9	1352.3
33	4	164.9	1352.3
34	4	164.9	1352.3
35	4	164.9	1352.3
36	4	164.9	1352.3
37	4	164.9	1352.3
38	4	164.9	1352.3
39	4	164.9	1352.3
40	4	164.9	1352.3
41	4	164.9	1352.3
51	4	164.9	1352.3
52	4	164.9	1352.3
55	4	164.9	1352.3
56	4	164.9	1352.3
57	4	164.9	1352.3
58	4	164.9	1352.3
59	4	164.9	1352.3
61	4	164.9	1352.3
62	4	164.9	1352.3
63	4	164.9	1352.3
64	4	164.9	1352.3
65	4	164.9	1352.3
66	4	164.9	1352.3
67	4	164.9	1352.3
68	4	164.9	1352.3
69	4	164.9	1352.3
70	4	164.9	1352.3
71	4	164.9	1352.3
72	4	164.9	1352.3
73	4	164.9	1352.3
74	4	164.9	1352.3
75	4	164.9	1352.3
76	4	164.9	1352.3

LINE TABLE

LINE	LENGTH	BEARING
L18	77.49'	N73°17'00"E
L19	175.69'	S47°34'48"W
L20	48.09'	S33°44'08"W
L52	182.97'	S57°31'53"E
L84	103.66'	S13°20'09"W
L85	129.22'	N50°13'35"W
L86	218.13'	S37°28'28"W
L87	21.00'	S42°25'03"W
L88	81.62'	N84°17'23"E
L89	45.00'	S28°19'48"E
L90	21.00'	N61°40'15"E
L91	66.60'	N25°30'57"E
L92	82.60'	N36°03'40"E
L93	39.99'	N09°23'39"E
L94	97.23'	S16°58'58"W
L95	110.04'	S83°45'09"W
L96	21.00'	N06°18'55"W
L97	163.19'	S17°56'10"E
L98	65.00'	S10°53'38"W
L99	132.14'	S01°45'55"E
L100	176.79'	N86°13'56"W

CURVE TABLE

CURVE	LENGTH	RADIUS	DELTA
C18	303.69'	300.00'	Δ=58°00'00"
C19	206.43'	200.00'	Δ=59°08'12"
C20	835.35'	485.00'	Δ=98°41'08"
C21	774.35'	500.00'	Δ=88°44'02"
C44	589.66'	350.00'	Δ=96°31'44"
C72	355.84'	175.00'	Δ=118°28'18"
C73	322.19'	200.00'	Δ=92°17'57"
C74	316.74'	175.00'	Δ=103°42'08"
C75	390.51'	1200.00'	Δ=18°38'44"
C76	175.53'	150.00'	Δ=87°02'51"
C77	55.22'	300.00'	Δ=10°32'43"
C78	186.17'	400.00'	Δ=26°40'01"
C79	121.89'	200.00'	Δ=34°55'08"
C80	201.27'	400.00'	Δ=28°49'47"
C81	87.48'	200.00'	Δ=19°19'57"
C82	298.00'	400.00'	Δ=42°23'58"
C83	114.37'	300.00'	Δ=21°50'33"



- LEGEND**
- △ = Found Section Corner
 - = Found Survey Monument
 - = Set 3/8" Rebar w/ MKEC CLS 39 id. cap
 - D.E. = Drainage Easement
 - B.S. = Building Setback
 - U.E. = Utility Easement
 - (CM) = Calculated from Measured
 - (M) = Measured
 - (D) = Deeded
 - = Floodway Reserve

SW. Corner, Sec. 32, T26S, R1W, 6th P.M. Fnd. 3/4" Bar w/ yellow id cap (lettering warn off)

S. 1/4 Corner, Sec. 32, T26S, R1W, 6th P.M. Fnd. 3/4" Bar w/ 1/2" Alum. Cap stamped Sedgwick County

NOTE
 There shall be no parking on or along Westlakes Parkway.