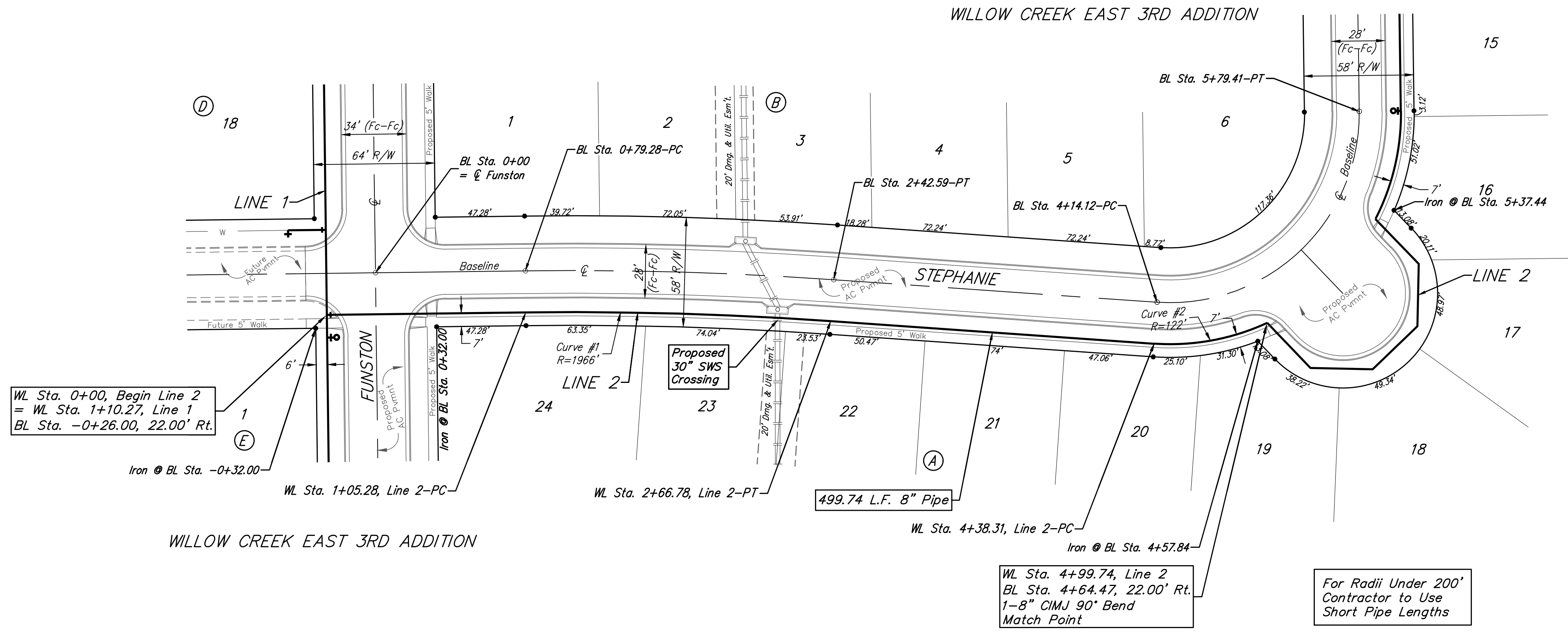
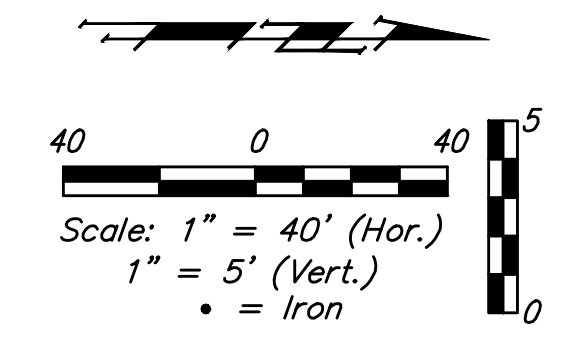


**BENCHMARKS:**  
 Brass benchmark disc in top of curb, east of wheelchair ramp NE cor. of Funston and Lynnrae Elev. = 1343.69 NAVD88  
 Brass benchmark disc in top of curb, north of wheelchair ramp NW cor. of Funston and Herrington Elev. = 1344.71 NAVD88

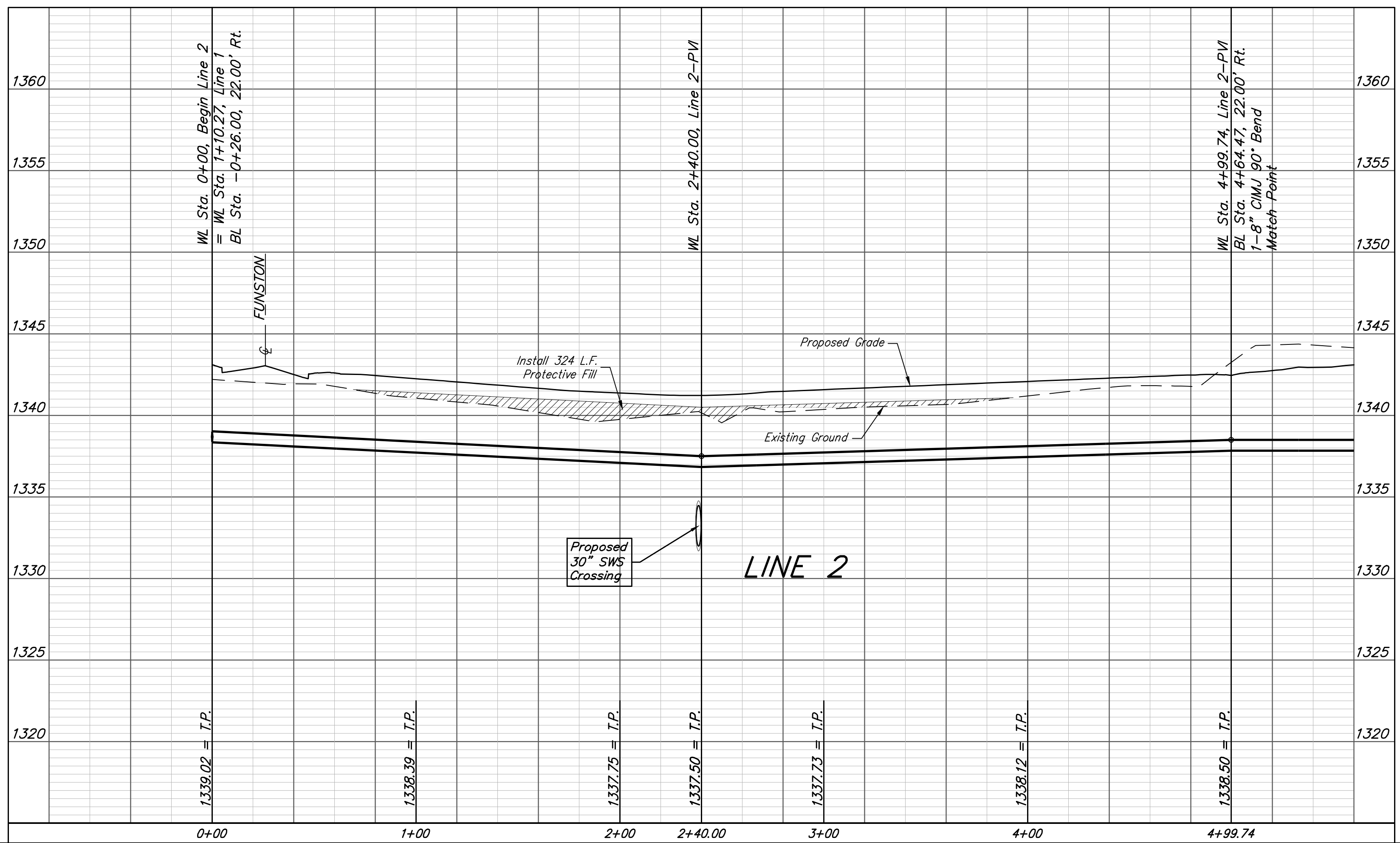


Curve #1  
 Curve Data Based on Centerline of Pipe  
 Rad. = 1966' Delta = 4°42'24" Tangent = 80.80'  
 Arc = 161.50' L.C. = 161.46' Def./Ft. = 0.87430 Min.

Station	Arc	Chord 8' Right	Defl.	Total Defl.
1+05.28	-	-	0'00'00"	0'00'00"
1+25.00	19.72'	19.64'	0'17'14"	0'17'14"
1+50.00	25.00'	24.90'	0'21'52"	0'39'06"
1+75.00	25.00'	24.90'	0'21'51"	1'00'57"
2+00.00	25.00'	24.90'	0'21'52"	1'22'49"
2+25.00	25.00'	24.90'	0'21'51"	1'44'40"
2+50.00	25.00'	24.90'	0'21'52"	2'06'32"
2+66.78	16.78'	16.71'	0'14'40"	2'21'12"

Curve #2  
 Curve Data Based on Centerline of Pipe  
 Rad. = 122' Delta = 28°51'18" Tangent = 31.39'  
 Arc = 61.43' L.C. = 60.79' Def./Ft. = 14.09165 Min.

Station	Arc	Chord 8' Right	Defl.	Total Defl.
4+38.31	-	-	0'00'00"	0'00'00"
4+50.00	11.69'	12.45'	2'44'44"	2'44'44"
4+75.00	25.00'	26.60'	5'52'17"	8'37'01"
4+99.74	24.74'	26.32'	5'48'38"	14'25'39"



Willow Creek East 3rd Addition - Phase I

**LINE 2**  
Water Distribution System

Baughman Company, P.A. 315 Ellis St. Wichita, KS 67211 P 316-262-7271 F 316-262-0149  
ENGINEERING | SURVEYING | PLANNING | LANDSCAPE ARCHITECTURE

PROJECT NUMBER <b>448-90408</b>	DESIGN NBW	DRAWN JAK
REVISIONS:	APPROVED	DATE 3/08/19
	SCALE Noted	SHEET <b>5 OF 15</b>

E:\Projects\Willow Creek East 3rd Addition\_1704\F283\Engineering\Phase I\WTR\_18-11-E120\WTR PLANS