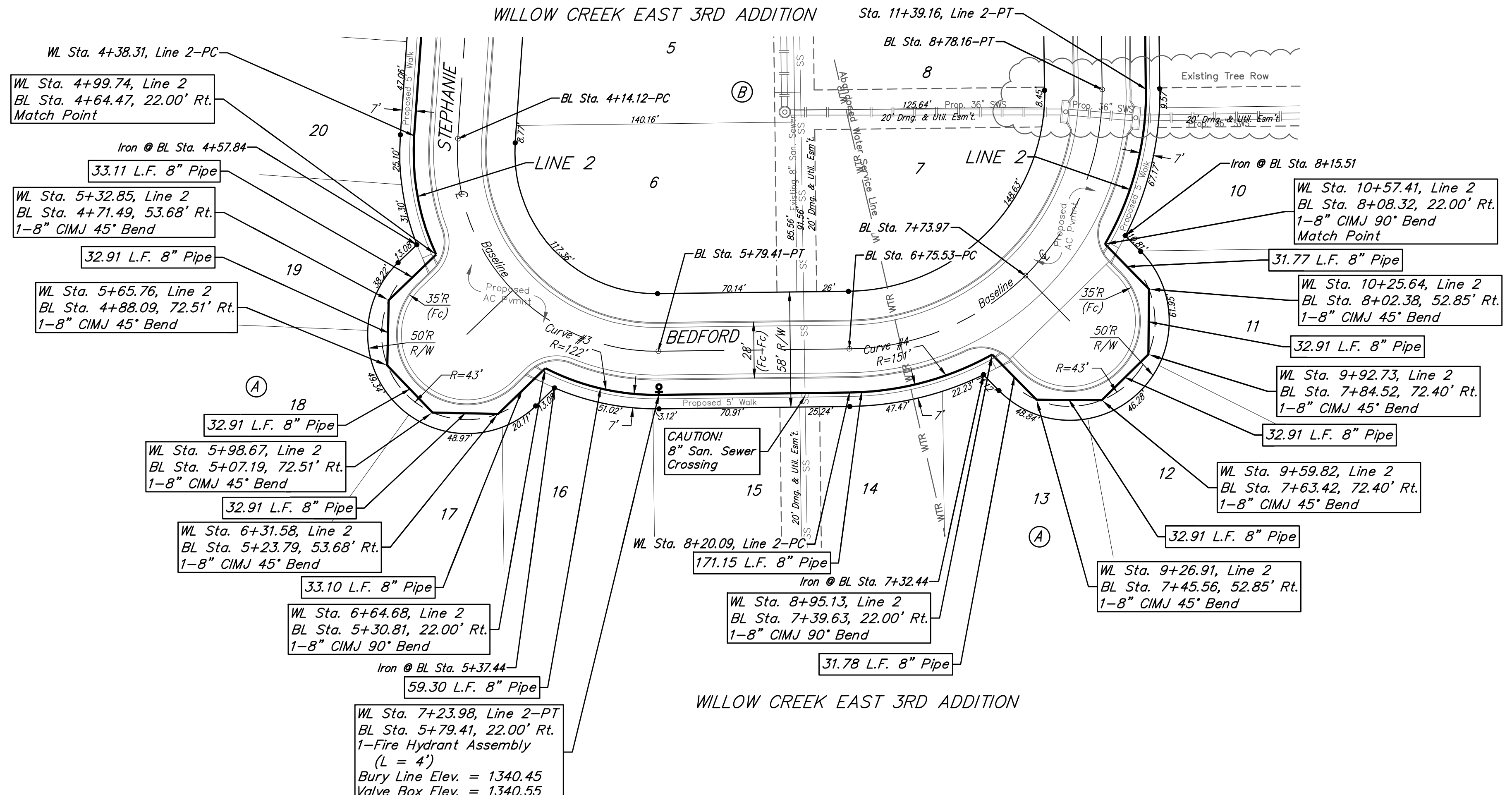
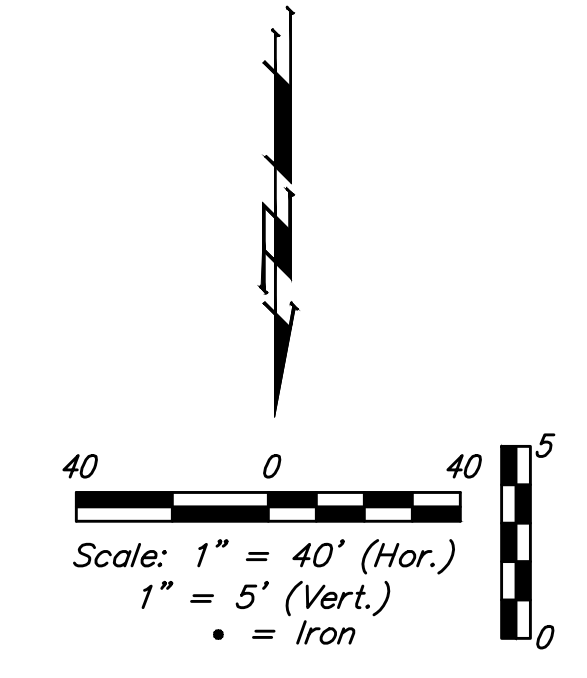


BENCHMARKS:
 Brass benchmark disc in top of curb, east of wheelchair ramp NE cor. of Funston and Lynnrae Elev. = 1343.69 NAVD88
 Brass benchmark disc in top of curb, north of wheelchair ramp NW cor. of Funston and Herrington Elev. = 1344.71 NAVD88



For Radii Under 200'
 Contractor to Use
 Short Pipe Lengths

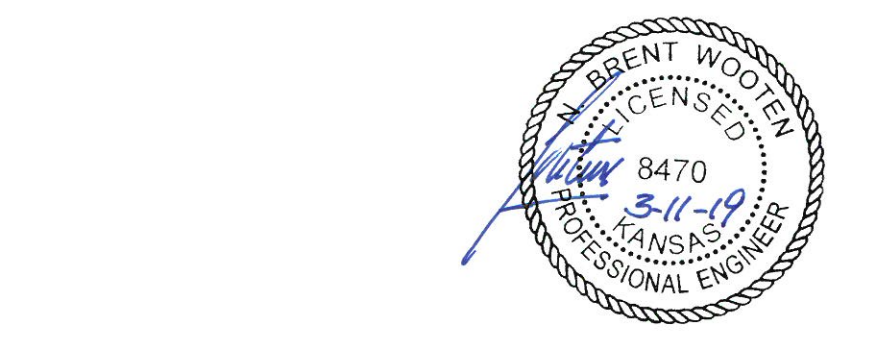
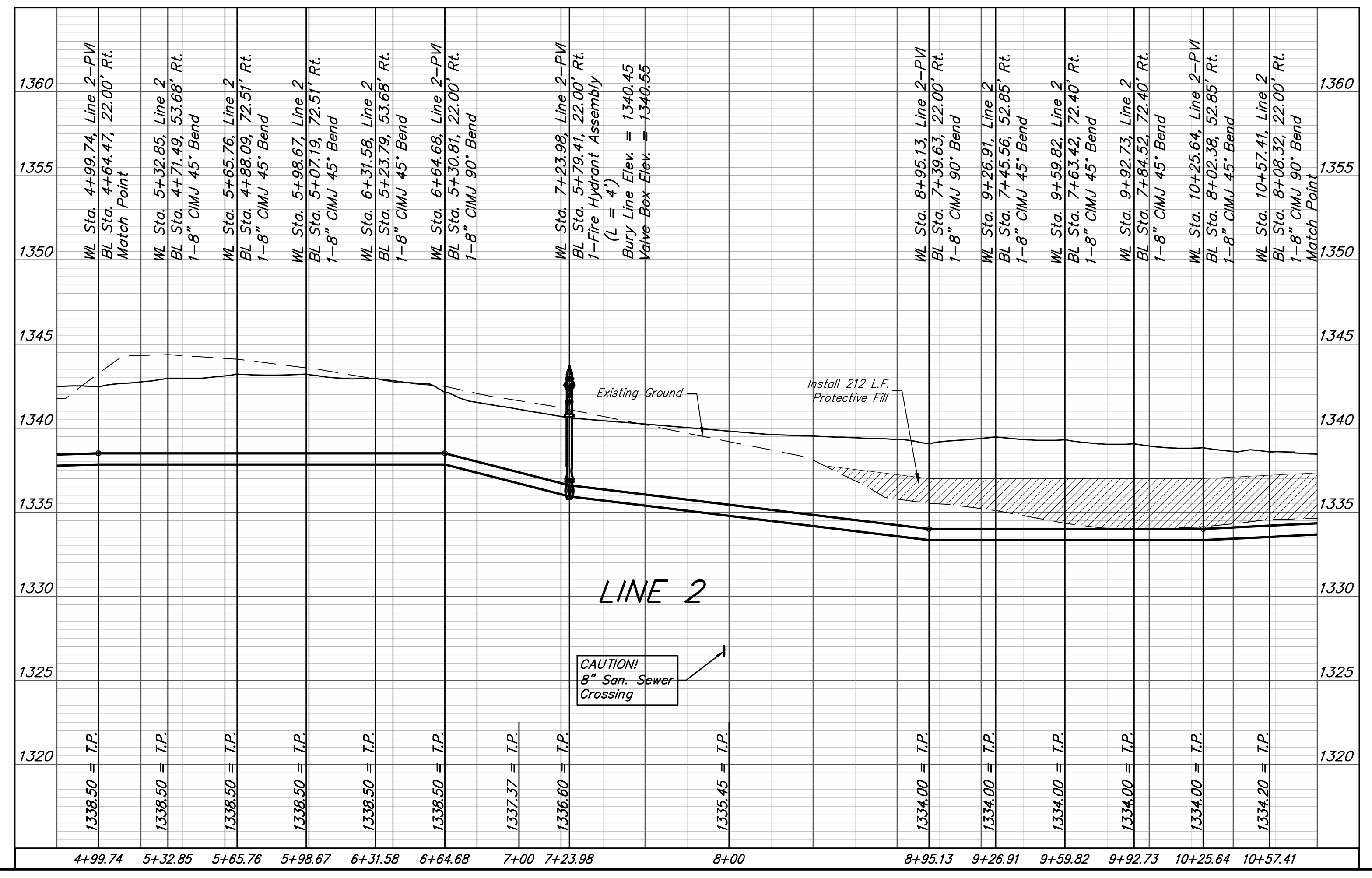


Curve #3
 Curve Data Based on Centerline of Pipe
 Rad. = 122' Delta = 27°50'50" Tangent = 30.25'
 Arc = 59.30' L.C. = 58.71' Def./Ft. = 14.08797 Min.

Station	Arc	Chord 8' Right	Defl.	Total Defl.
6+64.68	-	-	0'00"00"	0'00"00"
6+75.00	10.32'	10.99'	2'25"23"	2'25"23"
7+00.00	25.00'	26.59'	5'52"12"	8'17"35"
7+23.98	23.98'	25.51'	5'37"50"	13'55"25"

Curve #4
 Curve Data Based on Centerline of Pipe
 Rad. = 151' Delta = 27°50'50" Tangent = 37.43'
 Arc = 75.04' L.C. = 72.67' Def./Ft. = 11.13295 Min.

Station	Arc	Chord 8' Right	Defl.	Total Defl.
8+20.09	-	-	0'00"00"	0'00"00"
8+25.00	4.91'	5.06'	0'54"40"	0'54"40"
8+50.00	25.00'	25.72'	4'38"19"	5'32"59"
8+75.00	25.00'	25.72'	4'38"20"	10'11"19"
8+95.13	20.13'	20.72'	3'44"06"	13'55"25"



Baughman Willow Creek East 3rd Addition - Phase I
LINE 2
 Water Distribution System

Baughman Company, P.A. 315 Ellis St. Wichita, KS 67211 P 316-262-7271 F 316-262-0149
 ENGINEERING | SURVEYING | PLANNING | LANDSCAPE ARCHITECTURE

PROJECT NUMBER 448-90408	DESIGN NBW	DRAWN JAK
REVISIONS:	APPROVED	DATE 3/08/19
	SCALE Noted	
	SHEET	

6 OF 15

E:\Projects\Willow Creek East 3rd Addition_1704\F283\Engineering\Phase I\WTR_18-11-19\WTR PLANS