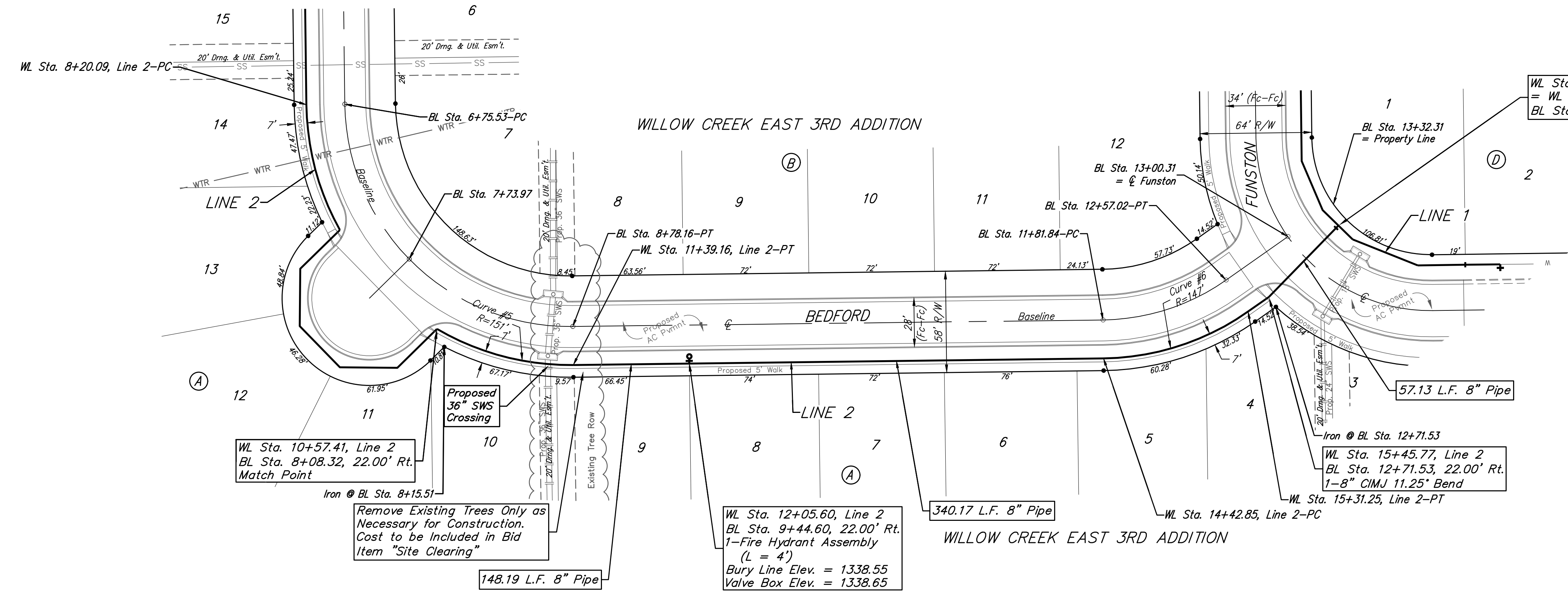
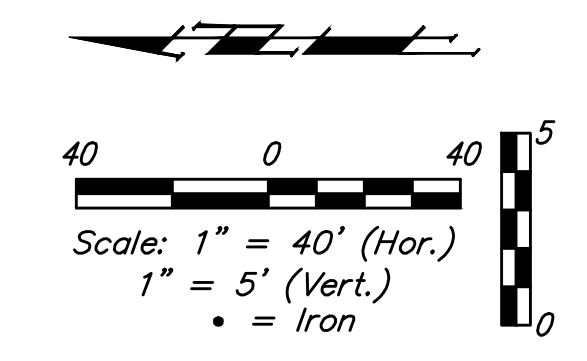


**BENCHMARKS:**  
 Brass benchmark disc in top of curb, east of wheelchair ramp NE cor. of Funston and Lynnrae Elev. = 1343.69 NAVD88  
 Brass benchmark disc in top of curb, north of wheelchair ramp NW cor. of Funston and Herrington Elev. = 1344.71 NAVD88



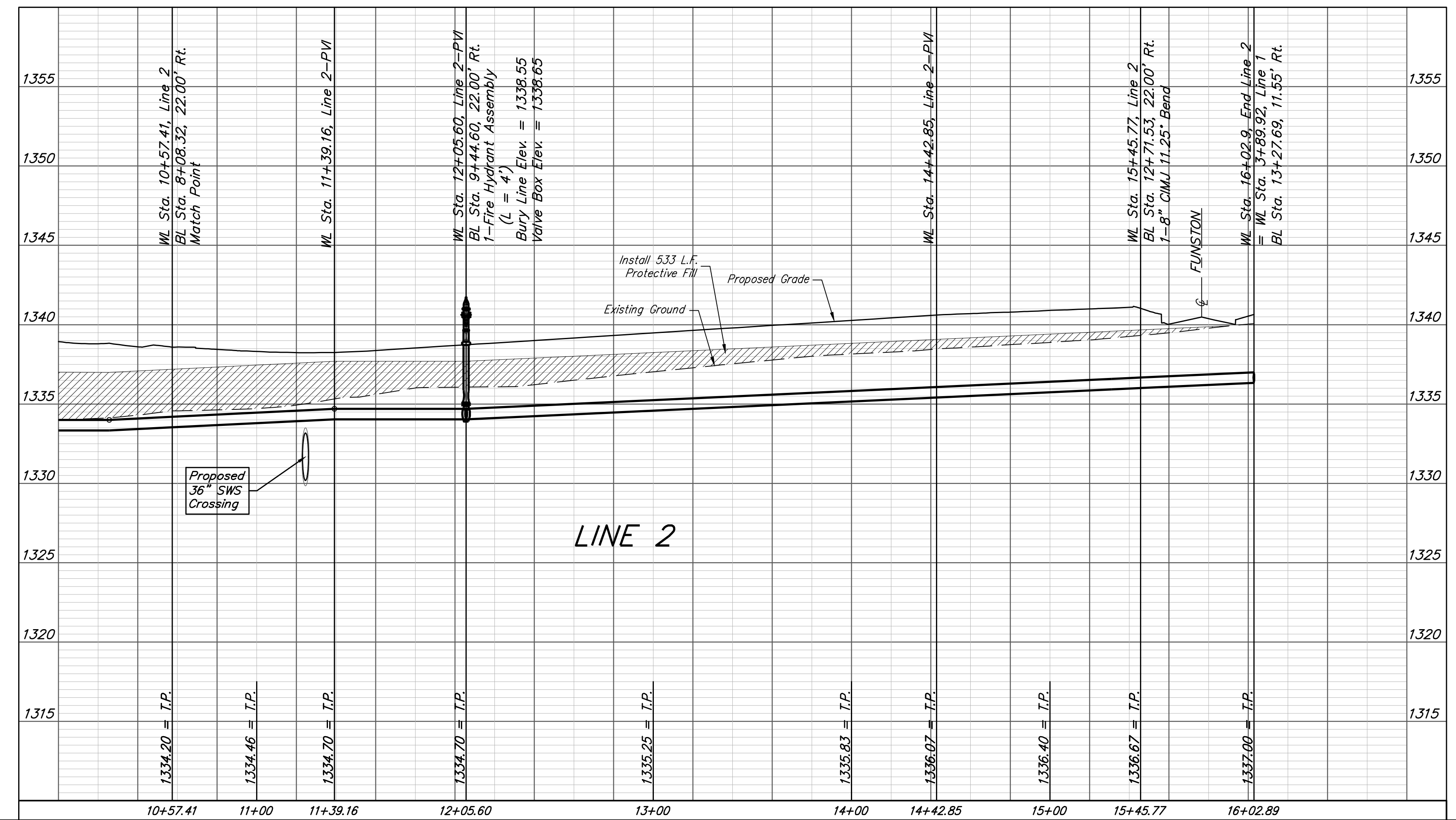
**For Radii Under 200' Contractor to Use Short Pipe Lengths**

**Curve #5**  
 Curve Data Based on Centerline of Pipe  
 Rad. = 151' Delta = 31°01'15" Tangent = 41.91'  
 Arc = 81.75' L.C. = 80.76' Def./Ft. = 11.38379 Min.

Station	Arc	Chord 8' Right	Defl.	Total Defl.
10+57.41	-	-	0'00"00"	0'00"00"
10+75.00	17.59'	18.51'	3'20"14"	3'20"14"
11+00.00	25.00'	26.30'	4'44"36"	8'04"50"
11+25.00	25.00'	26.30'	4'44"36"	12'49"26"
11+39.16	14.16'	14.91'	2'41"11"	15'30"37"

**Curve #6**  
 Curve Data Based on Centerline of Pipe  
 Rad. = 147' Delta = 34°27'23" Tangent = 45.58'  
 Arc = 88.40' L.C. = 87.08' Def./Ft. = 11.69334 Min.

Station	Arc	Chord 8' Right	Defl.	Total Defl.
14+42.85	-	-	0'00"00"	0'00"00"
14+50.00	7.15'	7.54'	1'23"36"	1'23"36"
14+75.00	25.00'	26.33'	4'52"20"	6'15"56"
15+00.00	25.00'	26.33'	4'52"20"	11'08"16"
15+25.00	25.00'	26.33'	4'52"20"	16'00"36"
15+31.25	6.25'	6.59'	1'13"05"	17'13"41"



**Baughman** Willow Creek East 3rd Addition - Phase I  
**LINE 2**  
 Water Distribution System

Baughman Company, P.A. 315 Ellis St. Wichita, KS 67211 P 316-262-7271 F 316-262-0149  
 ENGINEERING | SURVEYING | PLANNING | LANDSCAPE ARCHITECTURE

PROJECT NUMBER 448-90408	DESIGN NBW	DRAWN JAK
REVISIONS:	APPROVED	DATE 3/08/19
	SCALE Noted	SHEET <b>7 OF 15</b>

E:\Projects\Willow Creek East 3rd Addition\_1704\F283\Engineering\Phase I\WTR\_18-11E120\WTR PLANS