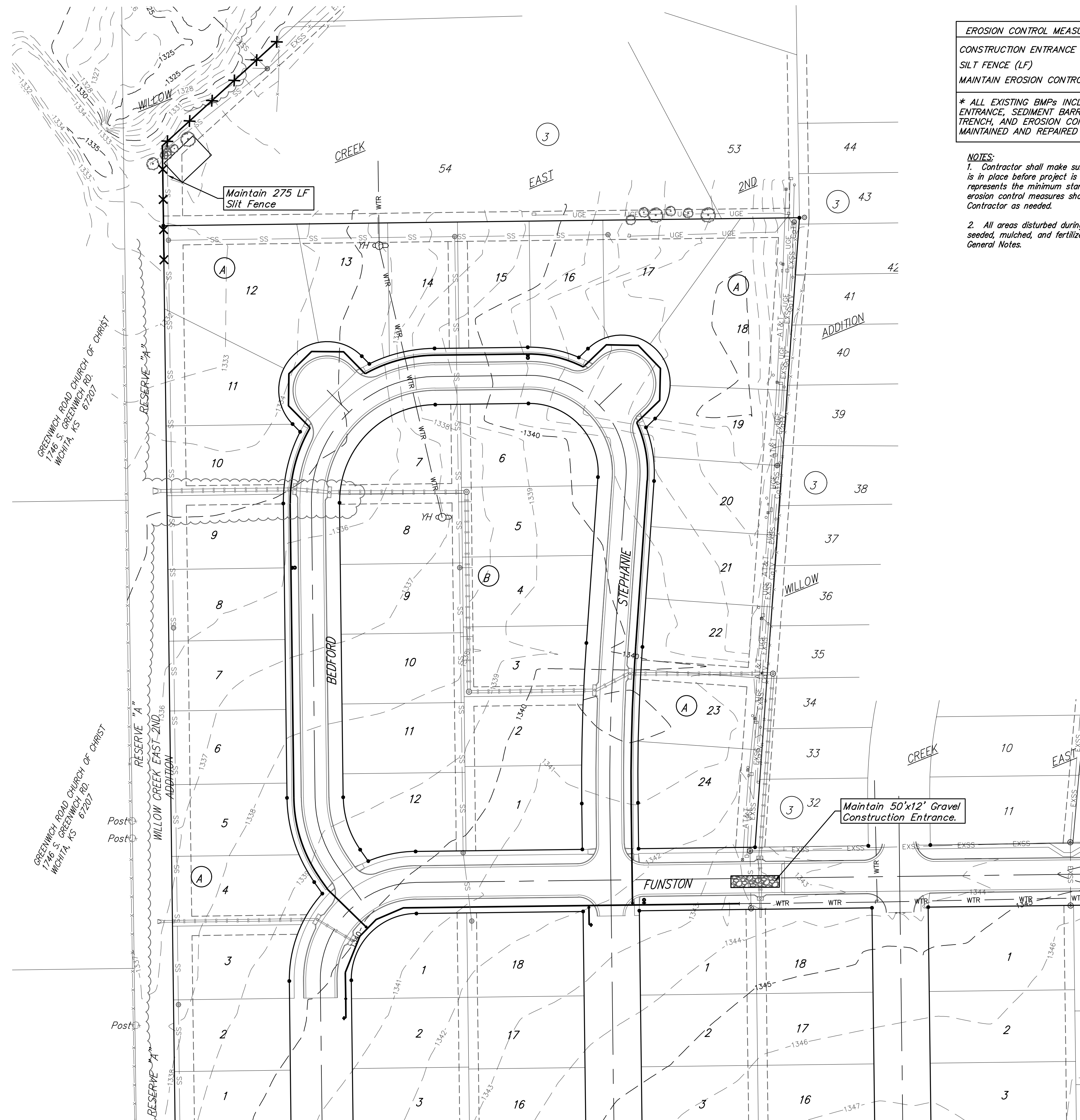


BENCHMARKS:
 Brass benchmark disc in top of curb, east of wheelchair ramp NE cor. of Funston and Lynrae
 Elev. = 1343.69 NAVD88

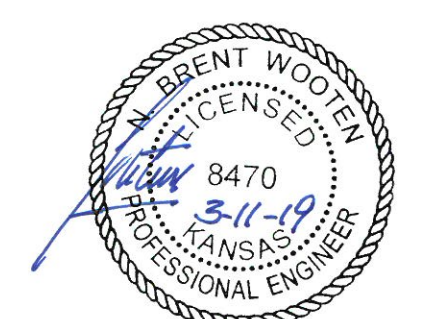
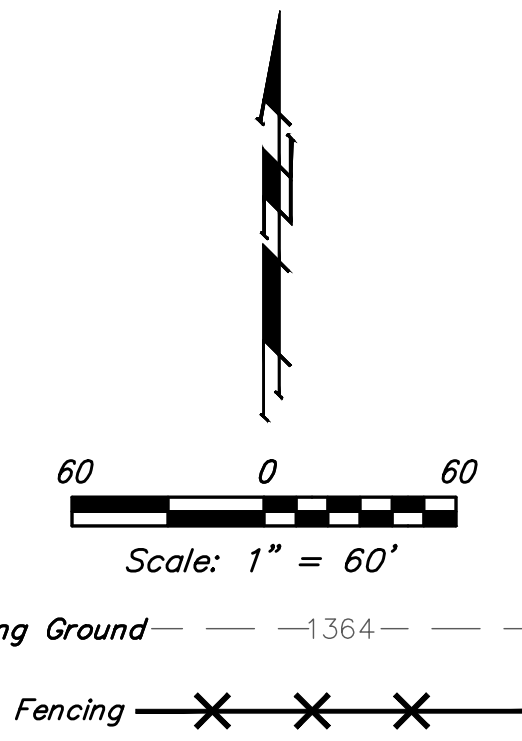
Brass benchmark disc in top of curb, north of wheelchair ramp NW cor. of Funston and Herrington
 Elev. = 1344.71 NAVD88



EROSION CONTROL MEASURE	INSTALL	MAINTAIN
CONSTRUCTION ENTRANCE (EA)	0	1
SILT FENCE (LF)	0	275
MAINTAIN EROSION CONTROL BMP's (LS)	0	1

* ALL EXISTING BMPs INCLUDING CONSTRUCTION ENTRANCE, SEDIMENT BARRIERS, SILT FENCE, CUT-OFF TRENCH, AND EROSION CONTROL MAT SHALL BE MAINTAINED AND REPAIRED IF NECESSARY.

- NOTES:**
- Contractor shall make sure all erosion control is in place before project is accepted. This plan represents the minimum standard. Any additional erosion control measures shall be installed by the Contractor as needed.
 - All areas disturbed during construction shall be seeded, mulched, and fertilized as per Cover Sheet General Notes.



	Willow Creek East 3rd Addition - Phase I	
	EROSION CONTROL Water Distribution System	
<small>Baughman Company, P.A. 315 Ellis St. Wichita, KS 67211 P 316-262-7271 F 316-262-0149 ENGINEERING SURVEYING PLANNING LANDSCAPE ARCHITECTURE</small>		
PROJECT NUMBER 448-90408	DESIGN NBW	DRAWN JAK
REVISIONS:	APPROVED	DATE 3/08/19
	SCALE Noted	
	SHEET	8 OF 15