

FINAL PLAT

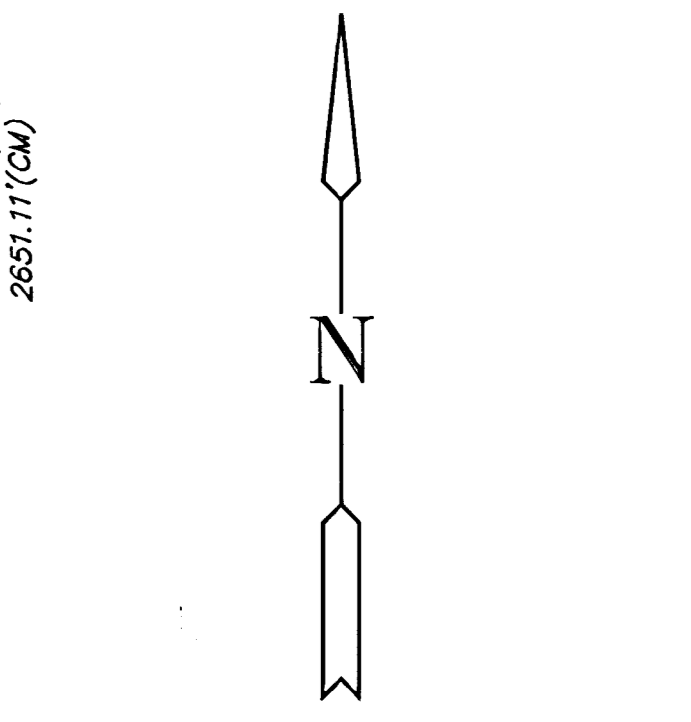
WOODLAND LAKES ESTATES THIRD ADDITION

AN ADDITION TO WICHITA, SEDGWICK COUNTY, KANSAS

NE. Cor., NE. 1/4, Sec. 27,
T27S, R2E, 6th P.M.
Not Fnd., Not Set

NW. Cor., SE. 1/4, Sec. 27,
T27S, R2E, 6th P.M.
Set 3/8" rebar w/
MKEC CLS 39 id cap

NE. Cor., SE. 1/4, Sec. 27,
T27S, R2E, 6th P.M.
Fnd. 1/2" Bar



SCALE: 1" = 100'

LEGEND

- △ = SECTION CORNER MONUMENT FOUND
- = FOUND PROPERTY CORNER
- = SET 5/8" REBAR W/ MKEC CLS #39 CAP
- B.S. = BUILDING SETBACK
- U.E. = UTILITY EASEMENT
- (P) = PLATTED DIMENSION
- (M) = MEASURED DIMENSION
- (CM) = CALCULATED FROM MEASUREMENT
- (D) = DEEDED MEASUREMENT

| MINIMUM PAD ELEVATIONS (LOWEST OPENINGS) | | | |
|--|-------|------------------------|------------------|
| LOT | BLOCK | ELEVATION (CITY DATUM) | ELEVATION (USGS) |
| 1 | 1 | 1342.5 | 155.1 |
| 2 | 1 | 1343.0 | 155.6 |
| 3 | 1 | 1343.0 | 155.6 |
| 4 | 1 | 1343.0 | 155.6 |
| 1 | 3 | 1333.5 | 146.1 |
| 2 | 3 | 1333.0 | 145.6 |
| 3 | 3 | 1332.3 | 144.9 |
| 4 | 3 | 1331.5 | 144.1 |
| 5 | 3 | 1331.0 | 143.6 |
| 6 | 3 | 1330.5 | 143.1 |
| 7 | 3 | 1330.5 | 143.1 |
| 8 | 3 | 1330.5 | 143.1 |
| 16 | 3 | 1330.8 | 143.4 |
| 17 | 3 | 1331.5 | 144.1 |
| 26 | 3 | 1333.5 | 146.1 |
| 27 | 3 | 1334.0 | 146.6 |
| 28 | 3 | 1335.0 | 147.6 |
| 31 | 3 | 1337.0 | 149.6 |
| 6 | 4 | 1332.5 | 145.1 |
| 7 | 4 | 1331.0 | 143.6 |
| 8 | 4 | 1330.8 | 143.4 |
| 11 | 4 | 1330.5 | 143.1 |
| 13 | 4 | 1330.5 | 143.1 |
| 14 | 4 | 1330.5 | 143.1 |
| 15 | 4 | 1330.5 | 143.1 |
| 16 | 4 | 1330.5 | 143.1 |
| 17 | 4 | 1331.0 | 143.6 |
| 23 | 4 | 1328.5 | 139.1 |
| 24 | 4 | 1328.0 | 140.6 |
| 25 | 4 | 1329.5 | 142.1 |
| 26 | 4 | 1329.5 | 142.1 |
| 27 | 4 | 1329.5 | 142.1 |
| 28 | 4 | 1328.0 | 140.6 |

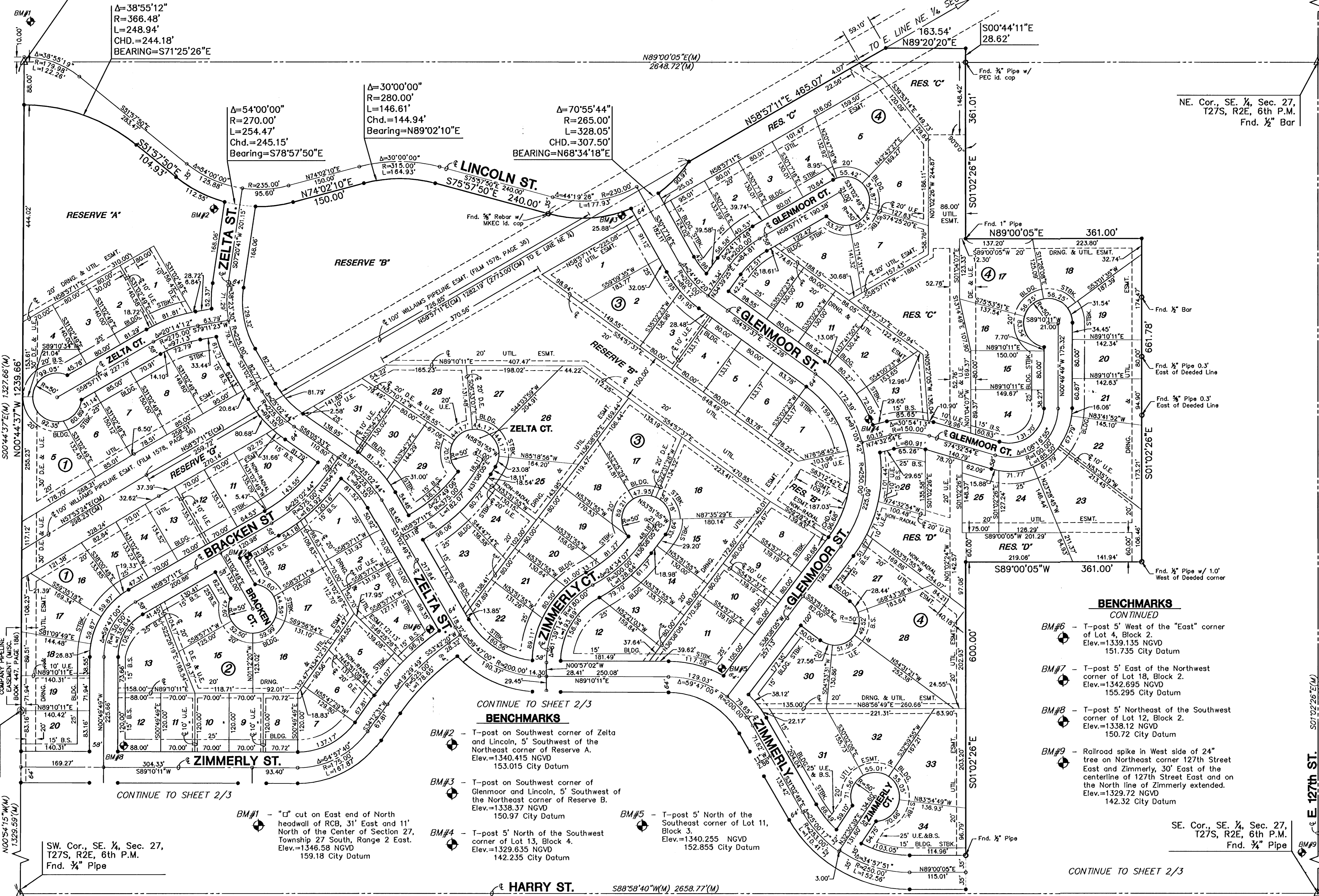
BENCHMARKS

CONTINUED

- BM#6 - T-post 5' West of the "East" corner of Lot 4, Block 2.
Elev.=1339.135 NGVD
151.735 City Datum
- BM#7 - T-post 5' East of the Northwest corner of Lot 18, Block 2.
Elev.=1342.695 NGVD
155.295 City Datum
- BM#8 - T-post 5' Northeast of the Southwest corner of Lot 12, Block 2.
Elev.=1338.12 NGVD
150.72 City Datum
- BM#9 - Railroad spike in West side of 24" tree on Northeast corner 127th Street East and Zimmerly, 30' East of the centerline of 127th Street East and on the North line of Zimmerly extended.
Elev.=1329.72 NGVD
142.32 City Datum

BENCHMARKS

- BM#2 - T-post on Southwest corner of Zelta and Lincoln, 5' Southwest of the Northeast corner of Reserve A.
Elev.=1340.415 NGVD
153.015 City Datum
- BM#3 - T-post on Southwest corner of Glenmoor and Lincoln, 5' Southwest of the Northeast corner of Reserve B.
Elev.=1338.37 NGVD
150.97 City Datum
- BM#4 - T-post 5' North of the Southwest corner of Lot 13, Block 4.
Elev.=1329.635 NGVD
142.235 City Datum
- BM#5 - T-post 5' North of the Southeast corner of Lot 11, Block 3.
Elev.=1340.255 NGVD
152.855 City Datum



S. 1/8 Cor.,
Sec. 27,
T27S, R2E,
6th P.M.
Fnd. Stone

SW. Cor., SE. 1/4, Sec. 27,
T27S, R2E, 6th P.M.
Fnd. 3/4" Pipe

SE. Cor., SE. 1/4, Sec. 27,
T27S, R2E, 6th P.M.
Fnd. 3/4" Pipe

CONTINUE TO SHEET 2/3