

STORM WATER SEWER #570

to serve

FOSSIL RIM ESTATES

CITY OF WICHITA, KANSAS

Neil Cable, P.E. City Engineer

Project Number

468-83449

O.C.A. Number

751318

GENERAL NOTES:

- Contractor will be required to provide notice to utility companies a minimum of twenty-four (24) hours prior to any excavation, as follows:

Kansas One-Call	687-2470
-----------------	----------

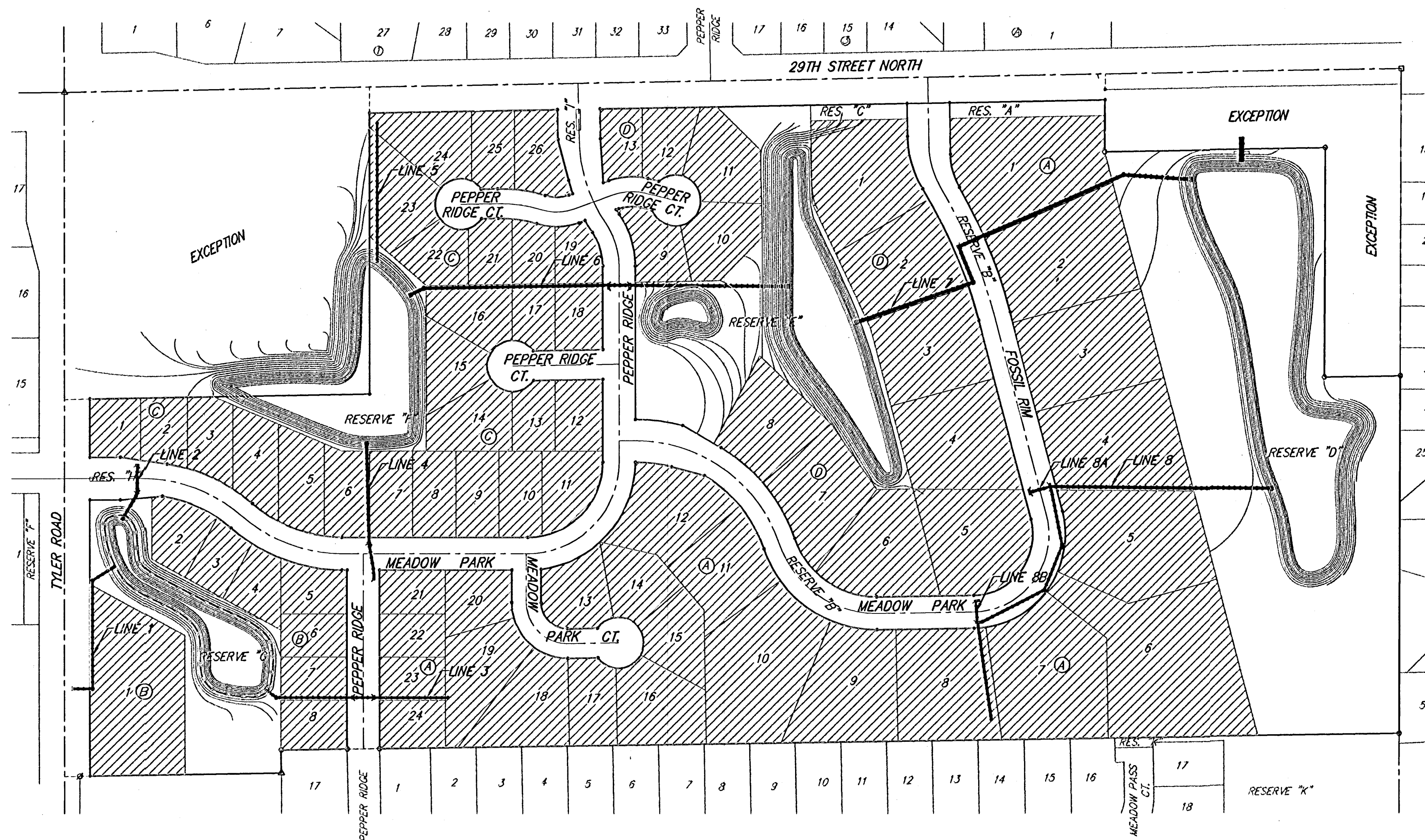
The Contractor must notify the following in case of an emergency:

Cox Communications	262-4270
Kansas Gas Service	1-888-482-4950
Westar Energy	383-8650
Aquila Energy	1-888-482-4950
Southwestern Bell	268-2245
City of Wichita Water Dept.	268-4563
City of Wichita Sewer Maint.	268-4024
City of Wichita Storm Sewer Maint.	268-4090
City of Wichita Traffic Maint.	268-4034
Conoco Pipeline Co.	1-800-231-2551
Williams Pipeline Co.	529-6600
Phillips Pipeline Co.	1-800-766-8230
- Underground utility service lines and overhead utility pole lines are to be adjusted as necessary by others prior to construction unless the plans specifically call for their adjustment by the Contractor or unless the plans specifically identify a utility to be adjusted by its owner during construction. Existing utilities and their location, as shown on the plans, represent the best information obtainable for design. The Contractor will be required to work around existing utilities within the right-of-way which do not conflict with proposed construction.
- Trees and shrubs in public right-of-way which are in direct conflict with proposed new construction shall be removed by the Contractor with the Engineer's approval. Trees and shrubs which are not in direct conflict with proposed new construction shall be saved and protected from damage.
- The Contractor shall give all property owners and/or tenants of developed property abutting the construction of this project a minimum of ten (10) days advance notice prior to start of construction.
- The Contractor shall be responsible for preserving property irons. The Contractor will be required to re-establish any property irons which are damaged or destroyed by his construction operations. Such irons shall be reestablished by a licensed land surveyor in accordance with state laws.
- When connecting to existing inlet or stub, the contractor shall reshape manhole bottom or adjust the existing stub's alignment or elevation as necessary. Cost shall be subsidiary to project.
- All areas disturbed by construction shall be seeded as indicated on mass grading plan.

EARTH WORK TOTALS

	C.Y. Cut	C.Y. Fill
Pond #1 Construction	15,276	25
Pond #2 Construction	50,139	0
Pond #3 Construction	7,093	836
Pond #4 Construction	35,847	405
Pond #5 Construction	46,047	2,764
Mass Grading	36,421	57,318
Total Earthwork	190,823	61,348

Earthwork quantities do not include correction factors and are for reference only.



Benefit District

Benchmarks

City of Wichita Disc, SE corner of
29th & Tyler
32.30 ft South of centerline
30.00 ft East of centerline
9.20 ft Southeast of power pole
43.20 ft Southeast of section corner
Elev. = 178.04 (City Datum)

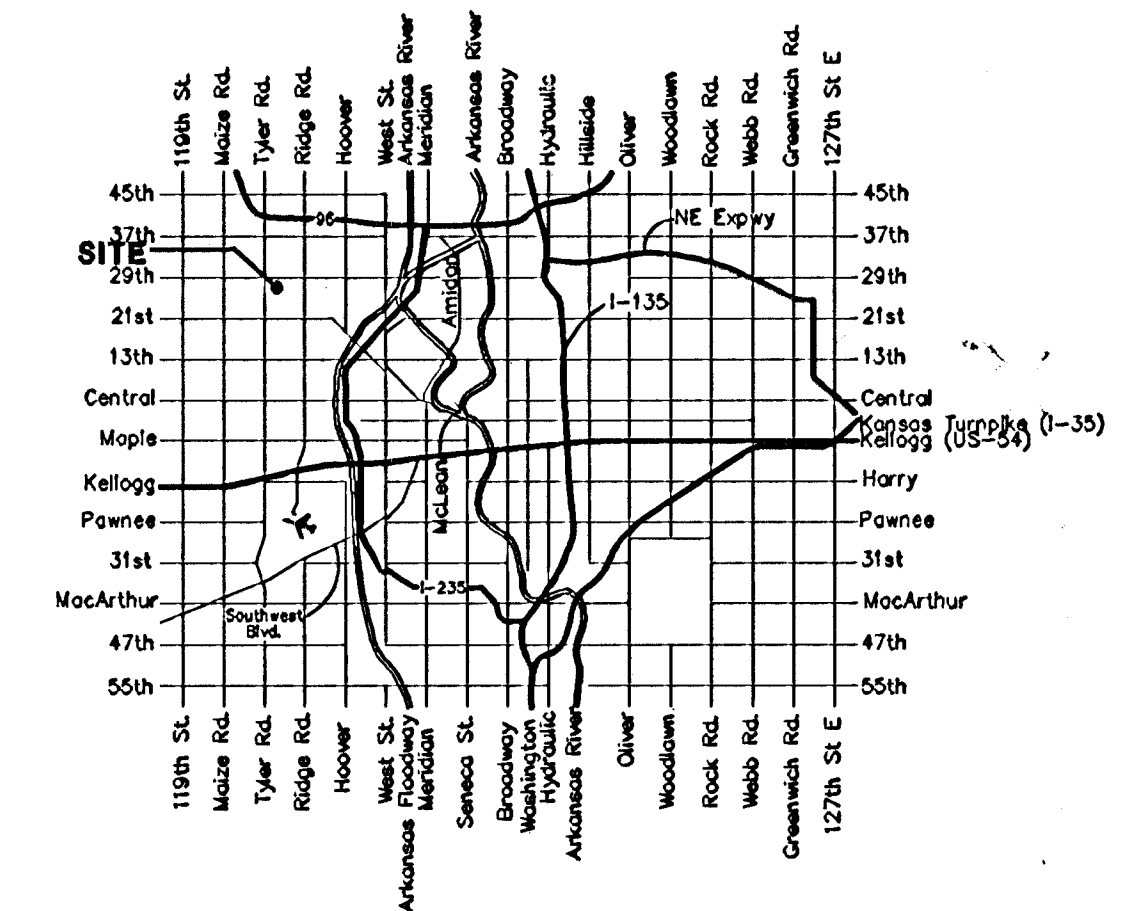
"□" Cut in top of curb on the West
side of Pepper Ridge 65± south of
Lot 8, Blk. B, Fossil Rim Estates.
Elev. = 174.92 (City Datum)

Sheet Index

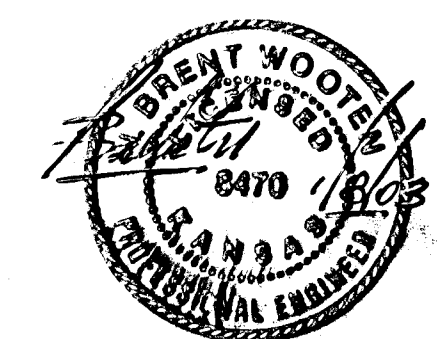
Title Sheet	1
Line 1	2
Line 2	3
Line 3	4
Line 4	5
Line 5	6
Line 6	7-8
Line 7	9-10
Lines 8 & 8A	11-13
Line 8	11
Lines 8 & 8B	13
Std. Type 1A Single Inlet Detail	14
Std. Type 1A Double Inlet Detail	15
Std. Manhole Detail	16
Shallow Manhole Detail	17
Special Yard Inlet Detail	18
Inlet Manhole Detail	19
Headwall Details	20-21
Mass Grading Plans	22-24
Pond Plans	25-28
Pond Cross Sections	29-34
Erosion Control BMPs	35
Copy of Plat	36

*Booked
C-262
6-18-04*

Scale: 1" = 150'



Vicinity Map



January 2003

BAUGHMAN COMPANY P.A.
ENGINEERING, SURVEYING, & PLANNING
316-282-7271 • 315 ELLIS • WICHITA, KANSAS 67211