

BENCHMARKS:
 City of Wichita Disc, SE corner of
 29th & Tyler
 32.30 ft South of centerline
 30.00 ft East of centerline
 9.20 ft Southeast of power pole
 43.20 ft Southeast of section corner
 Elev. = 178.04 (City Datum)

"□" Cut in top of curb on the West
 side of Pepper Ridge 65± south of
 Lot B, Blk. B, Fossil Rim Estates.
 Elev. = 174.92 (City Datum)

Sta 0+00, Begin Line 1
 Core into existing curb
 inlet. Seal & grout
 around new pipe.

CAUTION!
 Ex. OH
 Elec. Line
 Crossing

CAUTION! Ex. Aquila Gas Line
 Crossing. Contact Calvin
 Briggs, Aquila Energy
 941-1608, as soon as
 possible prior to construction
 to schedule and coordinate
 gas line adjustment.

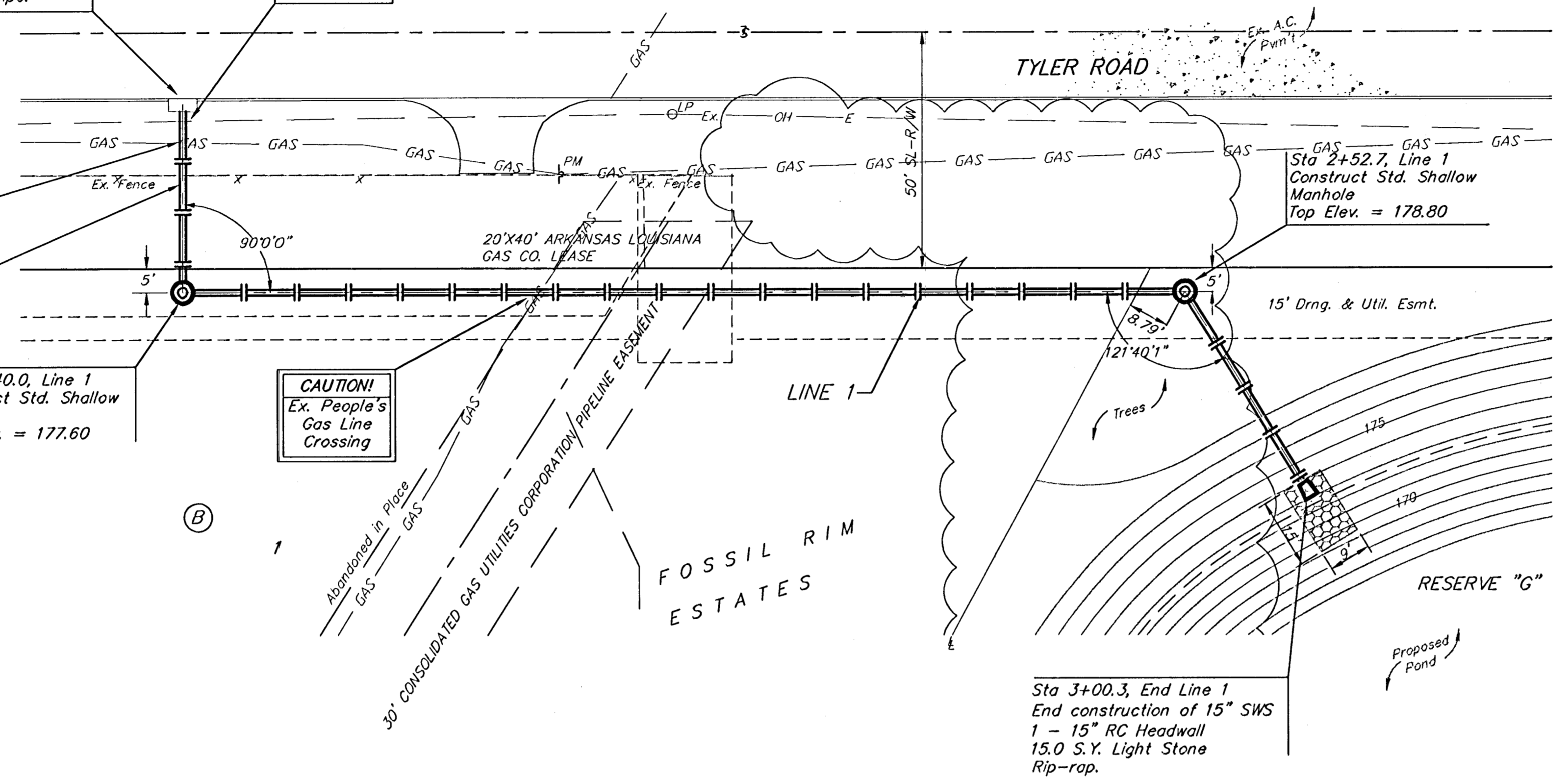
Remove & replace
 fence as necessary
 for sewer
 construction.

Sta 0+40.0, Line 1
 Construct Std. Shallow
 Manhole
 Top Elev. = 177.60

CAUTION!
 Ex. People's
 Gas Line
 Crossing

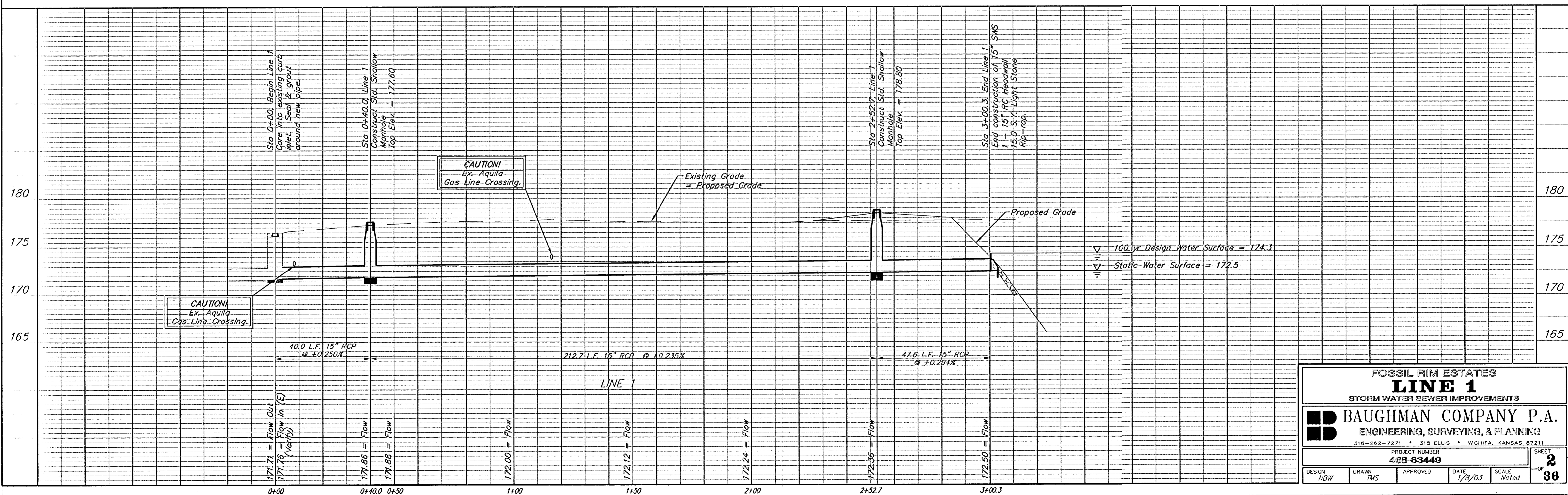
Remove trees only as necessary
 for storm sewer construction.
 Cost of removal to be incidental
 to lump sum bid item "Site
 Clearing & Restoration".

Scale: 1" = 20' Horizontal
 1" = 5' Vertical
 • = Iron



Prop. Pond #1
 Static W.S. = 172.5
 Pond Bottom = 165.5
 100-Yr W.S. = 174.3

Sta 3+00.3, End Line 1
 End construction of 15" SWS
 1 - 15" RC Headwall
 15.0 S.Y. Light Stone
 Rip-rap.



FOSSIL RIM ESTATES
LINE 1
 STORM WATER SEWER IMPROVEMENTS

BAUGHMAN COMPANY P.A.
 ENGINEERING, SURVEYING, & PLANNING
 316-262-7271 • 313 ELLIS • WICHITA, KANSAS 67211

PROJECT NUMBER: **488-83449** SHEET: **2**
 DESIGN: NBW DRAWN: TMS APPROVED: DATE: 1/8/03 SCALE: Noted OF: **36**