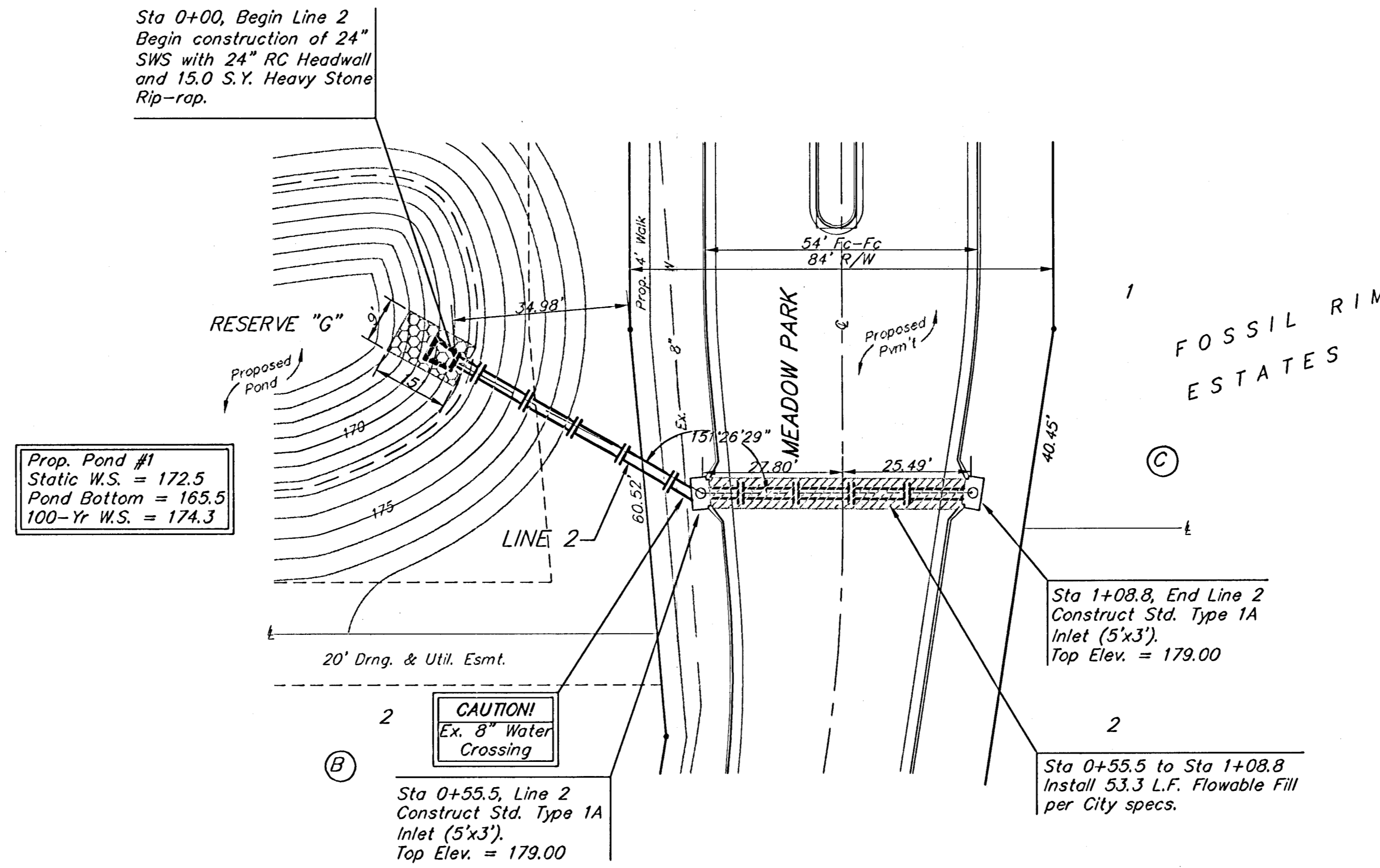


BENCHMARKS:
 City of Wichita Disc, SE corner of
 29th & Tyler
 32.30 ft South of centerline
 30.00 ft East of centerline
 9.20 ft Southeast of power pole
 43.20 ft Southeast of section corner
 Elev. = 178.04 (City Datum)

"□" Cut in top of curb on the West
 side of Pepper Ridge 65± south of
 Lot 8, Blk. B, Fossil Rim Estates.
 Elev. = 174.92 (City Datum)

Scale: 1" = 20' Horizontal
 1" = 5' Vertical
 • = Iron



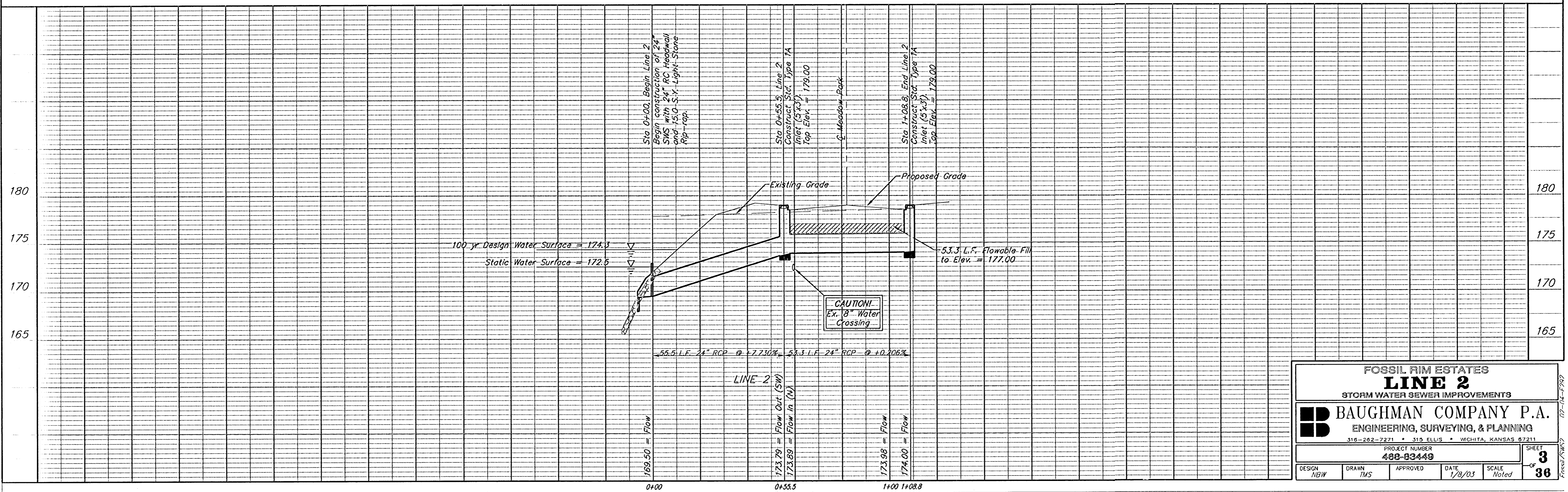
Prop. Pond #1
 Static W.S. = 172.5
 Pond Bottom = 165.5
 100-Yr W.S. = 174.3

CAUTION!
 Ex. 8" Water
 Crossing

Sta 0+55.5, Line 2
 Construct Std. Type 1A
 Inlet (5'x3').
 Top Elev. = 179.00

Sta 1+08.8, End Line 2
 Construct Std. Type 1A
 Inlet (5'x3').
 Top Elev. = 179.00

Sta 0+55.5 to Sta 1+08.8
 Install 53.3 L.F. Flowable Fill
 per City specs.



FOSSIL RIM ESTATES			
LINE 2			
STORM WATER SEWER IMPROVEMENTS			
BAUGHMAN COMPANY P.A.			
ENGINEERING, SURVEYING, & PLANNING			
316-262-7271 • 313 ELLIS • WICHITA, KANSAS 67211			
PROJECT NUMBER			
488-83449			
DESIGN	DRAWN	APPROVED	DATE
NBW	TMS		1/8/03
SCALE			SHEET
Noted			36

02-04-2990
Fossil/SWS