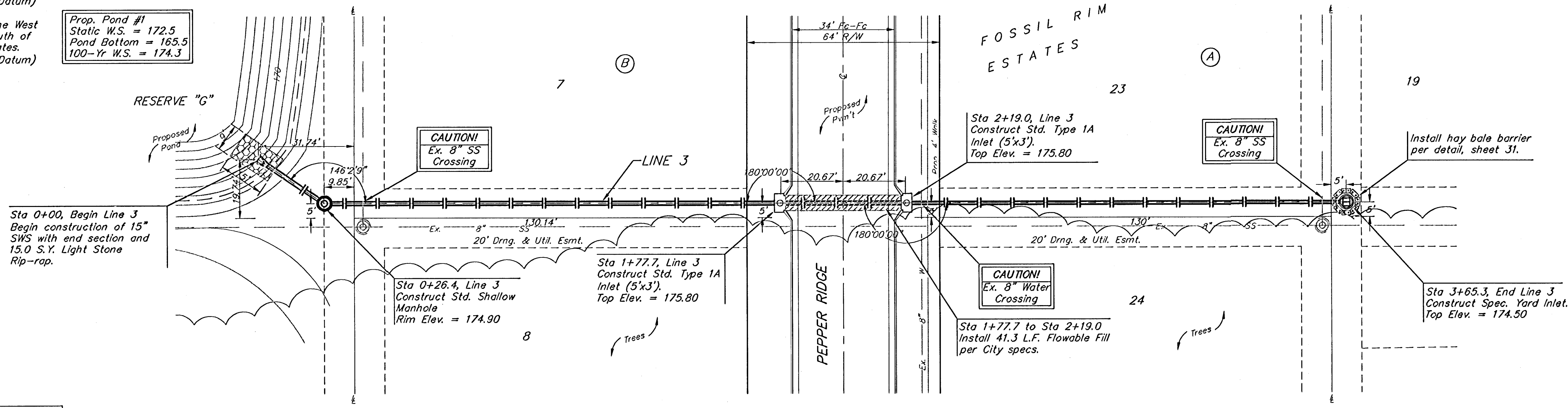
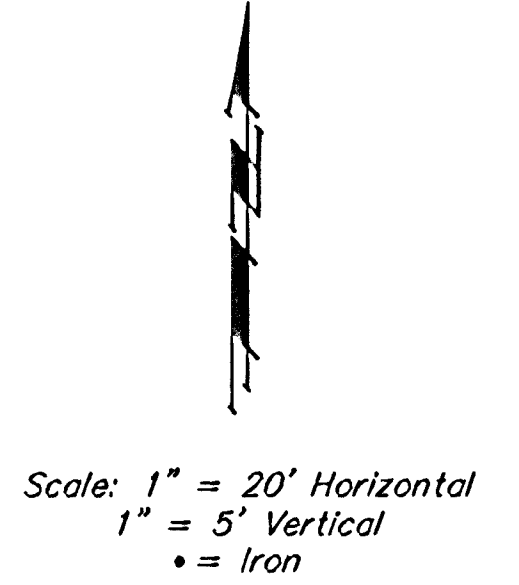


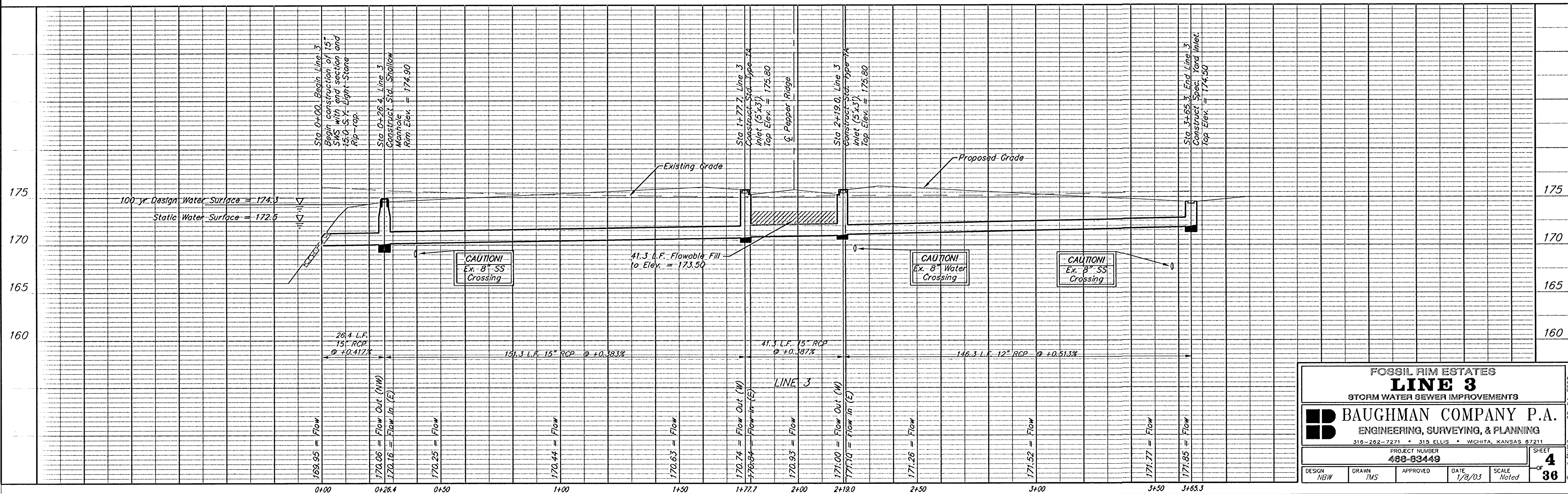
BENCHMARKS:
 City of Wichita Disc, SE corner of
 29th & Tyler
 32.30 ft South of centerline
 30.00 ft East of centerline
 9.20 ft Southeast of power pole
 43.20 ft Southeast of section corner
 Elev. = 178.04 (City Datum)

"□" Cut in top of curb on the West
 side of Pepper Ridge 65± south of
 Lot B, Blk. B, Fossil Rim Estates.
 Elev. = 174.92 (City Datum)

Prop. Pond #1
 Static W.S. = 172.5
 Pond Bottom = 165.5
 100-Yr W.S. = 174.3



Remove trees only as necessary
 for storm sewer construction.
 Cost of removal to be incidental
 to lump sum bid item "Site
 Clearing & Restoration".



FOSSIL RIM ESTATES
LINE 3
 STORM WATER SEWER IMPROVEMENTS

BAUGHMAN COMPANY P.A.
 ENGINEERING, SURVEYING, & PLANNING
 315-262-2271 • 315 ELLIS • WICHITA, KANSAS 67211

PROJECT NUMBER
480-83449

DESIGN NBW	DRAWN TMS	APPROVED	DATE 1/8/03
SCALE Noted			SHEET 4 OF 36

02-14-F290
Fossil/RMS/3