

BENCHMARKS:
 City of Wichita Disc, SE corner of
 29th & Tyler
 32.30 ft South of centerline
 30.00 ft East of centerline
 9.20 ft Southeast of power pole
 43.20 ft Southeast of section corner
 Elev. = 178.04 (City Datum)

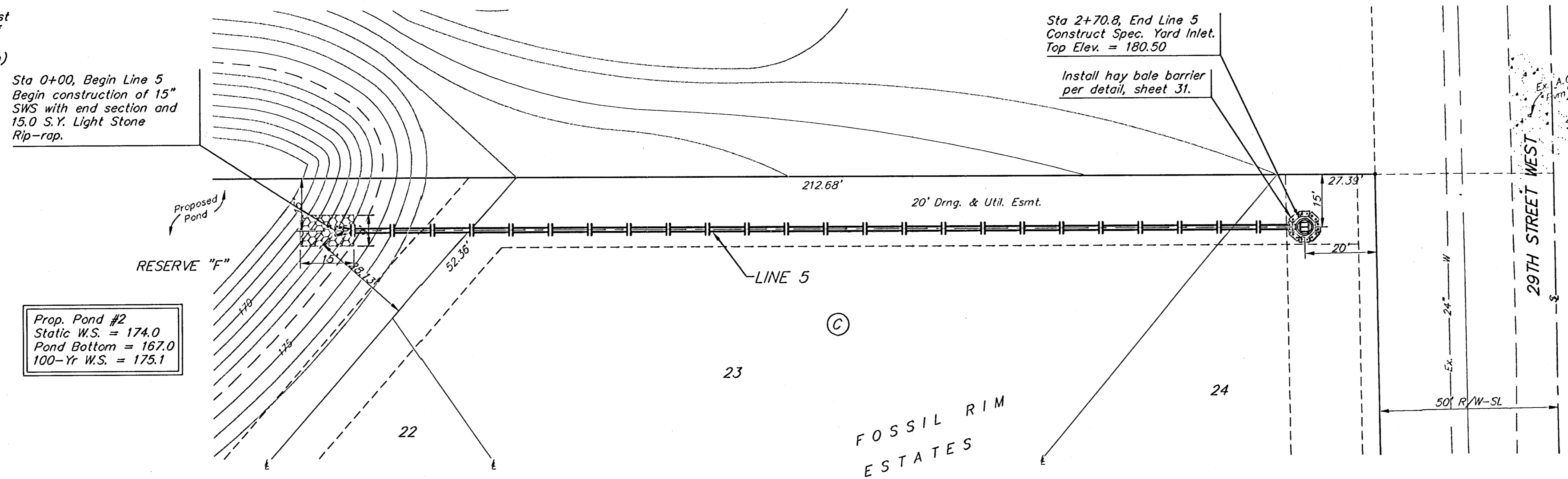
"□" Cut in top of curb on the West
 side of Pepper Ridge 65± south of
 Lot 8, Blk. B, Fossil Rim Estates.
 Elev. = 174.92 (City Datum)

Sta 0+00, Begin Line 5
 Begin construction of 15"
 SWS with end section and
 15.0 S.Y. Light Stone
 Rip-rap.

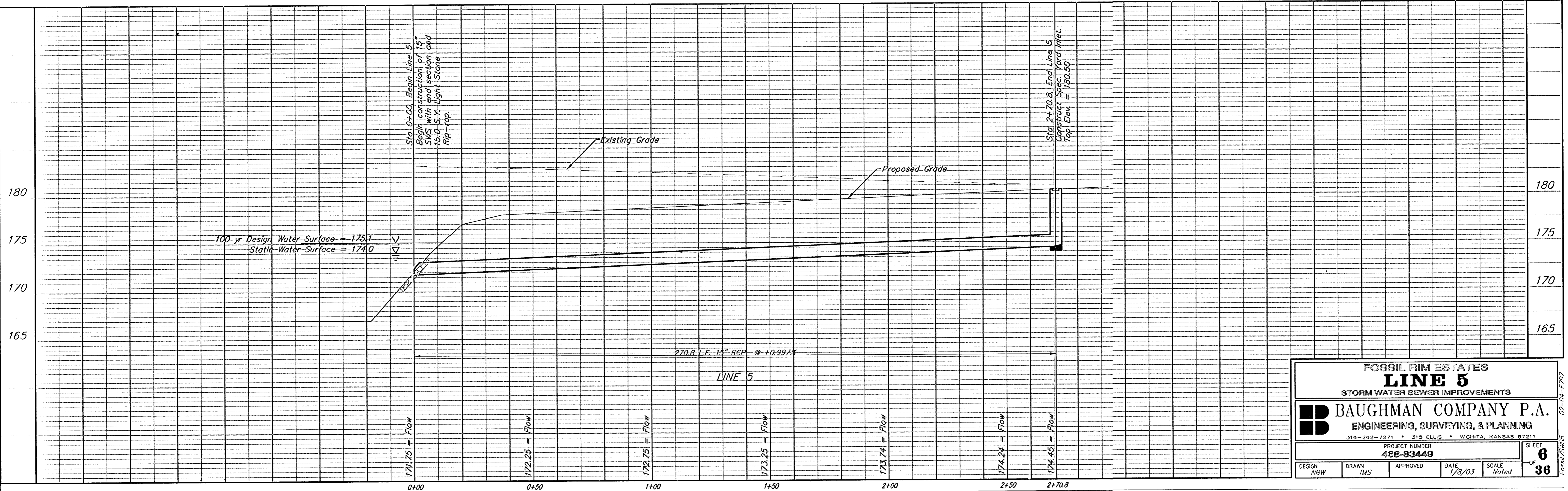
Sta 2+70.8, End Line 5
 Construct Spec. Yard Inlet.
 Top Elev. = 180.50

Install hay bale barrier
 per detail, sheet 31.

Scale: 1" = 20' Horizontal
 1" = 5' Vertical
 • = Iron



Prop. Pond #2
 Static W.S. = 174.0
 Pond Bottom = 167.0
 100-Yr W.S. = 175.1



FOSSIL RIM ESTATES					
LINE 5					
STORM WATER SEWER IMPROVEMENTS					
BAUGHMAN COMPANY P.A.					
ENGINEERING, SURVEYING, & PLANNING					
315-262-7271 • 315 ELLIS • WICHITA, KANSAS 67211					
PROJECT NUMBER					
488-83449					
DESIGN	DRAWN	APPROVED	DATE	SCALE	SHEET
NBW	IMS		1/8/03	Noted	6
					OF
					36