

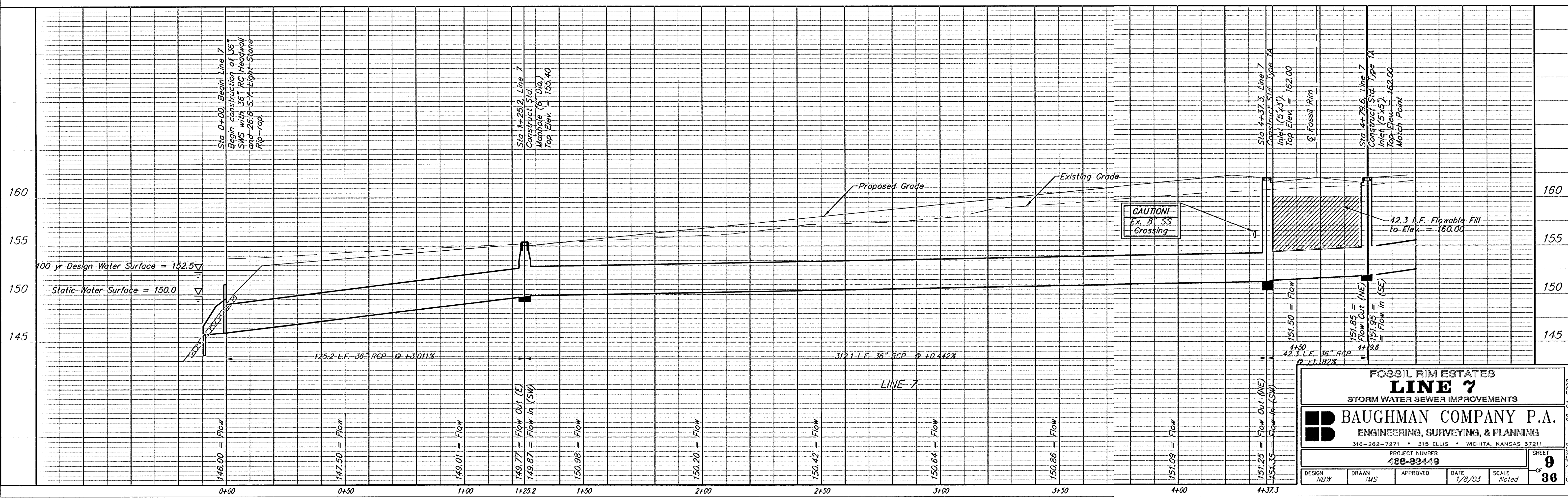
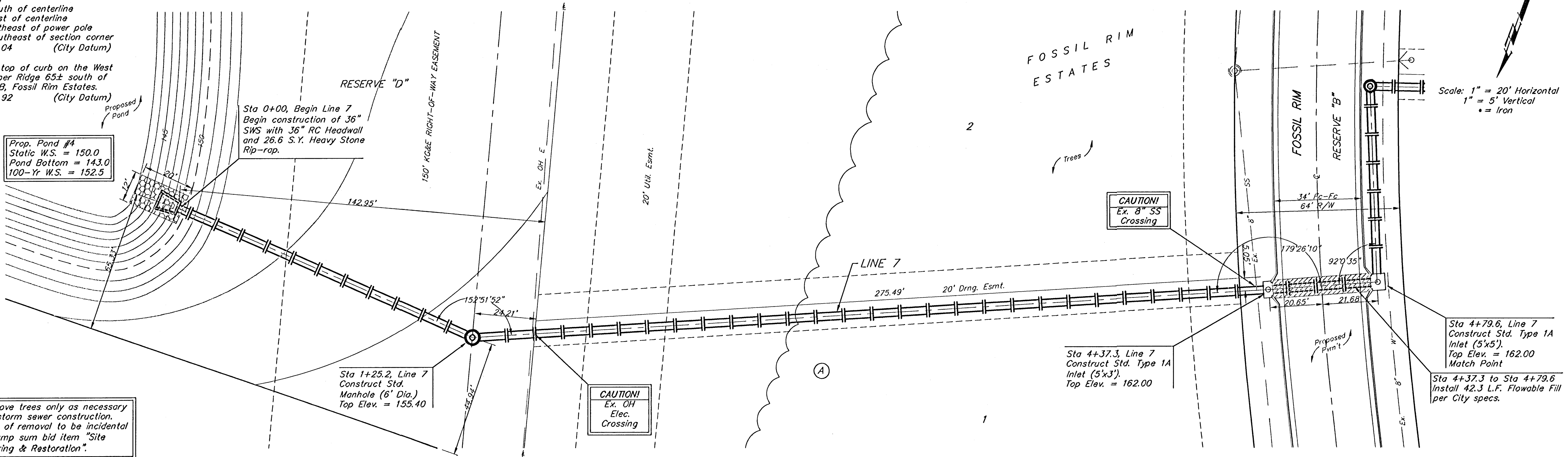
BENCHMARKS:
 City of Wichita Disc, SE corner of
 29th & Tyler
 32.30 ft South of centerline
 30.00 ft East of centerline
 9.20 ft Southeast of power pole
 43.20 ft Southeast of section corner
 Elev. = 178.04 (City Datum)

"□" Cut in top of curb on the West
 side of Pepper Ridge 65± south of
 Lot 8, Blk. B, Fossil Rim Estates.
 Elev. = 174.92 (City Datum)

Prop. Pond #4
 Static W.S. = 150.0
 Pond Bottom = 143.0
 100-Yr W.S. = 152.5

Remove trees only as necessary
 for storm sewer construction.
 Cost of removal to be incidental
 to lump sum bid item "Site
 Clearing & Restoration".

Scale: 1" = 20' Horizontal
 1" = 5' Vertical
 • = Iron



FOSSIL RIM ESTATES
LINE 7
 STORM WATER SEWER IMPROVEMENTS

BAUGHMAN COMPANY P.A.
 ENGINEERING, SURVEYING, & PLANNING
 315-262-7271 • 315 ELLIS • WICHITA, KANSAS 67211

PROJECT NUMBER
488-83449

DESIGN: NSW DRAWN: TMS APPROVED: _____ DATE: 1/8/03 SCALE: Noted

SHEET **9** OF **38**