

**BENCHMARKS:**  
 City of Wichita Disc, SE corner of  
 29th & Tyler  
 32.30 ft South of centerline  
 30.00 ft East of centerline  
 9.20 ft Southeast of power pole  
 43.20 ft Southeast of section corner  
 Elev. = 178.04 (City Datum)

"□" Cut in top of curb on the West side of Pepper Ridge 65± south of Lot 8, Blk. B, Fossil Rim Estates.  
 Elev. = 174.92 (City Datum)

Sta 0+00, Begin Line 8  
 Begin construction of 30" SWS with 30" RC Headwall and 26.6 S.Y. Heavy Stone Rip-rap.

Prop. Pond #4  
 Static W.S. = 150.0  
 Pond Bottom = 143.0  
 100-Yr W.S. = 152.5

Remove trees only as necessary for storm sewer construction. Cost of removal to be incidental to lump sum bid item "Site Clearing & Restoration".

CAUTION!  
 Ex. OH Elec. Crossing

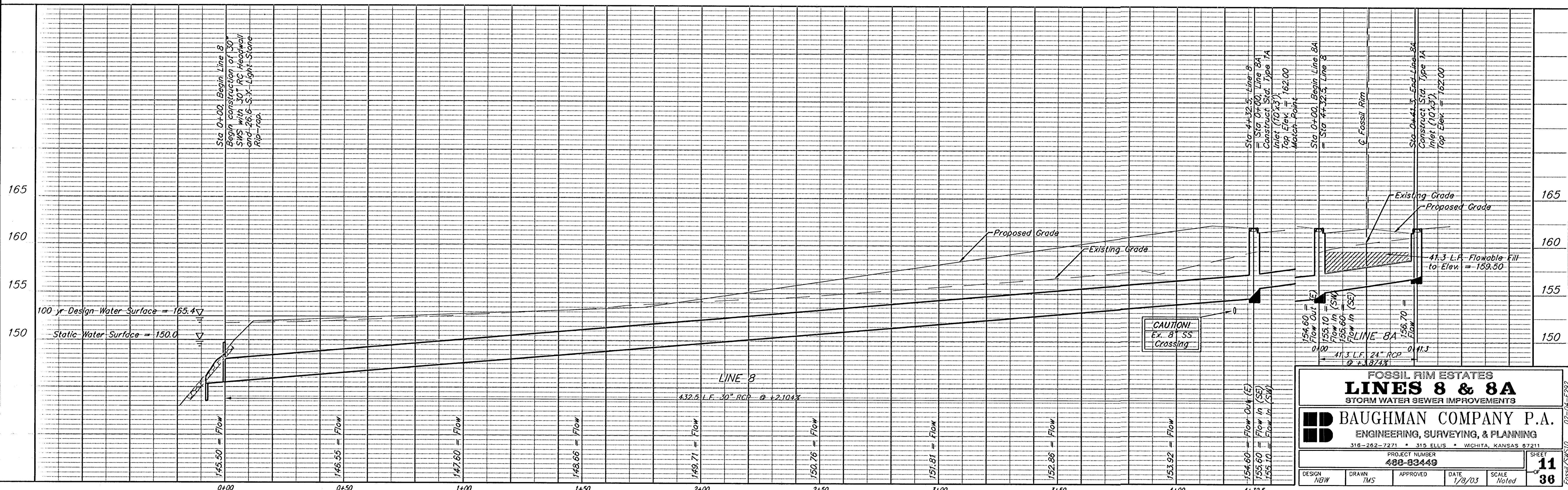
CAUTION!  
 Ex. 8" SS Crossing

Sta 4+32.5, Line 8 = Sta 0+00, Line 8A  
 Construct Std. Type 1A Inlet (10'x3').  
 Top Elev. = 162.00  
 Match Point

Scale: 1" = 20' Horizontal  
 1" = 5' Vertical  
 • = Iron

Sta 0+41.3, End Line 8A  
 Construct Std. Type 1A Inlet (10'x3').  
 Top Elev. = 162.00  
 Sta 0+00 to Sta 0+41.3  
 Install 41.3 L.F. Flowable Fill per City specs.

FOSSIL RIM ESTATES



**FOSSIL RIM ESTATES**  
**LINES 8 & 8A**  
 STORM WATER SEWER IMPROVEMENTS

**BAUGHMAN COMPANY P.A.**  
 ENGINEERING, SURVEYING, & PLANNING  
 318-262-7271 • 315 ELLIS • WICHITA, KANSAS 67211

PROJECT NUMBER: **480-83449**

DESIGN: NBW	DRAWN: TMS	APPROVED:	DATE: 1/8/03	SCALE: Noted
-------------	------------	-----------	--------------	--------------

SHEET **11** OF **36**