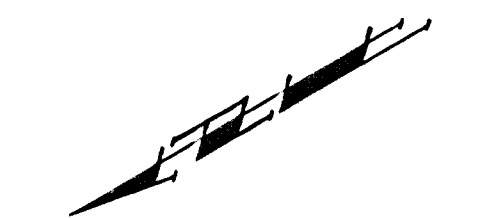


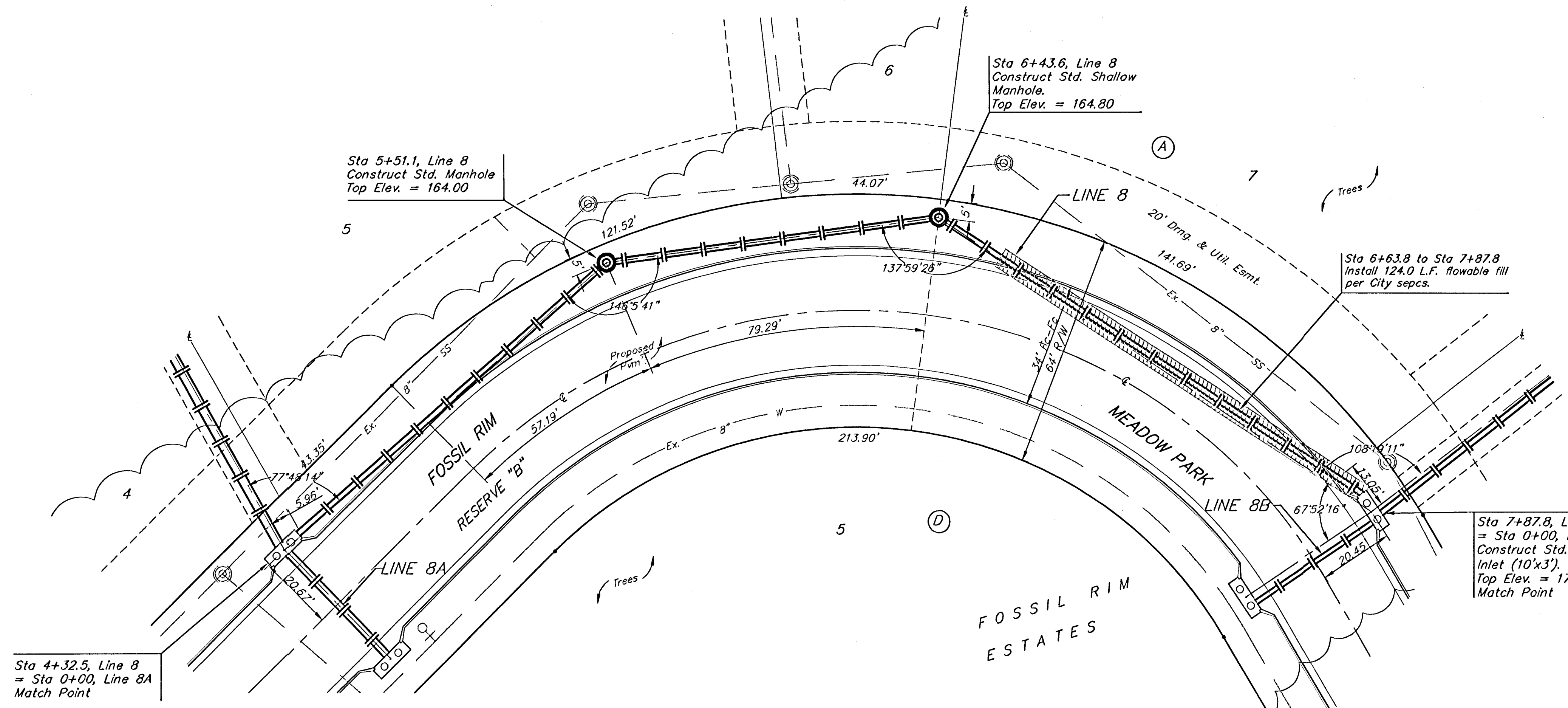
BENCHMARKS:
 City of Wichita Disc, SE corner of
 29th & Tyler
 32.30 ft South of centerline
 30.00 ft East of centerline
 9.20 ft Southeast of power pole
 43.20 ft Southeast of section corner
 Elev. = 178.04
 (City Datum)

"□" Cut in top of curb on the West
 side of Pepper Ridge 65± south of
 Lot 8, Blk. B, Fossil Rim Estates.
 Elev. = 174.92
 (City Datum)

Remove trees only as necessary
 for storm sewer construction.
 Cost of removal to be incidental
 to lump sum bid item "Site
 Clearing & Restoration".

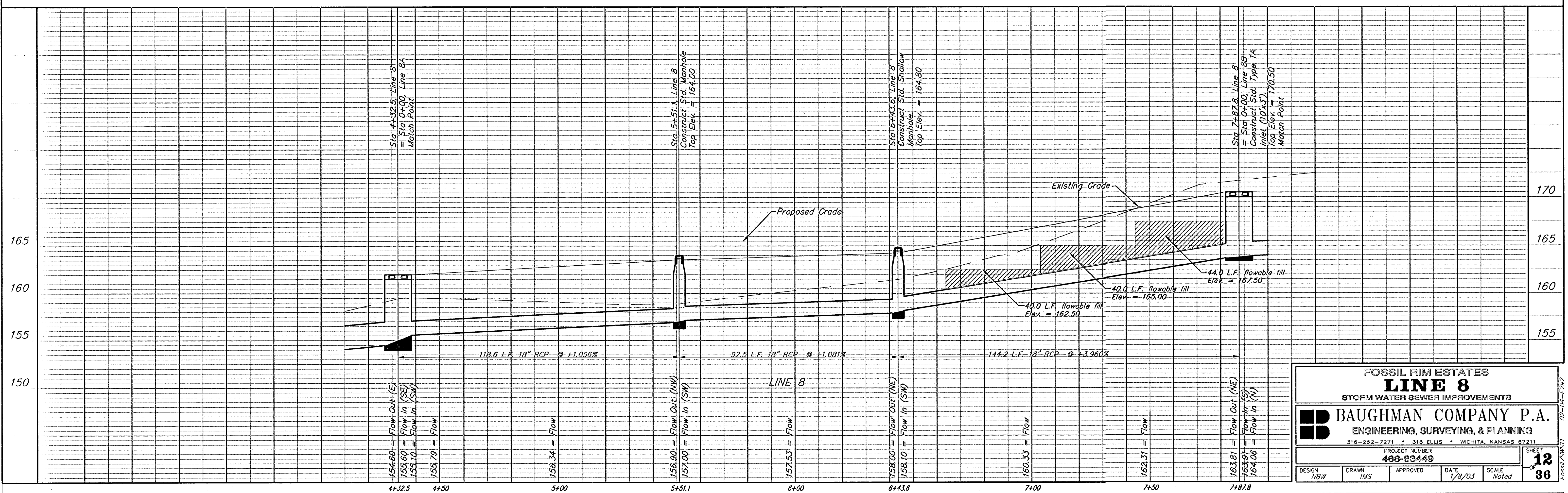


Scale: 1" = 20' Horizontal
 1" = 5' Vertical
 • = Iron



Sta 4+32.5, Line 8
 = Sta 0+00, Line 8A
 Match Point

Sta 7+87.8, Line 8
 = Sta 0+00, Line 8B
 Construct Std. Type 1A
 Inlet (10'x3').
 Top Elev. = 170.50
 Match Point



FOSSIL RIM ESTATES			
LINE 8			
STORM WATER SEWER IMPROVEMENTS			
BAUGHMAN COMPANY P.A.			
ENGINEERING, SURVEYING, & PLANNING			
318-202-7271 • 319 ELLIS • WICHITA, KANSAS 67211			
PROJECT NUMBER 488-83449			
DESIGN NBW	DRAWN TMS	APPROVED	DATE 1/8/03
		SCALE Noted	SHEET 12 OF 36