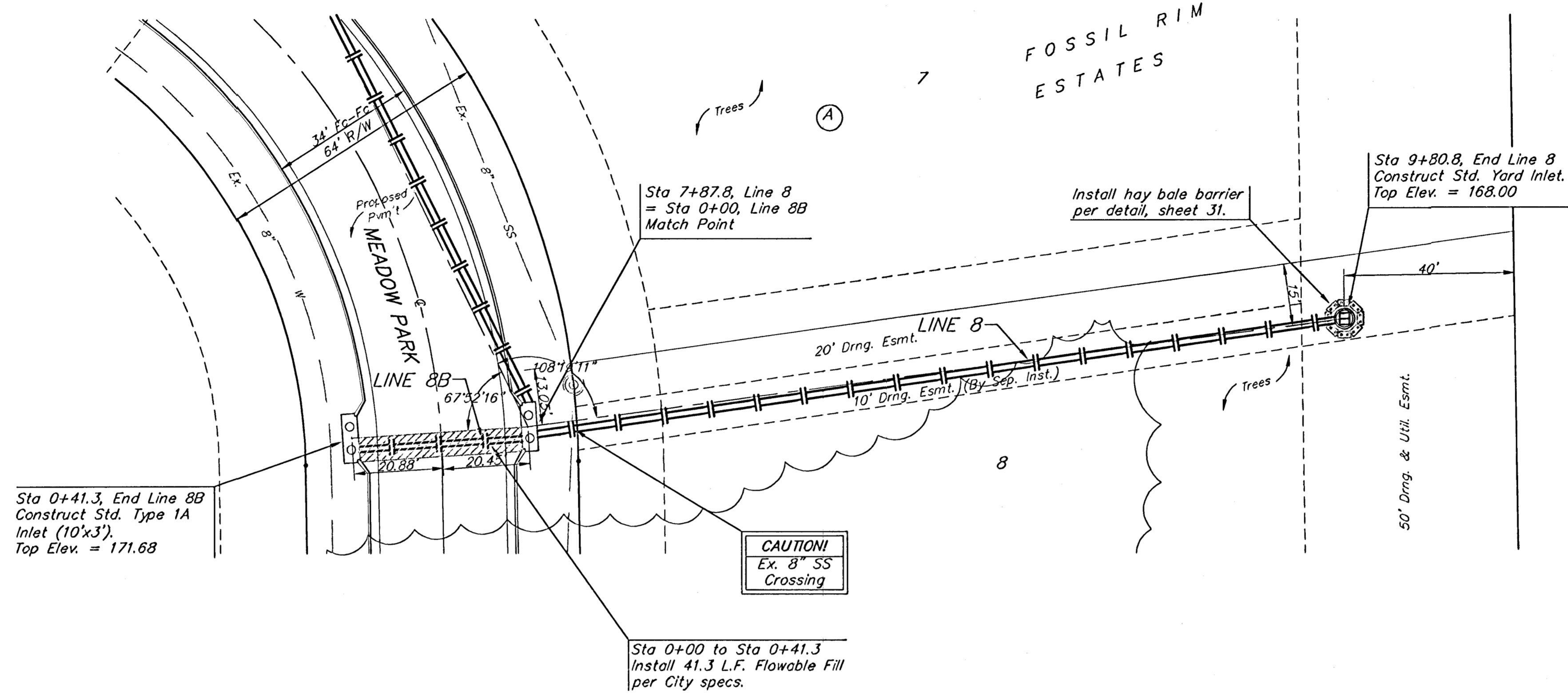


BENCHMARKS:
 City of Wichita Disc, SE corner of
 29th & Tyler
 32.30 ft South of centerline
 30.00 ft East of centerline
 9.20 ft Southeast of power pole
 43.20 ft Southeast of section corner
 Elev. = 178.04 (City Datum)

"□" Cut in top of curb on the West
 side of Pepper Ridge 65± south of
 Lot 8, Blk. B, Fossil Rim Estates.
 Elev. = 174.92 (City Datum)

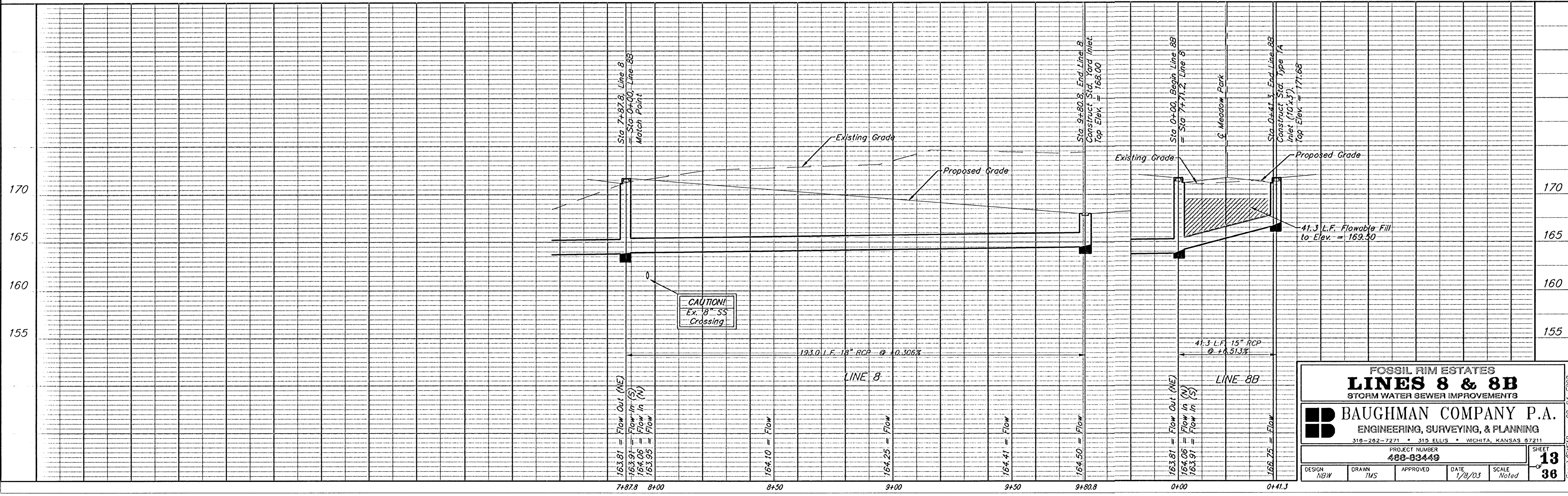
Scale: 1" = 20' Horizontal
 1" = 5' Vertical
 • = Iron



Remove trees only as necessary
 for storm sewer construction.
 Cost of removal to be incidental
 to lump sum bid item "Site
 Clearing & Restoration".

CAUTION!
 Ex. 8" SS
 Crossing

Sta 0+00 to Sta 0+41.3
 Install 41.3 L.F. Flowable Fill
 per City specs.



CAUTION!
 Ex. 8" SS
 Crossing

FOSSIL RIM ESTATES
LINES 8 & 8B
 STORM WATER SEWER IMPROVEMENTS

BAUGHMAN COMPANY P.A.
 ENGINEERING, SURVEYING, & PLANNING
315-262-7271 • 315 ELLIS • WICHITA, KANSAS 67211

PROJECT NUMBER 488-83449		SHEET 13	
DESIGN NBW	DRAWN TUS	APPROVED	DATE 1/8/03
		SCALE Noted	38