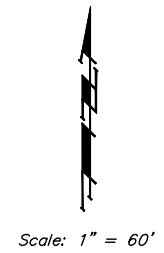


BENCHMARKS:
 BM #1: BENT 60d NAIL IN LIGHT POLE,
 55' SSW. OF THE E1/4 COR., SEC. 13,
 TWP. 26-S, R-1-W.
 ELEV. = 1336.54 NGVD29

BM #2: RAILROAD SPIKE IN E. FACE OF
 N. "H" POLE, 60'± S. OF N. LINE, S1/2,
 NE1/4, SEC. 13, TWP. 26-S, R-1-W
 ELEV. = 1335.93 NGVD29

BM #3: "□" CUT ON TOP OF NE COR.
 OF WATER VAULT, 437'± E. & 54'± N.
 OF S1/4 COR., SEC. 13, TWP. 26-S,
 R-1-W.
 ELEV. = 1334.81 NGVD29



GENERAL NOTES:

- Contractor to strip top 6" of soil in areas of pond construction and street R/W before mass grading and stockpile. Top soil stockpile to be redistributed over reserves above water surface.
- Compaction of 95% standard proctor density shall be obtained in all street R/W's, 90% in all other areas.
- It shall be the Contractor's responsibility to protect any existing utilities during mass grading. Any damage done to these systems by Contractor or subcontractor shall be repaired at no additional cost to the project.
- Unless specifically noted on plans, trees and shrubs in public right-of-way which are in direct conflict with proposed new construction shall be removed by the Contractor ONLY with the Developer or Baughman Company approval. Trees and shrubs which are not in direct conflict with proposed new construction shall be saved and protected from damage. Trees that must be trimmed shall be side trimmed with a chainsaw by the Contractor.
- All areas disturbed during construction within Reserves A, B, C, above Static Water Surface, and Meridian Street R/W shall be seeded, mulched, and fertilized as follows (Permanent Seeding) unless otherwise noted:

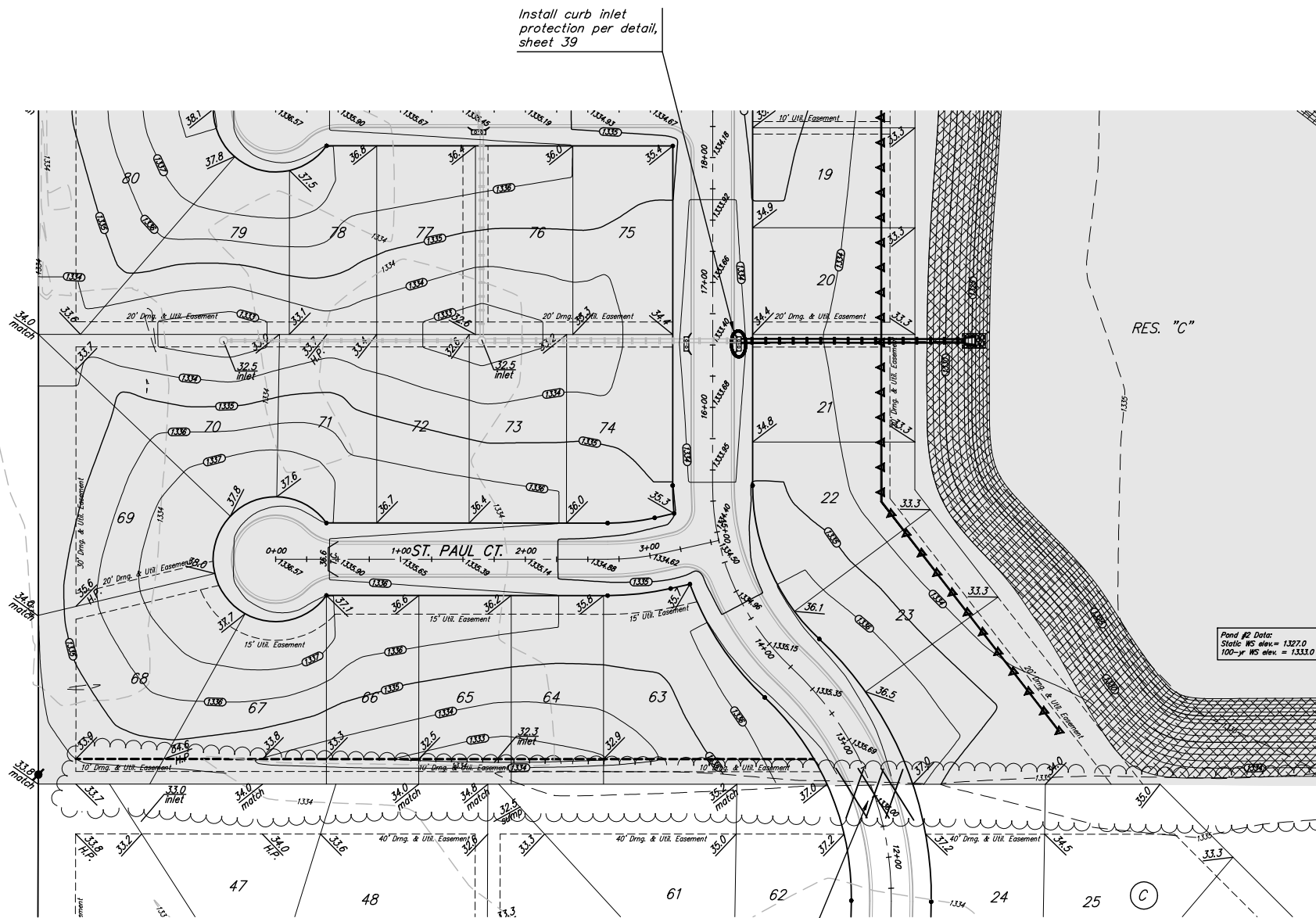
Seed: Kansas Premium Fescue Blend: 10 lbs./1000 sq. ft.
Mulch: Prairie Hay: 2 tons/acre (Not needed where erosion control mat is installed)
Fertilizer: 12-24-12: 850 lbs./acre

All other areas disturbed during construction shall be seeded at 300 lbs./acre with Rye Grass and mulched with prairie hay at 2 tons/acre immediately following construction in that area unless otherwise noted. All costs associated with seeding, mulching, and fertilizing shall be included in bid item "Project Seeding." All seeding operations shall conform to City of Wichita Standard Specifications.

EARTHWORK TOTALS*		
	CY EXC	CY FILL
POND #1	22,628	0
POND #2	115,786	0
MASS GRADING	37,197	121,054
TOTALS	175,611	116,677

Excess Excavation to be placed as shown on sheets 6 & 7.

* Earthwork Quantities are unadjusted and are for reference only. Quantity does not include overexcavation for Pond Liner.



Remove Trees within Street R/W only as directed by the engineer. Cost shall be included in "Site Clearing & Restoration."

Mass Grading and Erosion Control Plan Legend

- Proposed Storm Sewer
- Proposed Grade
- Existing Grade
- Silt Fence
- Erosion Control Berm
- Straw Bale Barrier
- Drop Inlet Sed. Barrier
- Curb Inlet Sed. Barrier
- Remove Trees
- Area to be graded

EROSION CONTROL MEASURE	UNITS	QUANTITY
INSTALL CURB INLET BARRIER	EA.	1

QUANTITIES ARE FOR INFORMATION ONLY!
 CONTRACTOR SHALL VERIFY QUANTITIES PER FINAL BID QUANTITY SHEET.

Baughman

NORTHGATE ADDITION
Mass Grading
 Storm Water Drain #308

Baughman Company, P.A. 315 8th St. Wichita, KS 67211 P 316-262-7271 F 316-262-0149	
ENGINEERING SURVEYING PLANNING LANDSCAPE ARCHITECTURE	
PROJECT NUMBER 468-64234	DESIGN ABO
REVISIONS:	DRAWN RDM
	APPROVED ABO
	DATE 4-4-07
	SCALE NOTED
	SHEET

5 OF 48

Northgate\Mass Grading\MASS_PONDS.dwg