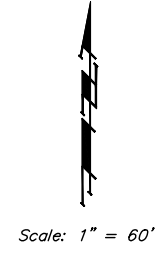
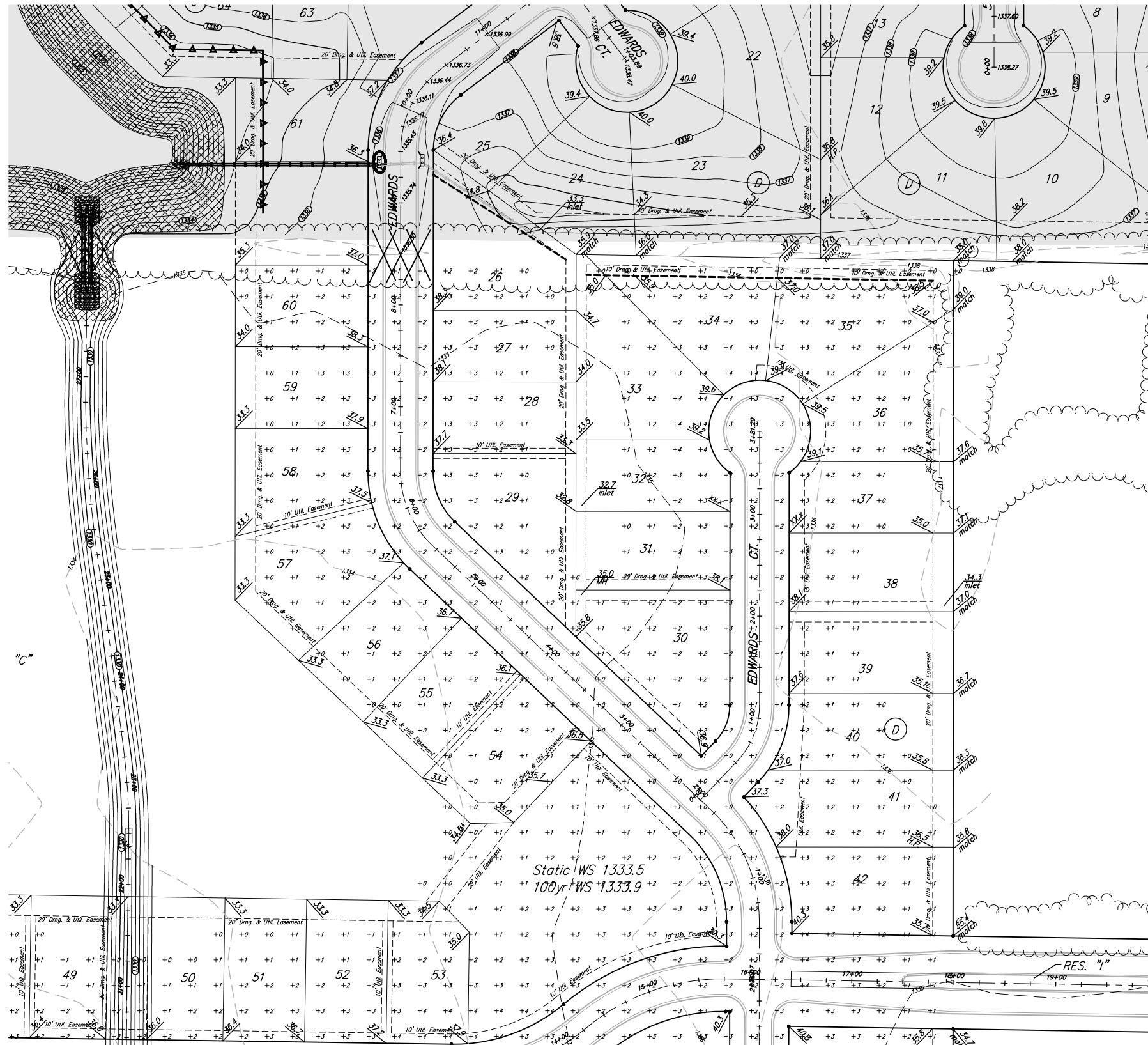



BENCHMARKS:
 BM #1: BENT 604 NAIL IN LIGHT POLE,
 55' SSW. OF THE E1/4 COR., SEC. 13,
 TWP. 26-S, R-1-W.
 ELEV. = 1336.54 NGVD29

BM #2: RAILROAD SPIKE IN E. FACE OF
 N. "H" POLE, 60'± S. OF N. LINE, S1/2,
 NE1/4, SEC. 13, TWP. 26-S, R-1-W
 ELEV. = 1335.93 NGVD29

BM #3: "□" CUT ON TOP OF NE COR.
 OF WATER VAULT, 437'± E. & 54'± N.
 OF S1/4 COR., SEC. 13, TWP. 26-S,
 R-1-W.
 ELEV. = 1334.81 NGVD29



- NOTES:**
1. All Excess material remaining from Pond Excavation and/or Temporary Ditch Construction shall be spread as indicated by the "Fill Ticks" on sheets 6 & 7. Contractor shall begin at the existing tree row and work evenly from North to South, either side of Reserve "C".
 2. Contractor shall strip top 6" of soil within Street R/W's before placing any fill. Compaction of 95% Standard Proctor Density shall be obtained within Street R/W's, 90% in all other areas.
 3. Contractor shall ensure positive drainage for all areas.

	NORTHGATE ADDITION Mass Grading Storm Water Drain #308	
	<small>Baughman Company, P.A. 315 Ellis St. Woburn, MA 02158 P 314-362-7771 F 314-362-0149 ENGINEERING SURVEYING PLANNING LANDSCAPE ARCHITECTURE</small>	
PROJECT NUMBER 468-84254	DESIGN AEG	DRAWN RDM
REVISIONS:	APPROVED AEG	DATE 4-4-07
SCALE NOTED		SHEET 6 OF 48
<small>Northgate\Mass Grading\MASS_PONDS.dwg</small>		