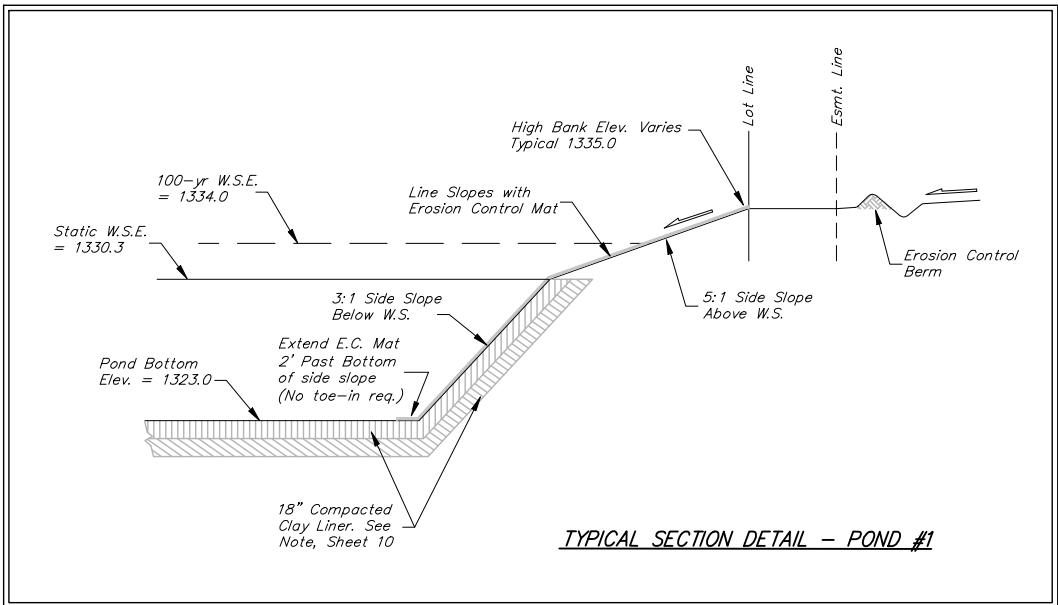
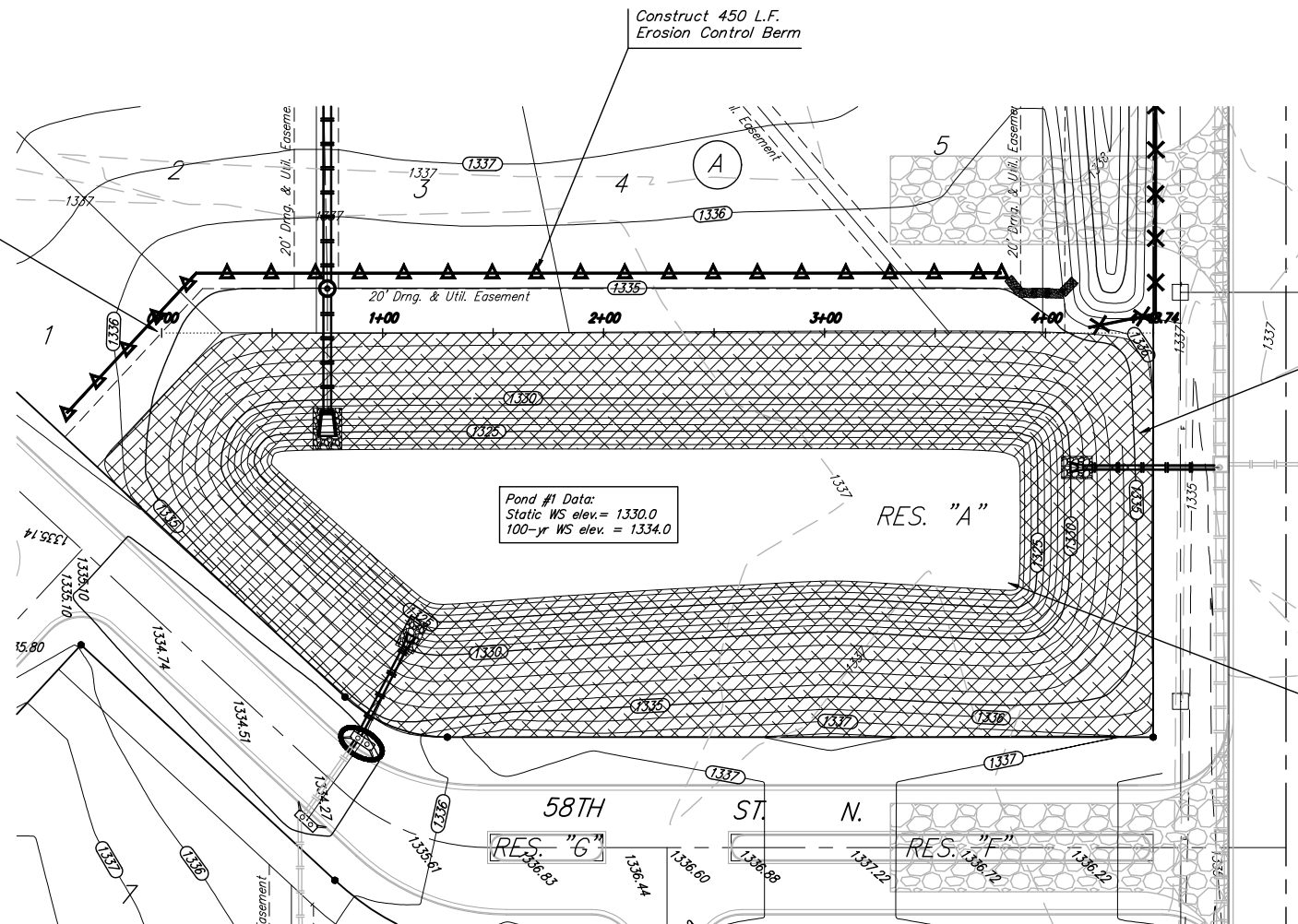


BENCHMARKS:
 BM #1: BENT 60d NAIL IN LIGHT POLE,
 55' SSW. OF THE E1/4 COR., SEC. 13,
 TWP. 26-S, R-1-W.
 ELEV. = 1336.54 NGVD29

BM #2: RAILROAD SPIKE IN E. FACE OF
 N. "H" POLE, 60± S. OF N. LINE, S1/2,
 NE1/4, SEC. 13, TWP. 26-S, R-1-W
 ELEV. = 1335.93 NGVD29

BM #3: "□" CUT ON TOP OF NE COR.
 OF WATER VAULT, 437± E. & 54± N.
 OF S1/4 COR., SEC. 13, TWP. 26-S,
 R-1-W.
 ELEV. = 1334.81 NGVD29

BL Sta 0+00
 = South Line Lots 2-5
 Extended to Esm't Line.



Mass Grading and Erosion Control Plan Legend

- Proposed Storm Sewer
- Proposed Sanitary Sewer
- Proposed Grade
- Existing Grade
- Silt Fence
- Erosion Control Berm
- Straw Bale Ditch Check
- Drop Inlet Sed. Barrier
- Curb Inlet Sed. Barrier
- Remove Trees
- Erosion Control Mat

EROSION CONTROL MEASURE	UNITS	QUANTITY
INSTALL EROSION CONTROL MAT	S.Y.	6,355
INSTALL EROSION CONTROL BERM	L.F.	450

QUANTITIES ARE FOR INFORMATION ONLY!
 CONTRACTOR SHALL VERIFY QUANTITIES PER FINAL BID QUANTITY SHEET.

Baughman NORTHGATE ADDITION
Pond #1
 Storm Water Drain #308

Baughman Company, P.A. 315 8th St. W. Harrisburg, PA 17101 P 717-633-7771 F 717-633-0149
 ENGINEERING | SURVEYING | PLANNING | LANDSCAPE ARCHITECTURE

PROJECT NUMBER 468-84234	DESIGN AEG	DRAWN RDM
REVISIONS:	APPROVED AEG	DATE 4-4-07
	SCALE NOTED	SHEET 8 OF 48

Northgate\Mass Grading\MASS_PONDS.dwg