

LATERAL 7, MAIN 21, FOUR MILE CREEK SEWER SANITARY SEWER EXTENSION to serve Clear Ridge Addition, Phase 1 CITY OF WICHITA, KANSAS

Gary Janzen, P.E. City Engineer
Project Number 468-85237
O.C.A. NO. 744475

Mies Construction - Contractor
K. Yale - City of Wichita, Field Project Engineer
M. Dolechek - Garver, Inspector
As-built
Stubs & Risers
Release Date: 3/14/2019
Completion Date: 4/26/2019
pdf: 3/15/2019 apr

GENERAL NOTES:

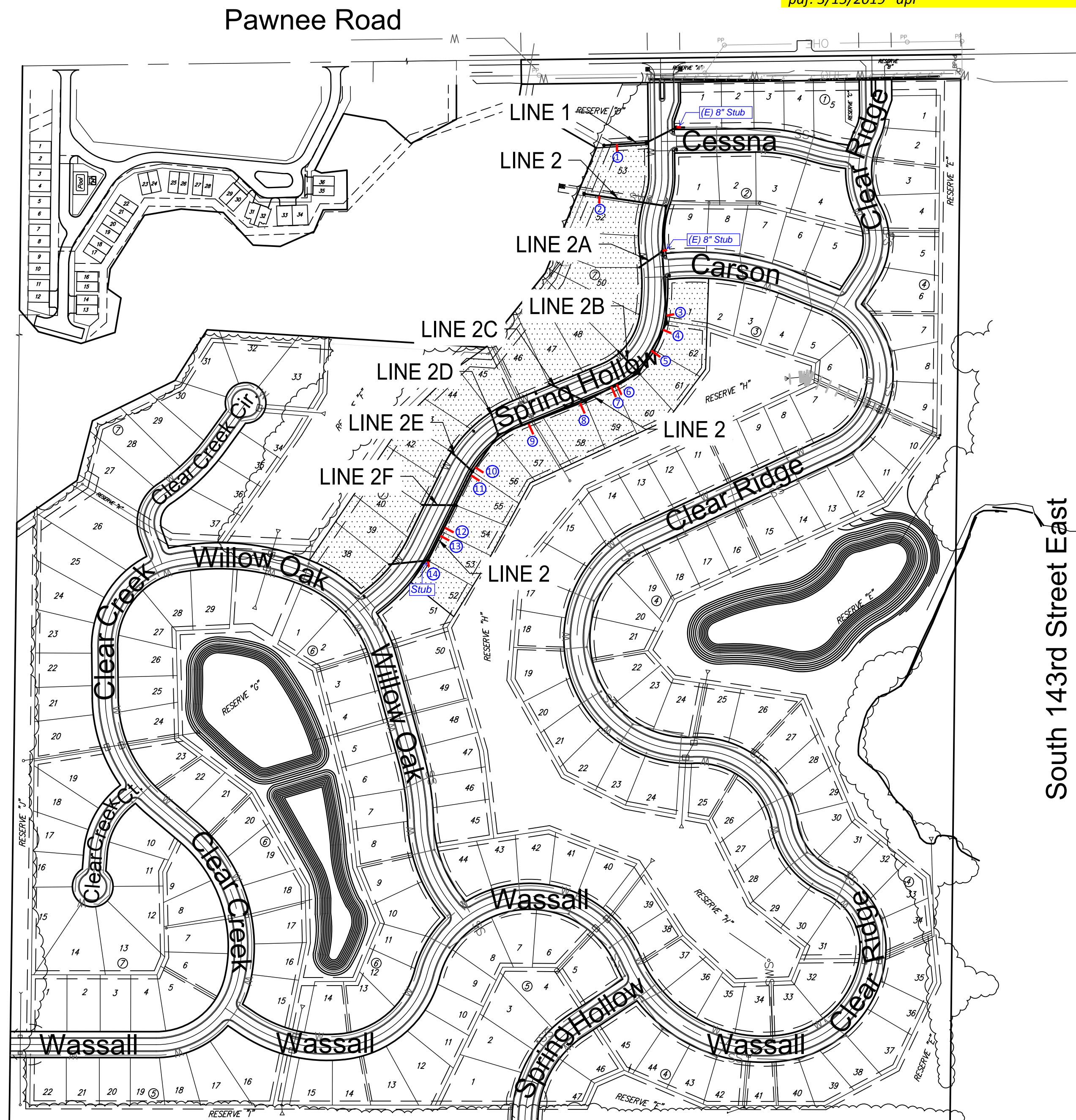
- The Contractor shall comply with all applicable safety regulations. All construction shall be completed following current City Standard Specifications and Special Provisions.
- Contractor will be required to provide notice to utility companies a minimum of seventy-two (72) hours prior to any excavation, as follows:
Kansas One-Call 687-2470
The Contractor must notify the following in case of an emergency:
AT&T 1-800-246-8464
Black Hills Energy 1-800-694-8389
City of Wichita Water & Sewer Dept. 1-316-219-8921
City of Wichita Stormwater 1-316-268-4090
City of Wichita Traffic 1-316-268-4034
Cox Communications 1-888-249-3530
Kansas Gas Service 1-888-482-4850
Westar Energy 1-800-544-4857
- Utility service lines, poles, etc. are to be adjusted as necessary by others prior to construction unless the plans specifically call for their adjustment by the Contractor or unless the plans specifically identify a utility to be adjusted by its owner during construction. Existing utilities and their location, as shown on the plans, represent the best information obtainable for design. The Contractor will be required to work around existing utilities within the right-of-way which do not conflict with proposed construction.
- Rubble from the removal of miscellaneous structures and excess excavation which is to be wasted shall be disposed of on sites to be provided by the Contractor. These sites shall be approved by the Engineer as to suitability, appearance and site location. Locations, in the opinion of the Engineer, that will leave an unsightly appearance will not be approved. All disposal sites must be approved by the Kansas Department of Health and Environment. Material either stockpiled or disposed of in a flood plain will require a Kansas State Board of Agriculture permit. Any material dumped in waters of the United States or wetlands is subject to U.S. Corps of Engineers permitting regulations. Any material buried or stockpiled beyond approved construction limits will require additional archaeological investigations unless buried in a previously approved borrow location.
- Trees and shrubs in public right-of-way which are in direct conflict with proposed new construction shall be removed by the Contractor with the Engineer's approval. Trees and shrubs which are not in direct conflict with proposed new construction shall be saved and protected from damage.
- The Contractor shall give all property owners and/or tenants of developed property abutting the construction of this project a minimum of ten (10) days notice prior to start of construction.
- The Contractor shall be responsible for preserving property irons. The Contractor will be required to re-establish any property irons which are damaged or destroyed by his construction operations. Such irons shall be re-established by a licensed land surveyor in accordance with state laws.
- If traffic will be impacted by construction, a traffic control plan must be submitted and approved by the City Traffic Engineer, Brian Coon at traffic@wichita.gov before construction can begin. The Contractor shall be responsible for all traffic control measures to facilitate construction. All construction zone markings and signage shall conform to the latest version of the Manual on Uniform Traffic Control Devices (MUTCD) as published by the US Dept. of Transportation, Federal Highway Administration. All costs associated with construction markings and signage shall be the Contractors responsibility.
- All elevations shown are NAVD 88, G12A.
- All areas disturbed during construction that will not be under proposed pavement shall be restored to match existing conditions.
- The Contractor shall protect from damage and support existing utilities through constructions as approved by the utility owner and the Engineer at the contractors expense.
- Contractor shall limit the extent of trench openings overnight and weekends to less than 50 feet.
- Any sidewalk, drive approach, curb, or street pavement removed to construct project must have a pavement cut permit and be replaced by the City contractor. Permits can be obtained by calling 316-268-4501 or 316-268-4480.
- All stubs and plugged pipes shall be located with green plastic tape in the same manner as risers.
- Connecting to Existing Manholes:
Prior to laying sewer lines using existing stubs in existing manholes, the Contractor shall expose and verify the elevation, grade and alignment of existing stubs and notify the Engineer of any deviation from the plans. Where connection to an existing manhole that does not have an existing stub or the stub is unusable due to elevation grade or alignment, the Contractor shall bore cut into existing manhole wall to make connection using approved water stop gasket, and reshape the existing manhole invert to provide smooth flow. The cost to connecting to existing manholes is incidental to the project.
- Contractor shall provide positive drainage away from all manhole covers.
- The Contractor shall prevent any construction debris from entering the existing sanitary sewer during construction.
- The Contractor shall be responsible for maintaining continuous flow of sewage through construction. Contractors proposed method for maintaining sewage flow shall be submitted and approved by the Sewer Maintenance Division (316-268-4073) prior to starting and by-passing of sewage flows.
- Any over excavation from manhole and pipe removal shall be backfilled with AB-3 compacted to 90-95% ASTM D698.
- No shrink or swell factors have been applied to the earthwork quantities shown on this project. All earthwork quantities are based on raw surface volume comparisons.
- Excess dirt generated from installation of underground sanitary sewer due to flowable fill and sand backfill is to remain on site and placed across Lots 39-51, Block 7. Dirt shall be placed outside of road right-of-way, up to the elevations shown for cleanout riser assemblies for Lines 2A-2F and the cleanout riser assembly at the end of line 2. Dirt shall not be placed more than 18" deep at the building setback line (25' behind the right-of-way). 18" of dirt may be placed for up to 40' behind the setback line and then tapered back down to match existing grade. Contractor shall ensure placement of dirt does not result in ponding of water prior to mass grading and roadway construction. Placement of dirt shall be subsidiary to Sand Backfill, Jet, & Vibrate bid item.

DEVELOPER INFORMATION:
CLEAR RIDGE INVESTMENTS LLC
STEVE MILLER, 316-259-2377

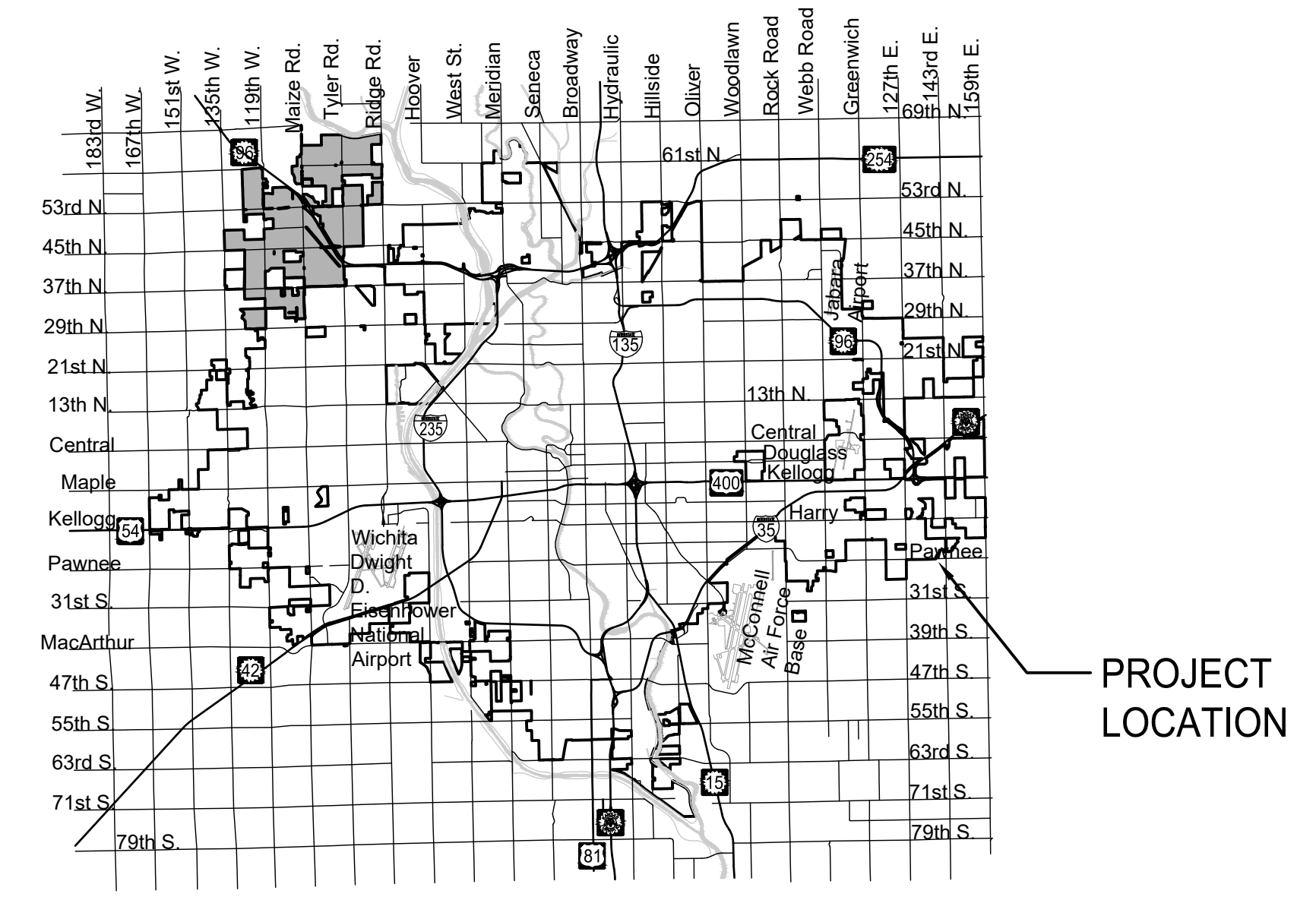
Benchmarks

BENCHMARK: CHISELED SQUARE ON THE TOP OF CURB ON THE SOUTH END OF THE MEDIAN OF IRONSTONE, 55' N. OF THE CENTERLINE OF PAWNEE, SIERRA HILLS 2ND ADDITION, ELEVATION = 1320.03 (NAVD88, G12A)

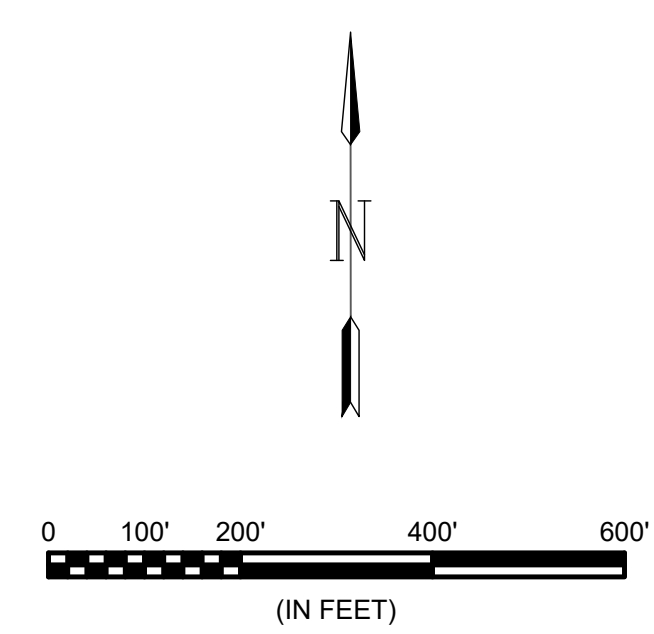
ON-SITE BENCHMARK: SRB BRASS DISC 340' W. & 50' S. OF THE CENTERLINE INTERSECTION PAWNEE AVENUE & 143RD STREET EAST, ELEVATION = 1315.65 (NAVD88, G12A)



IMPROVEMENT DISTRICT



Vicinity Map



Sheet Index	
Sheet	Title
1	Titlesheet
2	Pre-Cast SS MH
3	MH Frame & Cover
4	Vertical Riser
5	Cleanout Riser
6	Sanitary Sewer 1
7	Sanitary Sewer 2
8	Sanitary Sewer 2
9	Sanitary Sewer 2A-C
10	Sanitary Sewer 2D-F
11	Erosion Control Plan
12	Bubble Map
13	BOC
14	Silt Fc
15	Straw Bale
16	SIP
17	SDP
18	Sanitary Plat
19	Sanitary Plat

RECORD DRAWINGS
Contractor: Mies Construction
Inspector: Mark Dolechek/Patrick Herman
GARVER
PDF By: DGZ/PMH 11/06/18



Digitally Signed 07/16/2018



July 2018

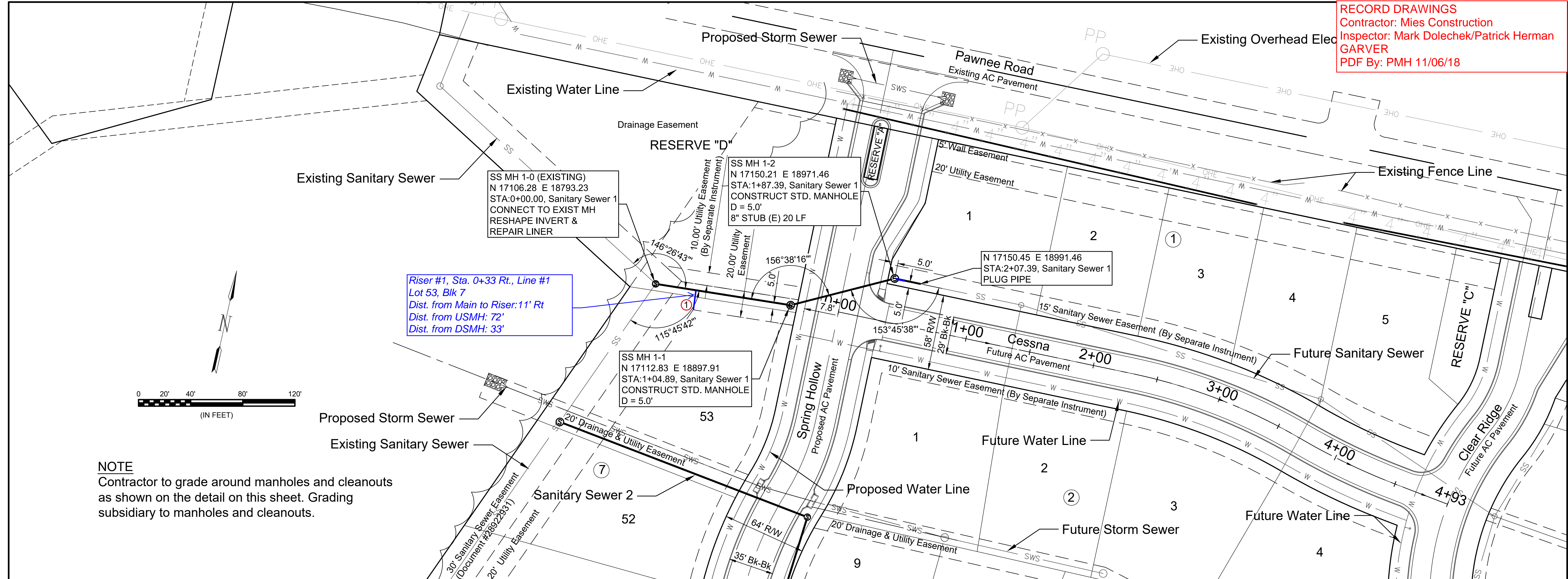
PLANS PREPARED BY



© 2017 GARVER, LLC
 THIS DOCUMENT, ALONG WITH THE IDEAS AND DESIGNS CONVEYED HEREIN, SHALL BE CONSIDERED INSTRUMENTS OF PROFESSIONAL SERVICE AND ARE PROPERTY OF GARVER, LLC. ANY USE, REPRODUCTION, OR DISTRIBUTION OF THIS DOCUMENT, ALONG WITH THE IDEAS AND DESIGNS CONTAINED HEREIN, IS PROHIBITED UNLESS AUTHORIZED IN WRITING BY GARVER, LLC OR EXPLICITLY ALLOWED IN THE GOVERNING PROFESSIONAL SERVICES AGREEMENT FOR THIS WORK.

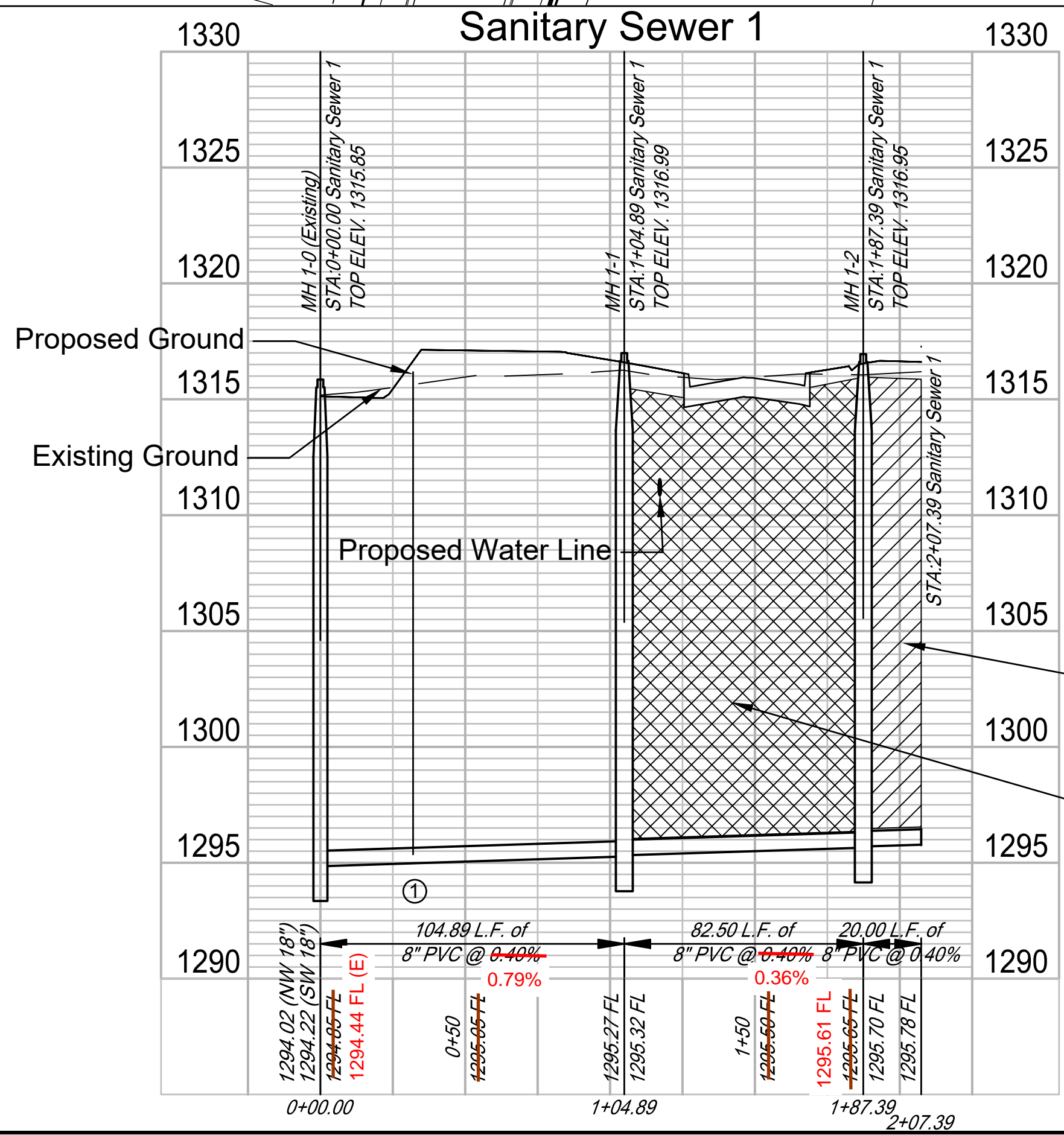
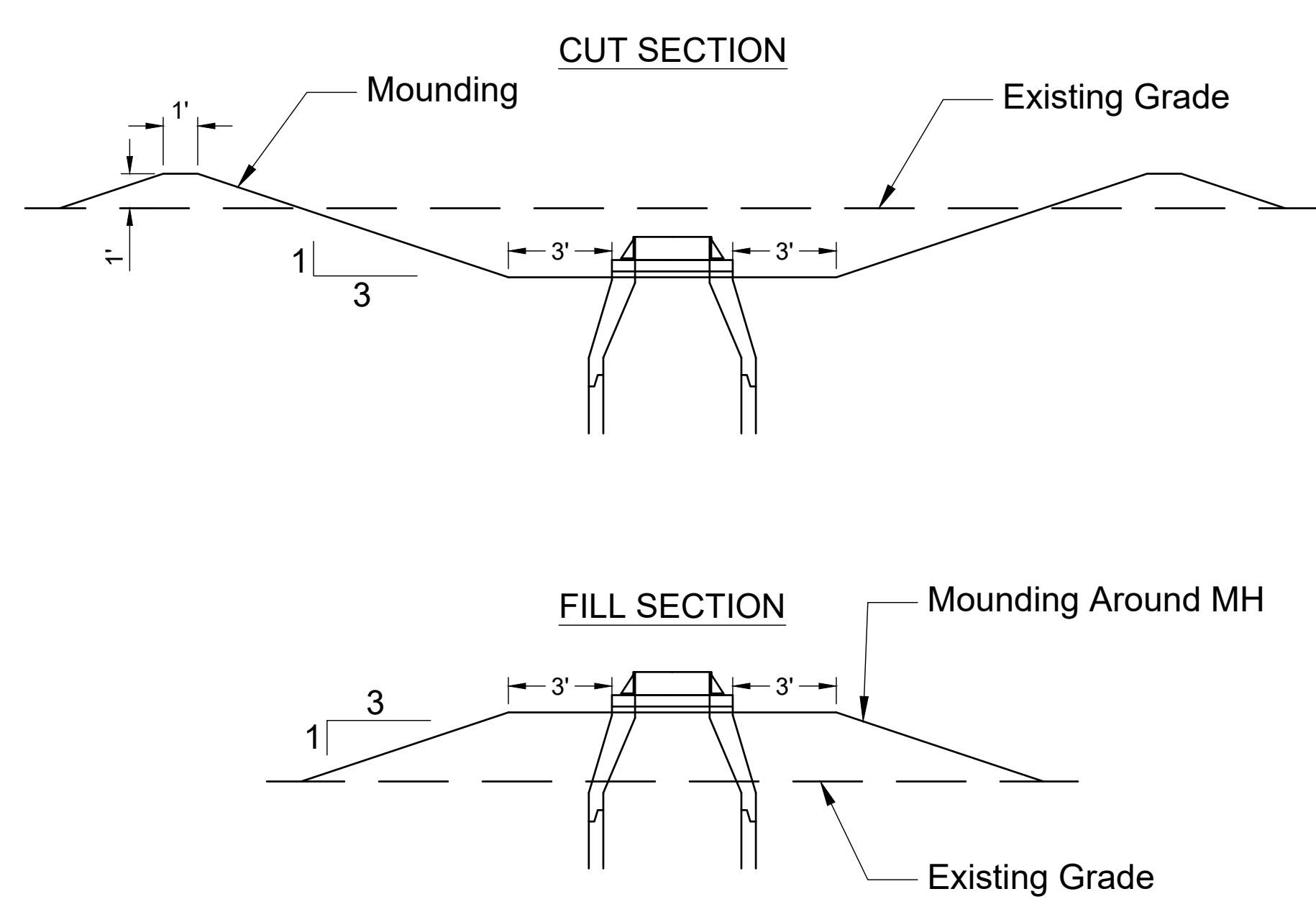


Digitally Signed 07/16/2018



REV.	DATE	DESCRIPTION	BY

MANHOLE BACKFILL/GRADING DETAILS



NO.	TYPE	SERVING			FOR INFORMATION ONLY	
		LOT NO.	BLOCK NO.	LINE NO.	STATION/DIRECTION	APPROX. LENGTH 4" PIPE
1	8"x4" Tee	53	7	1	0+32 Right 0+33 Rt.	VERTICAL: 20.0' HORIZONTAL: 15.0'

SAND BACKFILL, JET, & VIBRATE 17 L.F. STA. 1+90 - STA. 2+07

FLOWABLE FILL BACKFILL 78 L.F. STA. 1+07 - STA. 1+85

File: L:\2017\17264889 - Clear Ridge Phase 1\Drawings\C3D\Sanitary06 - Sanitary Sewer 1.dwg Last Save: 7/16/2018 3:42 PM Last saved by: MTDolechek
 Last plotted by: Dolechek, Mark T. Plot Style: --- Plot Scale: 1:2.565 Plot Date: 7/16/2018 3:45 PM Plotter used: None

CITY OF WICHITA
 WICHITA, KS
 CLEAR RIDGE ADDITION,
 PHASE 1

Sanitary Sewer 1

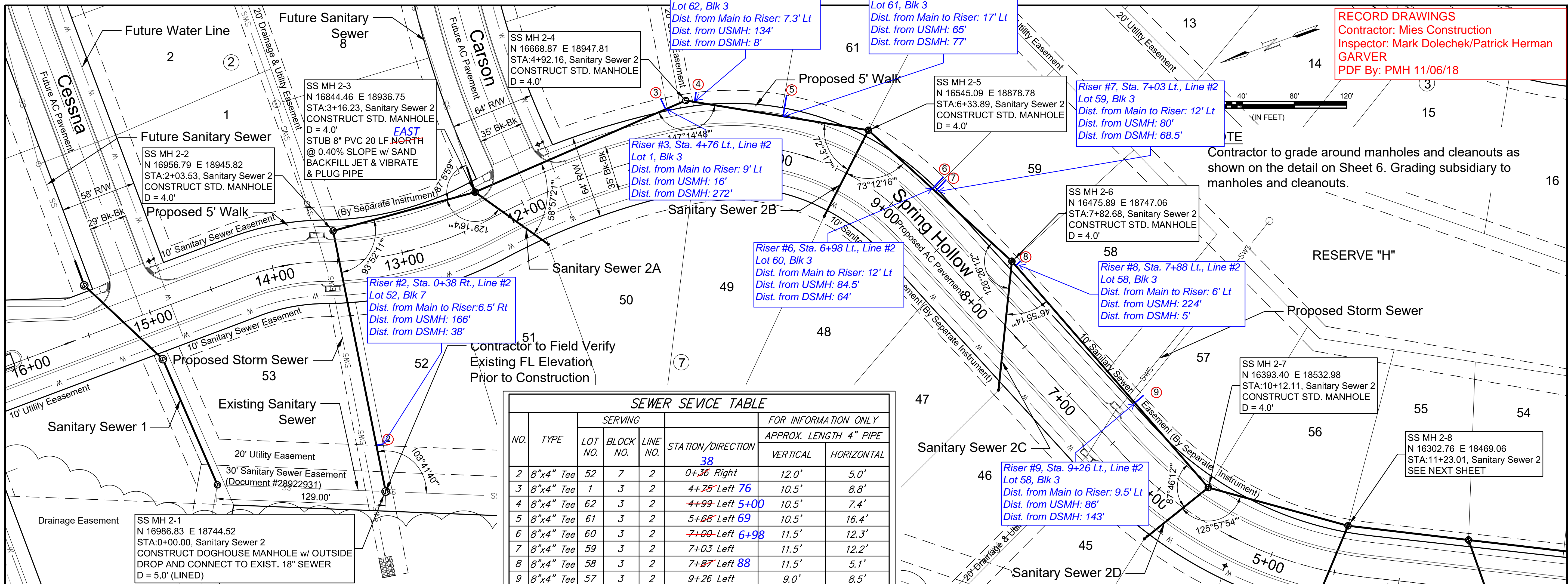
JOB NO.: 17264889
 DATE: JULY 2018
 DESIGNED BY: MTD
 DRAWN BY: MTD/CDJ

BAR IS ONE INCH ON ORIGINAL DRAWING
 IF NOT ONE INCH ON THIS SHEET, ADJUST SCALES ACCORDINGLY.

DRAWING NUMBER
17264889

SHEET NUMBER **6** OF **19**

File: L:\2017\17264889 - Clear Ridge Phase 1\Drawings\C3D\Sanitary07 - Sanitary Sewer 2 - 1.dwg Last Save: 6/20/2018 1:59 PM Last saved by: MTDolechek
 Last plotted by: Dolechek, Mark T. Plot Date: 7/16/2018 3:45 PM Plotter used: None



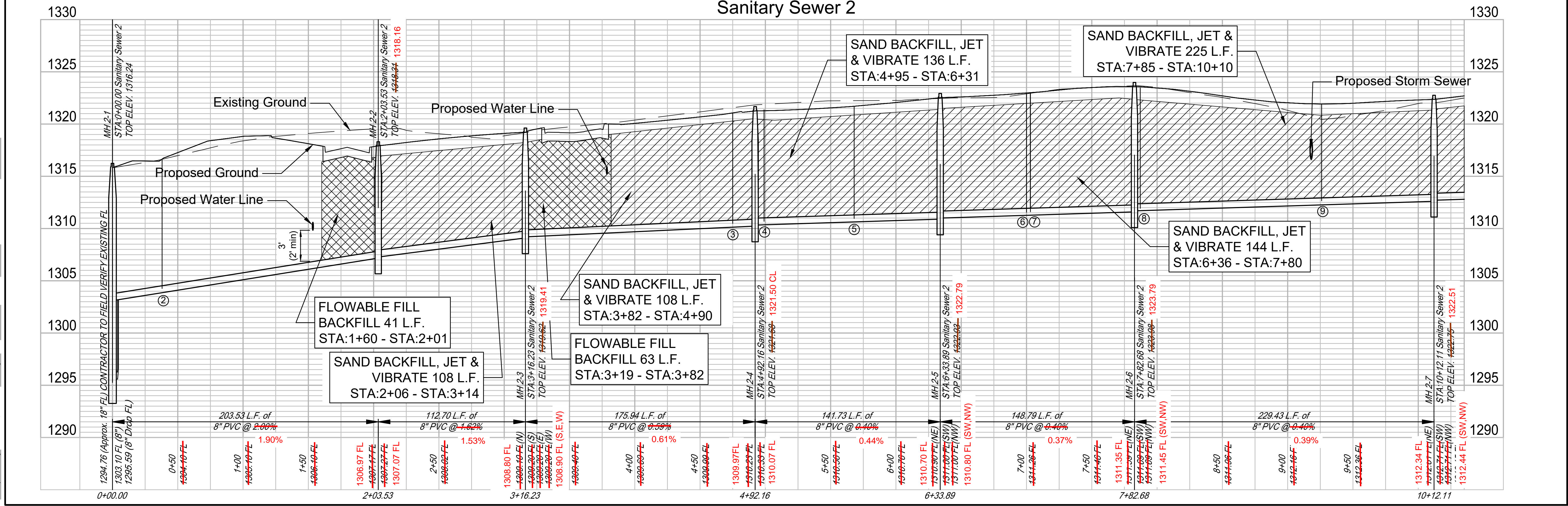
RECORD DRAWINGS
 Contractor: Mies Construction
 Inspector: Mark Dolechek/Patrick Herman
 GARVER
 PDF By: PMH 11/06/18



Digitally Signed 07/16/2018

SEWER SERVICE TABLE							
NO.	TYPE	SERVING			FOR INFORMATION ONLY		
		LOT NO.	BLOCK NO.	LINE NO.	STATION/DIRECTION	APPROX. LENGTH 4" PIPE	
					VERTICAL	HORIZONTAL	
2	8"x4" Tee	52	7	2	0+36 Right	12.0'	5.0'
3	8"x4" Tee	1	3	2	4+75 Left 76	10.5'	8.8'
4	8"x4" Tee	62	3	2	4+99 Left 5+00	10.5'	7.4'
5	8"x4" Tee	61	3	2	5+68 Left 6+99	10.5'	16.4'
6	8"x4" Tee	60	3	2	7+00 Left 6+98	11.5'	12.3'
7	8"x4" Tee	59	3	2	7+03 Left	11.5'	12.2'
8	8"x4" Tee	58	3	2	7+87 Left 88	11.5'	5.1'
9	8"x4" Tee	57	3	2	9+26 Left	9.0'	8.5'

Sanitary Sewer 2



REV.	DATE	DESCRIPTION

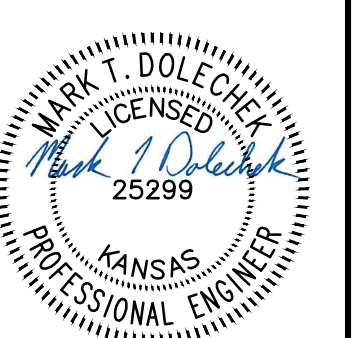
CITY OF WICHITA
 WICHITA, KS
 CLEAR RIDGE ADDITION,
 PHASE 1

Sanitary Sewer 2
 JOB NO.: 17264889
 DATE: JULY 2018
 DESIGNED BY: MTD
 DRAWN BY: MTD/CDJ
 BAR IS ONE INCH ON ORIGINAL DRAWING
 IF NOT ONE INCH ON THIS SHEET, ADJUST SCALES ACCORDINGLY.
 DRAWING NUMBER
17264889
 SHEET NUMBER **7** OF **19**

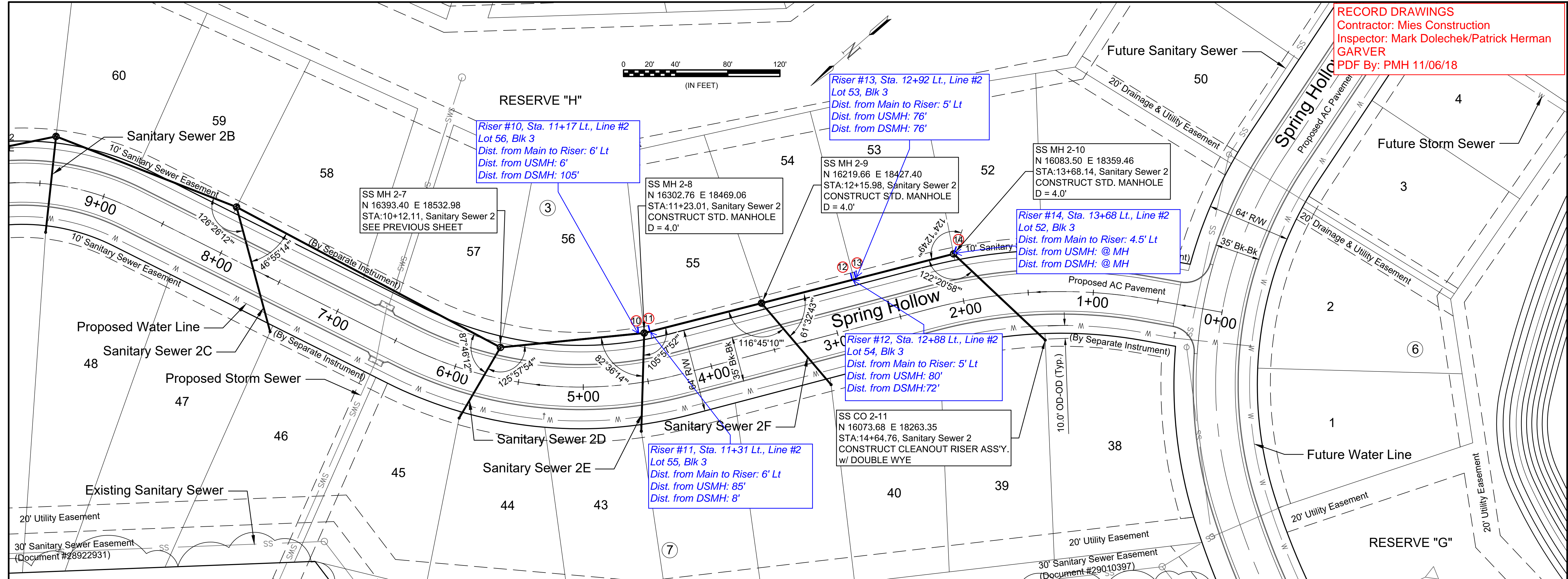
RECORD DRAWINGS
 Contractor: Mies Construction
 Inspector: Mark Dolechek/Patrick Herman
 GARVER
 PDF By: PMH 11/06/18



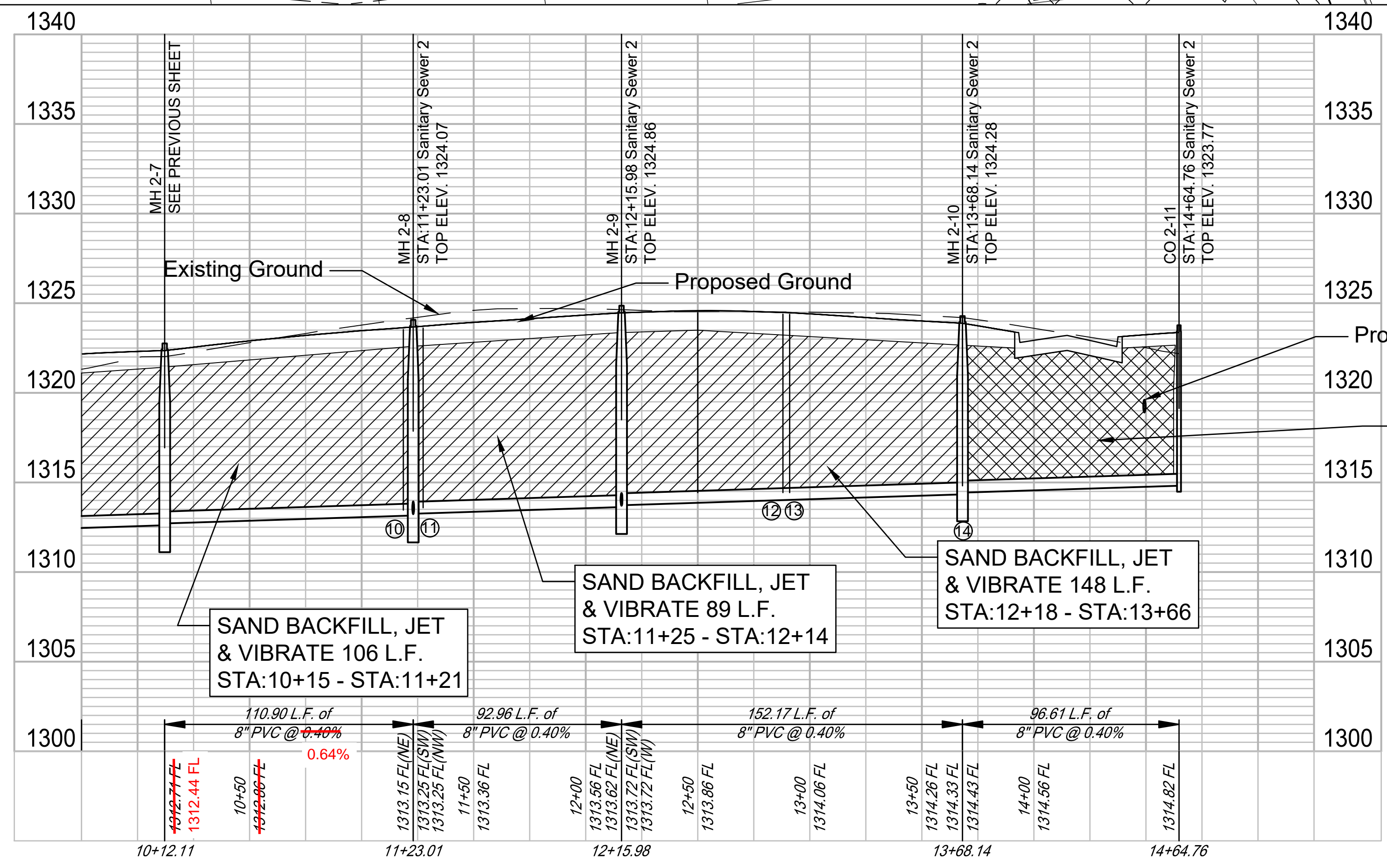
© 2017 GARVER, LLC
 THIS DOCUMENT, ALONG WITH THE IDEAS AND DESIGNS CONVEYED HEREIN, SHALL BE CONSIDERED INSTRUMENTS OF PROFESSIONAL SERVICE AND ARE PROPERTY OF GARVER, LLC. ANY USE, REPRODUCTION, OR DISTRIBUTION OF THIS DOCUMENT, ALONG WITH THE IDEAS AND DESIGNS CONTAINED HEREIN, IS PROHIBITED UNLESS AUTHORIZED IN WRITING BY GARVER, LLC OR EXPLICITLY ALLOWED IN THE GOVERNING PROFESSIONAL SERVICES AGREEMENT FOR THIS WORK.



Digitally Signed 07/16/2018



SEWER SERVICE TABLE							
NO.	TYPE	SERVING			FOR INFORMATION ONLY		
		LOT NO.	BLOCK NO.	LINE NO.	STATION/DIRECTION	APPROX. LENGTH 4" PIPE	
					VERTICAL	HORIZONTAL	
10	8"x4" Tee	56	3	2	11+19 Left	10.0'	4.7'
11	8"x4" Tee	55	3	2	11+27 Left	10.0'	4.8'
12	8"x4" Tee	54	3	2	12+88 Left	9.5'	5.4'
13	8"x4" Tee	53	3	2	12+91 Left	9.5'	5.3'
14	MH Stub	52	3	2	13+68 Left	9.0'	5.8'



NOTE
 Contractor to grade around manholes and cleanouts as shown on the detail on Sheet 6. Grading subsidiary to manholes and cleanouts.

FLOWABLE FILL BACKFILL 91 L.F.
 STA:13+71 - STA:14+62

SAND BACKFILL, JET & VIBRATE 106 L.F.
 STA:10+15 - STA:11+21

SAND BACKFILL, JET & VIBRATE 89 L.F.
 STA:11+25 - STA:12+14

SAND BACKFILL, JET & VIBRATE 148 L.F.
 STA:12+18 - STA:13+66

REV.	DATE	DESCRIPTION

CITY OF WICHITA
 WICHITA, KS
 CLEAR RIDGE ADDITION,
 PHASE 1

Sanitary Sewer 2

JOB NO.: 17264889
 DATE: JULY 2018
 DESIGNED BY: MTD
 DRAWN BY: MTD/CDJ

BAR IS ONE INCH ON ORIGINAL DRAWING
 IF NOT ONE INCH ON THIS SHEET, ADJUST SCALES ACCORDINGLY.
 DRAWING NUMBER
17264889
 SHEET NUMBER **8** OF **19**

File: L:\2017\17264889 - Clear Ridge Phase 1\Drawings\C3D\Sanitary08 - Sanitary Sewer 2 - 2.dwg Last Save: 6/20/2018 2:00 PM Last saved by: MTDolechek
 Last plotted by: Dolechek, Mark T. Plot Date: 7/16/2018 3:46 PM Plotter used: None

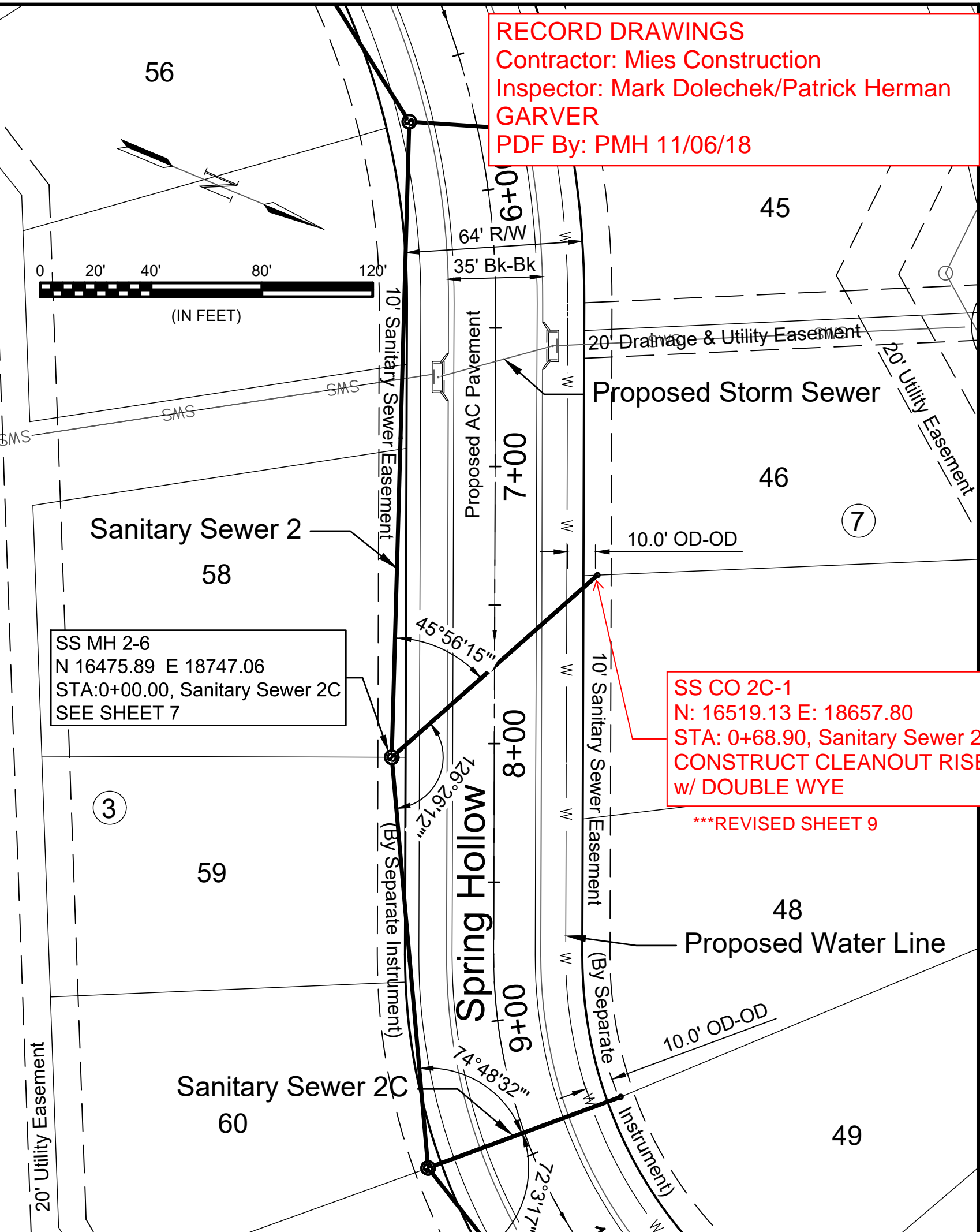
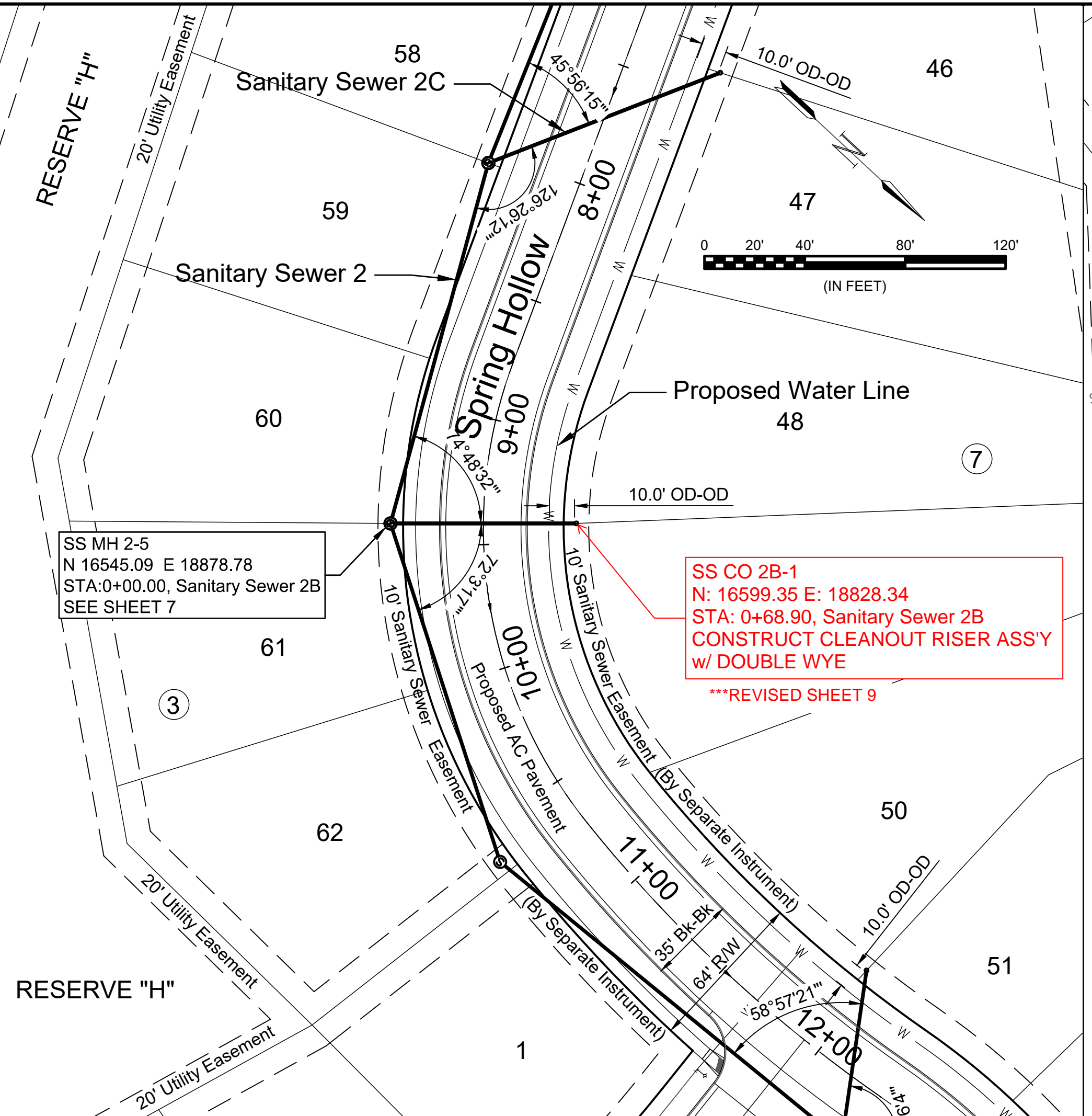
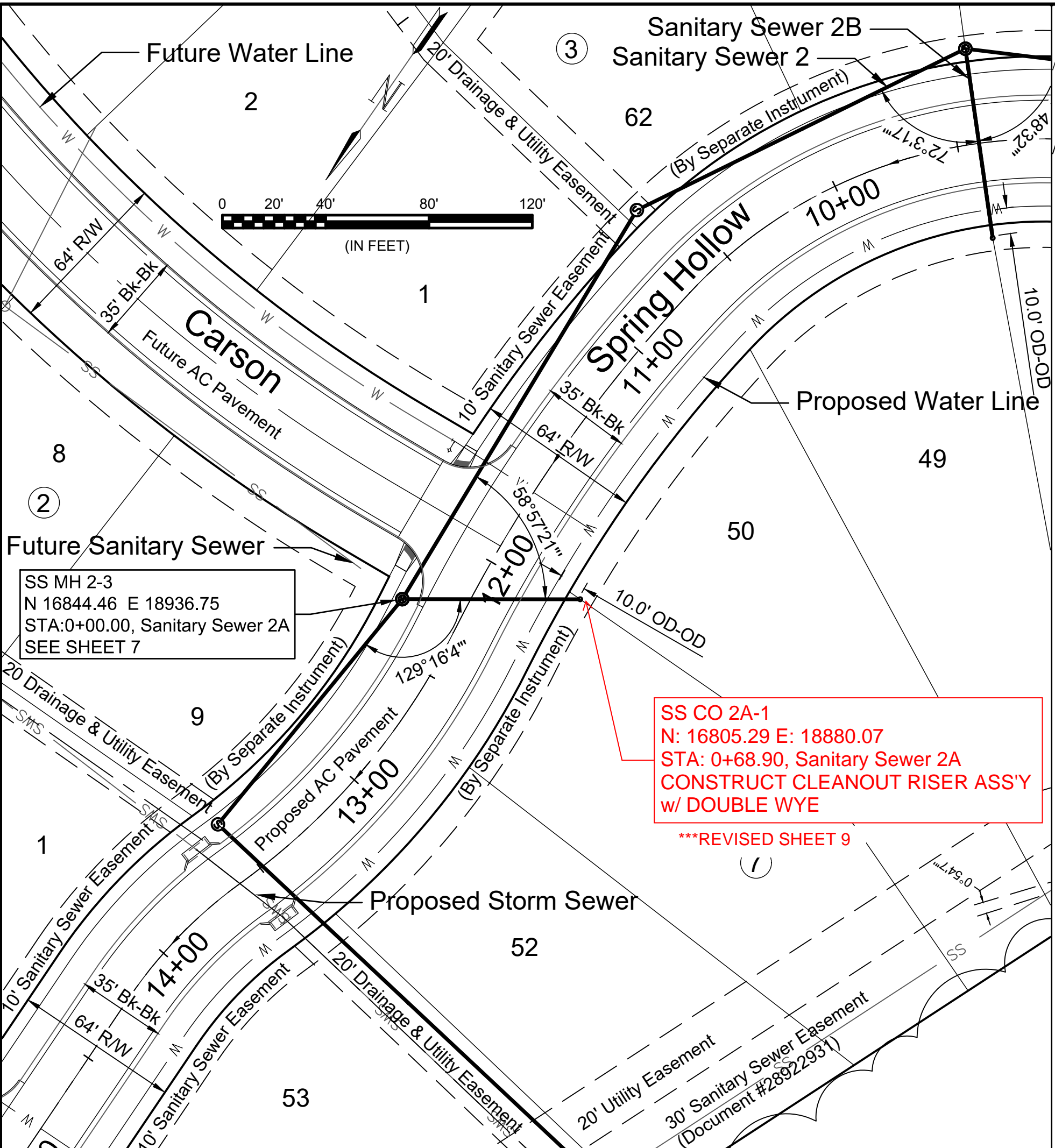
RECORD DRAWINGS
 Contractor: Mies Construction
 Inspector: Mark Dolechek/Patrick Herman
 GARVER
 PDF By: PMH 11/06/18



© 2017 GARVER, LLC
 THIS DOCUMENT, ALONG WITH THE IDEAS AND DESIGNS CONVEYED HEREIN, SHALL BE CONSIDERED INSTRUMENTS OF PROFESSIONAL SERVICE AND ARE PROPERTY OF GARVER, LLC. ANY USE, REPRODUCTION, OR DISTRIBUTION OF THIS DOCUMENT, ALONG WITH THE IDEAS AND DESIGN CONTAINED HEREIN, IS PROHIBITED UNLESS AUTHORIZED IN WRITING BY GARVER, LLC OR EXPLICITLY ALLOWED IN THE GOVERNING PROFESSIONAL SERVICES AGREEMENT FOR THIS WORK.



Digitally Signed 07/16/2018

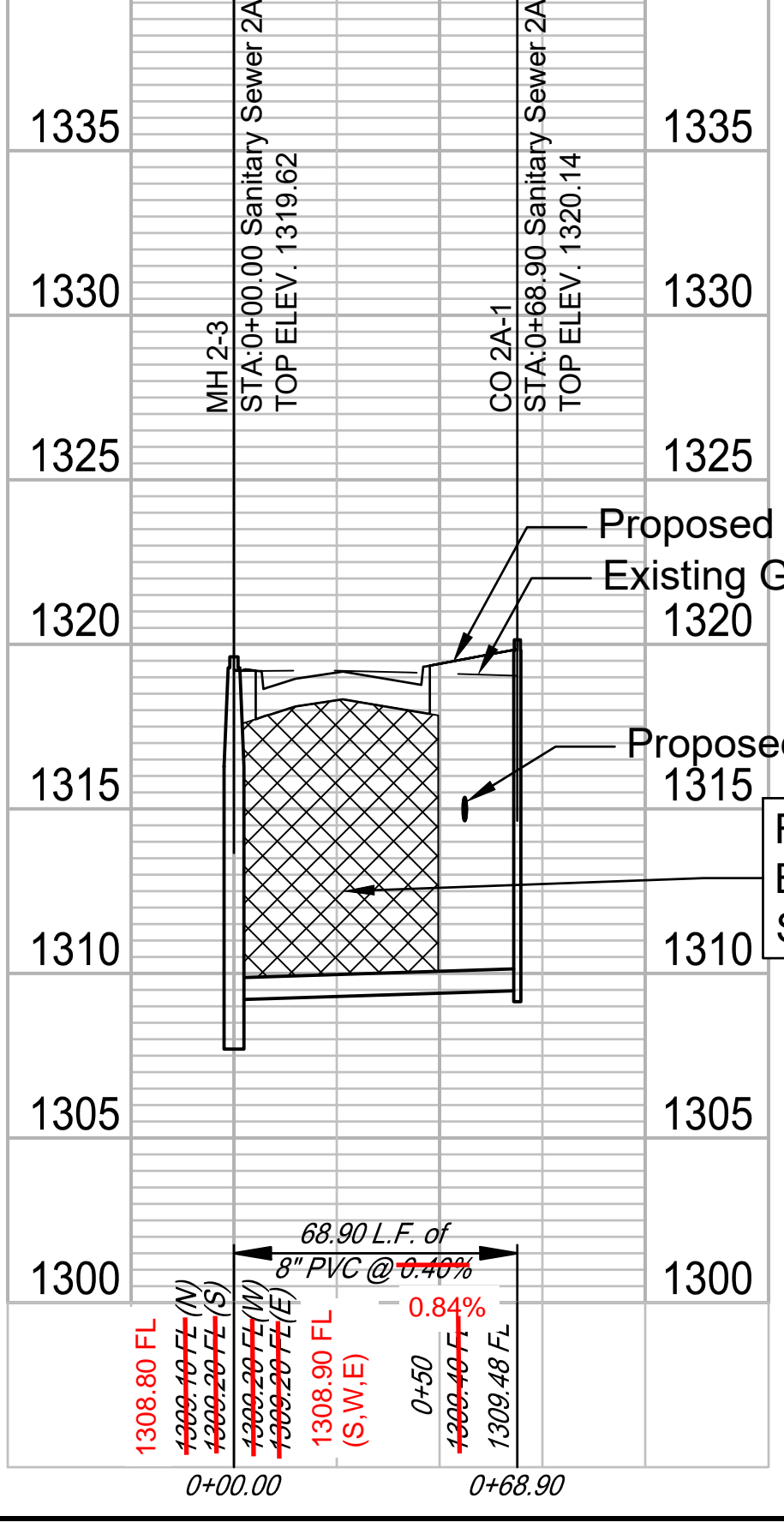


SS CO 2A-1
 N: 16805.29 E: 18880.07
 STA: 0+68.90, Sanitary Sewer 2A
 CONSTRUCT CLEANOUT RISER ASS'Y
 w/ DOUBLE WYE
 ***REVISED SHEET 9

SS CO 2B-1
 N: 16599.35 E: 18828.34
 STA: 0+68.90, Sanitary Sewer 2B
 CONSTRUCT CLEANOUT RISER ASS'Y
 w/ DOUBLE WYE
 ***REVISED SHEET 9

SS CO 2C-1
 N: 16519.13 E: 18657.80
 STA: 0+68.90, Sanitary Sewer 2C
 CONSTRUCT CLEANOUT RISER ASS'Y
 w/ DOUBLE WYE
 ***REVISED SHEET 9

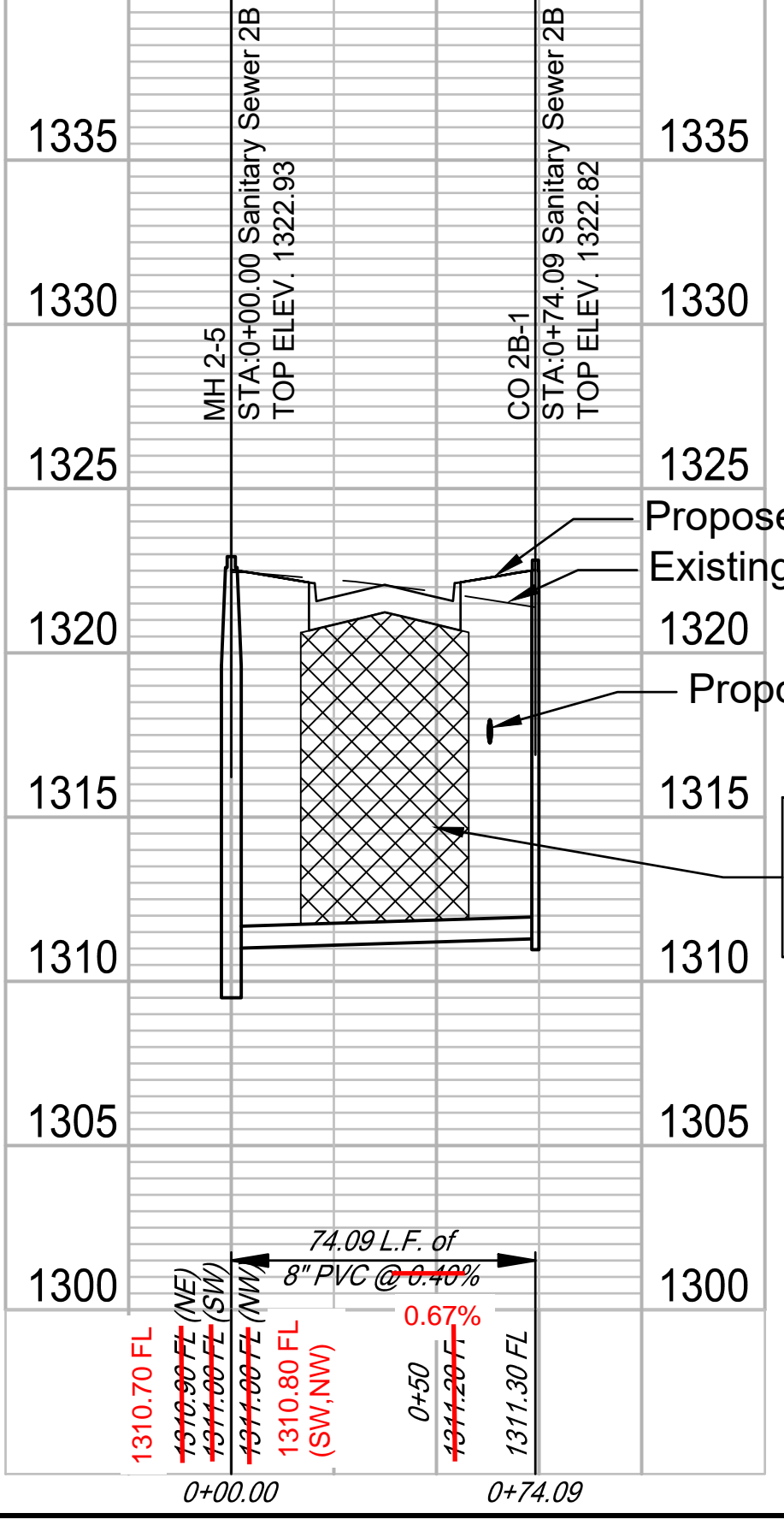
1340 Sanitary Sewer 2A 1340



NOTE
 Contractor to grade around manholes and cleanouts as shown on the detail on Sheet 6.
 Grading subsidiary to manholes and cleanouts.

FLOWABLE FILL
 BACKFILL 47 L.F.
 STA. 0+03 TO STA. 0+50

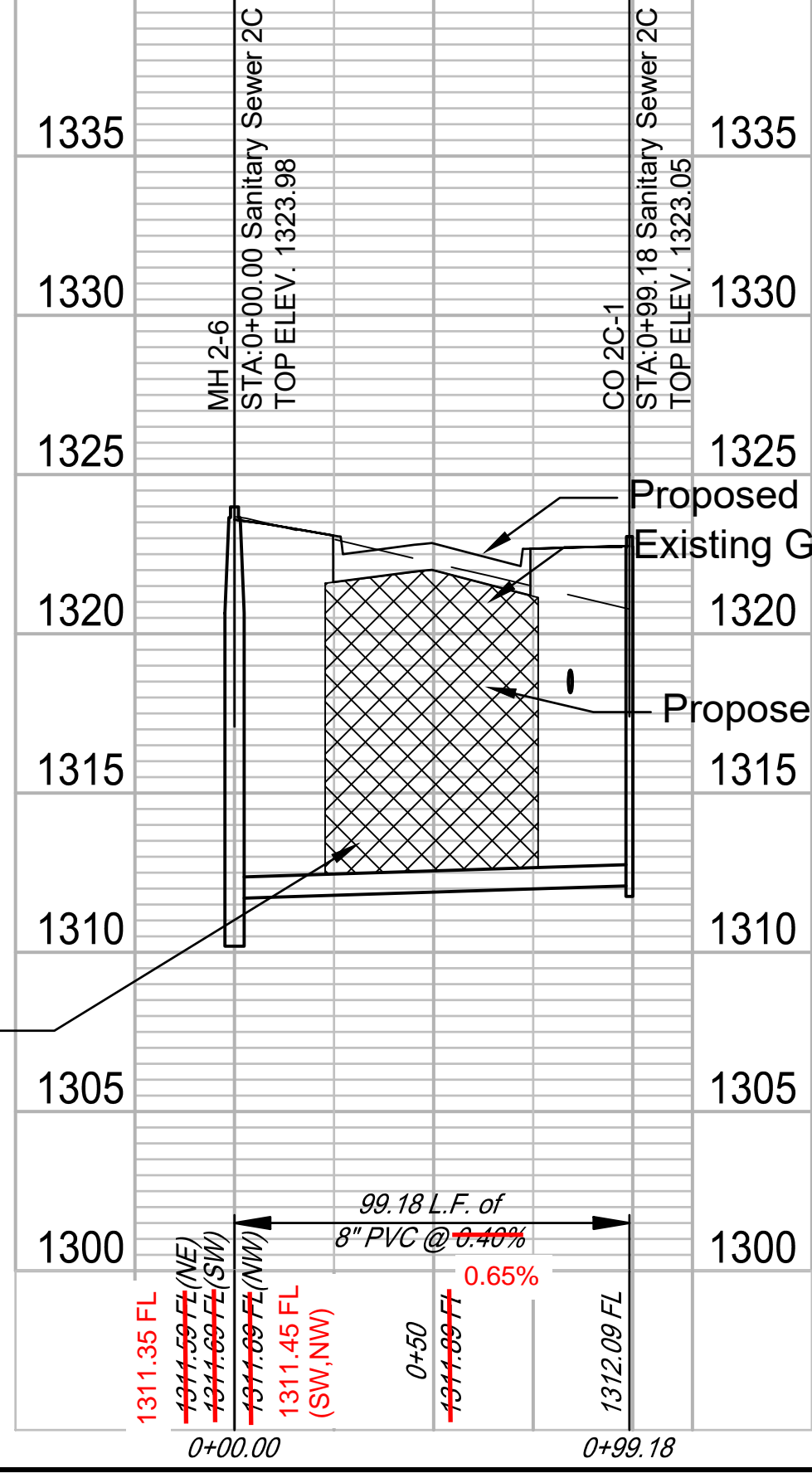
1340 Sanitary Sewer 2B 1340



FLOWABLE FILL
 BACKFILL 41 L.F.
 STA. 0+17 TO STA. 0+58

FLOWABLE FILL
 BACKFILL 54 L.F.
 STA. 0+22 TO 0+76

1340 Sanitary Sewer 2C 1340



REV.	DATE	DESCRIPTION	BY

CITY OF WICHITA
 WICHITA, KS
 CLEAR RIDGE ADDITION,
 PHASE 1

Sanitary Sewer
 2A-C

JOB NO.: 17264889
 DATE: JULY 2018
 DESIGNED BY: MTD
 DRAWN BY: MTD/CDJ

BAR IS ONE INCH ON ORIGINAL DRAWING
 IF NOT ONE INCH ON THIS SHEET,
 ADJUST SCALES ACCORDINGLY.
 DRAWING NUMBER
17264889
 SHEET NUMBER **9** OF **19**

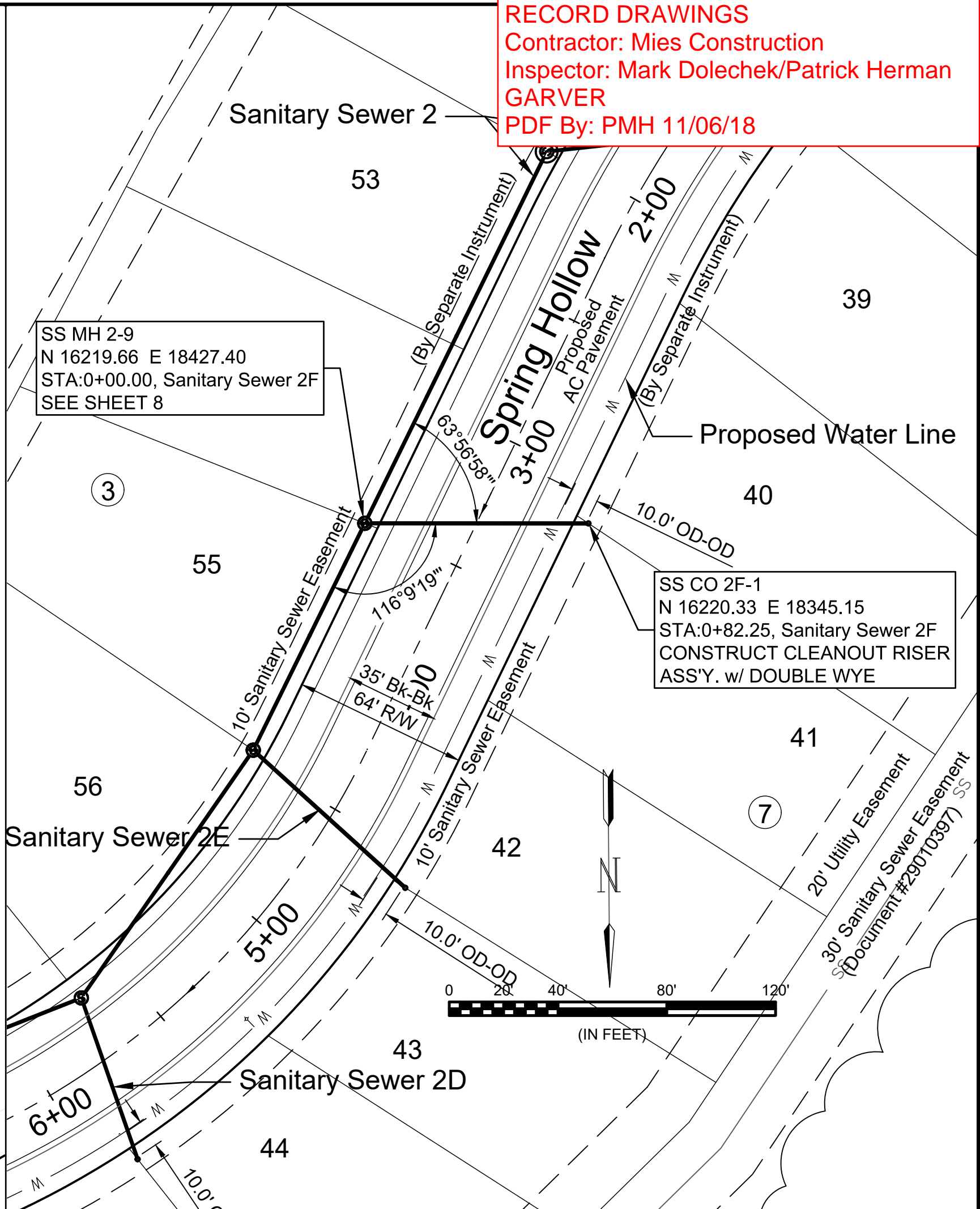
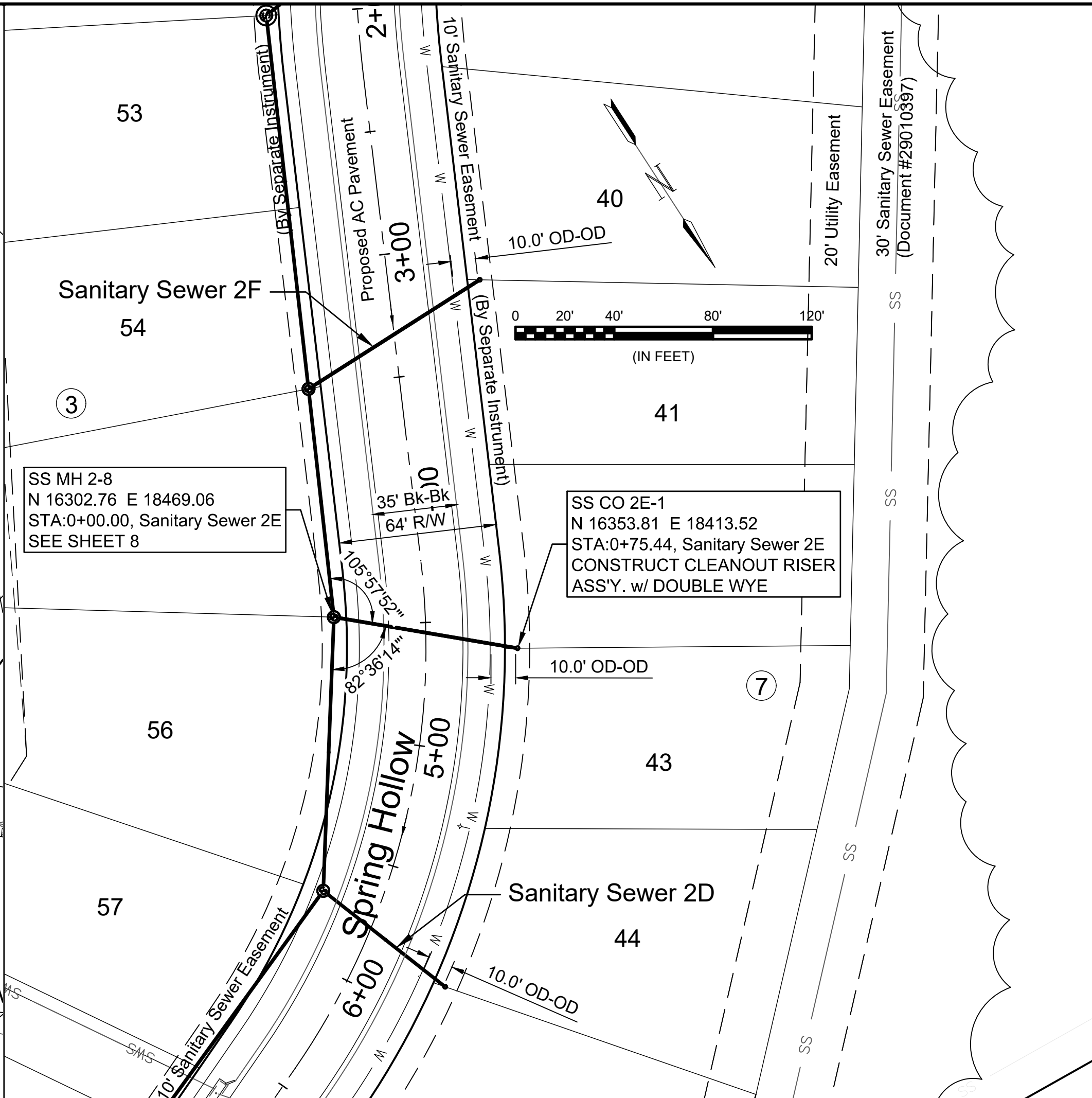
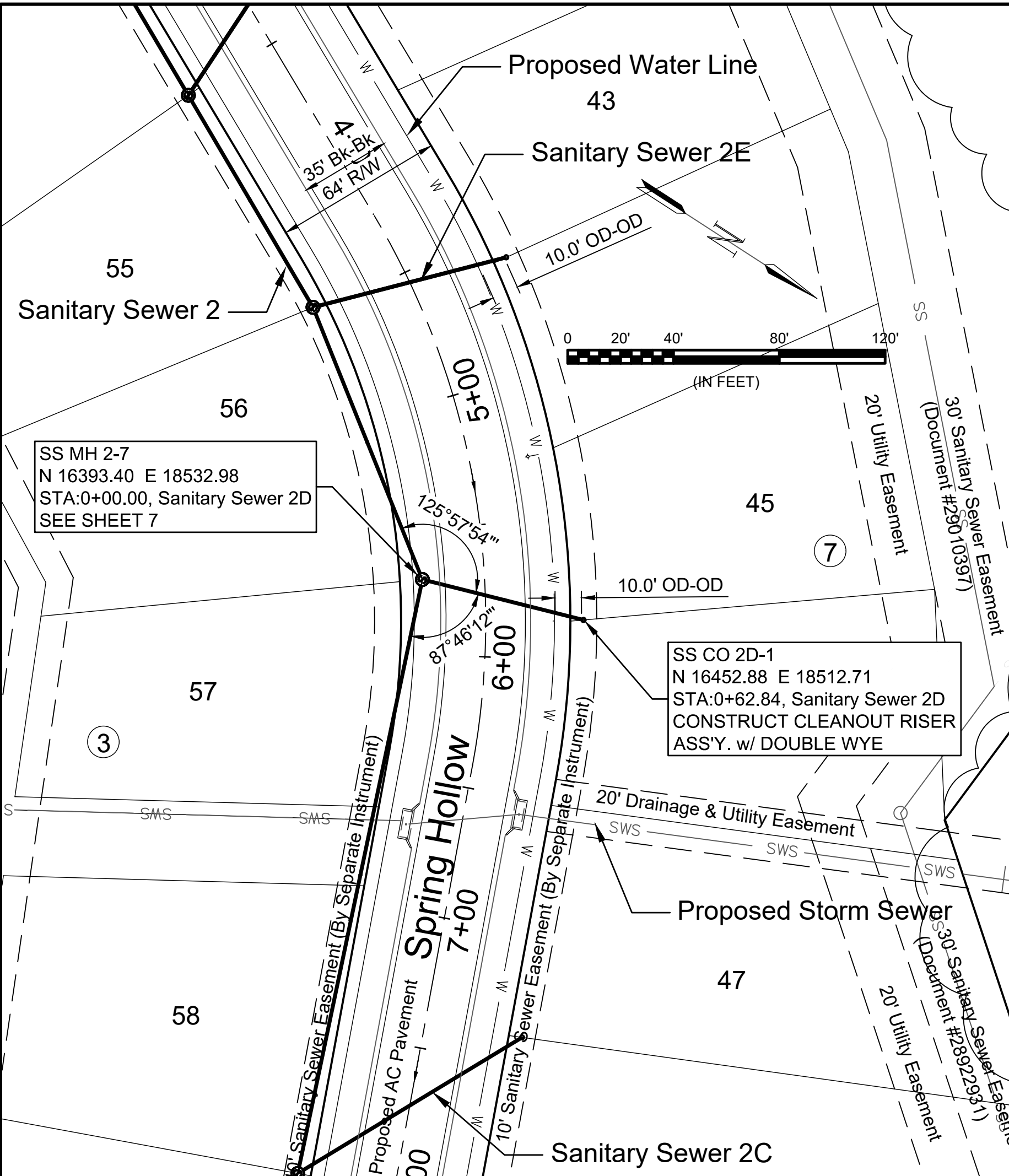
File: L:\2017\17264889 - Clear Ridge Phase 1\Drawings\C3D\Sanitary09 - Sanitary Sewer 2ABC.dwg, Last Save: 6/20/2018 2:46 PM, Last saved by: MTDolechek
 Last plotted by: Dolechek, Mark T., Plot Style: ---, Plot Scale: 1:2,865, Plot Date: 7/16/2018 3:46 PM, Plotter used: None



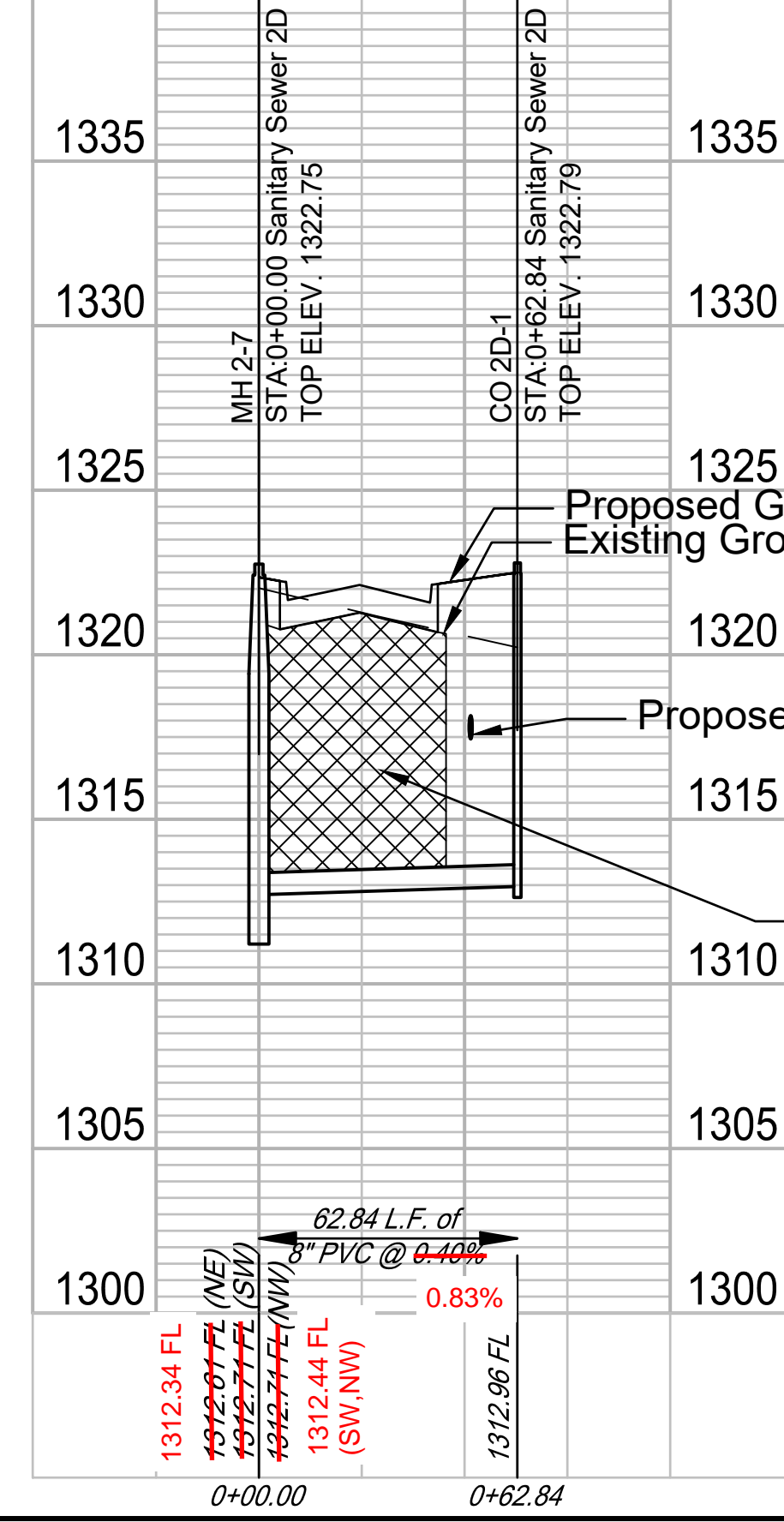
© 2017 GARVER, LLC
 THIS DOCUMENT, ALONG WITH THE IDEAS AND DESIGNS CONVEYED HEREIN, SHALL BE CONSIDERED INSTRUMENTS OF PROFESSIONAL SERVICE AND ARE PROPERTY OF GARVER, LLC. ANY USE, REPRODUCTION, OR DISTRIBUTION OF THIS DOCUMENT, ALONG WITH THE IDEAS AND DESIGN CONTAINED HEREIN, IS PROHIBITED UNLESS AUTHORIZED IN WRITING BY GARVER, LLC OR EXPLICITLY ALLOWED IN THE GOVERNING PROFESSIONAL SERVICES AGREEMENT FOR THIS WORK.



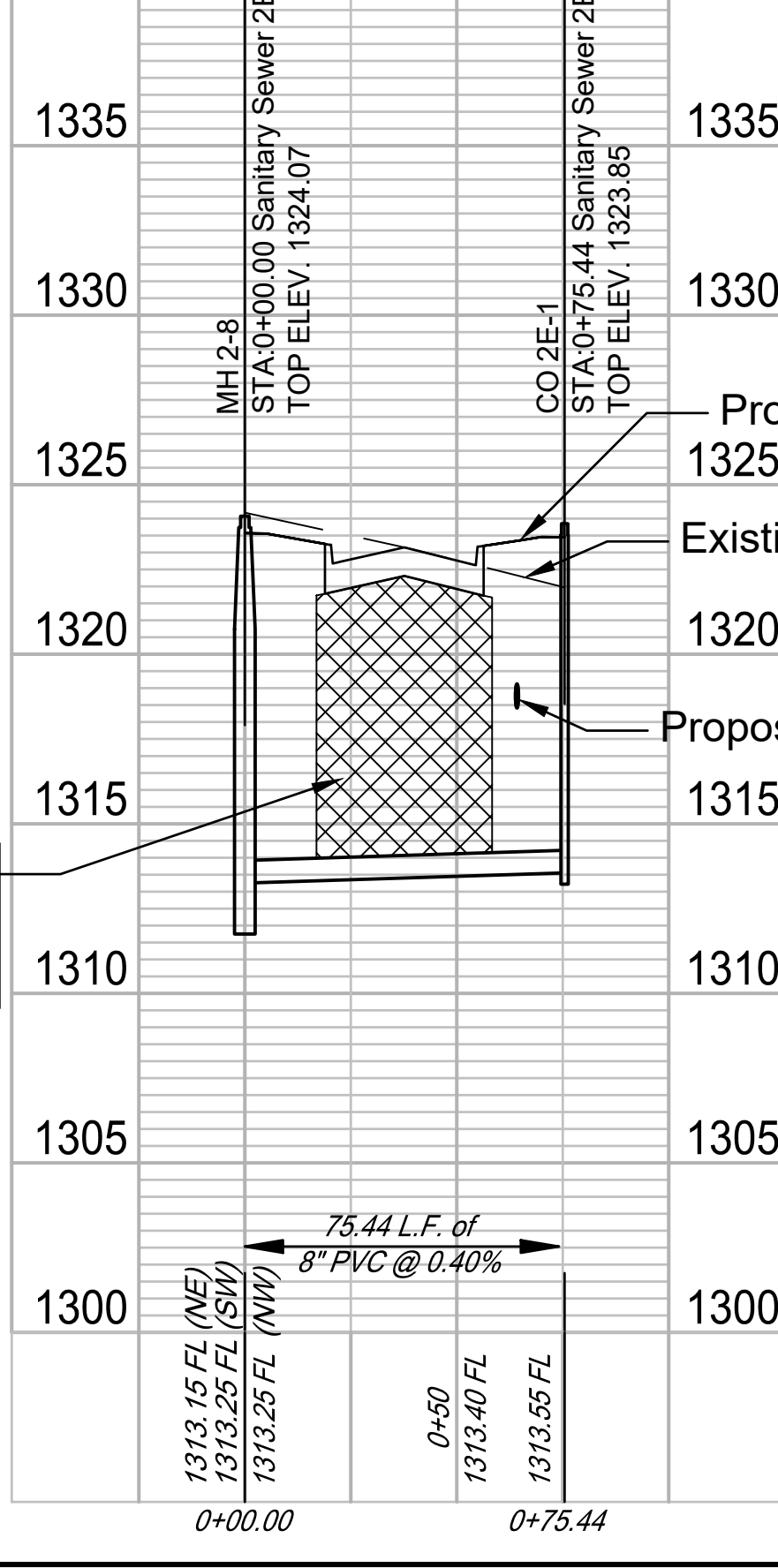
Digitally Signed 07/16/2018



1340 Sanitary Sewer 2D 1340

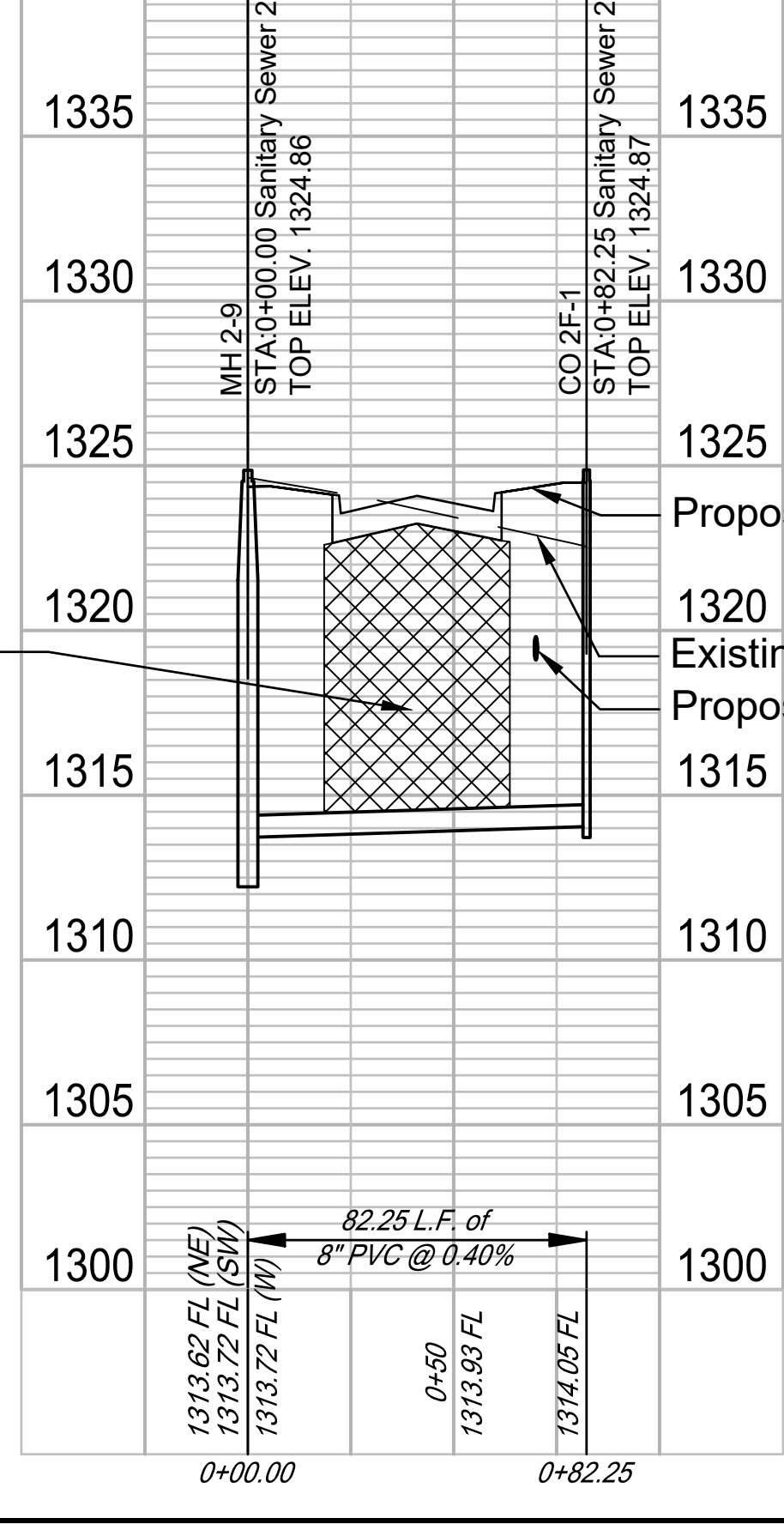


1340 Sanitary Sewer 2E 1340



NOTE
 Contractor to grade around manholes and cleanouts as shown on the detail on Sheet 6. Grading subsidiary to manholes and cleanouts.

1340 Sanitary Sewer 2F 1340



File: L:\2017\17264889 - Clear Ridge Phase 1\Drawings\C3D\Sanitary10 - Sanitary Sewer 2DEF.dwg, Last Save: 6/20/2018 2:45 PM, Last saved by: MTDolechek
 Last plotted by: Dolechek, Mark T., Plot Style: ---, Plot Scale: 1:2,895, Plot Date: 7/16/2018 3:47 PM, Plotter used: None

REV.	DATE	DESCRIPTION	BY

CITY OF WICHITA
 WICHITA, KS
 CLEAR RIDGE ADDITION,
 PHASE 1

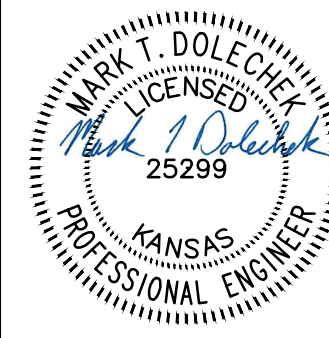
Sanitary Sewer
 2D-F

JOB NO.: 17264889
 DATE: JULY 2018
 DESIGNED BY: MTD
 DRAWN BY: MTD/CDJ

BAR IS ONE INCH ON ORIGINAL DRAWING
 0" = 1" IF NOT ONE INCH ON THIS SHEET, ADJUST SCALES ACCORDINGLY.
 DRAWING NUMBER
17264889
 SHEET NUMBER **10** OF **19**



© 2017 GARVER, LLC
 THIS DOCUMENT, ALONG WITH THE
 IDEAS AND DESIGNS CONVEYED
 HEREIN, SHALL BE CONSIDERED
 INSTRUMENTS OF PROFESSIONAL
 SERVICE AND ARE PROPERTY OF
 GARVER, LLC. ANY USE,
 REPRODUCTION, OR DISTRIBUTION
 OF THIS DOCUMENT, ALONG WITH
 THE IDEAS AND DESIGN CONTAINED
 HEREIN, IS PROHIBITED UNLESS
 AUTHORIZED IN WRITING BY
 GARVER, LLC OR EXPLICITLY
 ALLOWED IN THE GOVERNING
 PROFESSIONAL SERVICES
 AGREEMENT FOR THIS WORK.

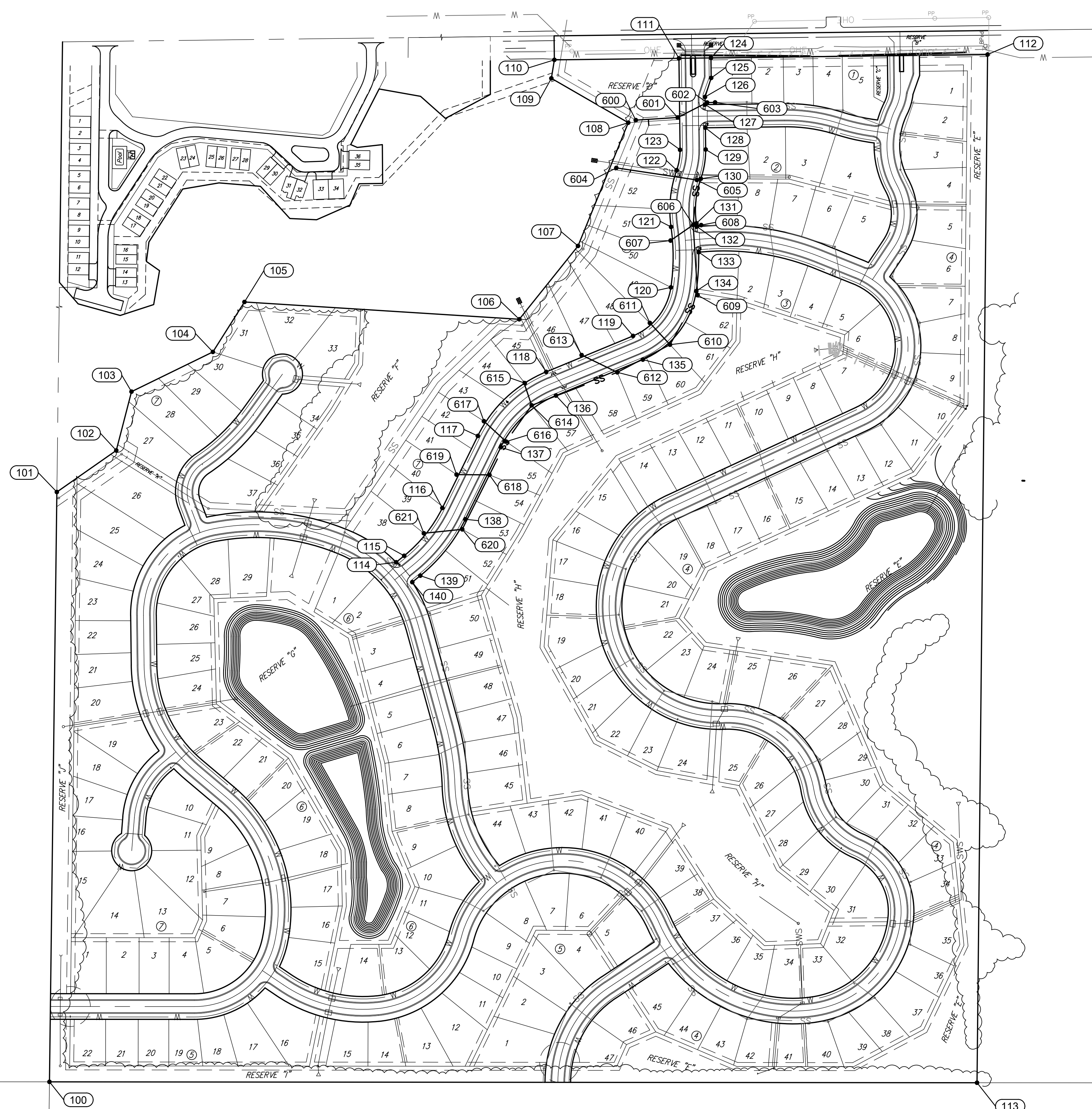
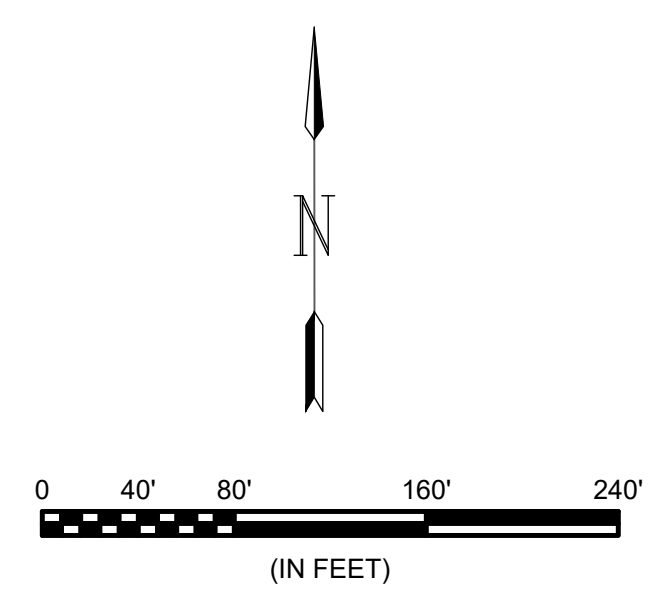


Digitally Signed 07/18/2018

Point Table			
Point #	Northing	Easting	Description
100	14702.48	17327.60	PROP CNR
101	16176.82	17346.09	PROP CNR
102	16280.61	17494.65	PROP CNR
103	16427.65	17532.66	PROP CNR
104	16526.93	17736.04	PROP CNR
105	16651.76	17815.03	PROP CNR
106	16608.56	18502.01	PROP CNR
107	16791.80	18648.80	PROP CNR
108	17099.82	18774.40	PROP CNR
109	17210.70	18582.16	PROP CNR
110	17256.92	18589.67	PROP CNR
111	17260.73	18901.10	PROP CNR
112	17270.18	19672.60	PROP CNR
113	14700.31	19646.22	PROP CNR
114	16001.21	18194.26	BLK CNR
115	16017.46	18214.33	PC
116	16136.88	18309.72	PT
117	16316.93	18398.39	PC
118	16477.01	18569.30	PT
119	16566.86	18786.45	PC
120	16688.26	18881.12	PCC
121	16839.33	18881.42	PCC
122	16981.15	18895.49	PCC
123	17032.08	18903.90	PT
124	17261.71	18981.10	BLK CNR
125	17211.71	18981.71	PHI
126	17164.15	18966.29	PHI
127	17145.15	18966.52	BLK CNR
128	17087.15	18967.23	BLK CNR
129	17032.86	18967.90	PC
130	16959.82	18955.83	PCC
131	16848.40	18944.78	PCC
132	16840.12	18945.90	BLK CNR
133	16776.29	18950.62	BLK CNR
134	16678.94	18944.44	PCC
135	16507.72	18810.92	PT
136	16417.88	18593.77	PC
137	16288.65	18455.81	PT
138	16108.60	18367.13	PC
139	15967.71	18254.60	PT

Point Table			
Point #	Northing	Easting	Description
140	15951.47	18234.53	BLK CNR
600	17106.28	18793.23	SS EXIST. MH 1-0 0+00
601	17112.83	18897.91	SS MH 1-1 1+05
602	17150.21	18971.46	SS MH 1-2 1+87
603	17150.45	18991.46	PIPE PLUG 2+07
604	16986.83	18744.52	SS MH 2-1 0+00
605	16956.79	18945.82	SS MH 2-2 2+03
606	16844.46	18936.75	SS MH 2-3 3+16
607	16805.29	18880.16	SS CO 2A-1 0+69
608	16843.86	18956.74	PIPE PLUG 0+20
609	16668.87	18947.81	SS MH 2-4 4+92
610	16545.09	18878.78	SS MH 2-5 6+34
611	16599.30	18828.40	SS CO 2B-1 0+74
612	16475.89	18747.06	SS MH 2-6 8+48
613	16519.06	18657.84	SS CO 2C-1 0+74
614	16393.40	18532.98	SS MH 2-7 9+97
615	16448.92	18515.79	SS CO 2D-1 0+56
616	16302.76	18469.06	SS MH 2-8 11+10
617	16353.77	18413.59	SS CO 2E-1 0+74
618	16219.66	18427.40	SS MH 2-9 12+16
619	16220.28	18345.22	SS CO 2F-1 0+82
620	16083.50	18359.46	SS MH 2-10 14+35
621	16073.63	18263.41	SS CO 2-11 15+09

615 - N: 16452.88 E: 18512.71



File: L:\2017\17264889 - Clear Ridge Phase 1\Drawings\C3D\Similar\12 - Bubble Map.dwg Last Save: 6/20/2018 5:26 PM Last saved by: MTDolechek
 Last plotted by: Dolechek, Mark T. Plot Style: --- Plot Scale: 1:2,500 Plot Date: 7/16/2018 3:47 PM Plotter used: None

REV.	DATE	DESCRIPTION	BY

CITY OF WICHITA
 WICHITA, KS
 CLEAR RIDGE ADDITION,
 PHASE 1

Bubble Map

JOB NO.: 17264889
 DATE: JULY 2018
 DESIGNED BY: MTD
 DRAWN BY: MTD/CDJ

BAR IS ONE INCH ON ORIGINAL DRAWING
 0 1" IF NOT ONE INCH ON THIS SHEET, ADJUST SCALES ACCORDINGLY.

DRAWING NUMBER
17264889
 SHEET NUMBER **12** OF **19**

RECORD DRAWINGS
 Contractor: Mies Construction
 Inspector: Mark Dolechek/Patrick Herman
 GARVER
 PDF By: PMH 11/06/18