

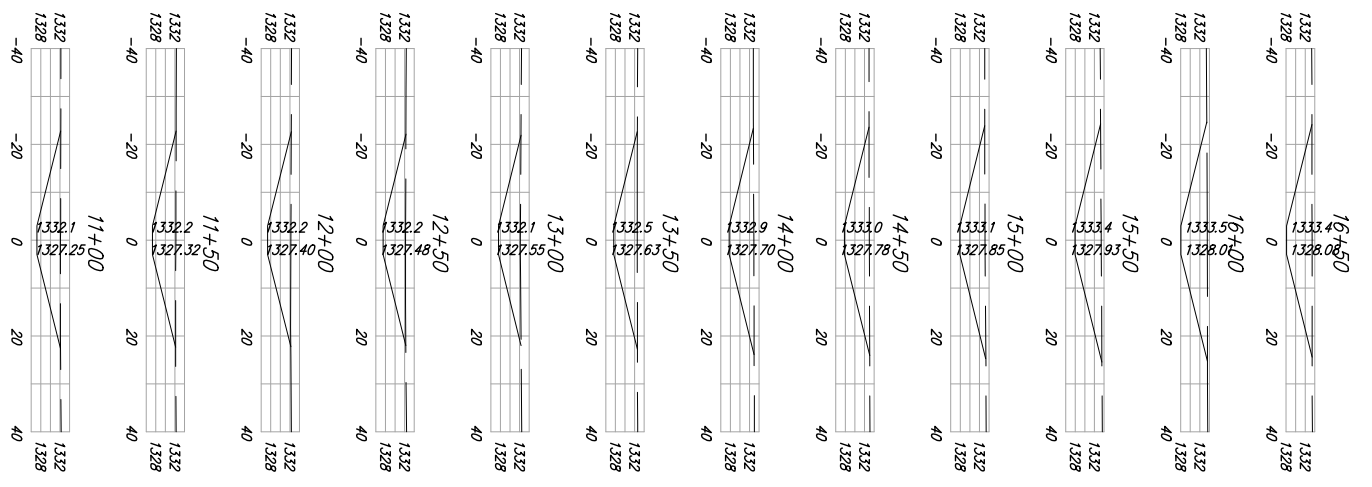
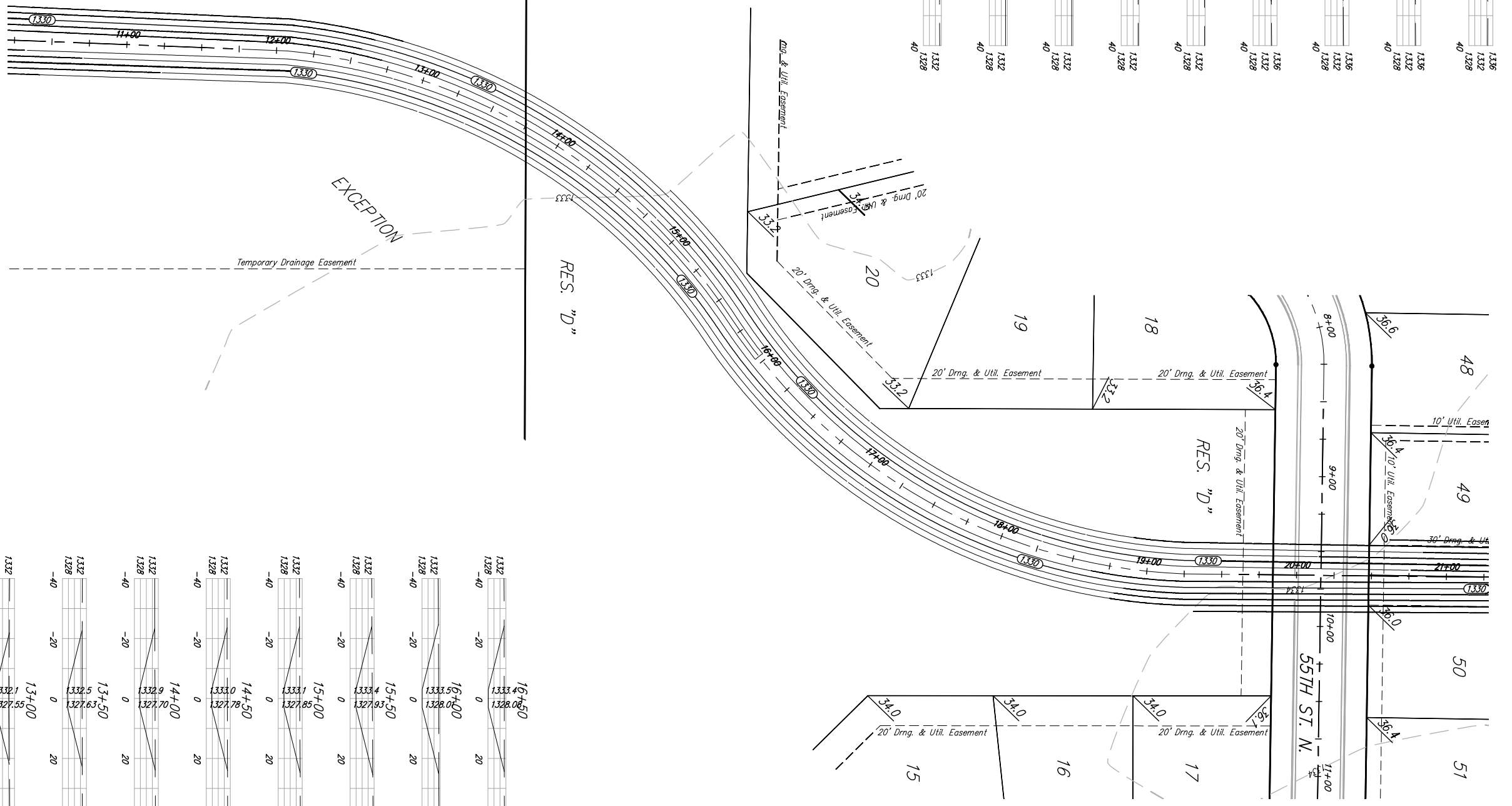
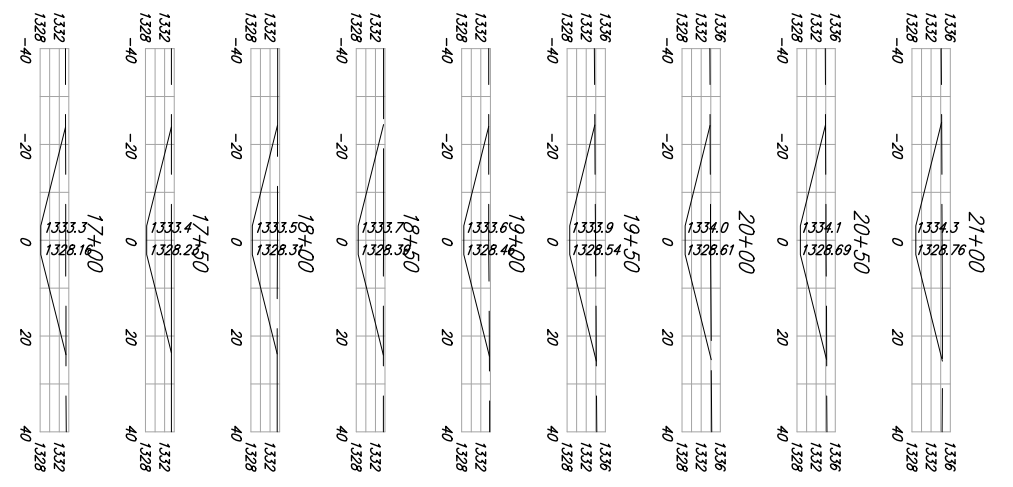
**Baughman**  
**Temporary Ditch**  
 NORTHGATE ADDITON  
 Storm Water Drain #308

Engineering Company, P.A. 315 Elm St., Waltham, MA 02451  
 ENGINEERING | SURVEYING | PLANNING | LANDSCAPE ARCHITECTURE

PROJECT NUMBER: 46684254  
 DESIGN: AEG  
 DRAWN: RDM  
 APPROVED: AEG DATE: 4/07  
 SCALE: NOTED  
 SHEET: 12 OF 48

Northgate Mass Overlay MASS\_PONDING

Scale (Plan): 1" = 40'  
 Scale (X-Sections): 1" = 20'



**BENCHMARKS:**  
 BM #1: BENT 604 NAIL IN LIGHT POLE,  
 55' SSW OF THE E1/4 COR., SEC. 13,  
 TWP. 26-S, R-1-W,  
 ELEV. = 1336.54 NGVD29

BM #2: RAILROAD SPIKE IN E. FACE OF  
 N. 7/4 POLE, 60' S. OF N. LINE, S1/2  
 NE1/4, SEC. 13, TWP. 26-S, R-1-W,  
 ELEV. = 1336.93 NGVD29

BM #3: "I" CUT ON TOP OF NE COR.  
 OF WATER VAULT, 437' E. & 54' N.  
 R-1-W,  
 ELEV. = 1334.81 NGVD29