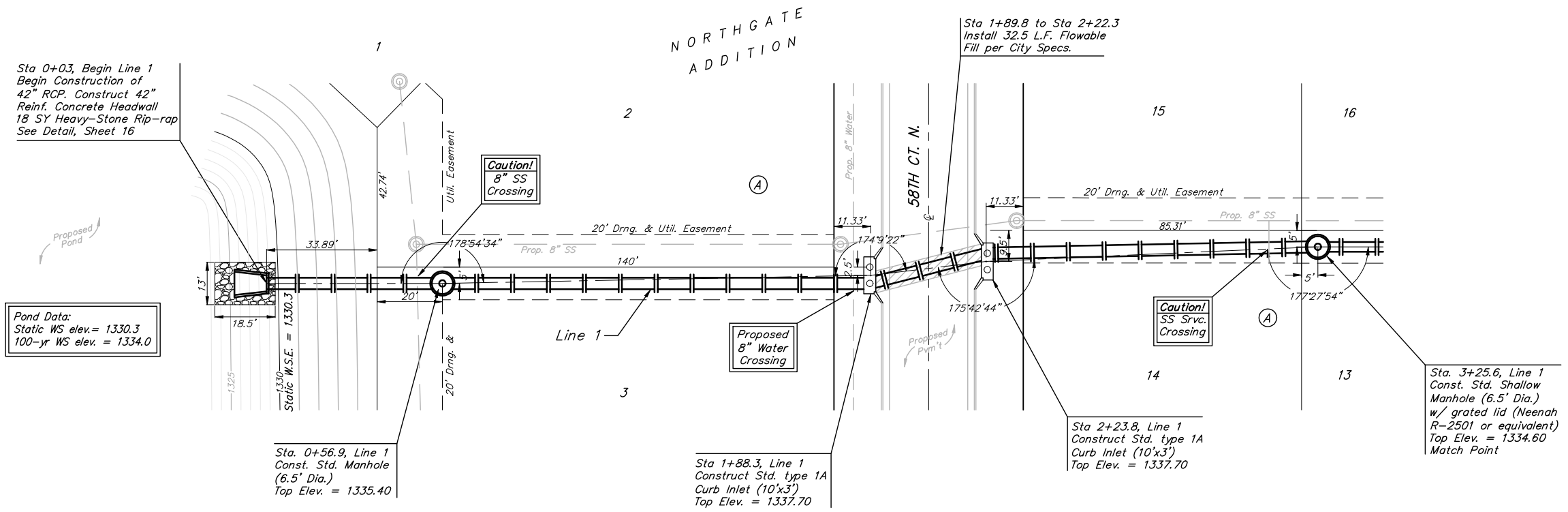


BENCHMARKS:
 BM #1: BENT 60d NAIL IN LIGHT POLE, 55' SSW. OF THE E1/4 COR., SEC. 13, TWP. 26-S, R-1-W. ELEV. = 1336.54 NGVD29

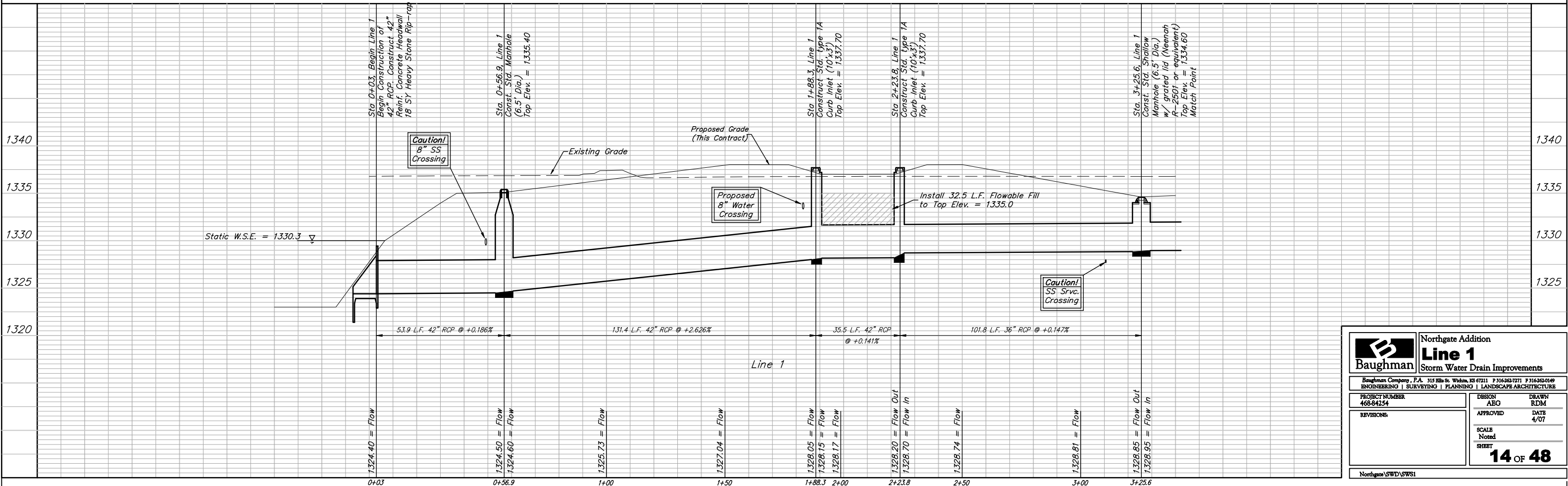
BM #2: RAILROAD SPIKE IN E. FACE OF N. "H" POLE, 60± S. OF N. LINE, S1/2, NE1/4, SEC. 13, TWP. 26-S, R-1-W. ELEV. = 1335.93 NGVD29

BM #3: "□" CUT ON TOP OF NE COR. OF WATER VAULT, 437± E. & 54± N. OF S1/4 COR., SEC. 13, TWP. 26-S, R-1-W. ELEV. = 1334.81 NGVD29

Scale: 1" = 20' Horizontal
 1" = 5' Vertical
 ● = Iron



Pond Data:
 Static WS elev. = 1330.3
 100-yr WS elev. = 1334.0



		Northgate Addition	
		Line 1	
Storm Water Drain Improvements		ENGINEERING SURVEYING PLANNING LANDSCAPE ARCHITECTURE	
Baughman Company, P.A. 315 Ellis St. Wichita, KS 67211 P 316-262-7771 F 316-262-0149 468-84254		DESIGN: AEG DRAWN: RDM APPROVED: DATE 4/07 SCALE: Noted SHEET:	
PROJECT NUMBER: 468-84254 REVISIONS:		SHEET: 14 OF 48	
Northgate SWD/SWS1			