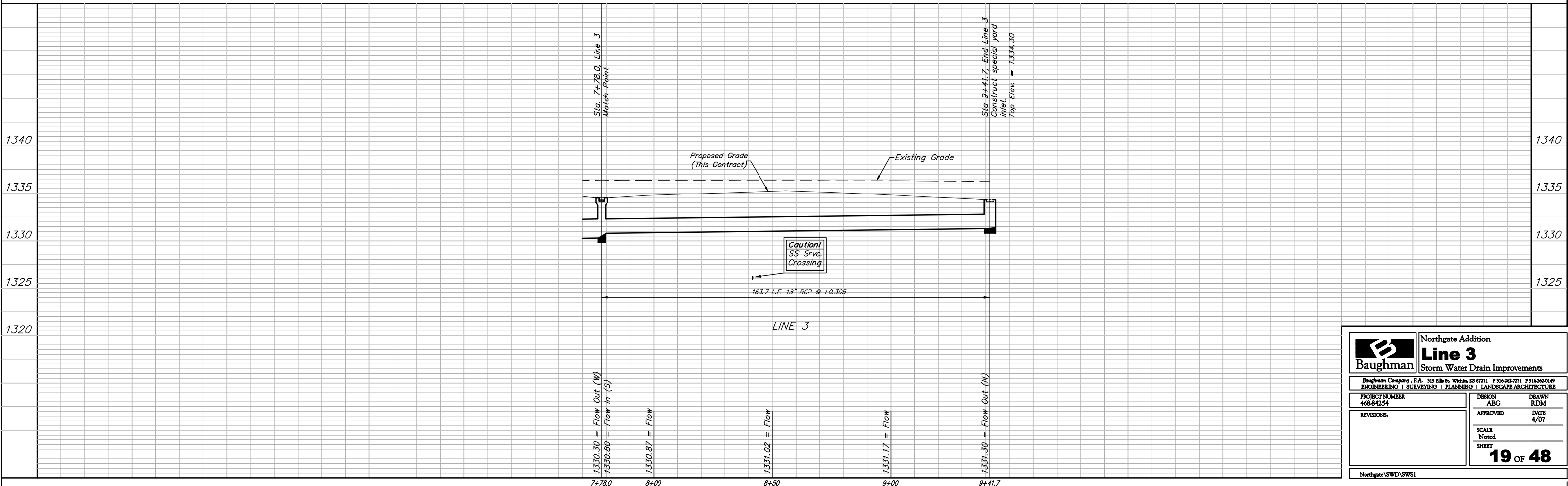
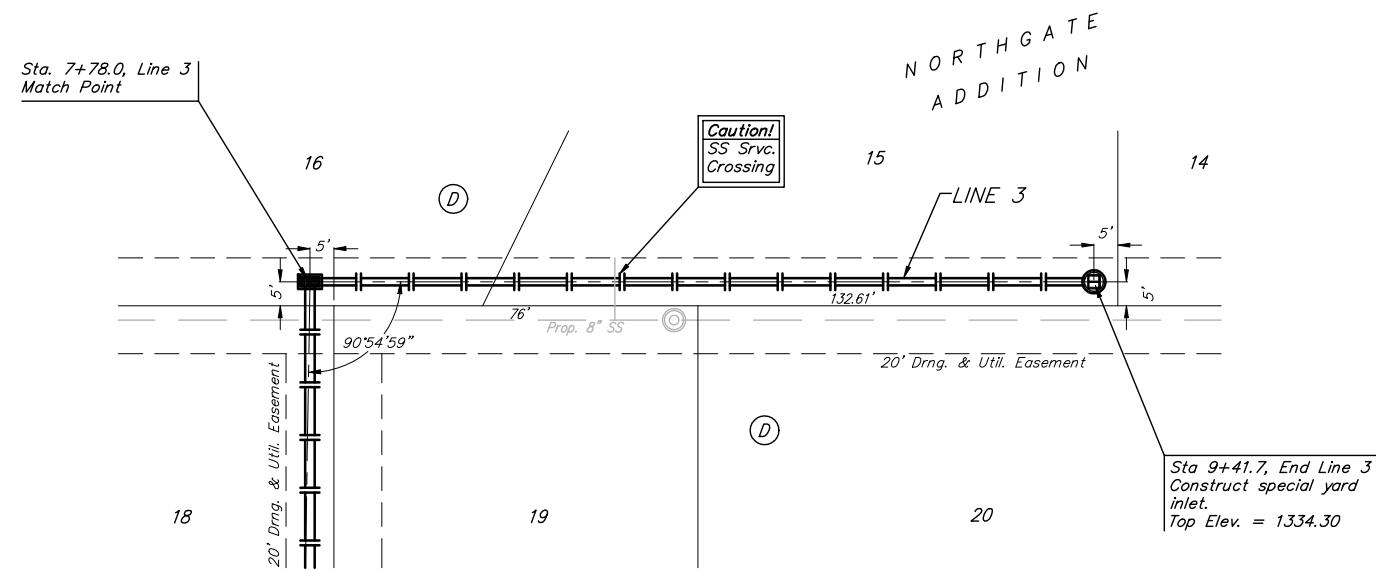


**BENCHMARKS:**  
 BM #1: BENT 60d NAIL IN LIGHT POLE, 55' SSW. OF THE E1/4 COR., SEC. 13, TWP. 26-S, R-1-W. ELEV. = 1336.54 NGVD29

BM #2: RAILROAD SPIKE IN E. FACE OF N. "H" POLE, 60'± S. OF N. LINE, S1/2, NE1/4, SEC. 13, TWP. 26-S, R-1-W. ELEV. = 1335.93 NGVD29

BM #3: "□" CUT ON TOP OF NE COR. OF WATER VAULT, 437'± E. & 54'± N. OF S1/4 COR., SEC. 13, TWP. 26-S, R-1-W. ELEV. = 1334.81 NGVD29

Scale: 1" = 20' Horizontal  
 1" = 5' Vertical  
 ● = Iron



		Northgate Addition	
		<b>Line 3</b>	
		Storm Water Drain Improvements	
<small>Baughman Company, P.A. 315 Ellis St. Wichita, KS 67211 P 316-262-7771 F 316-262-0149          ENGINEERING   SURVEYING   PLANNING   LANDSCAPE ARCHITECTURE</small>			
PROJECT NUMBER 468-84254	DESIGN ABG	DRAWN RDM	
REVISIONS	APPROVED	DATE 4/07	
	SCALE Noted	SHEET	
		<b>19 OF 48</b>	
<small>Northgate SWD/SWS1</small>			