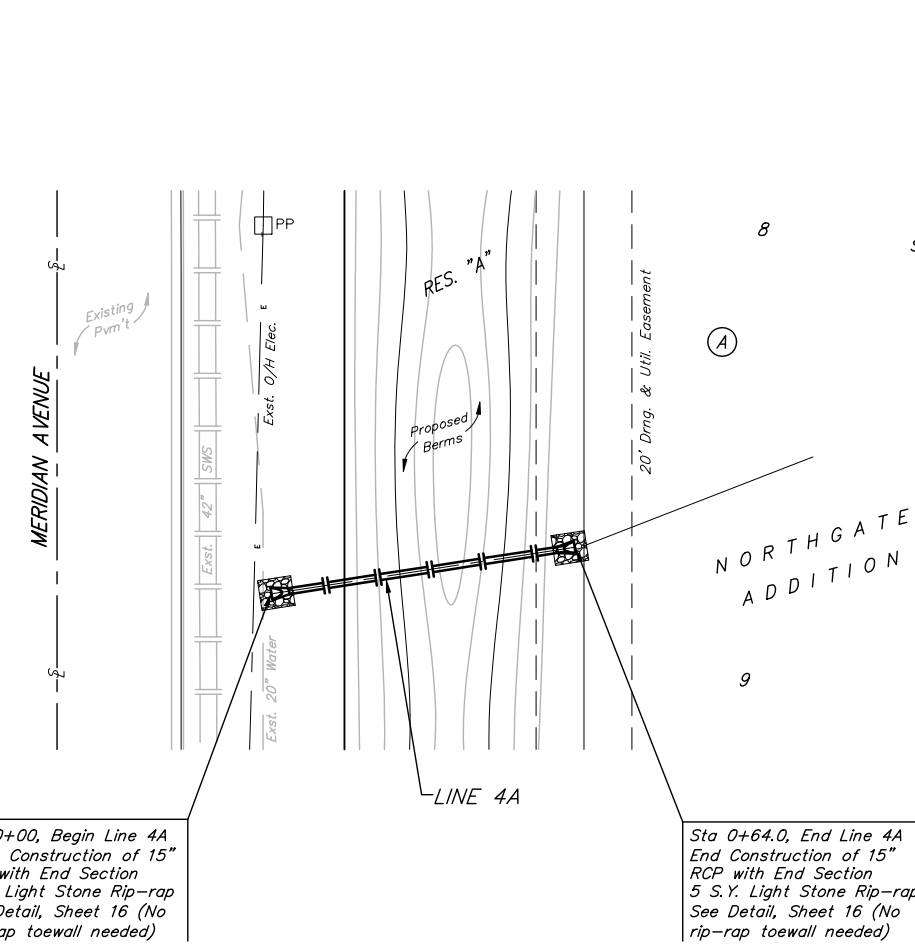
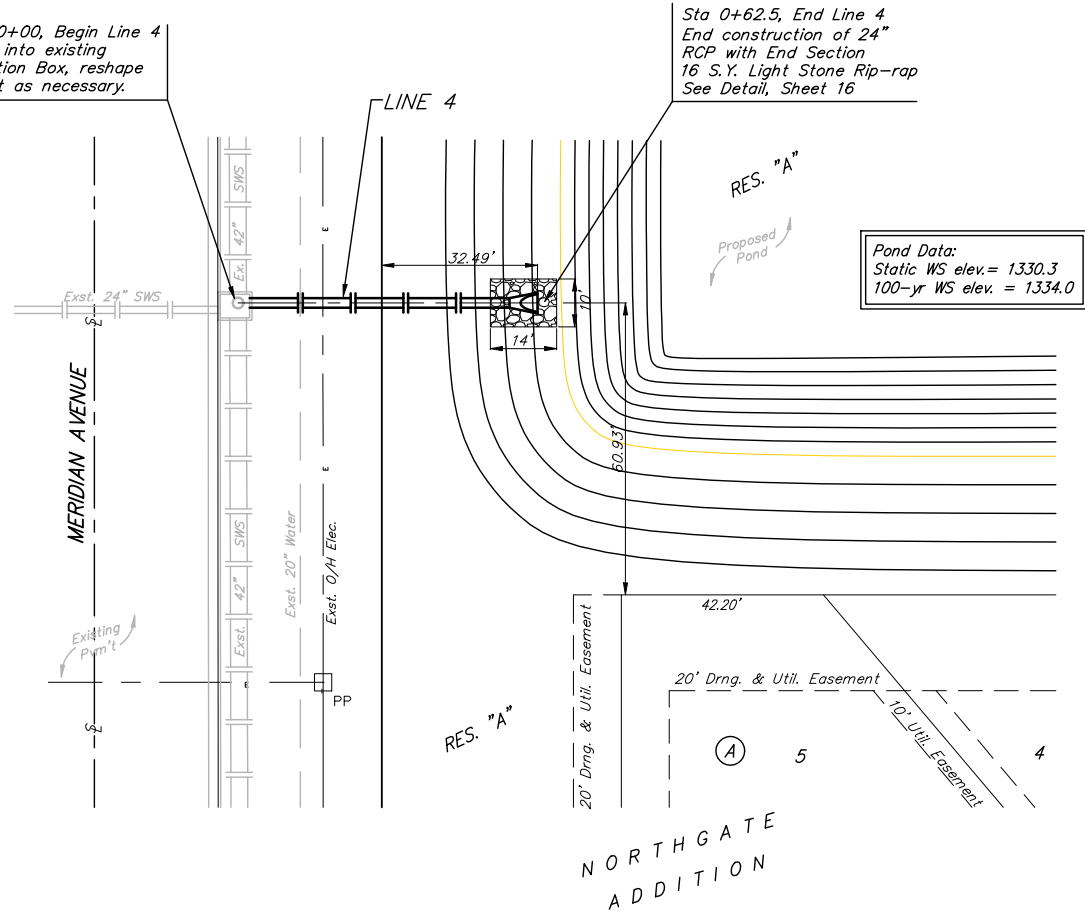


BENCHMARKS:
 BM #1: BENT 60d NAIL IN LIGHT POLE, 55' SSW. OF THE E1/4 COR., SEC. 13, TWP. 26-S, R-1-W. ELEV. = 1336.54 NGVD29
 BM #2: RAILROAD SPIKE IN E. FACE OF N. "H" POLE, 60± S. OF N. LINE, S1/2, NE1/4, SEC. 13, TWP. 26-S, R-1-W. ELEV. = 1335.93 NGVD29
 BM #3: "□" CUT ON TOP OF NE COR. OF WATER VAULT, 437± E. & 54± N. OF S1/4 COR., SEC. 13, TWP. 26-S, R-1-W. ELEV. = 1334.81 NGVD29

Sta 0+00, Begin Line 4
 Core into existing Junction Box, reshape invert as necessary.

Sta 0+62.5, End Line 4
 End construction of 24" RCP with End Section 16 S.Y. Light Stone Rip-rap See Detail, Sheet 16

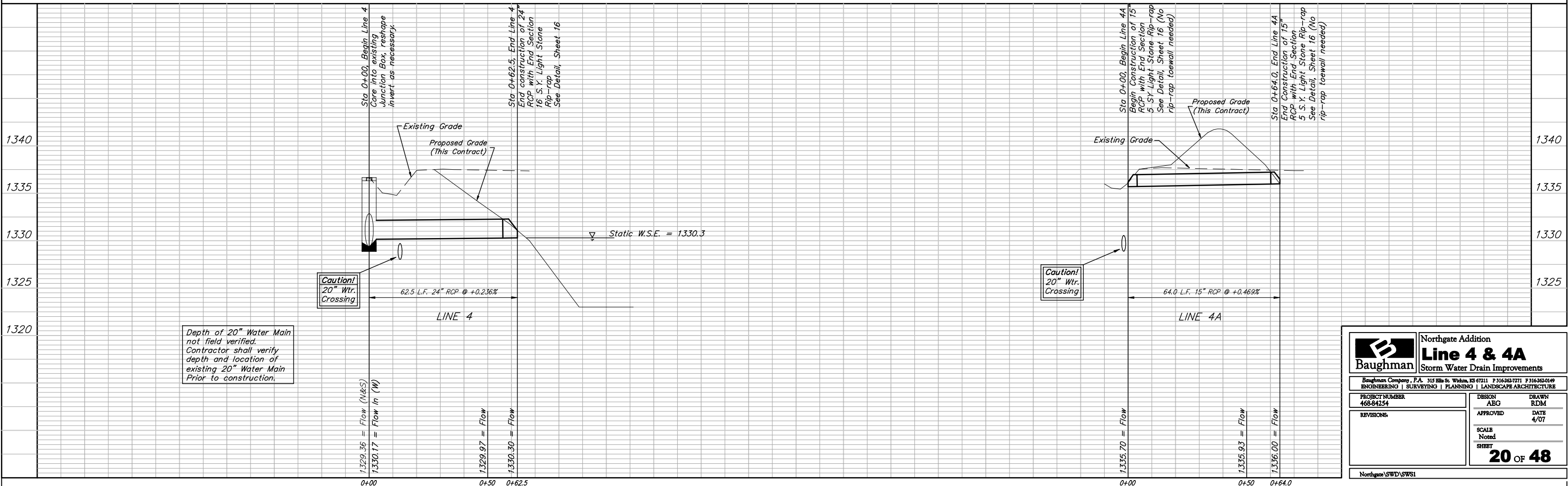
Pond Data:
 Static WS elev. = 1330.3
 100-yr WS elev. = 1334.0



Scale: 1" = 20' Horizontal
 1" = 5' Vertical
 ● = Iron

Sta 0+00, Begin Line 4A
 Begin Construction of 15" RCP with End Section 5 S.Y. Light Stone Rip-rap See Detail, Sheet 16 (No rip-rap toewall needed)

Sta 0+64.0, End Line 4A
 End Construction of 15" RCP with End Section 5 S.Y. Light Stone Rip-rap See Detail, Sheet 16 (No rip-rap toewall needed)



Depth of 20" Water Main not field verified. Contractor shall verify depth and location of existing 20" Water Main Prior to construction.

Caution!
 20" Wtr. Crossing

		Northgate Addition	
		Line 4 & 4A	
Storm Water Drain Improvements		ENGINEERING SURVEYING PLANNING LANDSCAPE ARCHITECTURE	
PROJECT NUMBER 468-84254		DESIGN ABG	DRAWN RDM
REVISIONS		APPROVED	DATE 4/07
		SCALE Noted	SHEET 20 OF 48
Northgate SWD/SWS1			