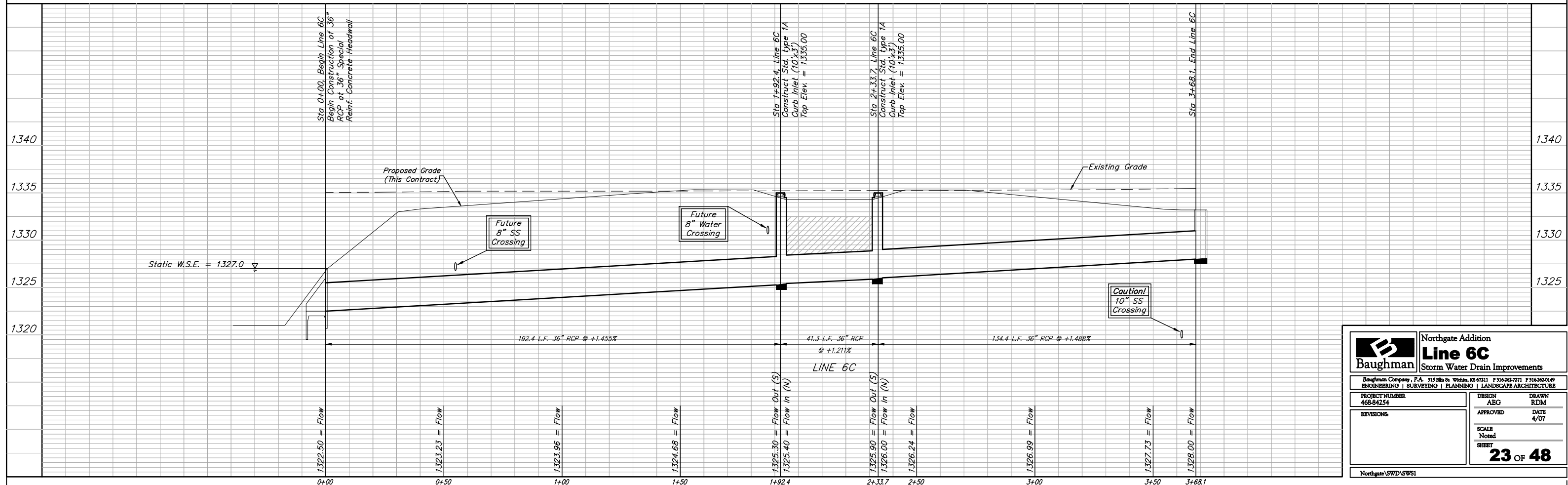
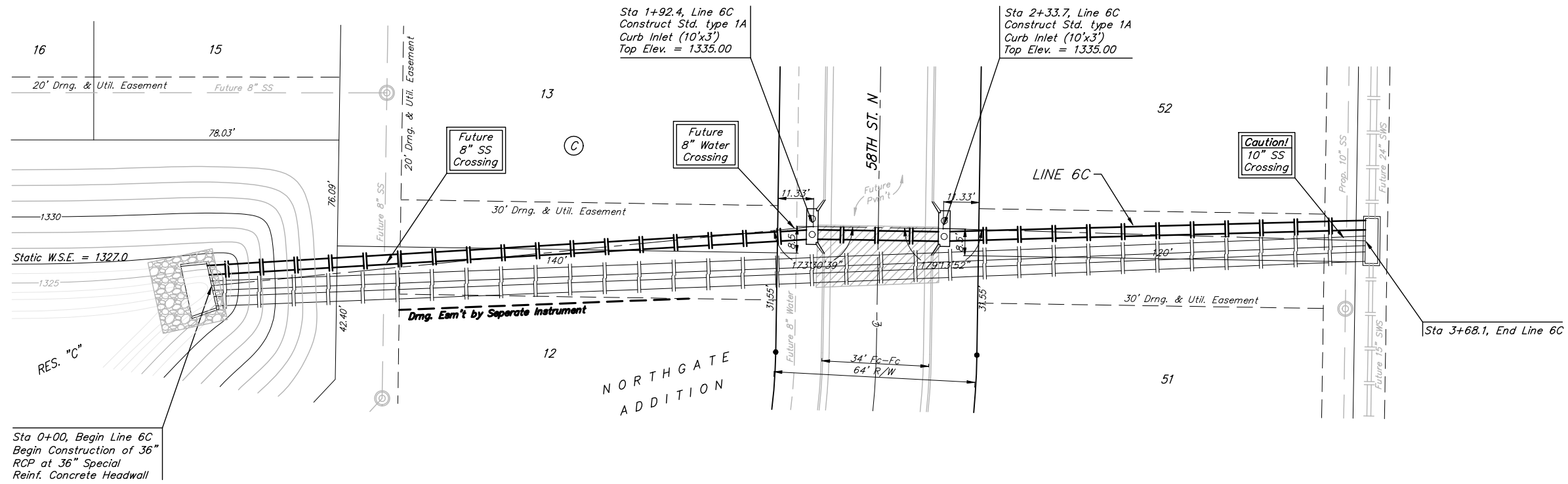


**BENCHMARKS:**  
 BM #1: BENT 60d NAIL IN LIGHT POLE, 55' SSW. OF THE E1/4 COR., SEC. 13, TWP. 26-S, R-1-W. ELEV. = 1336.54 NGVD29

BM #2: RAILROAD SPIKE IN E. FACE OF N. "H" POLE, 60± S. OF N. LINE, S1/2, NE1/4, SEC. 13, TWP. 26-S, R-1-W. ELEV. = 1335.93 NGVD29

BM #3: "□" CUT ON TOP OF NE COR. OF WATER VAULT, 437± E. & 54± N. OF S1/4 COR., SEC. 13, TWP. 26-S, R-1-W. ELEV. = 1334.81 NGVD29

Scale: 1" = 20' Horizontal  
 1" = 5' Vertical  
 ● = Iron



		<b>Northgate Addition</b> <b>Line 6C</b> Storm Water Drain Improvements	
		<small>Baughman Company, P.A. 315 Ellis St. Wilkes, KS 67111 P 316-262-7771 F 316-262-0149          ENGINEERING   SURVEYING   PLANNING   LANDSCAPE ARCHITECTURE</small>	
PROJECT NUMBER 468-84254	DESIGN AEG	DRAWN RDM	APPROVED DATE 4/07
REVISIONS	SCALE Noted	SHEET <b>23 OF 48</b>	
<small>Northgate SWD/SWS1</small>			