

**BENCHMARKS:**  
 City of Wichita Disc, SE corner of  
 29th & Tyler  
 32.30 ft South of centerline  
 30.00 ft East of centerline  
 9.20 ft Southeast of power pole  
 43.20 ft Southeast of section corner  
 Elev. = 178.04 (City Datum)

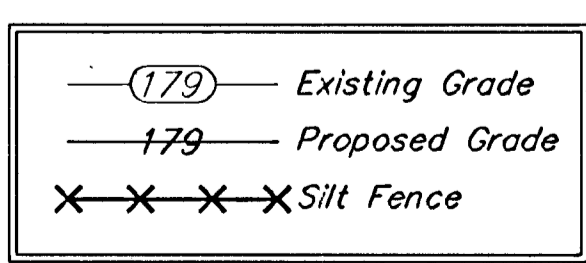
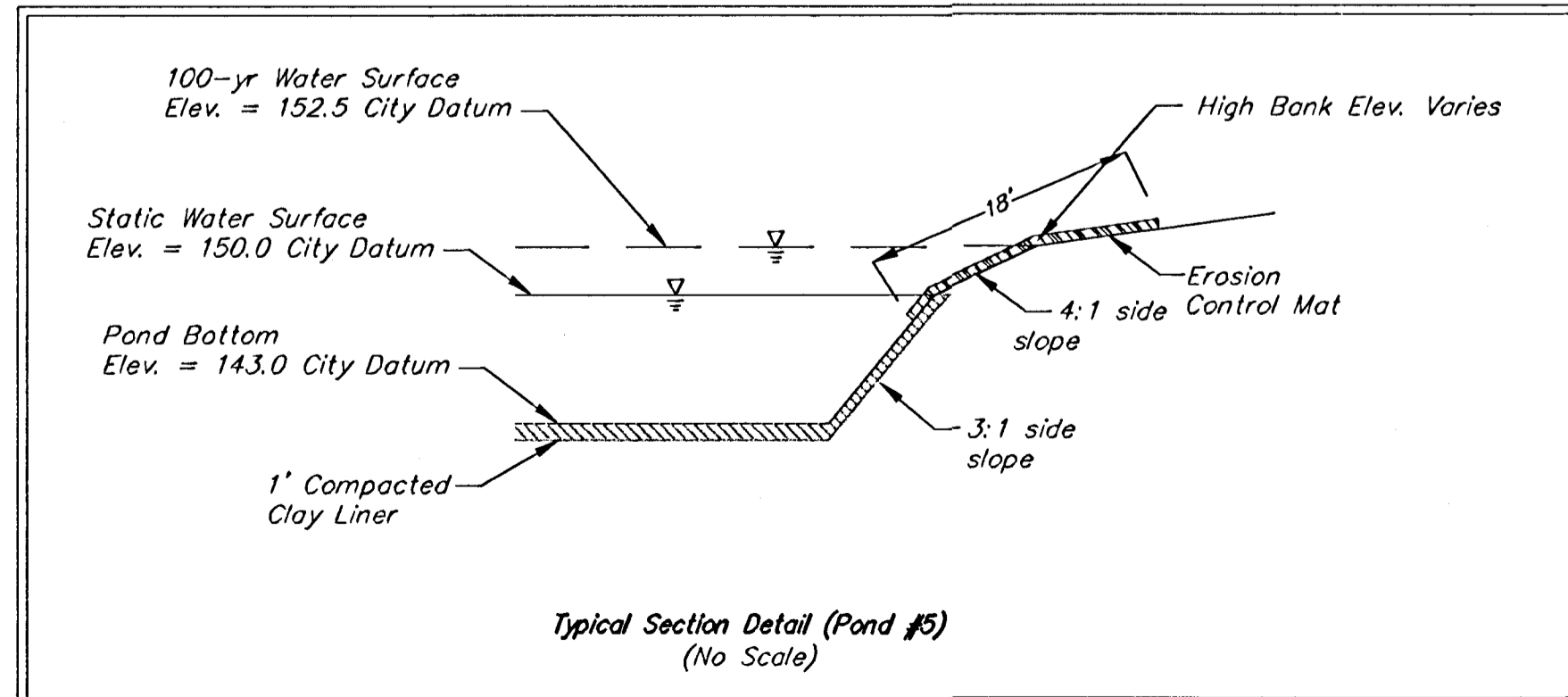
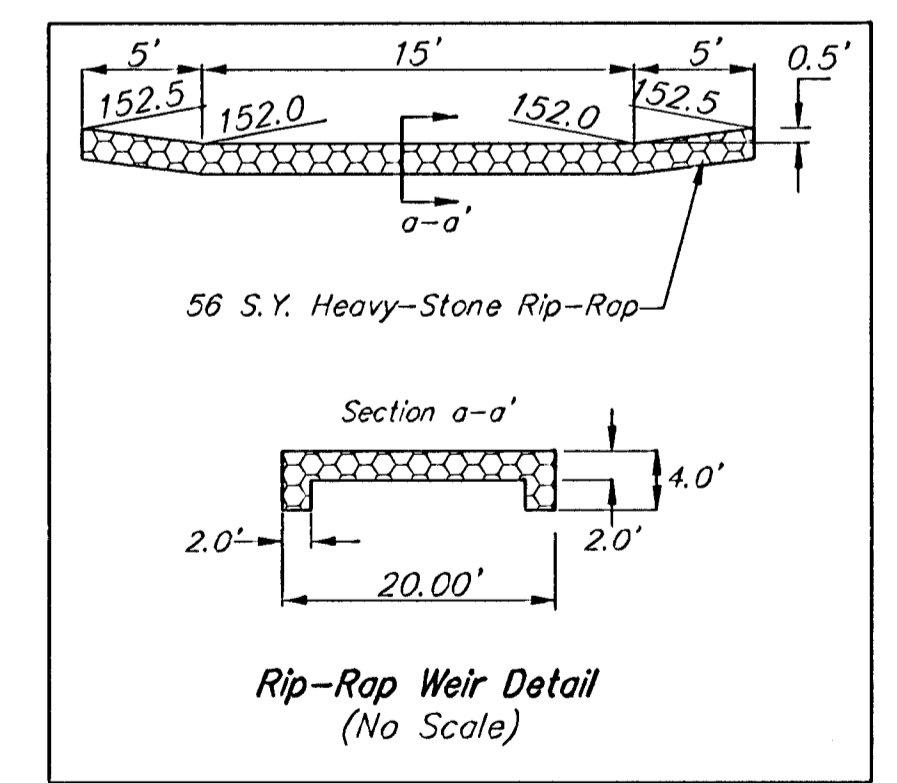
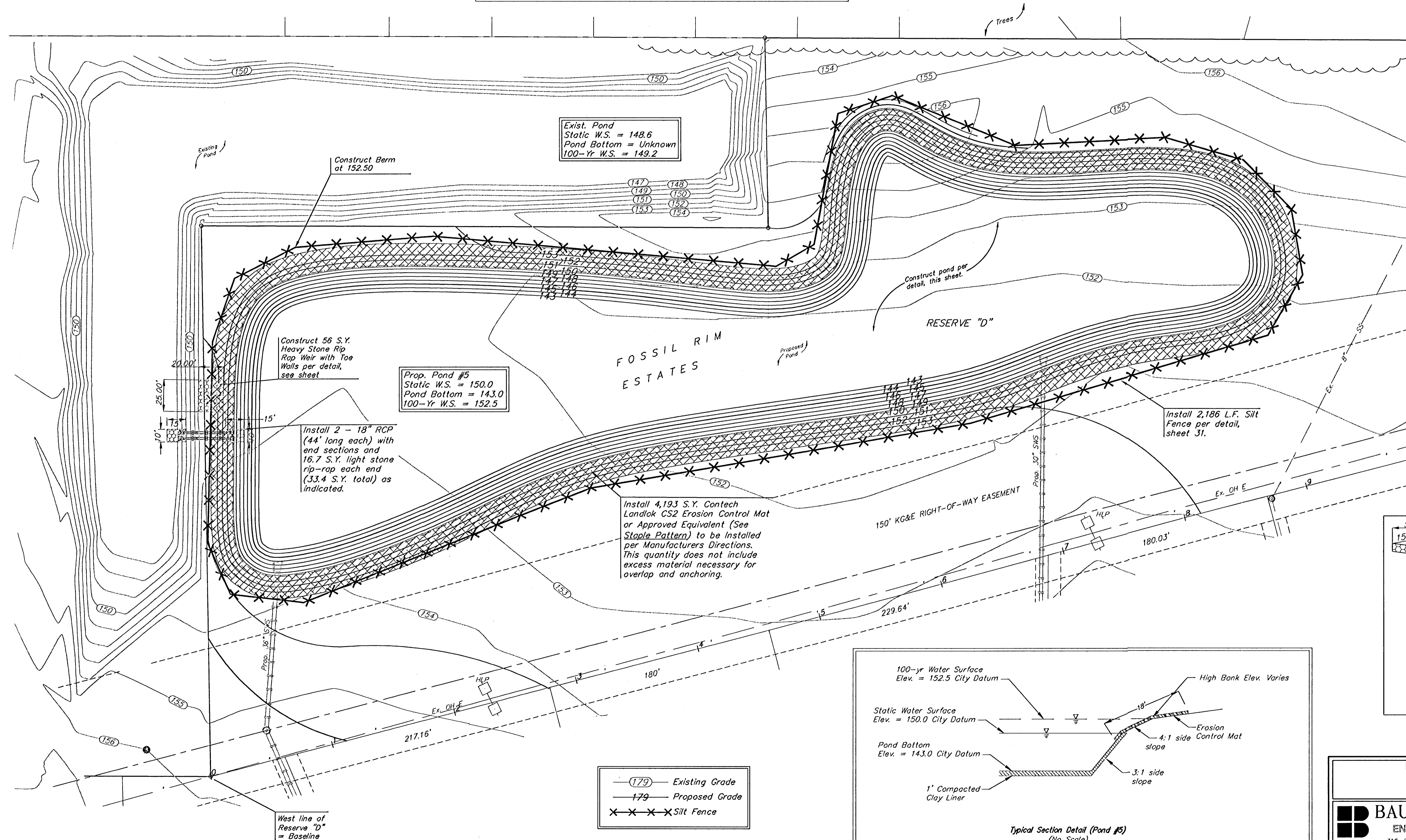
"□" Cut in top of curb on the West  
 side of Pepper Ridge 65± south of  
 Lot 8, Blk. B, Fossil Rim Estates.  
 Elev. = 174.92 (City Datum)

**EARTH WORK TOTALS (PONDS)**

	C.Y. Cut	C.Y. Fill
Pond #1 Construction	15,276	25
Pond #2 Construction	50,139	0
Pond #3 Construction	7,093	836
Pond #4 Construction	35,847	405
Pond #5 Construction	46,047	2,764
<b>Total Earthwork</b>	<b>154,402</b>	<b>4,030</b>
<i>(Ponds only)</i>		

Earthwork quantities do not include correction factors and are for reference only. See Mass Grading Plan for quantities related to that bid item.

Scale: 1" = 40'



**FOSSIL RIM ESTATES**  
**POND 5**  
 WICHITA, KANSAS

**BAUGHMAN COMPANY P.A.**  
 ENGINEERING, SURVEYING, & PLANNING  
 316-262-7271 • 315 ELLIS • WICHITA, KANSAS 67211

PROJECT NUMBER  
**488-89449**

DESIGN: NBW/SCL    DRAWN: TMS    APPROVED:    DATE: 1/8/03    SCALE: Noted

SHEET  
**28**  
 OF  
**38**

Fossil/Pond 02-04-E292