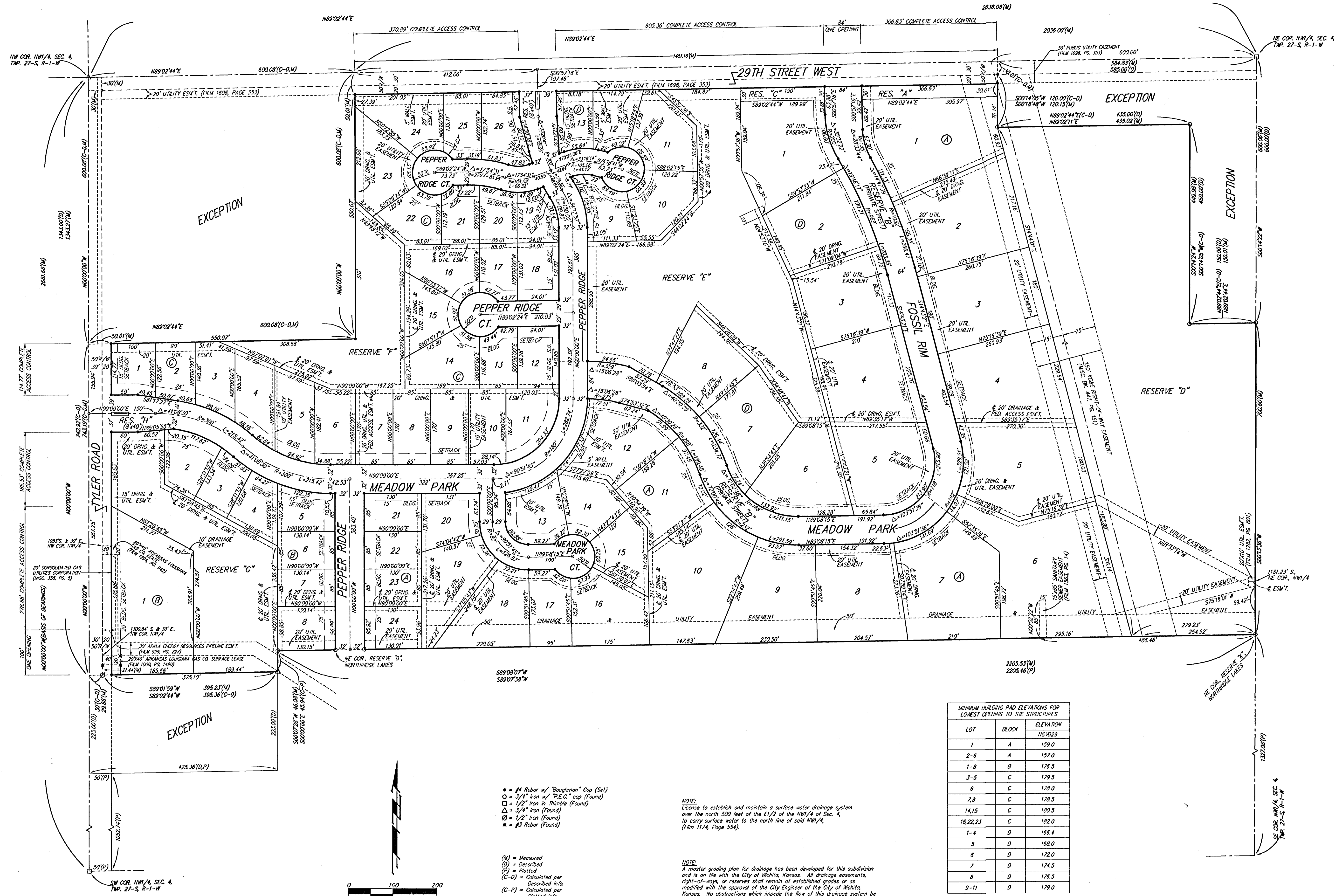


FOSSIL RIM ESTATES WICHITA, SEDGWICK COUNTY, KANSAS



MINIMUM BUILDING PAD ELEVATIONS FOR LOWEST OPENING TO THE STRUCTURES

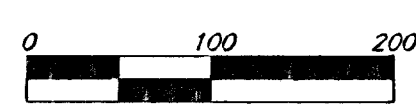
LOT	BLOCK	ELEVATION
1	A	159.0
2-6	A	157.0
1-8	B	178.5
3-5	C	179.5
6	C	178.0
7,8	C	178.5
14,15	C	180.5
16,22,23	C	182.0
1-4	D	156.4
5	D	168.0
6	D	172.0
7	D	174.5
8	D	178.5
9-11	D	179.0

- = #4 Rebar w/ "Baughman" Cap (Set)
- = 3/4" Iron w/ "P.E.C." cap (Found)
- = 1/2" Iron in Thimble (Found)
- △ = 3/4" Iron (Found)
- ◇ = 1/2" Iron (Found)
- ✱ = #3 Rebar (Found)

- (M) = Measured
- (D) = Described
- (P) = Plotted
- (C-D) = Calculated per Described Info.
- (C-P) = Calculated per Plotted Info.

NOTE:
License to establish and maintain a surface water drainage system over the north 500 feet of the E1/2 of the NW1/4 of Sec. 4, to carry surface water to the north line of said NW1/4, (Film 1174, Page 554).

NOTE:
A master grading plan for drainage has been developed for this subdivision and is on file with the City of Wichita, Kansas. All drainage easements, right-of-ways, or reserves shall remain of established grades or as modified with the approval of the City Engineer of the City of Wichita, Kansas. No obstructions which impede the flow of this drainage system be allowed.



BENCHMARK:
City of Wichita disc northwest wingwall of Tea Time and 29th Street North.
Elev. = 142.20 City Datum

123 W. 11th Street of NE 2nd St. 8A
Page 2 of 2