

# GENERAL NOTES:

1. The Contractor shall comply with all applicable safety regulations. All construction shall be completed following current City Standard Specifications and Special Provisions.

2. Contractor will be required to provide notice to utility companies a minimum of seventy-two (72) hours prior to any excavation, as follows:

Kansas One-Call 687-2470

The Contractor must notify the following in case of an emergency:

AT&T 1-800-246-8464  
 Black Hills Energy 1-800-694-8989  
 City of Wichita Water & Sewer 1-316-219-8921  
 City of Wichita Stormwater 1-316-268-4090  
 City of Wichita Traffic 1-316-268-4034  
 Cox Communications 1-888-249-3530  
 Kansas Gas Service 1-888-482-4950  
 Westar Energy 1-800-544-4857

3. Utility service lines, poles, etc. are to be adjusted as necessary by others prior to construction unless the plans specifically call for their adjustment by the Contractor or unless the plans specifically identify a utility to be adjusted by its owner during construction. Existing utilities and their location, as shown on the plans, represent the best information obtainable for design. The Contractor will be required to work around existing utilities within the right-of-way which do not conflict with proposed construction.

4. Rubble from the removal of miscellaneous structures and excess excavation which is to be wasted shall be disposed of on sites to be provided by the Contractor. These sites shall be approved by the Engineer as to suitability, appearance and site location. Locations, in the opinion of the Engineer, that will leave an unsightly appearance will not be approved. All disposal sites must be approved by the Kansas Department of Health and Environment. Material either stockpiled or disposed of in a flood plain will require a Kansas State Board of Agriculture permit. Any material dumped in waters of the United States or wetlands is subject to U.S. Corps of Engineers permitting regulations. Any material buried or stockpiled beyond approved construction limits will require additional archaeological investigations unless buried in a previously approved borrow location.

5. Trees and shrubs in public right-of-way which are in direct conflict with proposed new construction shall be removed by the Contractor with the City Engineer's approval. Trees and shrubs which are not in direct conflict with proposed new construction shall be saved and protected from damage.

6. The Contractor shall give all property owners and/or tenants of developed property abutting the construction of this project a minimum of ten (10) days notice prior to start of construction.

7. The Contractor shall be responsible for preserving property irons. The Contractor will be required to re-establish any property irons which are damaged or destroyed by his construction operations. Such irons shall be re-established by a licensed land surveyor in accordance with state laws.

8. All elevations shown are NGVD29.

9. All areas disturbed during construction that will not be under proposed pavement shall be restored to match existing conditions.

10. All stubs and capped pipes shall be located with green plastic tape in the same manner as risers.

11. Connecting to Existing Manholes: Prior to laying sewer lines using existing stubs in existing manholes, the Contractor shall expose and verify the elevation, grade and alignment of existing stubs and notify the Engineer of any deviation from the plans. Where the stub is unusable due to elevation grade or alignment, the Contractor shall remove the stub and plug the hole, and reshape the existing manhole invert to provide smooth flow. Where connection to an existing manhole that does not have an existing stub, the Contractor shall core cut into existing manhole wall to make connection using approved water stop gasket, and reshape the existing manhole invert to provide smooth flow. The cost of connect to existing manholes is incidental to the project.

12. Contractor shall limit the extent of trench open overnight and weekends to less than 50 feet.

13. Contractor shall provide positive drainage away from all manhole covers.

14. The Contractor shall prevent any construction debris from entering the existing sanitary sewer during construction.

15. The Contractor shall protect from damage and support existing utilities through construction as approved by the utility owner and the Engineer at the contractor's expense.

16. Contractor shall grade around exposed manholes at a 1:1 slope. Manholes set lower than existing grade shall have a 9" berm constructed around manhole to prevent infiltration into sanitary sewer system. Cost of dirt, labor, equipment, etc. to be incidental to cost of manhole. Easements shall be graded with the street improvement project as part of the mass grading plan.

17. All areas disturbed during construction shall be seeded at 300 lbs./acre with Rye Grass immediately following construction in that area. Contractor shall prepare ground per City Specifications.

18. All existing and proposed erosion control measures including silt fencing, erosion control mat, straw bales, inlet barriers, and const. entrance shall be maintained throughout construction by the contractor and until project is accepted by the City of Wichita. The on-site engineer shall complete weekly reports on the status of erosion control measures. The contractor shall be required to comply with maintenance and/or replacement of erosion control measures as determined by the on-site engineer until project is accepted by City of Wichita. Maintenance and/or replacement of erosion control measures to be paid by L.S. bid item "Maintain Existing BMPs".

19. All excess excavation shall remain on-site and shall be stockpiled or spread at a location determined by the engineer.

20. The developer for this project is R & R Realty, LLC, Jay W. Russell, Manager (316-722-2417) and Ritchie Associates, Inc., Kevin M. Mullen, President.

## Benchmarks

BM #1: Crows foot cut at SE corner of curb inlet south side of Kollmeyer near NE corner of Lot 82, Block A, Edge Water Addition.  
 Elev. = 1335.36 NGVD29

BM #2: Brass disc on top of curb by fire hydrant at SE corner of intersection of Kollmeyer and Kollmeyer Ct. (Lots 63-82, Block A) at the NW corner of Lot 82, Block A, Edge Water Addition.  
 Elev. = 1336.61 NGVD29

BM #3: "□" on Top of Curb, east side of Kollmeyer Ct. (Lots 63-82, Block A) near NW Corner of Lot 80, Block A, Edge Water Addition.  
 Elev. = 1333.99 NGVD29

BM #4: "□" on Top of Curb, east side of Kollmeyer Ct. (Lots 63-82, Block A) near NW Corner of Lot 78, Block A, Edge Water Addition.  
 Elev. = 1334.26 NGVD29

# Lateral 2, Main 24, SWI SANITARY SEWER IMPROVEMENTS

## to serve EDGE WATER ADD. - PH. II

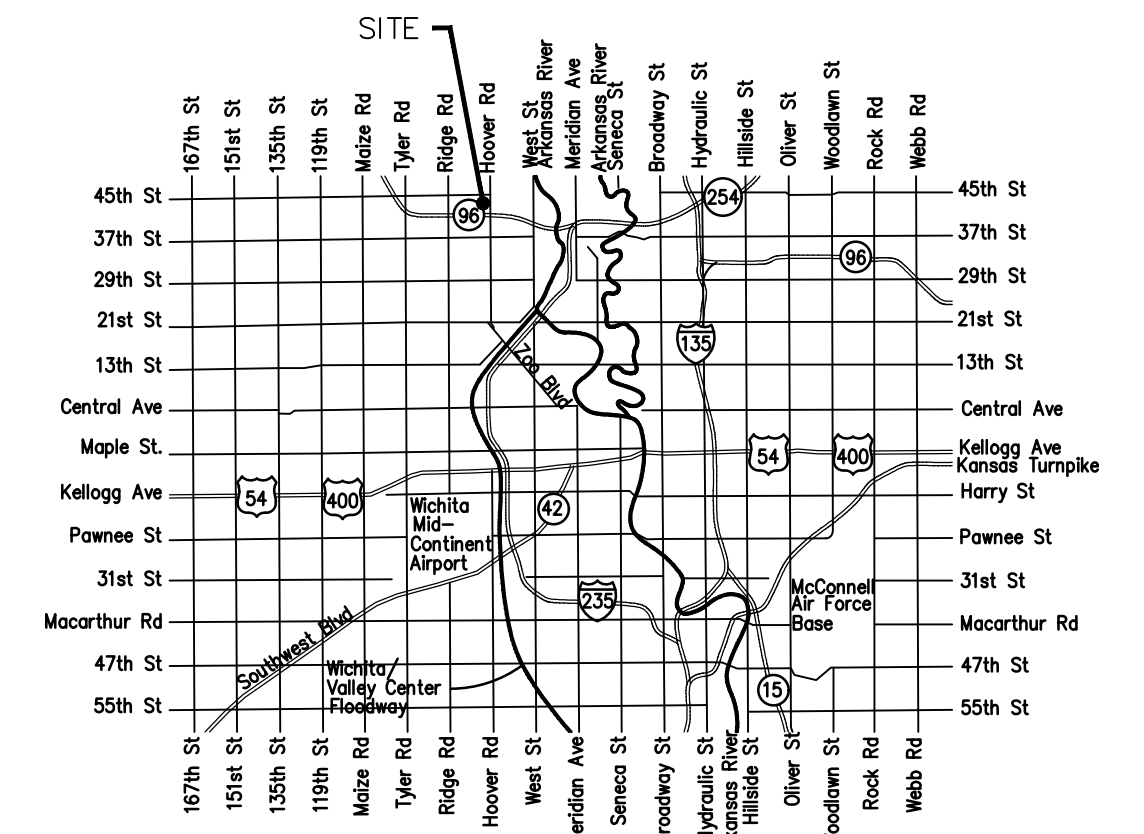
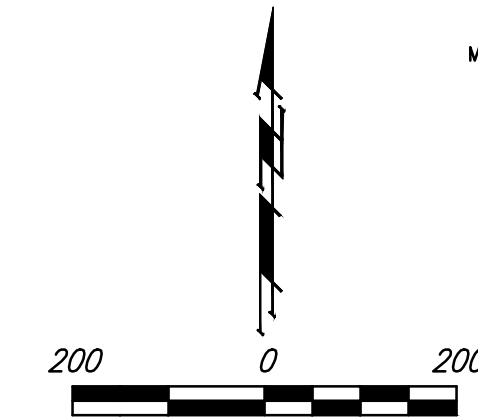
### CITY OF WICHITA, KANSAS

Gary Janzen, P.E. City Engineer

Project Number  
468-84368

O.C.A. Number  
744483

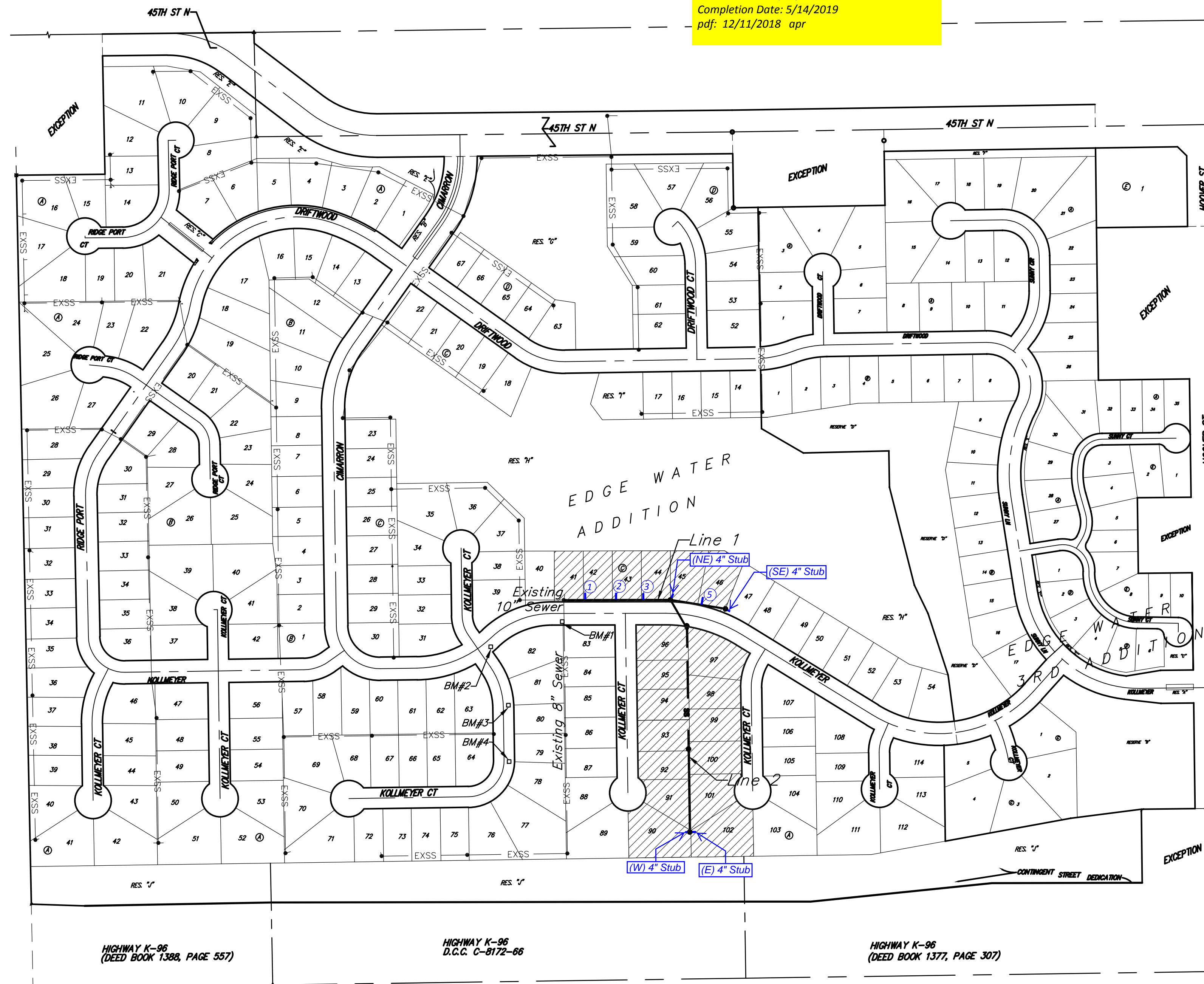
Mies Construction - Contractor  
 B. Woods - City of Wichita, Field Project Engineer  
 S. Stripling - City of Wichita, Inspector  
 As-built  
 Stubs & Risers  
 Release Date: 11/26/2018  
 Completion Date: 5/14/2019  
 pdf: 12/11/2018 apr



## Vicinity Map

## Sheet Index

Title Sheet	1
Line 1	2
Line 2	3
Erosion Control/Grading Plan	4
Precast SS Manhole Detail	5
Manhole Frame & Cover Detail	6
Vertical Riser Detail	7
Erosion Control BMP Details	8-12
Coordinate Sheet	13
Copy of Plat	14-15



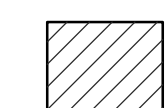
HIGHWAY K-96  
(DEED BOOK 1368, PAGE 557)

HIGHWAY K-96  
D.C.C. C-8172-86

HIGHWAY K-96  
(DEED BOOK 1377, PAGE 307)

September 2018

Benefit District



Baughman Company, P.A. 315 Ellis St. Wichita, KS 67211 P 316-262-7271 F 316-262-0148  
 ENGINEERING | SURVEYING | PLANNING | LANDSCAPE ARCHITECTURE

G:\Projects\Edgewater Addition\Phase 2\SS\_1804\961\SS.dwg

**BENCHMARKS:**  
 BM #1: Crows foot cut at SE corner of curb inlet south side of Kollmeyer near NE corner of Lot 82, Block A, Edge Water Addition.  
 Elev. = 1335.36 NGVD29

BM #2: Brass disc on top of curb by fire hydrant at SE corner of intersection of Kollmeyer and Kollmeyer Ct. (Lots 63-82, Block A) at the NW corner of Lot 82, Block A, Edge Water Addition.  
 Elev. = 1336.61 NGVD29

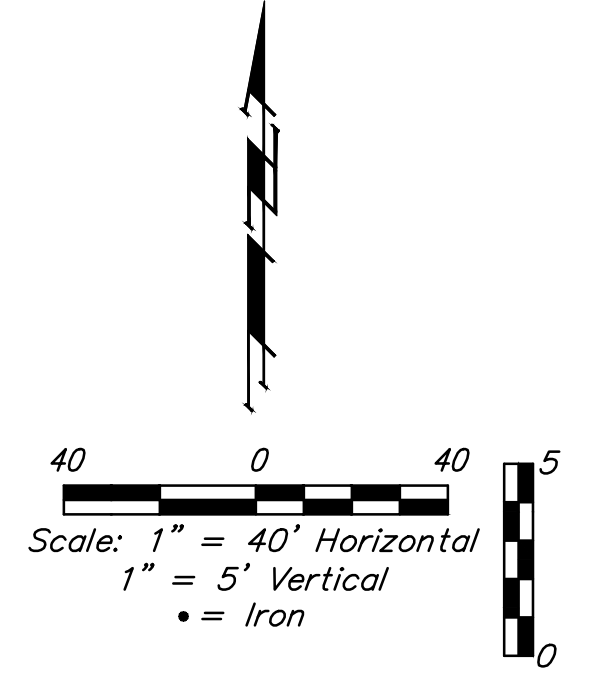
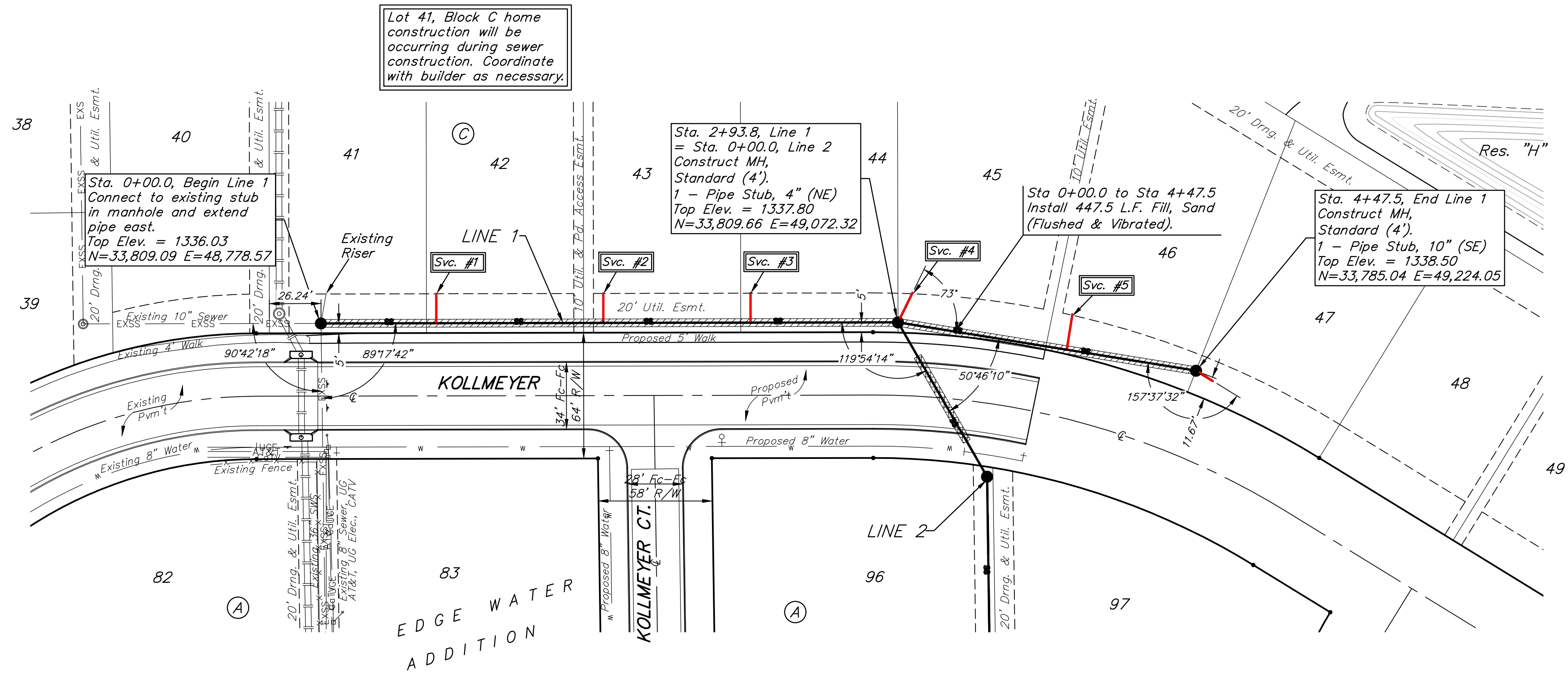
BM #3: "□" on Top of Curb, east side of Kollmeyer Ct. (Lots 63-82, Block A) near NW Corner of Lot 80, Block A, Edge Water Addition.  
 Elev. = 1333.99 NGVD29

BM #4: "□" on Top of Curb, east side of Kollmeyer Ct. (Lots 63-82, Block A) near NW Corner of Lot 78, Block A, Edge Water Addition.  
 Elev. = 1334.26 NGVD29

All trench and manhole excavation areas from Sta. 0+00 to Sta. 4+47.5, Line 1 shall be backfilled with sand. The sand backfill shall be within two feet of existing grade and shall be water-jetted and vibrated during backfilling. All costs shall be paid for as L.F. "Fill, Sand (Flushed & Vibrated)".

Construction area is full of trees. Contractor to remove and dispose of trees only as necessary for construction. Cost for tree removal and disposal to be included in Site Clearing" bid item.

Lot 41, Block C home construction will be occurring during sewer construction. Coordinate with builder as necessary.

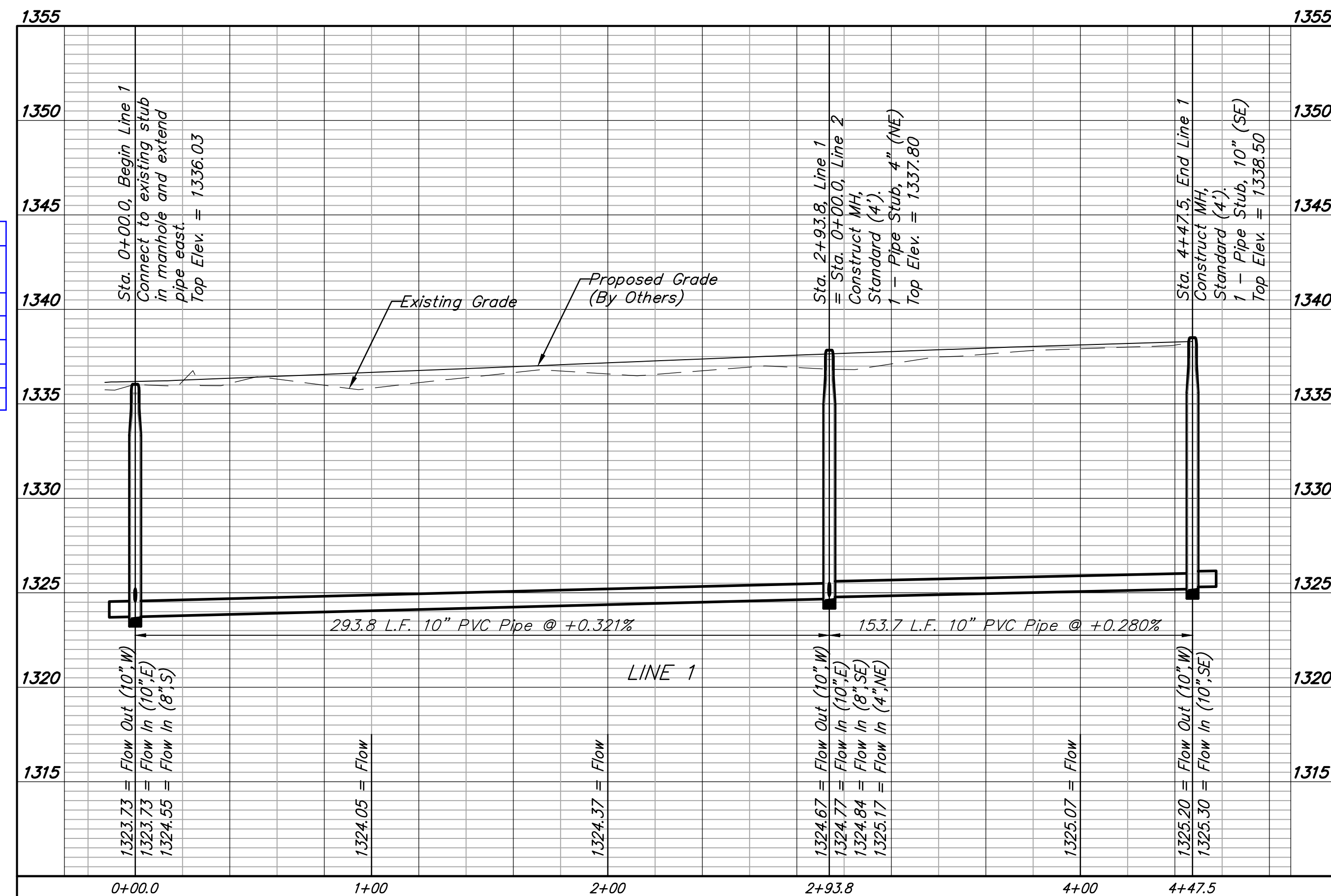


**SEWER SERVICE TABLE**

NUMBER	TYPE	LOCATION				FOR INFORMATION ONLY		Distance from Main to Riser	Distance from	
		LOT NO.	BLOCK NO.	LINE NO.	STATION \ DIRECTION	APPROXIMATE LENGTH 4" PIPE			USMH	DSMH
						VERTICAL	HORIZONTAL			
1	8" X 4" Tee W/Riser	42	C	1	0+58.8/Lt.	8.5'	15.0'	15' Lt.	235'	59'
2	8" X 4" Tee W/Riser	43	C	1	1+43.8/Lt.	8.5'	15.0'	15' Lt.	150'	144'
3	8" X 4" Tee W/Riser	44	C	1	2+18.8/Lt.	9.0'	15.0'	15' Lt.	75'	219'
4	4" Stub W/Riser	45	C	1	2+93.8/Lt.	9.0'	15.0'	15' Lt.	@ MH	NE
5	8" X 4" Tee W/Riser	46	C	1	3+80.8/Lt.	9.0'	15.0'	15' Lt.	95'	87'

NOTE: Vertical Riser Pipe shall be extended to 2' minimum above ground water elevation and 4' maximum below proposed ground elevation.

Contractor shall verify elevation and alignment of existing 10" pipe prior to construction and notify Engineer of any discrepancy.



**BENCHMARKS:**  
 BM #1: Crows foot cut at SE corner of curb inlet south side of Kollmeyer near NE corner of Lot 82, Block A, Edge Water Addition.  
 Elev. = 1335.36 NGVD29

BM #2: Brass disc on top of curb by fire hydrant at SE corner of intersection of Kollmeyer and Kollmeyer Ct. (Lots 63-82, Block A) at the NW corner of Lot 82, Block A, Edge Water Addition.  
 Elev. = 1336.61 NGVD29

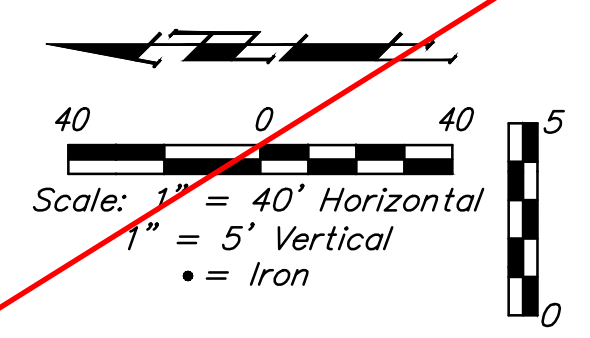
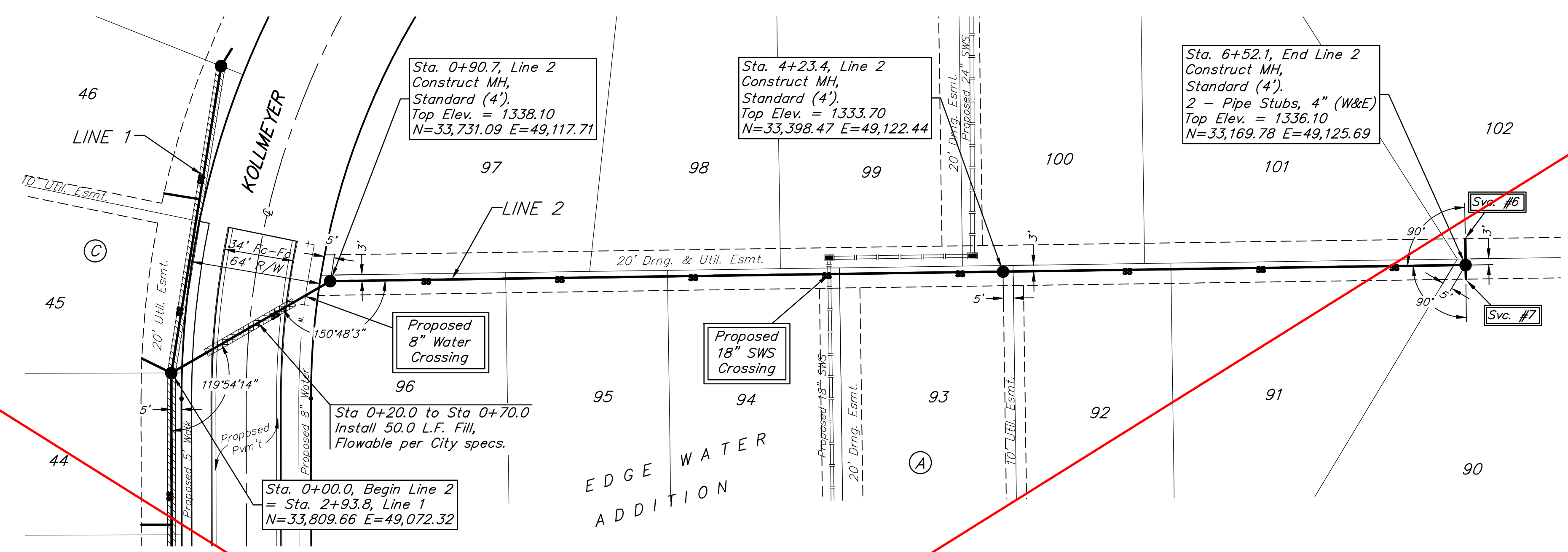
BM #3: "□" on Top of Curb, east side of Kollmeyer Ct. (Lots 63-82, Block A) near NW Corner of Lot 80, Block A, Edge Water Addition.  
 Elev. = 1333.99 NGVD29

BM #4: "□" on Top of Curb, east side of Kollmeyer Ct. (Lots 63-82, Block A) near NW Corner of Lot 78, Block A, Edge Water Addition.  
 Elev. = 1334.26 NGVD29

**SEWER SERVICE TABLE**

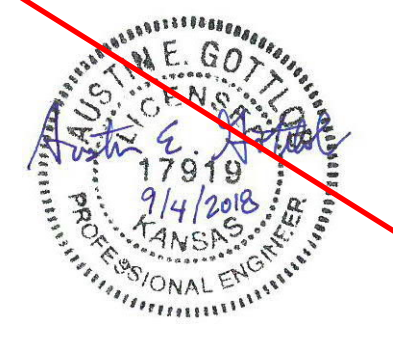
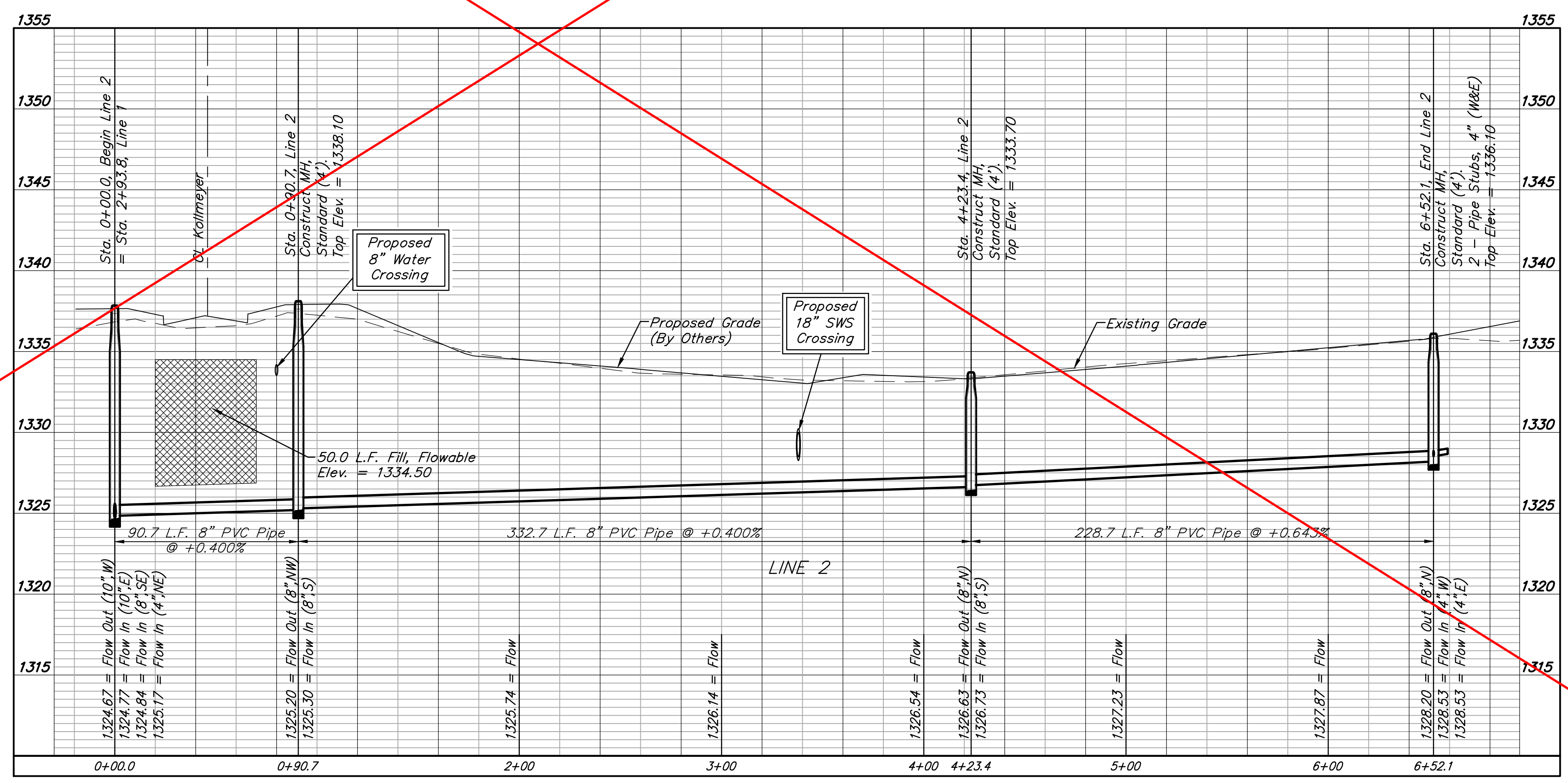
NUMBER	TYPE	LOCATION				FOR INFORMATION ONLY	
		LOT NO.	BLOCK NO.	LINE NO.	STATION \ DIRECTION	APPROXIMATE LENGTH 4" PIPE	VERTICAL
6	4" Stub	102	A	2	6+52.1/Lt.	-	13.0'
7	4" Stub	90	A	2	6+52.1/Rt.	-	7.0'

NOTE: Vertical Riser Pipe shall be extended to 2' minimum above ground water elevation and 4' maximum below proposed ground elevation.



SEE REVISED SHEET

Construction area is full of trees. Contractor to remove and dispose of trees only as necessary for construction. Cost for tree removal and disposal to be included in Site Clearing" bid item.



**BENCHMARKS:**  
 BM #1: Crows foot cut at SE corner of curb inlet south side of Kollmeyer near NE corner of Lot 82, Block A, Edge Water Addition.  
 Elev. = 1335.36 NGVD29

BM #2: Brass disc on top of curb by fire hydrant at SE corner of intersection of Kollmeyer and Kollmeyer Ct. (Lots 63-82, Block A) at the NW corner of Lot 82, Block A, Edge Water Addition.  
 Elev. = 1336.61 NGVD29

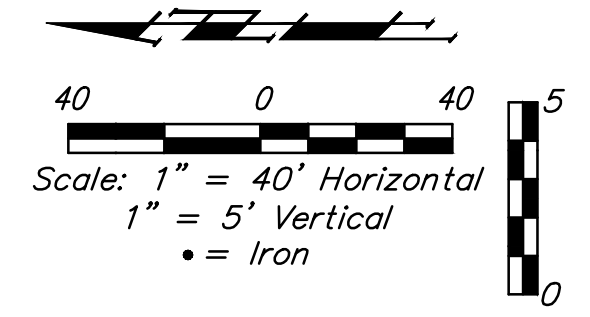
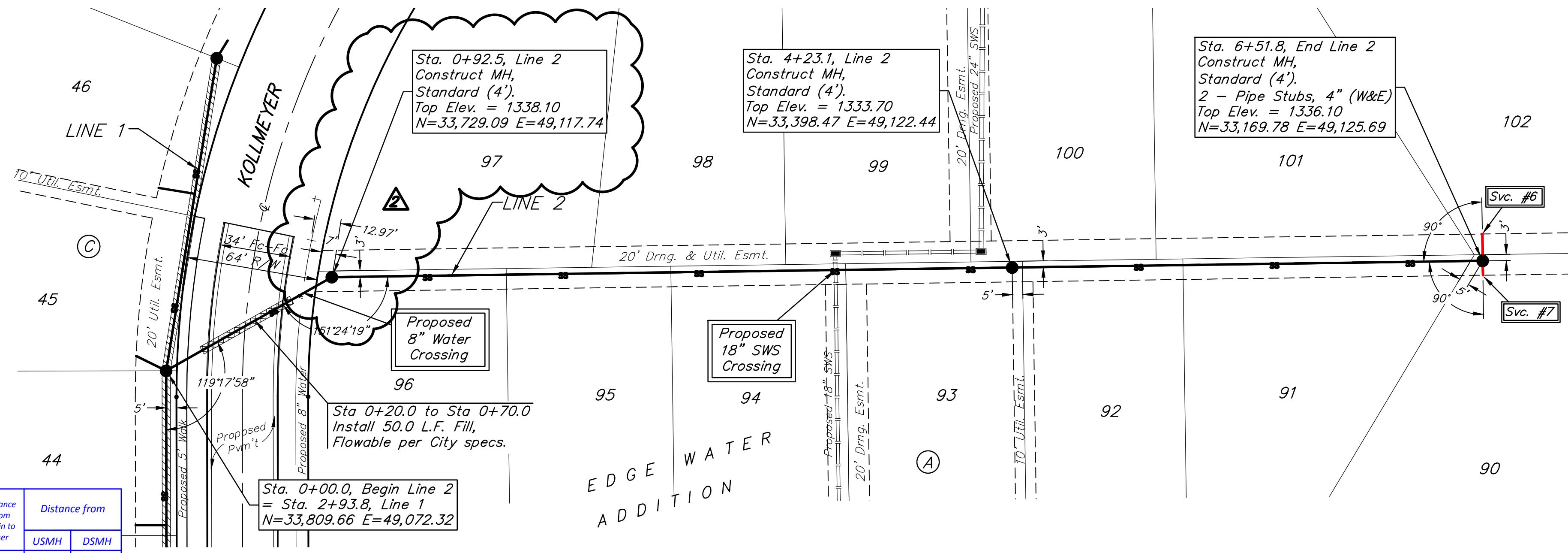
BM #3: "□" on Top of Curb, east side of Kollmeyer Ct. (Lots 63-82, Block A) near NW Corner of Lot 80, Block A, Edge Water Addition.  
 Elev. = 1333.99 NGVD29

BM #4: "□" on Top of Curb, east side of Kollmeyer Ct. (Lots 63-82, Block A) near NW Corner of Lot 78, Block A, Edge Water Addition.  
 Elev. = 1334.26 NGVD29

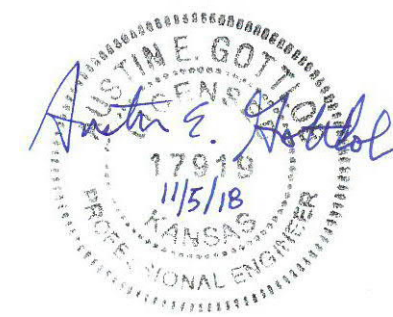
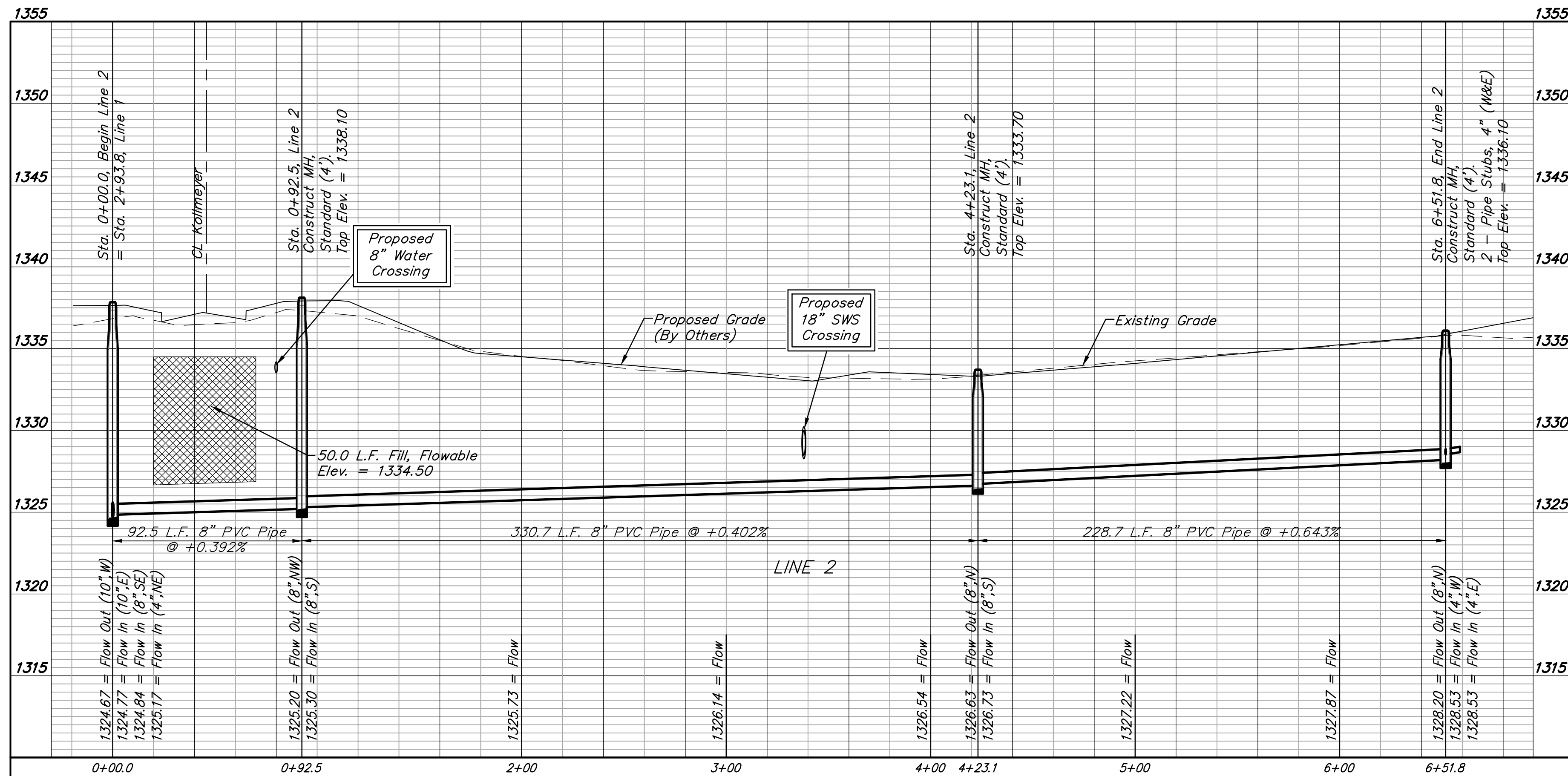
**SEWER SERVICE TABLE**

NUMBER	TYPE	LOCATION			FOR INFORMATION ONLY		Distance from	
		LOT NO.	BLOCK NO.	LINE NO.	STATION \ DIRECTION	APPROXIMATE LENGTH 4" PIPE VERTICAL HORIZONTAL	USMH	DSMH
6	4" Stub	102	A	2	6+51.8/Lt.	-	13.0'	13' Lt. @ MH East
7	4" Stub	90	A	2	6+51.8/Rt.	-	7.0'	7' Rt. @ MH West

NOTE: Vertical Riser Pipe shall be extended to 2' minimum above ground water elevation and 4' maximum below proposed ground elevation.



Construction area is full of trees. Contractor to remove and dispose of trees only as necessary for construction. Cost for tree removal and disposal to be included in Site Clearing" bid item.

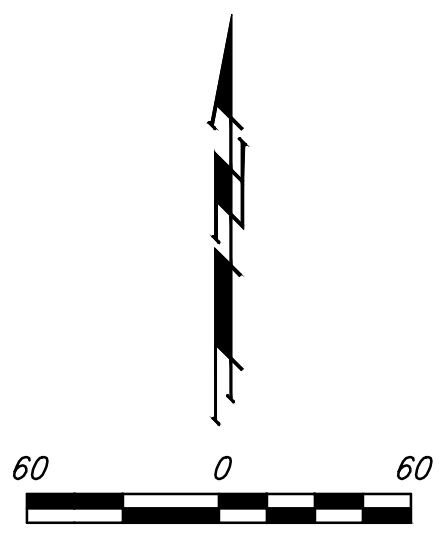
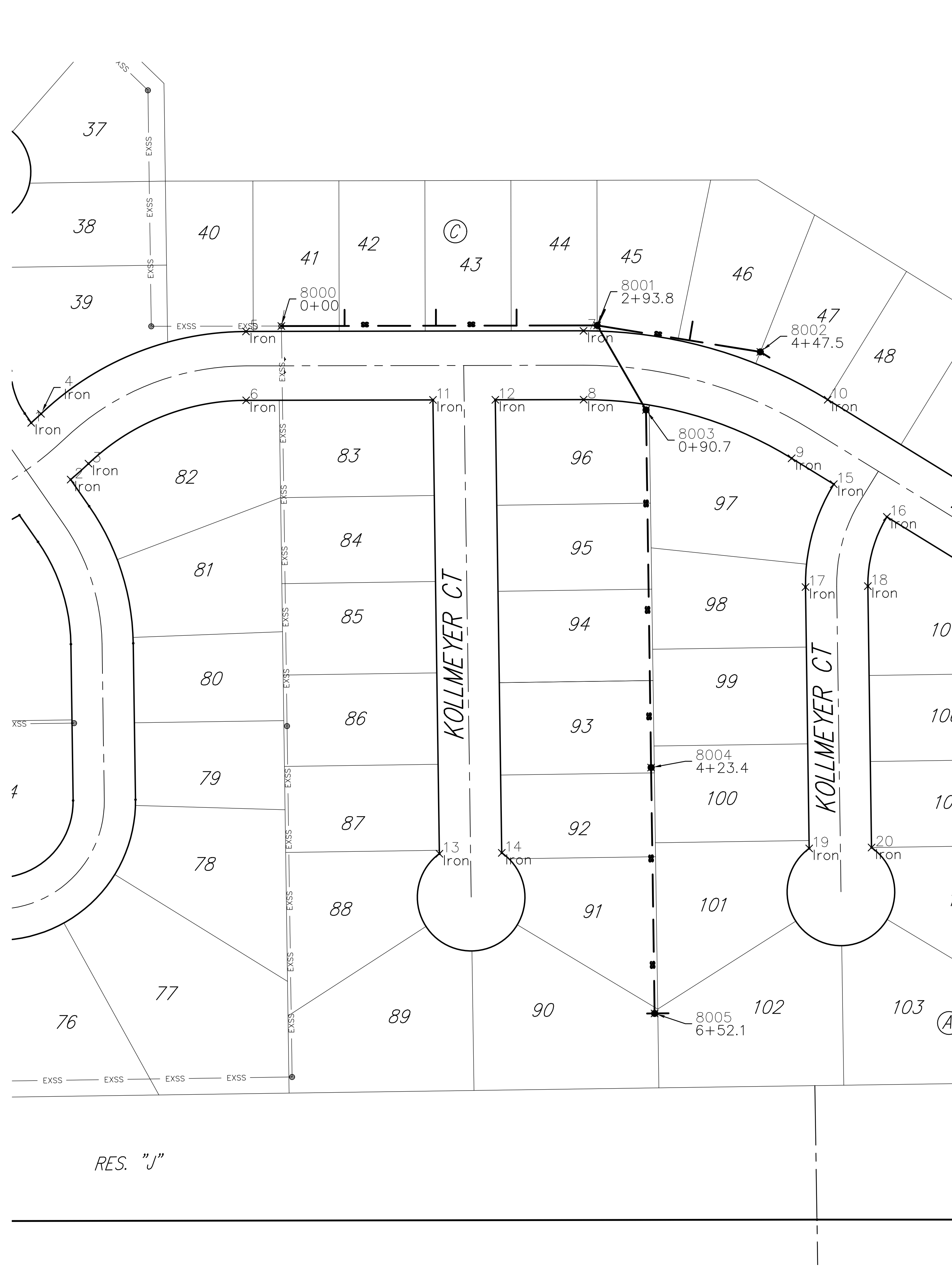


IRONS

Point Table			
Point #	Northing	Easting	Raw Description
1	33719.11	48545.83	Iron
2	33666.31	48582.54	Iron
3	33681.13	48599.15	Iron
4	33727.43	48554.96	Iron
5	33804.03	48745.67	Iron
6	33740.03	48745.79	Iron
7	33804.63	49059.60	Iron
8	33740.63	49059.72	Iron
9	33686.10	49253.21	Iron
10	33740.62	49286.74	Iron
11	33740.36	48919.56	Iron
12	33740.48	48977.56	Iron
13	33318.31	48925.56	Iron
14	33319.14	48983.55	Iron
15	33662.00	49292.39	Iron
16	33631.62	49341.80	Iron
17	33566.35	49266.07	Iron
18	33567.18	49324.06	Iron
19	33323.28	49269.52	Iron
20	33324.11	49327.52	Iron

SANITARY SEWER

Point Table			
Point #	Northing	Easting	Raw Description
8000	33809.09	48778.57	0+00
8001	33809.66	49072.32	2+93.8
8002	33785.04	49224.05	4+47.5
8003	33731.09	49117.71	0+90.7
8004	33398.47	49122.44	4+23.4
8005	33169.78	49125.69	6+52.1



Baughman Company, P.A.  
 114 E. W. 10th St., Suite 1000, Kansas City, MO 64105  
 ENGINEERING, ARCHITECTURE, PLANNING, LANDSCAPE ARCHITECTURE  
 Baughman  
 Date: 07/18 Approval: [Signature]

EDGE WATER ADD. - PH. II  
**COORDINATE SHEET**  
 SANITARY SEWER IMPROVEMENTS





