

PAVING AND INCIDENTAL DRAINAGE IN PINE MEADOW ADDITION

AN ADDITION TO THE CITY OF WICHITA
SEDGWICK COUNTY, KANSAS

PROJECT NO. 472-83458

NEIL D. CABLE, CITY ENGINEER

OCA 765803

GENERAL NOTES

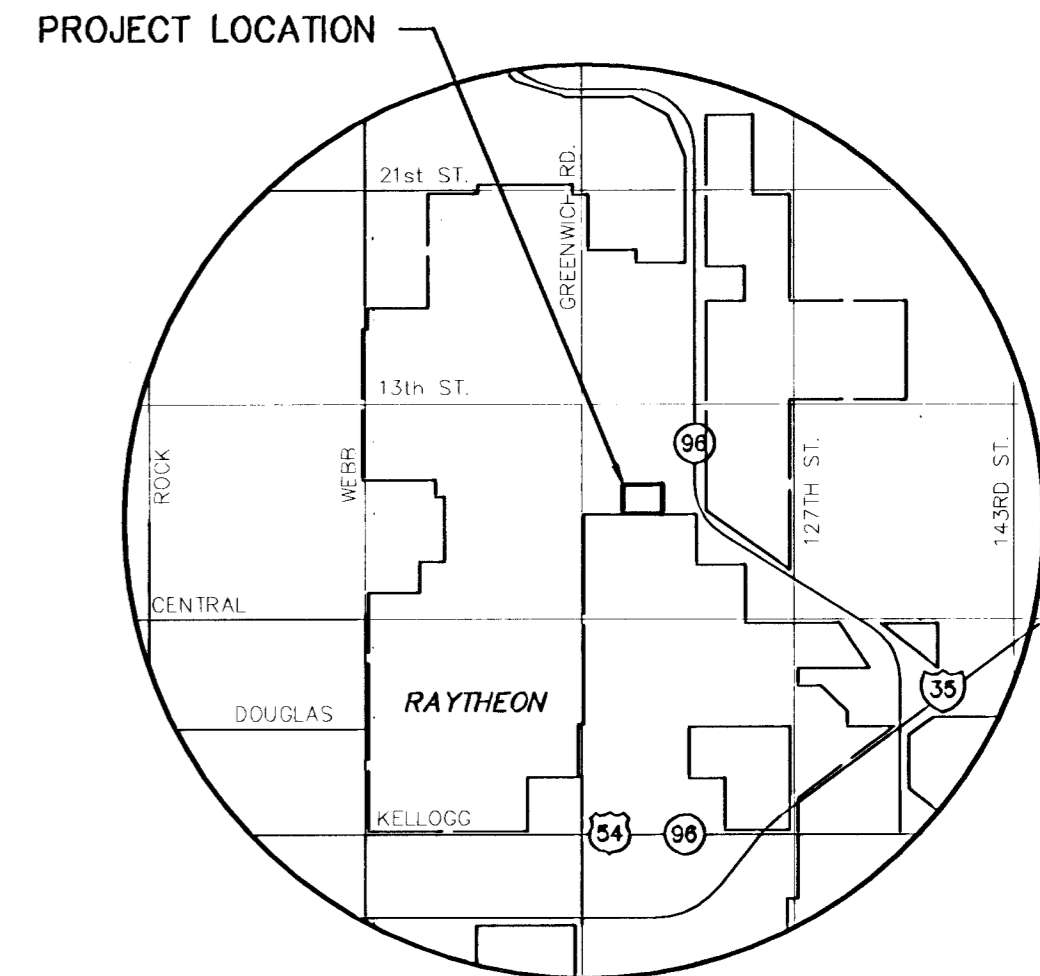
1. UNLESS SHOWN OR STATED OTHERWISE ON THESE DRAWINGS, MATERIALS AND CONSTRUCTION SHALL BE IN ACCORDANCE WITH CITY OF WICHITA CONCRETE PAVEMENT AND ASPHALTIC CONCRETE PAVEMENT SPECIFICATIONS.
2. THE CONTRACTOR SHALL BE RESPONSIBLE FOR PRESERVING PROPERTY IRONS. THE CONTRACTOR WILL BE REQUIRED TO RE-ESTABLISH ANY PROPERTY IRONS WHICH ARE DAMAGED OR DESTROYED BY HIS CONSTRUCTION OPERATIONS. SUCH IRONS SHALL BE RE-ESTABLISHED BY A LICENSED LAND SURVEYOR IN ACCORDANCE WITH STATE LAWS.
3. TRANSITION CURB FROM FULL HEIGHT COMBINATION CURB AND GUTTER TO ROLL TYPE COMBINATION CURB AND GUTTER IS TO BE PAID AS BID FOR LINEAL FEET COMBINED CURB AND GUTTER (3 5/8" ROLL).
4. EXISTING UTILITIES AND THEIR LOCATIONS, AS SHOWN ON THE PLANS REPRESENT THE BEST INFORMATION OBTAINABLE FOR DESIGN. LOCATION INFORMATION HAS BEEN OBTAINED FROM THE VARIOUS UTILITY COMPANIES AND IS EITHER FROM COMPANY RECORD DRAWINGS OR COMPANY PROVIDED FIELD LOCATIONS. THE PLAN LOCATIONS SHOWN ARE NOT GUARANTEED. ADDITIONAL EXISTING UTILITIES MAY ALSO BE ENCOUNTERED.
5. CONTRACTOR WILL BE REQUIRED TO PROVIDE A MINIMUM ADVANCE NOTICE OF FORTY-EIGHT (48) HOURS TO UTILITY COMPANIES PRIOR TO STARTING ANY EXCAVATION AS FOLLOWS:

| | |
|-----------------|-----------------------------|
| KANSAS ONE-CALL | 1-800-344-7233 |
| | OR 687-2470 (LOCAL WICHITA) |

THE CONTRACTOR MUST NOTIFY THE FOLLOWING IN CASE OF AN EMERGENCY:

| | |
|--------------------------------------|----------------|
| SOUTHWESTERN BELL TELEPHONE COMPANY | 1-800-734-7590 |
| COX CABLEVISION | 282-0861 |
| K&E (ELECTRIC) | 383-8600 |
| KANSAS GAS SERVICE | 383-8600 |
| CITY OF WICHITA WATER & SEWER MAINT. | 282-6000 |
| PEOPLES NATURAL GAS | 1-800-303-0357 |
6. RUBBLE FROM THE REMOVAL OF MISCELLANEOUS STRUCTURES AND EXCESS EXCAVATION WHICH IS TO BE WASTED SHALL BE DISPOSED OF ON SITES TO BE PROVIDED BY THE CONTRACTOR. THESE SITES SHALL BE APPROVED BY THE ENGINEER AS TO SUITABILITY, APPEARANCE AND SITE LOCATION. LOCATIONS THAT, IN THE OPINION OF THE ENGINEER, WILL LEAVE AN UNSIGHTLY APPEARANCE WILL NOT BE APPROVED. ALL DISPOSAL SITES MUST BE APPROVED BY THE KANSAS DEPARTMENT OF HEALTH AND ENVIRONMENT. MATERIAL EITHER STOCKPILED OR DISPOSED OF IN A FLOOD PLAIN WOULD REQUIRE A KANSAS STATE BOARD OF AGRICULTURE PERMIT. ANY MATERIAL DUMPED IN WATERS OF THE UNITED STATES OR WETLANDS IS SUBJECT TO U.S. CORPS OF ENGINEERS PERMITTING REGULATIONS. ANY MATERIAL BURIED OR STOCKPILED BEYOND APPROVED CONSTRUCTION LIMITS WOULD REQUIRE ADDITIONAL ARCHAEOLOGICAL INVESTIGATIONS UNLESS BURIED IN A PREVIOUSLY APPROVED BORROW LOCATION.
7. THIS PROJECT INCLUDES A CERTAIN AMOUNT OF ROLL TYPE CURB CONSTRUCTION. ROLL CURBS SHALL BE DEPRESSED THROUGH ALL DRIVEWAY OPENINGS WHEN SUCH DRIVES ARE CONSTRUCTED AS A PART OF THE PROJECT. NO MORE THAN 2 DRIVES 20 FEET IN WIDTH OR EQUIVALENT COMBINATIONS THEREOF ARE TO BE CONSTRUCTED WITH THIS PROJECT.
8. A SAW CUT OF AT LEAST ONE-HALF THE DEPTH OF THE EXISTING SURFACE COURSES OR ONE-FOURTH THE DEPTH OF THE EXISTING TOTAL PAVEMENT THICKNESS SHALL BE PROVIDED AT LOCATIONS WHERE PROPOSED CONSTRUCTION ABUTS AN EXISTING SURFACE OR PAVEMENT FOR WHICH PARTIAL REMOVAL OF THAT SURFACE OR PAVEMENT IS REQUIRED. SAW JOINT TO FACILITATE REMOVAL WITHIN THREE (3) FEET OF EXISTING JOINTS WILL NOT BE PERMITTED AND FOR SUCH INSTANCES THE LIMITS OF REMOVAL SHALL EXTEND TO THE EXISTING JOINT. SUCH SAW CUTS WILL NOT BE PAID FOR DIRECTLY AND THIS COST SHALL BE CONSIDERED AS SUBSIDIARY TO THE REMOVAL OF SURFACE OR PAVEMENT.
9. ALL AREAS DISTURBED SHALL BE SEED AS FOLLOWS:
K-31 FESCUE AT A RATE OF 300 LBS./ACRE.

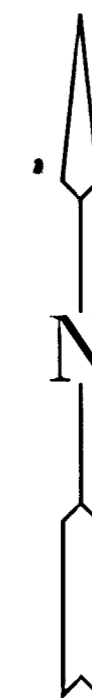
THIS AREA SHALL BE FINE GRADED AND SURFACE SHALL BE FREE FROM STICKS, SMALL STONES, AND OTHER EXTRANEIOUS MATERIALS. COST SHALL BE CONSIDERED SUBSIDIARY TO SITE RESTORATION.
10. CONTRACTOR SHALL RESTORE BACKYARD EASEMENTS TO FINAL GRADE. COST SHALL BE SUBSIDIARY TO PROJECT.
11. CONTRACTOR SHALL MAINTAIN & RESTORE EXISTING EROSION CONTROL. COST SHALL BE SUBSIDIARY TO PROJECT.



VICINITY MAP

INDEX TO DRAWINGS

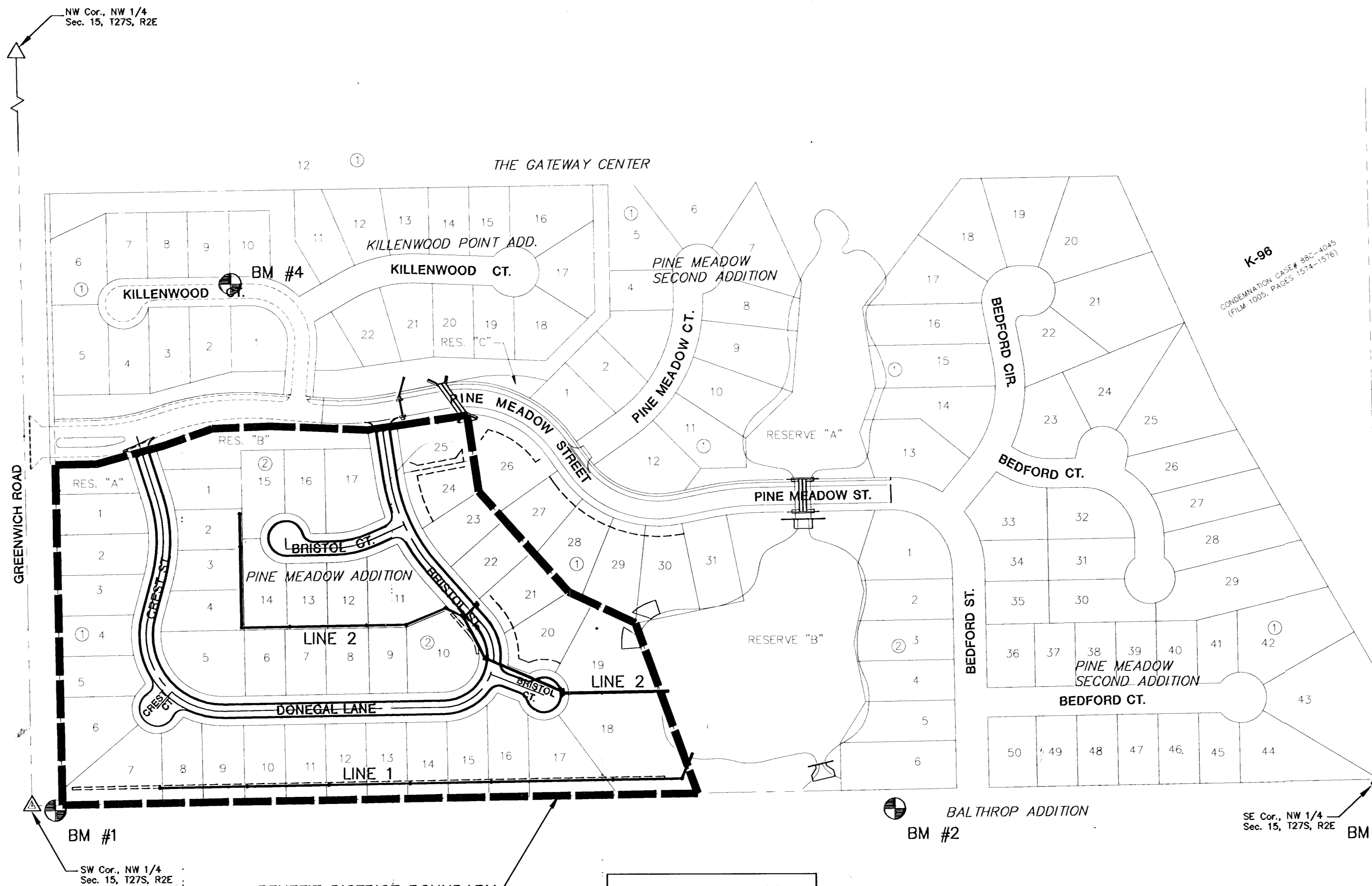
| SHEET NO. | DESCRIPTION |
|-----------|---------------------|
| 1 | TITLE SHEET |
| 2 | TYP. PAVING SECTION |
| 3-4 | PAVING DETAILS |
| 5 | SIGNING DETAILS |
| 6-9 | PAVING PLANS |
| 10-11 | STORM SEWER DETAILS |
| 12-17 | SWS PLAN & PROFILE |
| 18 | EASEMENT GRADING |
| 19-22 | BMP DETAILS |
| 23-29 | CROSS SECTIONS |
| 30 | FINAL PLAT |



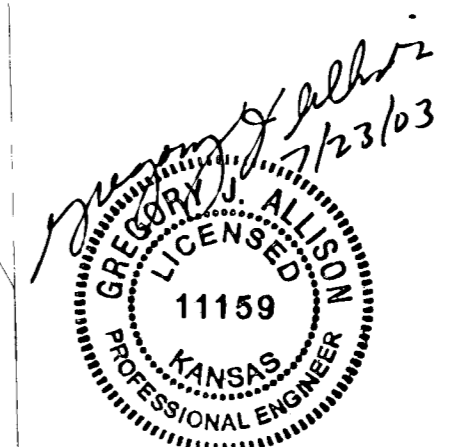
SCALE: 1" = 150'

BENCHMARK

- BM#1 C.O.W. BENCHMARK DISC, 48" EAST AND 4'-SOUTH OF THE WEST 1/4 COR. OF SEC. 15, T27S, R2E ELEV. = 1389.18
- BM#2 RR SPIKE IN THE SOUTH FACE OF 28" HEDGE TREE, 110' WEST OF THE NE COR. OF LOT 63, BLOCK 1, BALTHROP ADDITION. ELEV.=1366.91
- BM#3 "U" POST 200' NORTH OF THE CENTER OF SEC. 15, T27S R2E AND 5' WEST OF THE WEST K-96 R/W FENCE. ELEV.=1375.89
- BM#4 "U" CUT T.C. SE CORNER LOT 9, BLK 1 KILLENWOOD POINT ADDITION ELEV. = 1382.02



| EARTHWORK SUMMARY | |
|-------------------|-----------|
| PROJECT LENGTH | 2190 L.F. |
| EXCAVATION | 1021 C.Y. |
| LOOSE FILL | 2711 C.Y. |
| COMPACTED FILL | 458 C.Y. |
| BORROW | 2148 C.Y. |



| | | |
|----------------------------------|------------------|--------------------|
| PINE MEADOW ADDITION | | |
| PROJECT NAME | | |
| PAVING AND DRAINAGE PLANS | | |
| SHEET TITLE | | |
| ASH/BSH DESIGN BY: | JAS DRAWN BY: | ASH CHECKED BY: |
| JULY 2003 DATE | 01077 JOB NO. | 1 / 30 SHEET/OF |