

EASEMENT GRADING DETAILS

= AREAS TO BE GRADED
(AREA SHOWN REPRESENTS DITCH BOTTOM, SIDE SLOPES ARE NOT INCLUDED)

= LOCATION FOR SEDIMENT CONTROL

H.P. = HIGH POINT
M.E. = MATCH EXISTING

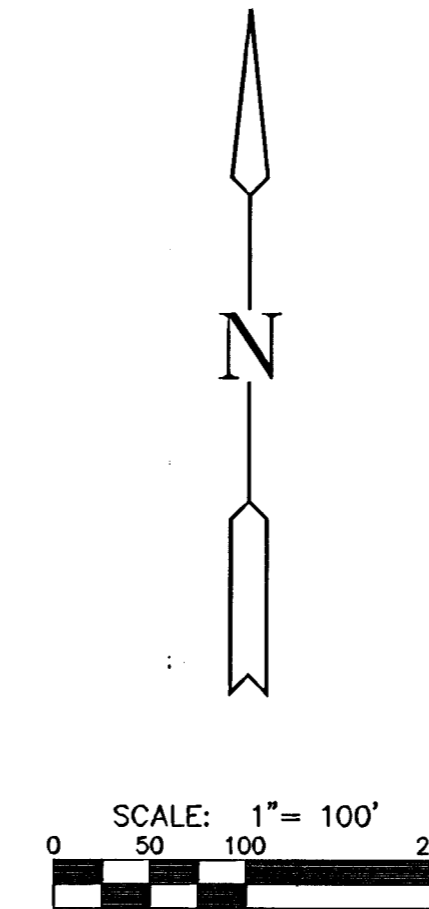
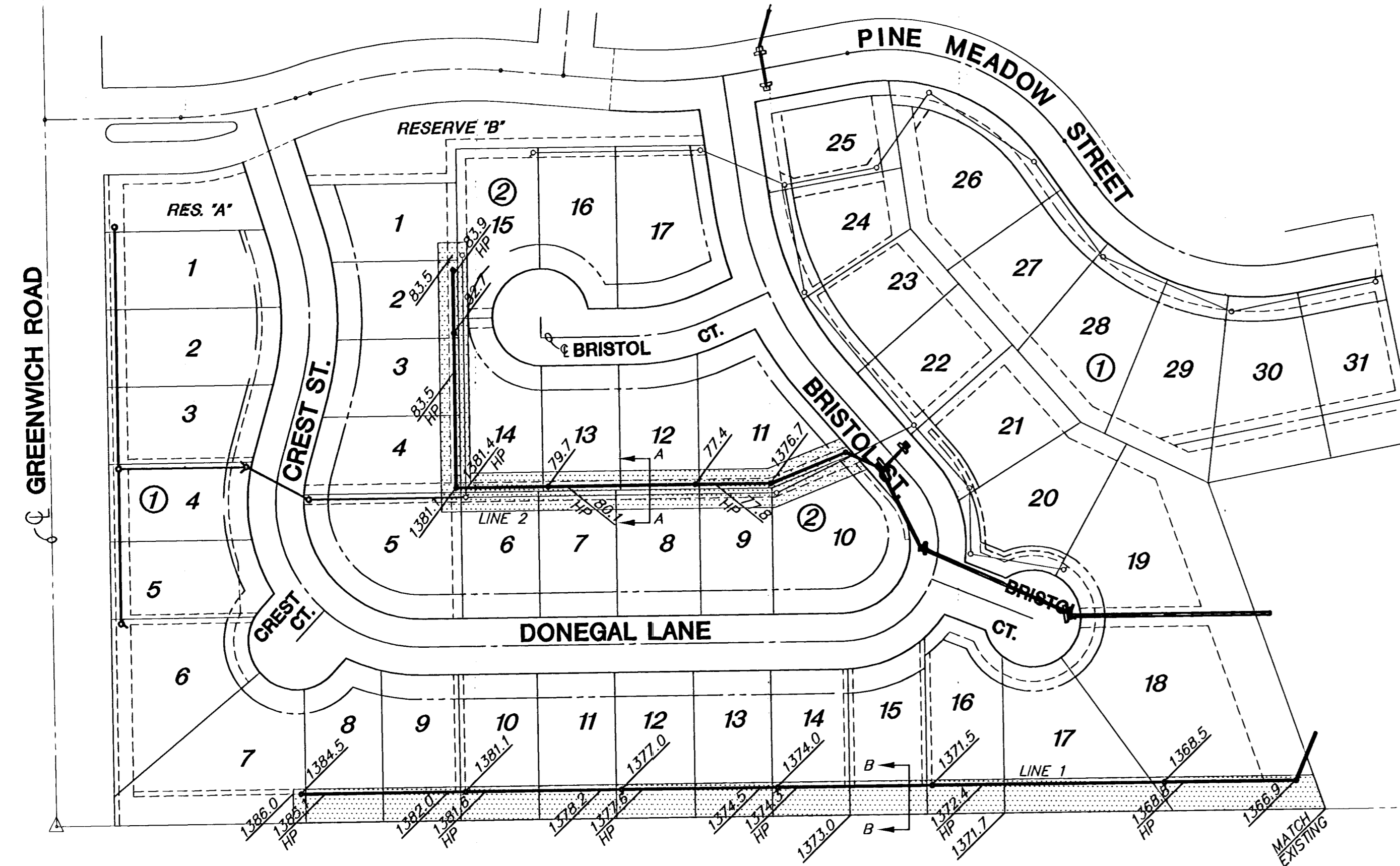
**Graded widths and slopes may vary as approved by the Engineer to minimize conflict with existing trees.

Easement Grading will be bid on a lump sum basis for grading the easements to the profile and elevations shown on the Easement Grading Plan (this sheet). Approximate quantities of earthwork for easement grading are shown below. These approximate quantities are given for information only. The Contractor should verify the quantities when preparing the proposal.

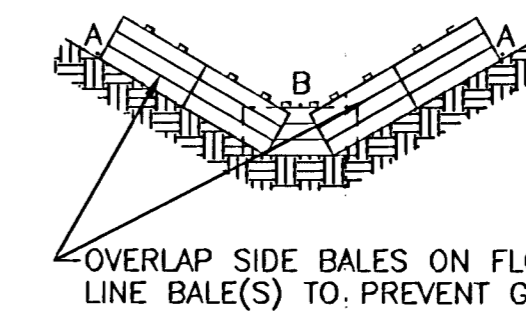
Cut 416 C.Y. (Approximate)

Fill 169 C.Y. (Approximate)

NOTE:
EXCESS EXCAVATION FROM EASEMENT GRADING SHALL BE DISTRIBUTED ON LOTS 7 THRU 12 BLK 2 OF IRONHORSE AT OXFORD ADDITION OR OTHER LOCATION APPROVED BY DEVELOPER. MATERIAL SHALL BE PLACED IN MAX. 9" LIFTS AND COMPACTED TO 95% STANDARD DENSITY. COST SUBSIDIARY TO PROJECT.



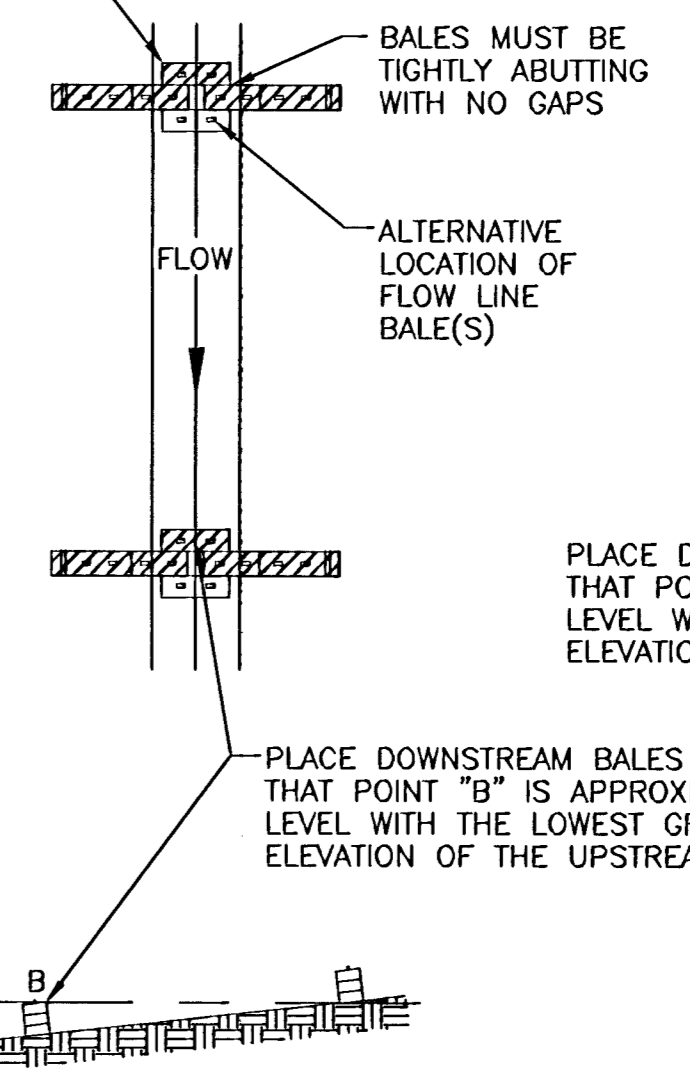
END POINTS "A" MUST BE HIGHER THAN FLOW LINE POINT "B"



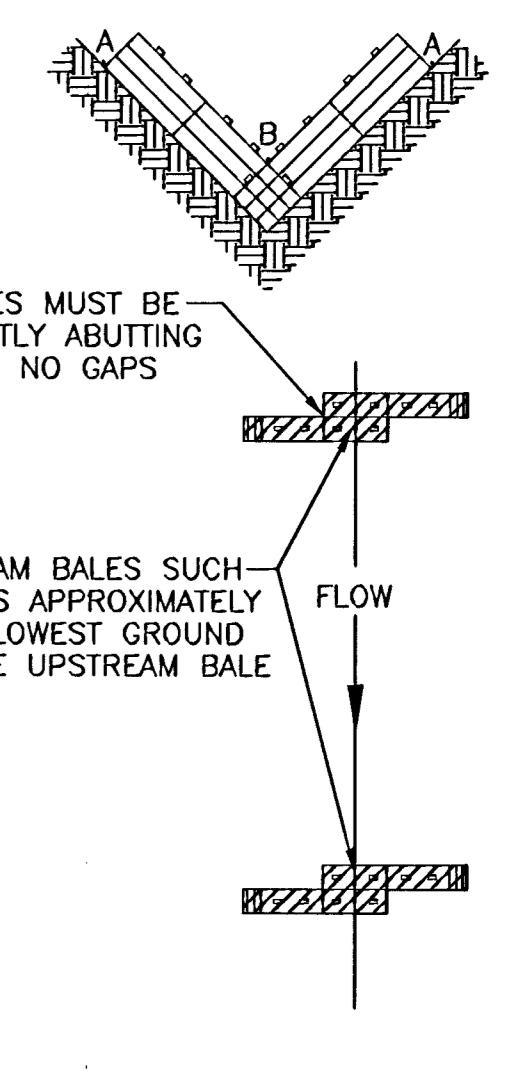
18 INCH BY 36 INCH BALES	VALUE OF Z	MINIMUM NUMBERS OF BALES
	10 OR <	1**
	10-35	2**
	35-50	3**
	50-70	4**
	70 OR >	NOT RECOMMENDED

** ASSUMES DEPTH OF WATER ABOVE POINT "B" WILL NOT EXCEED 6 INCHES

OVERLAP SIDE BALES ON FLOW LINE BALES TO PREVENT GAPS



END POINTS "A" MUST BE HIGHER THAN FLOW LINE POINT "B"

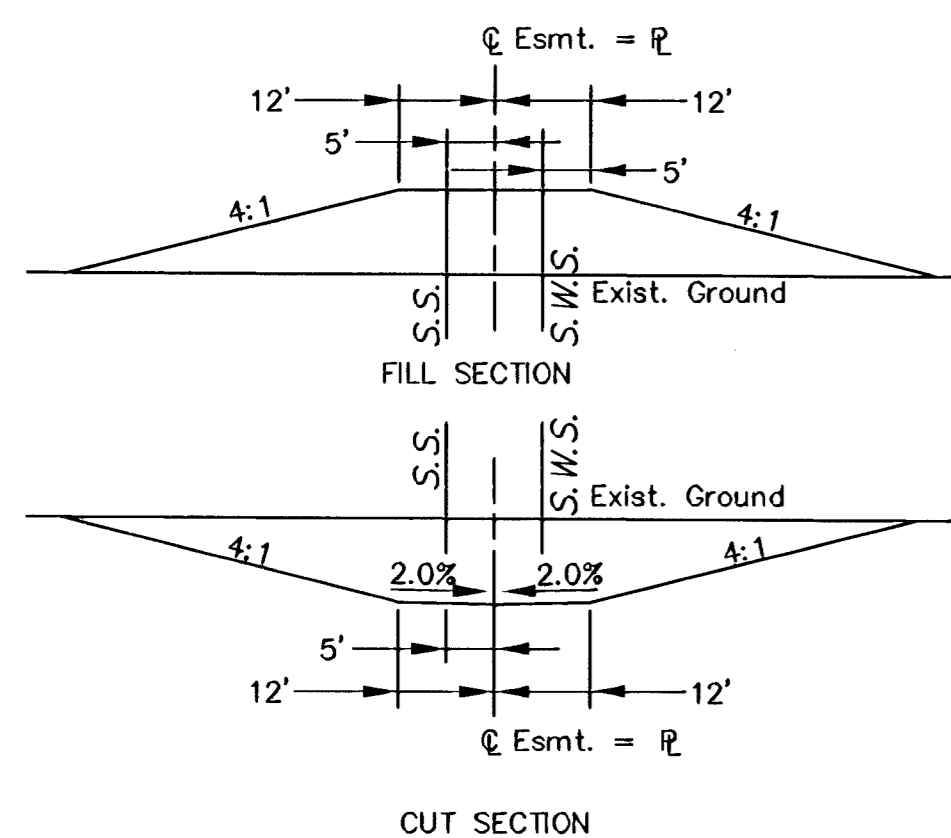


WIDE CHANNELS

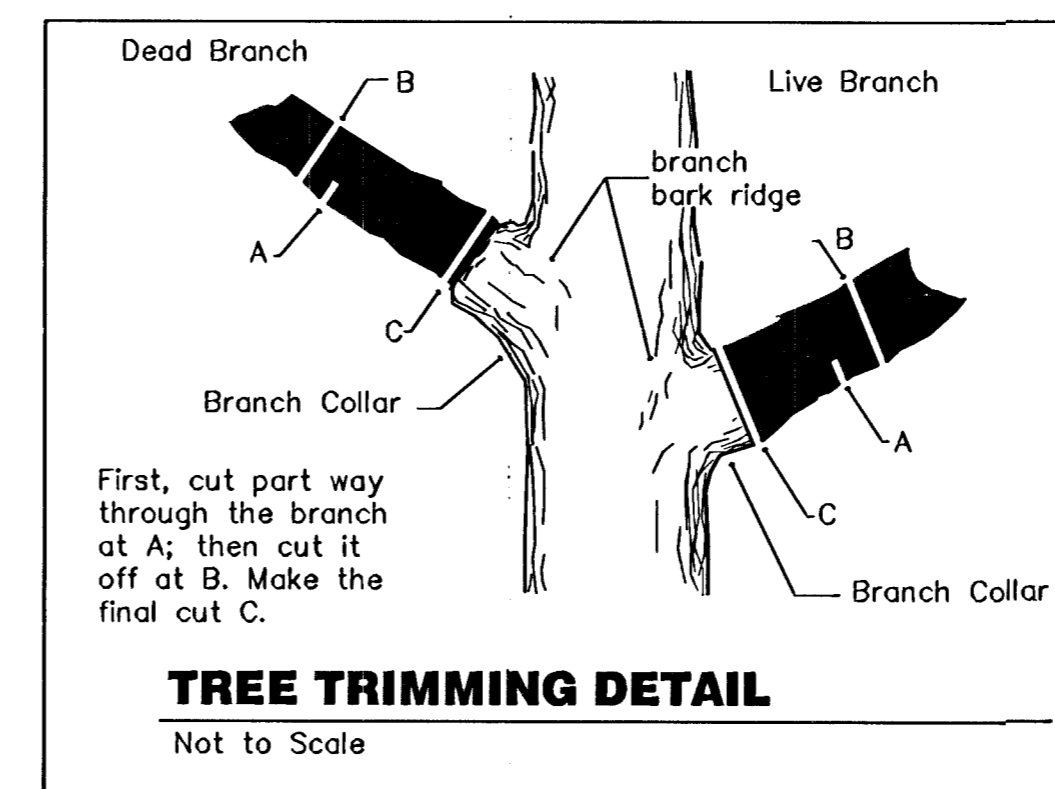
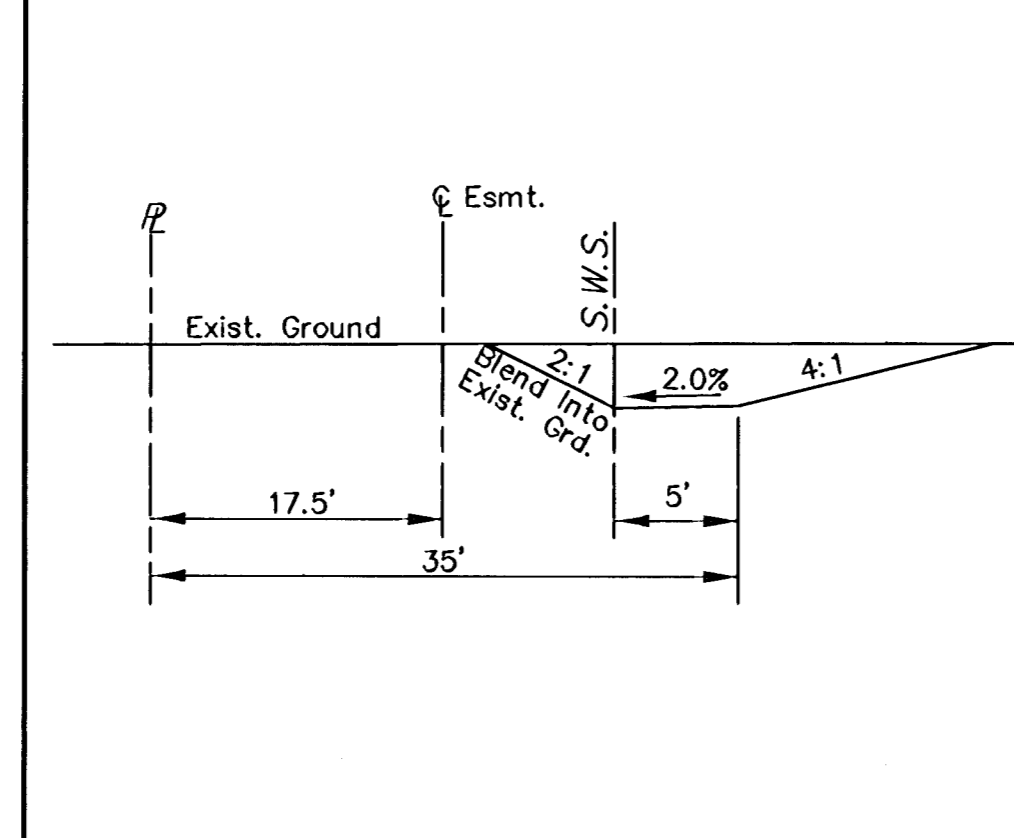
NARROW CHANNELS

STRAW BALE DIKES FOR EASEMENT GRADING

EASEMENT GRADING SECTION A-A



EASEMENT GRADING SECTION B-B



MKEC
ENGINEERING CONSULTANTS
411 N. WEBB ROAD
WICHITA, KS. 67206
316 - 684 - 9600

PINE MEADOW ADDITION
PROJECT NAME

EASEMENT GRADING DETAILS
SHEET TITLE

DESIGN BY: BSH DRAWN BY: JWS CHECKED BY: ASH

DATE: JULY 2003 JOB NO.: 01077 SHEET/OF: 18 / 30