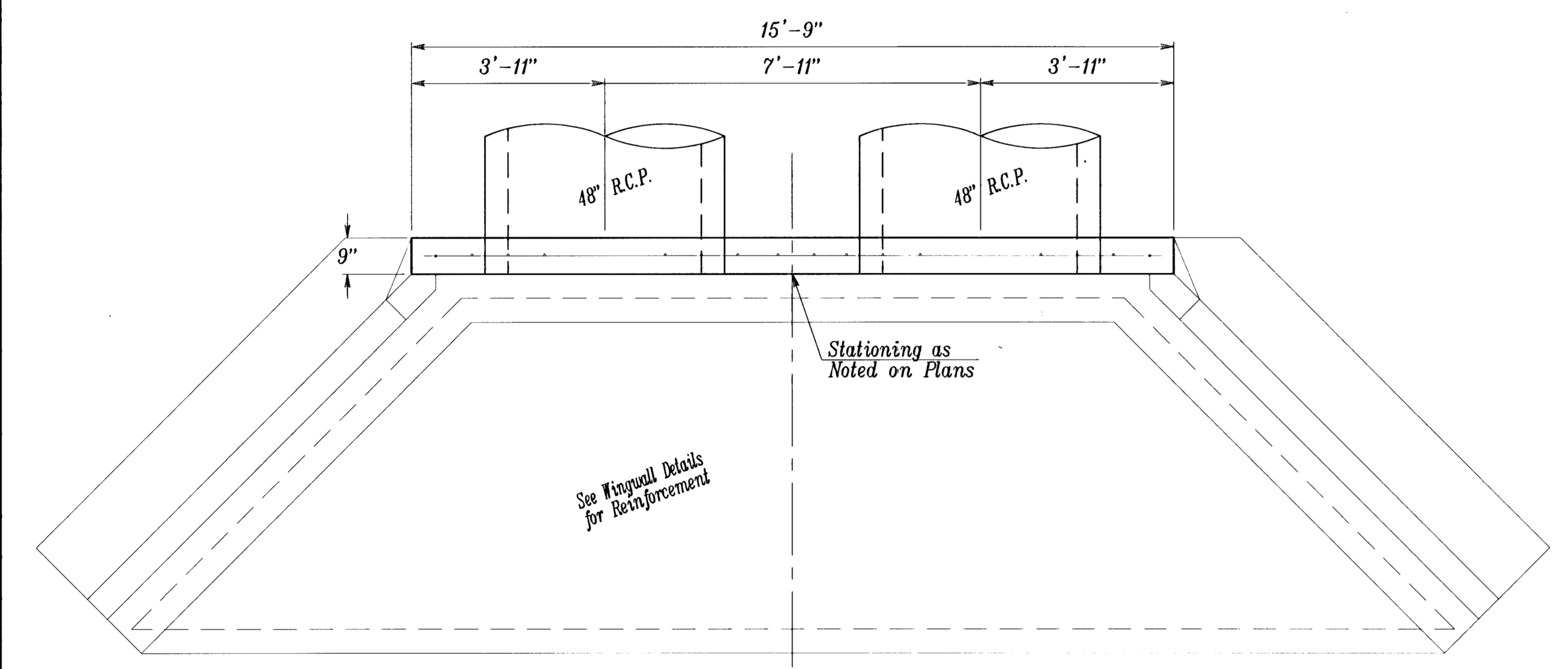
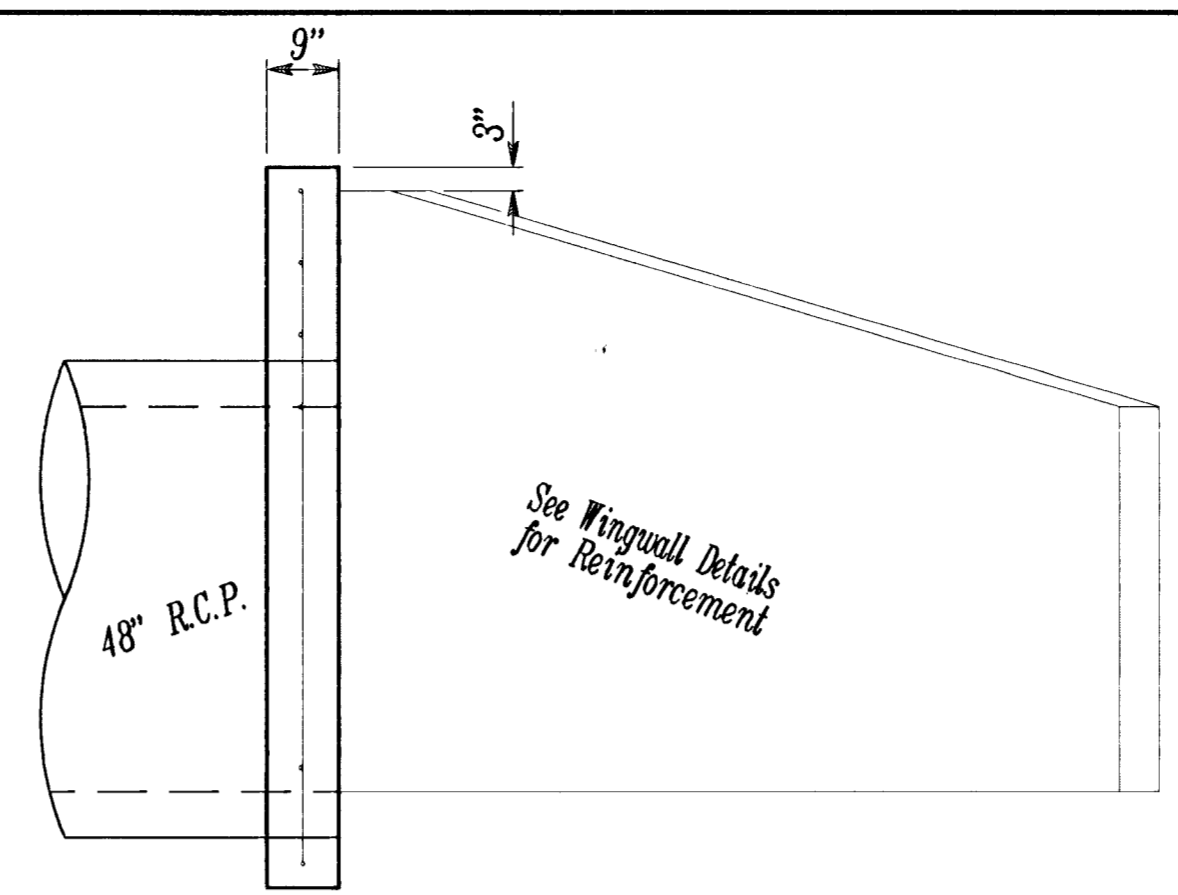


FRONT

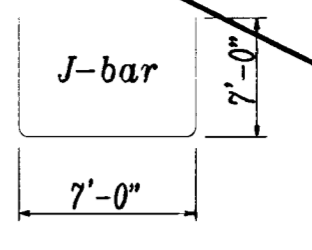


PLAN



SECTION

BENDING DIAGRAM

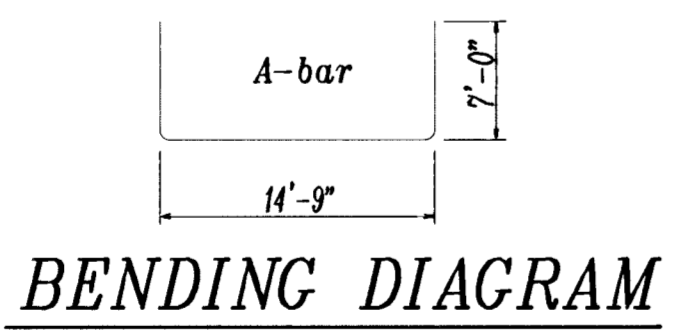


48" HEADWALL RE-BAR SCHEDULE				
Mark	Shape	No.	Length	Weight
J		1	21'-0"	14.45
K		6	6'-9"	14.19
L		3	7'-6"	15.48
M1		6	3'-8"	5.05
M2		12	2'-4"	6.42
N		8	1'-10"	7.57
Total Rebar			63 Lbs.	
Concrete			2.01 C.Y.	

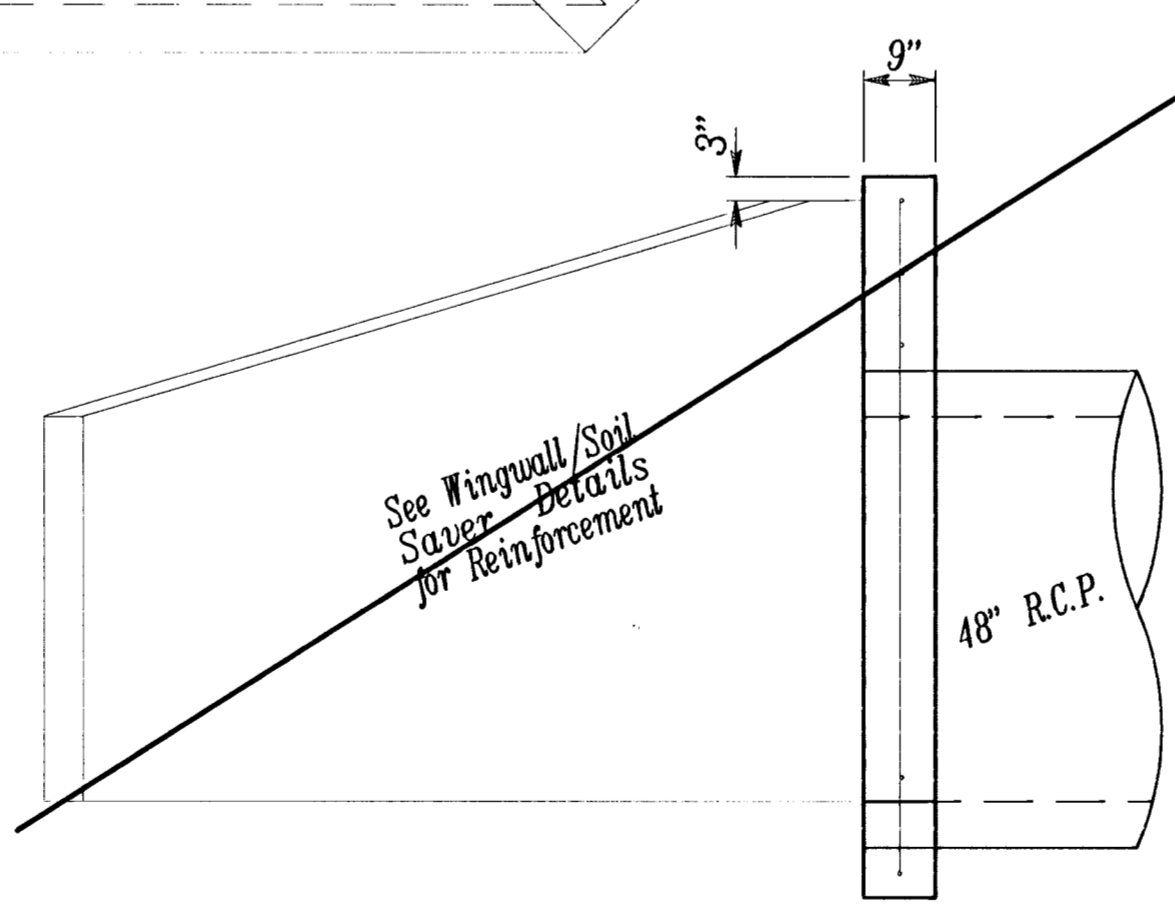
All Concrete Reinforcement to be #4 bars.

2-48" HEADWALL RE-BAR SCHEDULE				
Mark	Shape	No.	Length	Weight
A		1	28'-9"	19.78
B		6	6'-9"	27.86
C		3	15'-3"	31.48
D1		6	3'-8"	15.14
D2		12	2'-4"	19.26
E		8	1'-10"	10.09
Total Rebar			124 Lbs.	
Concrete			2.01 C.Y.	

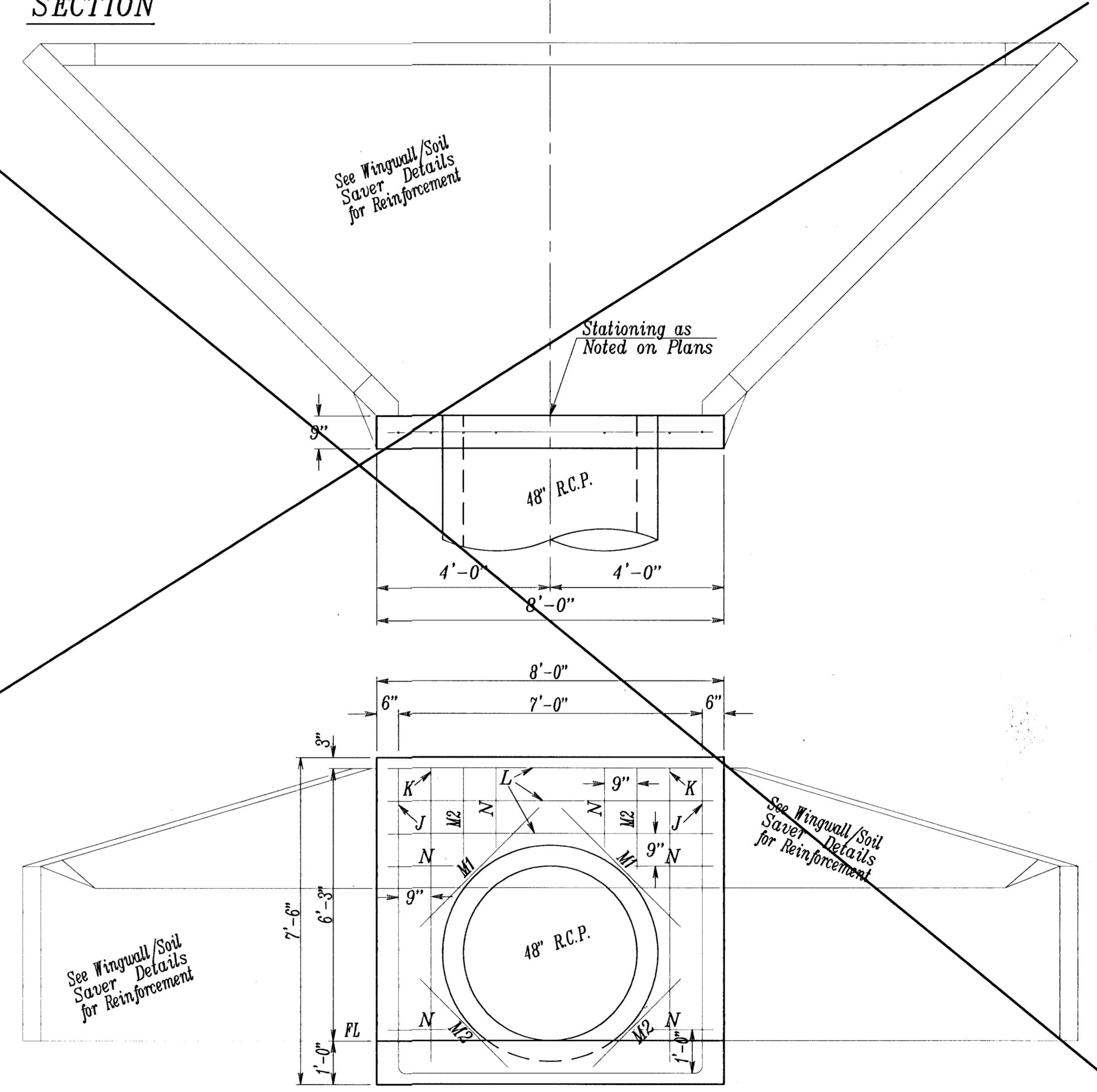
All Concrete Reinforcement to be #4 bars.



BENDING DIAGRAM



SECTION



FRONT

CONCRETE HEADWALL/COLLAR NOTES

CONCRETE: BEVEL ALL EXPOSED EDGES WITH A 3/4" TRIANGULAR MOLDING OR FINISH WITH AN APPROVED EDGING TOOL. CONCRETE SHALL BE AS PER CITY OF WICHITA STANDARD SPECIFICATIONS FOR CONCRETE PAVING MIX EXCEPT THAT IT SHALL HAVE A MINIMUM 28 DAY COMPRESSIVE STRENGTH OF 4,000 P.S.I. ALL PIPES SHALL BE FLUSH CUT PRIOR TO BEING CAST INTO THE HEADWALL.

REINFORCING STEEL: ALL DIMENSIONS RELATIVE TO REINFORCING STEEL ARE TO CENTERLINE OF BAR UNLESS OTHERWISE NOTED. ALL CLEARANCES SHALL BE 2" UNLESS OTHERWISE NOTED. ALL REINFORCING STEEL SHALL CONFORM TO A.S.T.M. DESIGNATION A615 GRADE 60 AND SHALL BE EPOXY COATED. ALL HORIZONTAL AND VERTICAL REINFORCING STEEL SHALL BE SPACED 12" CENTER TO CENTER UNLESS OTHERWISE NOTED.

PAYMENT: A DEDUCTION IN CONCRETE QUANTITIES HAS BEEN MADE FOR THE PIPE OPENINGS. THE 2-48" HEADWALL/COLLAR (REINFORCED CONCRETE) OR 48" HEADWALL/COLLAR (REINFORCED CONCRETE) SHALL BE PAID FOR AT THE UNIT PRICE BID PER EACH IN PLACE INCLUDING CONCRETE, REINFORCING STEEL, EXCAVATION AND ALL OTHER MISCELLANEOUS MATERIALS, LABOR, TOOLS, EQUIPMENT AND INCIDENTALS NECESSARY TO COMPLETE THE WORK. QUANTITIES SHOWN ARE FOR INFORMATION ONLY.

**2-48" HEADWALL/
48" HEADWALL DETAIL**

Revision
Approved
By
Date
No.

FALCON FALLS - PHASE 1
STREET IMPROVEMENTS
HEADWALL DETAILS
CITY OF WICHITA, KANSAS
NEIL D. CABLE, P.E. - CITY ENGINEER
C.O.W. Project # 472-83687 O.C.A. # 765782

POE & ASSOCIATES OF KANSAS, INC.
CONSULTING ENGINEERS
5940 E. Central, Suite 200
Wichita, KS 67208-4242
Phone 316/685-4114 FAX 316/685-4444

FINAL

Designed By: J. Ubert / B. Kulla
Drawn By: B. Kulla
Poc Job No.: 1748A
Date: May 2003

Sheet
92 of 88