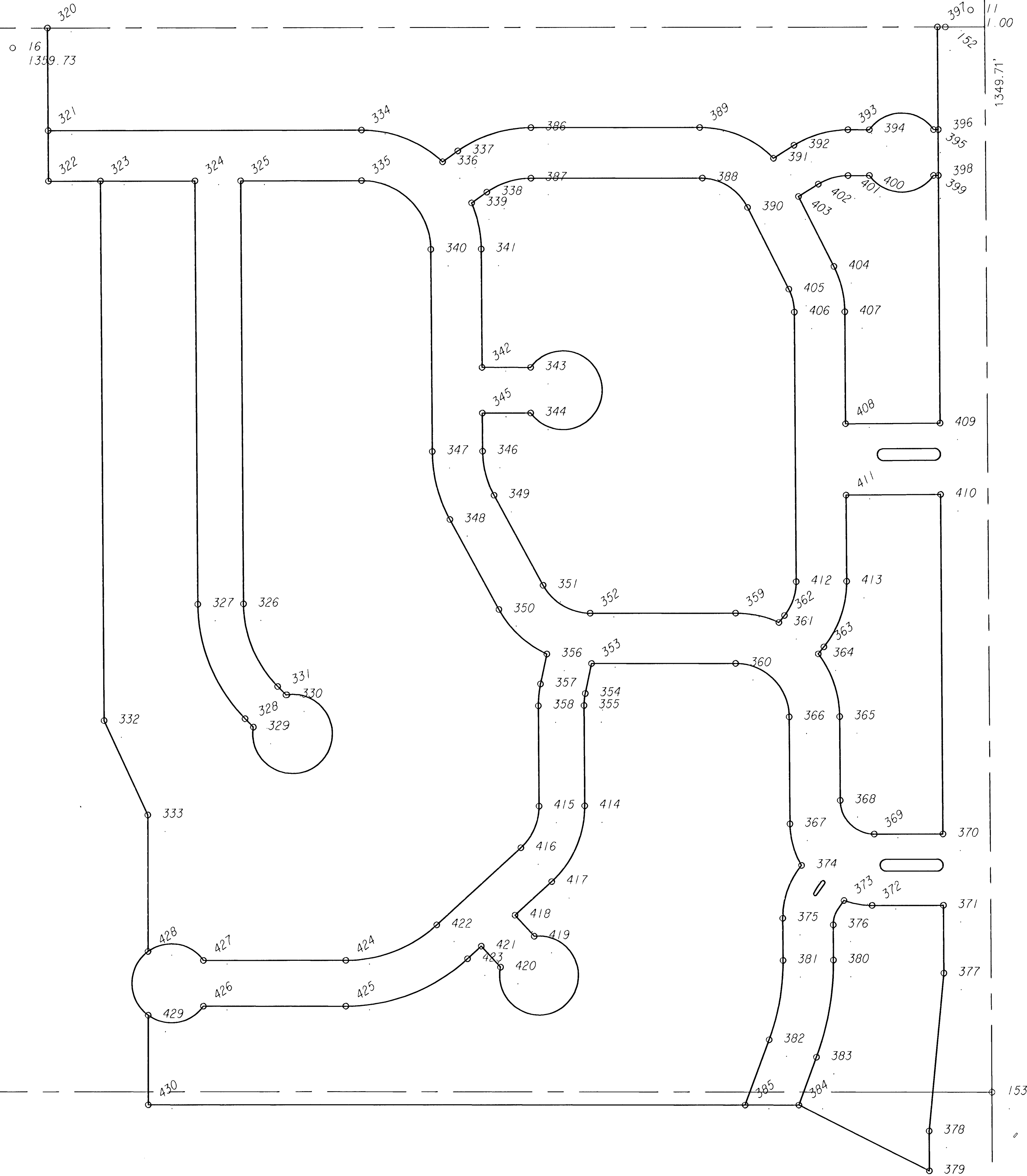


SCALE: 1"=80'



POINT	EASTING	NORTHING
152	9967.962	8954.540
153	10024.795	7604.803
157	7378.750	8956.681
320	8828.947	8955.482
321	8829.605	8825.481
322	8829.929	8761.481
323	8895.930	8761.426
324	9015.932	8761.327
325	9073.933	8761.279
326	9076.648	8225.015
327	9018.649	8224.722
328	9078.376	8079.495
329	9088.864	8068.792
330	9130.288	8109.388
331	9119.800	8120.090
332	8899.393	8077.459
333	8954.585	7957.751
334	9226.507	8825.153
335	9226.454	8761.153
336	9329.414	8784.904
337	9348.824	8798.582
338	9385.689	8746.266
339	9366.279	8732.588
340	9314.380	8673.598
341	9378.379	8673.922
342	9379.138	8524.043
343	9440.879	8523.992
344	9440.831	8465.992
345	9379.432	8466.043
346	9379.676	8417.736
347	9315.677	8417.412
348	9337.898	8331.182
349	9394.083	8361.829
350	9400.046	8217.244
351	9456.231	8247.890
352	9515.872	8212.452
353	9517.474	8148.451
354	9509.412	8110.586
355	9507.856	8095.442
356	9460.748	8160.540
357	9452.683	8122.664
358	9449.857	8095.148
359	9700.494	8212.300
360	9700.441	8148.300
361	9755.453	8200.264
362	9762.596	8209.184
363	9812.553	8169.180
364	9805.410	8160.260
365	9832.383	8080.968
366	9768.384	8080.644
367	9769.071	7944.959

POINT	EASTING	NORTHING
368	9832.921	7974.768
369	9875.920	7931.986
370	9963.139	7931.986
371	9963.597	7841.486
372	9873.069	7841.486
373	9837.376	7847.803
374	9783.593	7892.476
375	9759.676	7825.411
376	9823.719	7816.995
377	9964.031	7755.808
378	9944.973	7555.841
379	9945.180	7505.261
380	9823.944	7772.499
381	9759.945	7772.175
382	9742.159	7671.526
383	9802.172	7649.288
384	9779.761	7588.812
385	9711.561	7588.953
386	9441.697	8827.975
387	9441.644	8763.975
388	9659.273	8763.795
389	9655.967	8827.798
390	9716.611	8726.343
391	9749.633	8788.697
392	9775.670	8804.992
393	9844.210	8824.640
394	9871.384	8824.620
395	9952.835	8824.552
396	9958.791	8824.547
397	9957.962	8954.548
398	9958.743	8766.547
399	9952.797	8766.552
400	9871.325	8766.620
401	9844.165	8766.642
402	9806.440	8755.827
403	9781.324	8740.109
404	9826.041	8651.168
405	9768.862	8622.420
406	9775.788	8593.551
407	9839.787	8593.875
408	9840.506	8451.871
409	9960.504	8452.478
410	9960.962	8361.979
411	9840.964	8361.372
412	9777.516	8252.033
413	9841.516	8252.357
414	9508.500	7968.367
415	9450.500	7968.074
416	9427.333	7915.244
417	9466.407	7872.381
418	9419.737	7829.837
419	9444.076	7803.138
420	9401.213	7764.064
421	9376.874	7790.763
422	9320.258	7817.634
423	9359.332	7774.771
424	9204.702	7773.006
425	9204.582	7715.006
426	9024.756	7715.379
427	9024.876	7773.379
428	8954.585	7784.833
429	8954.585	7704.094
430	8954.585	7590.525

FINAL

Designed By: J. Ubert / B. Kulla
 Drawn By: B. Kulla
 POC Job No.: 1748A
 Date: May 2003

POE & ASSOCIATES OF KANSAS, INC.
 CONSULTING ENGINEERS
 6940 E. Central, Suite 200
 Merriam, KS 66202-4444
 Phone 316-686-4114 FAX 316-686-4444

CITY OF WICHITA, KANSAS
 NEIL D. CABLE, P.E. - CITY ENGINEER
 Proj# 472-83887 O.C.A.# 765782

FALCON FALLS - PHASE 1
 STREET IMPROVEMENTS
 COORDINATE POINT LIST

No.	Date	By	Approved	Revision