

GENERAL NOTES

- UNLESS SHOWN OR STATED OTHERWISE ON THESE DRAWINGS, MATERIALS AND CONSTRUCTION SHALL BE IN ACCORDANCE WITH CITY OF WICHITA STANDARD SPECIFICATIONS.
- CONTRACTOR WILL BE REQUIRED TO PROVIDE A MINIMUM ADVANCE NOTICE OF SEVENTY-TWO (72) HOURS TO UTILITY COMPANIES PRIOR TO STARTING ANY EXCAVATION AS FOLLOWS:

KANSAS ONE-CALL 1-800-344-7233
or 687-2470 (LOCAL WICHITA)

THE CONTRACTOR MUST NOTIFY THE FOLLOWING IN CASE OF AN EMERGENCY:

SBC (TELEPHONE) 800-870-8390
COX COMMUNICATIONS (CABLE) 262-0661
KANSAS GAS SERVICE (GAS) 832-3101
CITY OF WICHITA WATER & SEWER 262-6000
WESTAR (ELECTRIC) 261-6512
AQUILA (GAS) 800-303-0357

- THE CONTRACTOR SHALL BE RESPONSIBLE FOR PRESERVING PROPERTY IRONS. THE CONTRACTOR WILL BE REQUIRED TO RE-ESTABLISH ANY PROPERTY IRONS WHICH ARE DAMAGED OR DESTROYED BY HIS CONSTRUCTION OPERATIONS. SUCH IRONS SHALL BE RE-ESTABLISHED BY A LICENSED LAND SURVEYOR IN ACCORDANCE WITH STATE LAWS.
- EXISTING UTILITIES AND THEIR LOCATIONS, AS SHOWN ON THE PLANS REPRESENT THE BEST INFORMATION OBTAINABLE FOR DESIGN. LOCATION INFORMATION HAS BEEN OBTAINED FROM THE VARIOUS UTILITY COMPANIES AND IS EITHER FROM COMPANY RECORD DRAWINGS OR COMPANY PROVIDED FIELD LOCATIONS. THE PLAN LOCATIONS SHOWN ARE NOT GUARANTEED. ADDITIONAL EXISTING UTILITIES MAY ALSO BE ENCOUNTERED.
- RUBBLE FROM THE REMOVAL OF MISCELLANEOUS STRUCTURES AND EXCESS EXCAVATION WHICH IS TO BE WASTED SHALL BE DISPOSED OF ON SITES TO BE PROVIDED BY THE CONTRACTOR. THESE SITES SHALL BE APPROVED BY THE ENGINEER AS TO SUITABILITY, APPEARANCE AND SITE LOCATION. LOCATIONS THAT, IN THE OPINION OF THE ENGINEER, WILL LEAVE AN UNSIGHTLY APPEARANCE WILL NOT BE APPROVED. ALL DISPOSAL SITES MUST BE APPROVED BY THE KANSAS DEPARTMENT OF HEALTH AND ENVIRONMENT. MATERIAL EITHER STOCKPILED OR DISPOSED OF IN A FLOOD PLAIN WOULD REQUIRE A KANSAS STATE BOARD OF AGRICULTURE PERMIT. ANY MATERIAL DUMPED IN WATERS OF THE UNITED STATES OR WETLANDS IS SUBJECT TO U.S. CORPS OF ENGINEERS PERMITTING REGULATIONS. ANY MATERIAL BURIED OR STOCKPILED BEYOND APPROVED CONSTRUCTION LIMITS WOULD REQUIRE ADDITIONAL ARCHAEOLOGICAL INVESTIGATIONS UNLESS BURIED IN A PREVIOUSLY APPROVED BORROW LOCATION.
- COST OF EXCAVATION, HAULING, AND DUMPING OF EXCESS EXCAVATION SHALL BE SUBSIDIARY TO THE PROJECT.
- A PORTION OF EXCESS EXCAVATED MATERIAL SHALL BE MOUNDED AROUND MANHOLES WHICH EXTEND MORE THAN ONE (1) FOOT ABOVE THE EXISTING GROUND. SUCH MOUNDS SHALL BE CONSTRUCTED WITH A SIX (6) FOOT DIAMETER FLAT TOP WITH 4 TO 1 SIDE SLOPES DOWN TO THE ORIGINAL GROUND. THE ELEVATION OF THE FLAT TOP OF THE MOUND SHALL BE 0.4 FOOT BELOW THE TOP OF THE MANHOLE.
- TREES AND SHRUBS IN PUBLIC RIGHT-OF-WAY WHICH ARE IN DIRECT CONFLICT WITH PROPOSED NEW CONSTRUCTION SHALL BE REMOVED BY THE CONTRACTOR WITH THE ENGINEER'S APPROVAL. TREES AND SHRUBS WHICH ARE NOT IN DIRECT CONFLICT WITH PROPOSED NEW CONSTRUCTION SHALL BE SAVED AND PROTECTED FROM DAMAGE.
- ALL DISTURBED AREAS TO BE SEEDDED WITH ANNUAL RYE GRASS AT A RATE OF 200 LBS. PER ACRE WITHIN 10 DAYS OF CONSTRUCTION. CONTRACTOR TO PREPARE GROUND PER CITY SPECIFICATIONS. COST IS SUBSIDIARY TO SITE PREPARATION AND RESTORATION.

PROJECT NOTES

THE CONTRACTOR SHALL BE AWARE THAT SANITARY SEWER PROJECT NUMBER 468-84321 AND WATER MAIN PROJECT NUMBER 448-90277 HAVE BEEN LAYED AND THERE IS A SEQUENCE TO THE CONSTRUCTION OF THOSE PROJECTS. THIS RCB PROJECT IS CLEAR OF THE SANITARY SEWER PROJECT HOWEVER THE WATERLINE CROSSES DIRECTLY UNDERNEATH THE RCB. A STEEL CASING HAS BEEN INCLUDED FOR THE WATERLINE CROSSING WITHIN THIS PROJECT TO ELIMINATE CONFLICT WITH THE WATER. IT IS ANTICIPATED THAT THE RCB WILL BE UNDER CONSTRUCTION BY THE TIME THE WATERLINE IS CONSTRUCTED WITHIN THIS AREA. THE CONTRACTOR SHALL COORDINATE WITH THE WATERLINE CONTRACTOR TO USE THIS STEEL CASING AS NEEDED FOR THE WATERLINE SO AS ELIMINATE THE CONFLICT WITH THE RCB. IF HOWEVER THE WATERLINE HAS BEEN INSTALLED PRIOR TO CONSTRUCTION OF THE RCB, THE STEEL CASING SHALL BE DELETED FROM THIS CONTRACT. THE CONTRACTOR SHALL BEGIN CONSTRUCTION MAY 15TH AND BE SUBSTANTIALLY COMPLETE BY JULY 13TH. SUBSTANTIALLY COMPLETE SHALL BE DEFINED AS ALL RCB INSTALLATION, CONCRETE WINGWALLS COMPLETED, AND EARTHWORK / BACKFILL SO AS TO ALLOW EARTHWORK CONTRACTOR ABILITY TO CONSTRUCT FINAL PAVEMENT SECTION AND PONDS THROUGH AND ADJACENT TO THE RCB. COMPLETION OF THE STONE FASCIA SHALL BE COMPLETED NO LATER THAN JULY 27TH. IT IS ANTICIPATED THAT THE EARTHWORK CONTRACT WILL BEGIN ON JULY 2ND. THE CONTRACTOR SHALL MAKE ROOM FOR THE EARTHWORK CONTRACTOR DURING THIS TIME. LIQUIDATED DAMAGES ARE PER CITY OF WICHITA SPECIFICATIONS, OR A MINIMUM OF \$500 PER DAY, WHICHEVER IS GREATER.

SWD #318 - RCBC PHASE 1

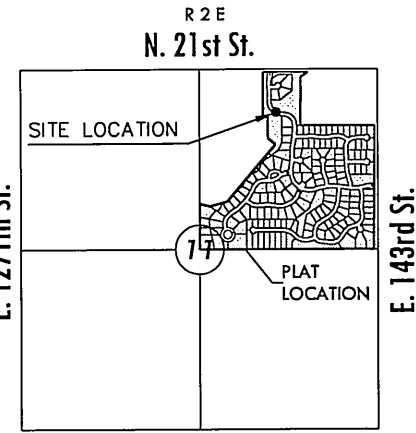
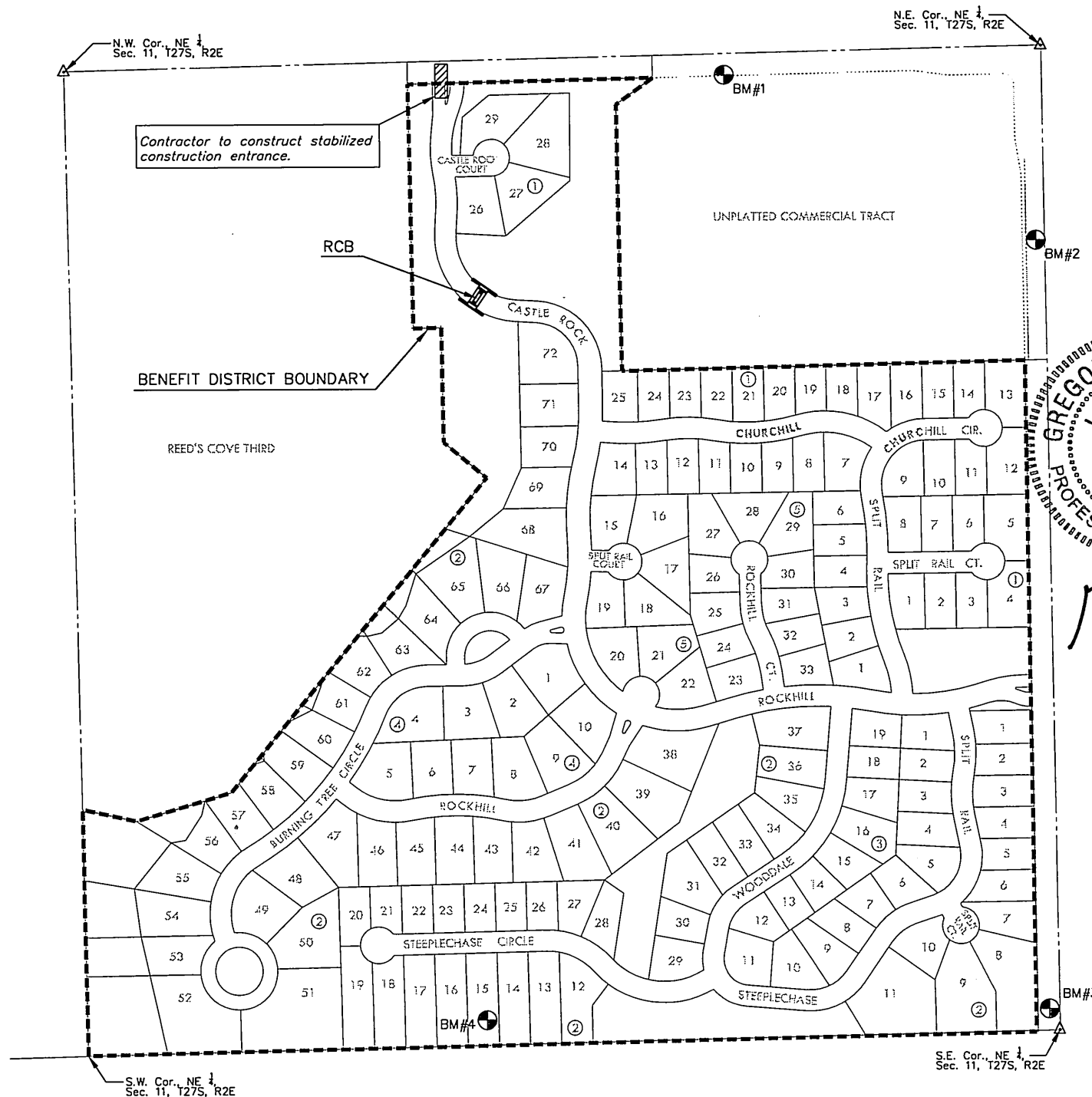
TO SERVE

KRUG SOUTH ADDITION

PROJECT NO. 468-84323

THE CITY OF WICHITA, KANSAS
JAMES L. ARMOUR, CITY ENGINEER

OCA NO. 751439



VICINITY MAP

INDEX TO DRAWINGS

SHEET NO.	DESCRIPTION
1	TITLE SHEET
2	PLAN & PROFILE
3	PLAN VIEW
4	RCB SECTIONS
5	HEADWALL SECTIONS & DETAILS
6	ELEVATIONS
7	COLUMN DETAILS
8	PRECAST RCB SECTIONS
10-14	BUBBLE MAP
15-16	BMP DETAILS
	PLAT

GREGORY J. ALLISON
LICENSED
11159
KANSAS
PROFESSIONAL ENGINEER

Gregory J. Allison
4/10/07

BENCHMARKS

- Datum BM "T" at NE corner of inlet on S. side of Williamsgate over bridge in Hawthorne Addition. Elev. = 1355.74 (NGVD 29)
- BM#1 RR spike in S. face of PP, 3rd PP W. of 143rd St. (799' from CL) S. side of 21st St. (49' from CL) Elev. = 1362.17 (NGVD 29)
- BM#2 FH NE bolt w/ tag on top of flange, W. side of 143rd St. NW of drive. (23' from CL) Elev. = 1382.81 (NGVD 29)
- BM#3 RR spike in N. face of HLP in N. pole, the first HLP w. of E. 143rd St. Elev. = 1370.25 (NGVD 29)
- BM#4 RR spike in N. face of HLP in N. pole, the third HLP west of E. 143rd St. Elev. = 1358.43 (NGVD 29)

MKEC
ENGINEERING
CONSULTANTS, INC.
411 N. WEBB ROAD
WICHITA, KS. 67206
316-684-9600

SWD #318 - RCB
KRUG SOUTH ADDITION

TITLE SHEET

SHEET TITLE
468-84323
PROJECT NUMBER

MLP / MLP / GJA
DESIGNED DRAWN CHECKED

ISSUED
April 2007

REVISED

SHEET NO.
1 of 16