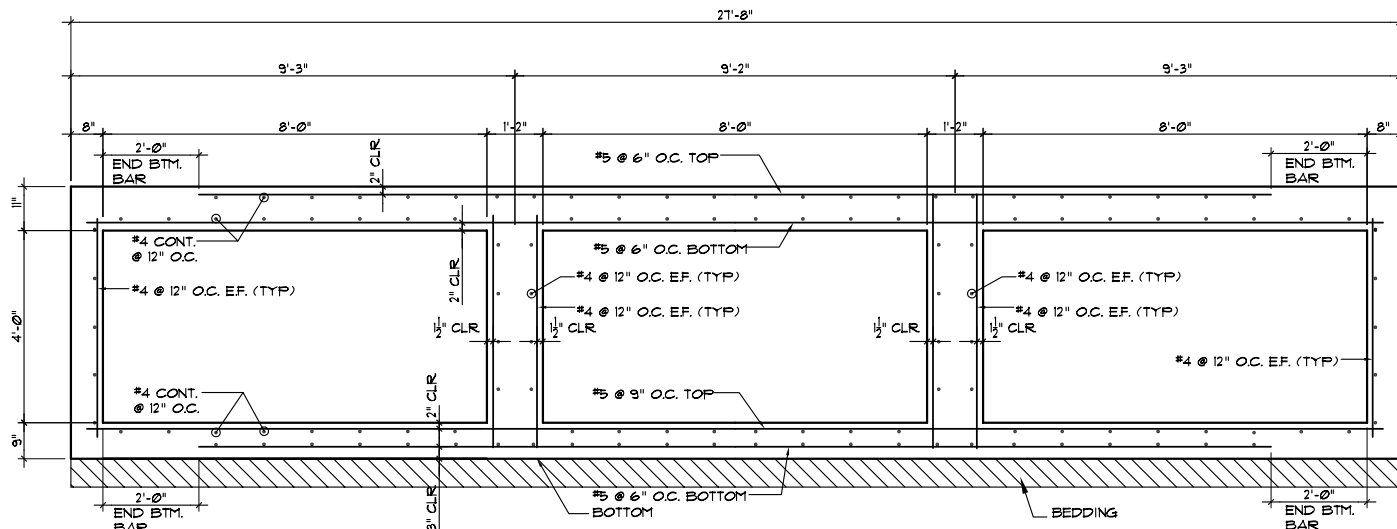


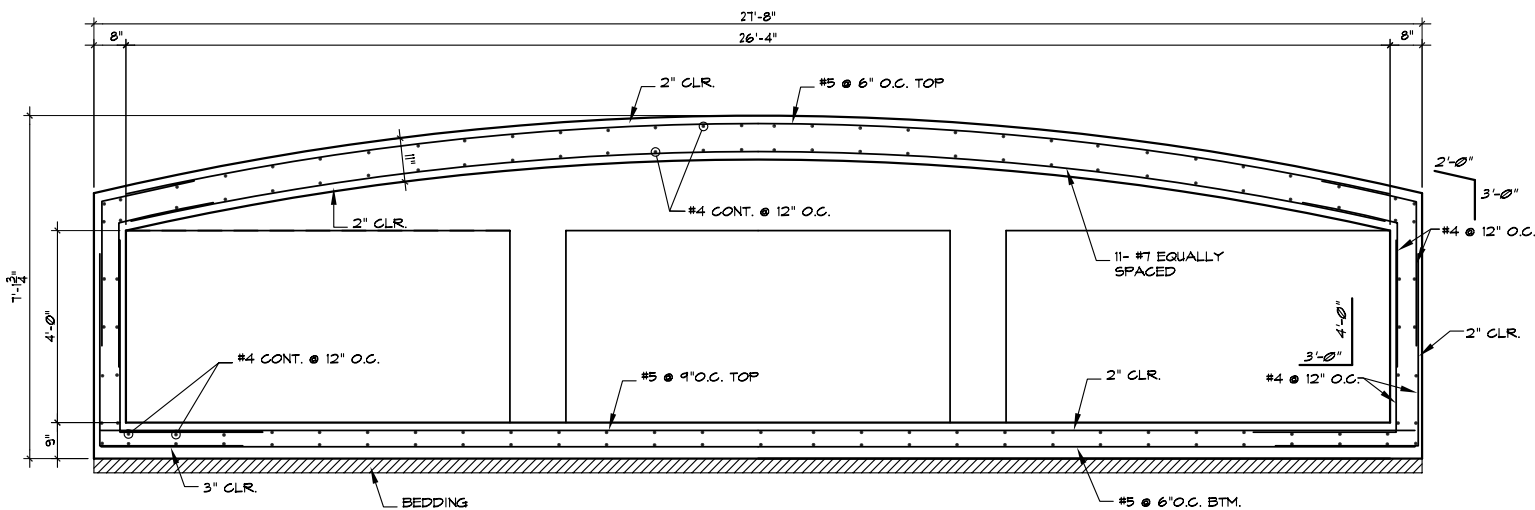
HEADWALL / RCB SECTION

SCALE: 1/4" = 1'-0"



SECTION - A

SCALE: 1/2" = 1'-0"



SECTION - B

SCALE: 1/2" = 1'-0"

GENERAL NOTES

LOADING: HS20-44 AASHTO SPECIFICATIONS, 1996 EDITION.

UNIT STRESSES: CLASS AAA (AE) CONCRETE; F_C = 4,000 P.S.I.
REINFORCING STEEL; F_Y = 60,000 P.S.I.

CONCRETE: CLASS AAA (AE) CONCRETE SHALL BE USED THROUGHOUT. BEVEL ALL EXPOSED EDGES WITH A 3/4" TRIANGULAR MOULDING.

REINFORCING: ALL REINFORCING SHALL CONFORM TO ASTM A615, GRADE 60. ALL DIMENSIONS RELATIVE TO REINFORCING STEEL SHALL BE TO CENTERLINE OF BAR UNLESS OTHERWISE NOTED.

EXCAVATION: EXCAVATION FOR CULVERT SHALL NOT BE PAID FOR DIRECTLY BUT SHALL BE SUBSIDIARY TO BOX CONSTRUCTION.

**STRUCTURAL
RCB
SECTIONS**

SHEET TITLE
PROJECT NUMBER
468-84323

DESIGN BY
MLP
DRAWN BY
GJA
CHECKED BY

ISSUED
April 2007
REVISED

SHEET NO.
4 of 16