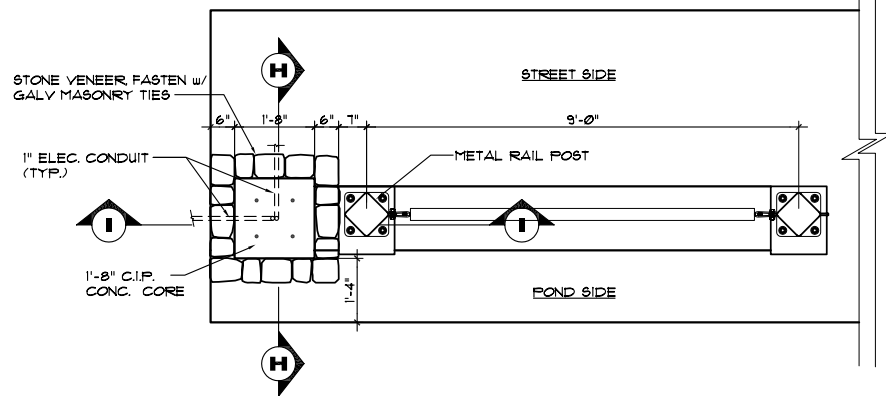


**GENERAL NOTES**

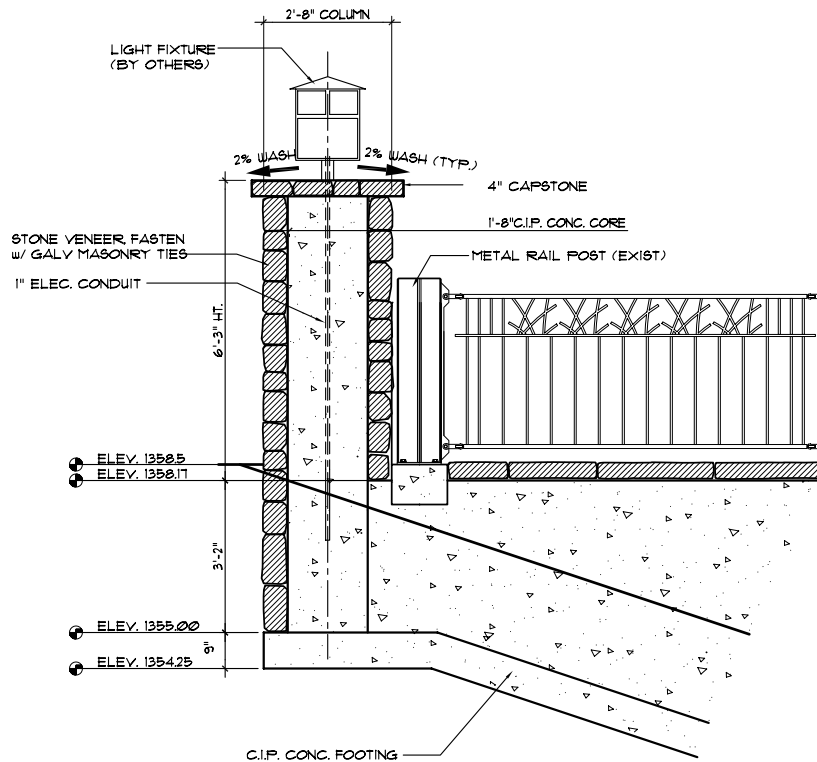
1) **STONE VENEER**  
 QUARRIED BY: TURKEY CREEK NATURAL STONE  
 CONTACT: CHUCK EVANS  
 PHONE: 918-641-6610  
 TYPE: SAN-BOIS BLEND (50% CHOPPED,  
 50% NON-CHOPPED)  
 FINISH: NATURAL (OUT OF GROUND)  
 BED THICKNESS: 3-5"  
 LENGTH: 10-42"  
 HEIGHT: 2-12"

2) **GROUT COLOR:** TO MATCH EXISTING.  
 3) **PRODUCT MOCK-UPS**  
 IT IS RECOMMENDED THAT A 5'x5' PANEL BE CONSTRUCTED ON THE SOUTH HEADWALL SO THAT THE MASON CAN REVIEW INITIAL STONE WORK WITH OWNER'S REPRESENTATIVE PRIOR TO FULL WORK COMMENCEMENT. (STONE LAYING STYLE TO REPLICATE EXISTING BRIDGE @ REED'S COVE ENTRY 1/2 MILE TO THE WEST).  
 4) PROVIDE COTTON ROPE WEEP THROUGH ALL STONE VENEER 2" ABOVE FINISHED GRADE 24" O.C. ON ALL COLUMN FACES (16 TOTAL).



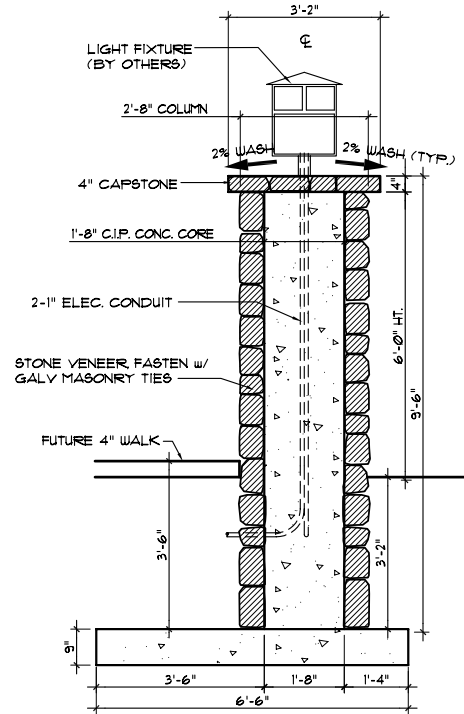
**PLAN VIEW**

SCALE: 1/2" = 1'-0"



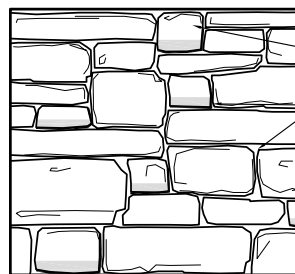
**SECTION - I**

SCALE: 1/2" = 1'-0"



**SECTION - H**

SCALE: 1/2" = 1'-0"



**STONE MASONRY**

SCALE: 1/2" = 1'-0"

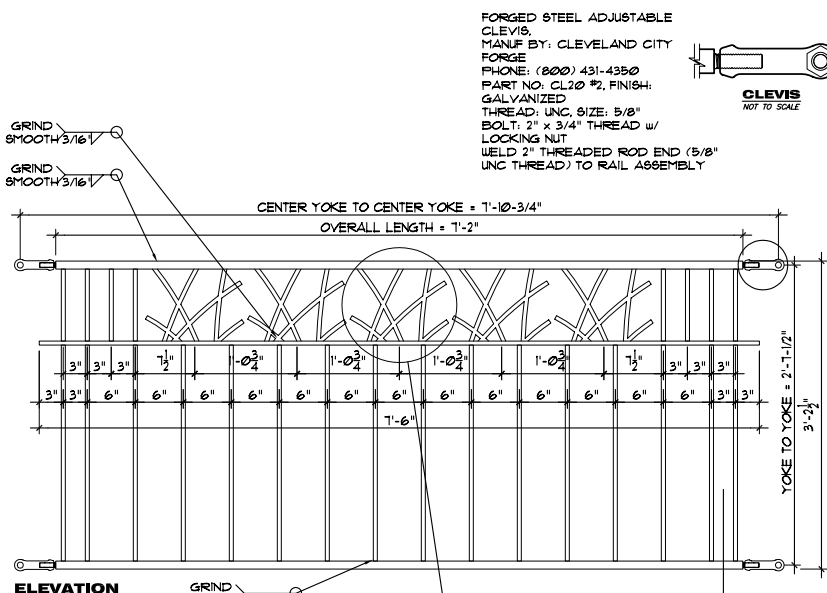
**STONE JUMPERS**  
 EXTEND MIN 3'-5" PAST TYPICAL STONE VENEER PLANE.  
**MORTAR JOINTS (1/2"-3/4" SPACING)**  
 FINISHED STONE MASONRY SHALL HAVE A PARTIAL DRY-STACK APPEARANCE. MORTAR JOINTS ARE TO BE RAKED w/ A STEEL BRUSH.  
**RANDOM ASHLER PATTERN (DRY-LAY)**  
 STONE PATTERN SHOULD NOT HAVE A CONSISTANT MASONRY COURSE. RATHER RANDOM COURSEING OF INTERLOCKING STONE OF DIFFERENT SIZES AND SHAPES, AS SHOWN.

**GENERAL NOTE**  
 MAINTAIN A RELATIVE FLUSH EDGE ALONG THE BACK AND FRONT SIDE OF THE STONE CAP. THE MORTAR JOINTS SHALL BE RANDOMLY SPACED AND IRREGULAR. MORTAR JOINTS SHALL HAVE A 1/2"-3/4" SPACING. RAKE w/ STEEL BRUSH, TYP.



**STONE CAP**

SCALE: 1/2" = 1'-0"

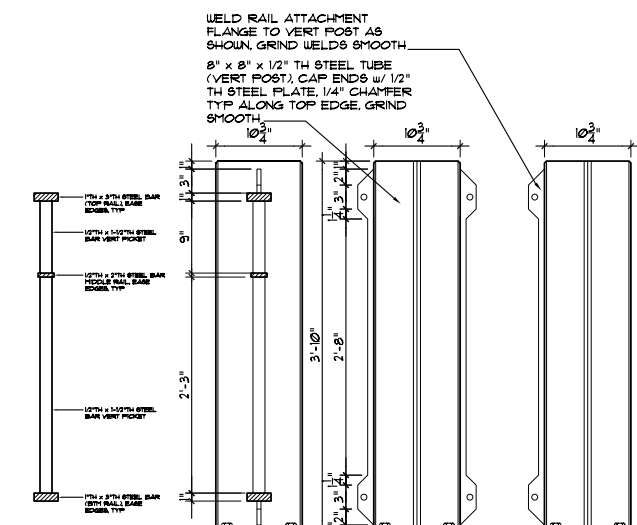


**ELEVATION**

**GENERAL FINISH NOTES**  
 1. GRIND ALL STEEL TO REMOVE SHARP EDGES & SMOOTH WELDS  
 2. SAND BLAST STEEL TO REMOVE MILL SLAG  
 3. COVER THREADED BOLT ENDS FOR CLEVIS CONNECTION  
 4. APPLY POWDER COAT FINISH, COLOR CORVEL RUST 23-9192  
 5. APPLY INDUSTRIAL GRADE CONCRETE SEALER (4-MIL)  
 6. SAMPLE MOCK-UP SECTION REQUIRED PRIOR TO FINAL PRODUCT

**REED ORNAMENT**

SCALE: 1" = 1'-0"



**SIDE ELEVATION**

**FRONT ELEVATION (INTERMEDIATE POST)**

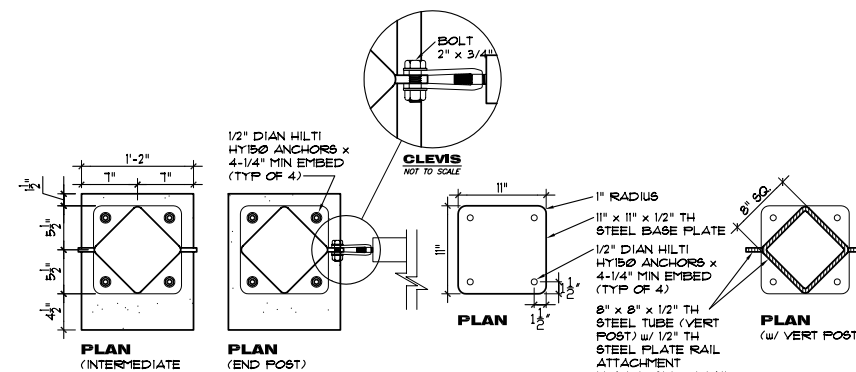
**FRONT ELEVATION (END POST)**

**ATTACHMENT FLANGE**

NOT TO SCALE

**RAIL POST**

SCALE: 1" = 1'-0"



**PLAN (INTERMEDIATE POST)**

**PLAN (END POST)**

**PLAN**

**PLAN (w/ VERT POST)**

**BASE PLATE**

SCALE: 1" = 1'-0"