

**PAVING PLANS**  
**MONARCH LANDING**  
**1st ADDITION**

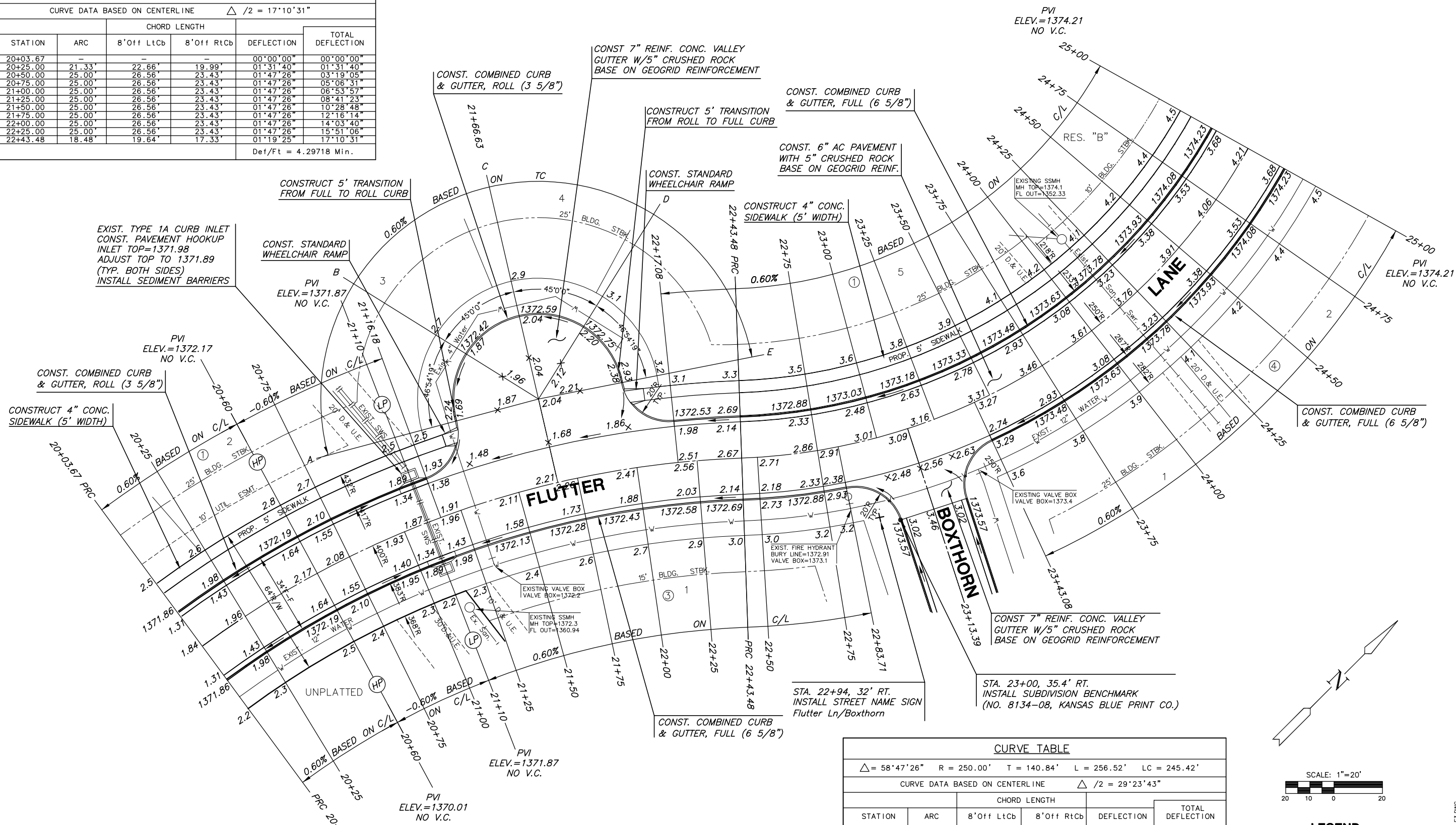
**CURVE TABLE**

$\Delta = 34^{\circ}21'02''$  R = 400.00' T = 123.63' L = 239.81' LC = 236.24'

CURVE DATA BASED ON CENTERLINE  $\Delta / 2 = 17^{\circ}10'31''$

STATION	ARC	CHORD LENGTH		DEFLECTION	TOTAL DEFLECTION
		8' Off LtCb	8' Off RtCb		
20+03.67	-	-	-	00°00'00"	00°00'00"
20+25.00	21.33'	22.66'	19.99'	01°31'40"	01°31'40"
20+50.00	25.00'	26.56'	23.43'	01°47'26"	03°19'05"
20+75.00	25.00'	26.56'	23.43'	01°47'26"	05°06'31"
21+00.00	25.00'	26.56'	23.43'	01°47'26"	06°53'57"
21+25.00	25.00'	26.56'	23.43'	01°47'26"	08°41'23"
21+50.00	25.00'	26.56'	23.43'	01°47'26"	10°28'48"
21+75.00	25.00'	26.56'	23.43'	01°47'26"	12°16'14"
22+00.00	25.00'	26.56'	23.43'	01°47'26"	14°03'40"
22+25.00	25.00'	26.56'	23.43'	01°47'26"	15°51'06"
22+43.48	18.48'	19.64'	17.33'	01°19'25"	17°10'31"

Def/Ft = 4.29718 Min.



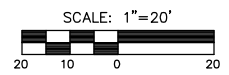
**CURVE TABLE**

$\Delta = 58^{\circ}47'26''$  R = 250.00' T = 140.84' L = 256.52' LC = 245.42'

CURVE DATA BASED ON CENTERLINE  $\Delta / 2 = 29^{\circ}23'43''$

STATION	ARC	CHORD LENGTH		DEFLECTION	TOTAL DEFLECTION
		8' Off LtCb	8' Off RtCb		
22+43.48	-	-	-	00°00'00"	00°00'00"
22+50.00	6.52'	5.87'	7.17'	00°44'50"	00°44'50"
22+75.00	25.00'	22.49'	27.49'	02°51'53"	03°36'43"
23+00.00	25.00'	22.49'	27.49'	02°51'53"	06°28'36"
23+25.00	25.00'	22.49'	27.49'	02°51'53"	09°20'29"
23+50.00	25.00'	22.49'	27.49'	02°51'53"	12°12'23"
23+75.00	25.00'	22.49'	27.49'	02°51'53"	15°04'16"
24+00.00	25.00'	22.49'	27.49'	02°51'53"	17°56'09"
24+25.00	25.00'	22.49'	27.49'	02°51'53"	20°48'02"
24+50.00	25.00'	22.49'	27.49'	02°51'53"	23°39'56"
24+75.00	25.00'	22.49'	27.49'	02°51'53"	26°31'49"
25+00.00	25.00'	22.49'	27.49'	02°51'53"	29°23'42"

Def/Ft = 6.87549 Min.



**LEGEND**

++ STREET SIGN & SIGN LOCATION  
(SEE SIGN ASSEMBLY TABLE  
FOR TYPE & STATION OF SIGN)

NOTE:  
TOP OF CURB ELEVATIONS SHOWN  
ARE FOR FULL CURB. CONSTRUCT  
CURB AND GUTTER AS NOTED.

**FLUTTER LANE**  
SHEET TITLE  
472-84505  
PROJECT NUMBER

DFL  
DESIGN BY  
KKL  
DRAWN BY  
GJA  
CHECKED BY

ISSUED  
April 2007  
REVISED

SHEET NO.  
12 of 55