

CURVE TABLES-C3

$\Delta = 28'22'46"$ R = 500.00' T = 126.42' L = 247.66' LC = 245.13'

CURVE DATA BASED ON BL#1 $\Delta/2 = 14'11'23"$

STATION	ARC	CHORD LENGTH		DEFLECTION	TOTAL DEFLECTION
		8'off LtCb	8'off RtCb		
5+03.25	-	-	-	00'00'00"	00'00'00"
5+25.00	21.75'	20.79'	22.71'	01'14'46"	01'14'46"
5+44.43	19.43'	18.57'	20.28'	01'06'48"	02'21'34"
5+50.00	5.57'	5.32'	5.82'	00'19'09"	02'40'43"
5+50.32	32'	31'	33'	00'01'06"	02'41'49"
5+75.00	24.68'	23.59'	25.76'	01'24'51"	04'06'39"
6+00.00	25.00'	23.90'	26.10'	01'25'57"	05'32'36"
6+25.00	25.00'	23.90'	26.10'	01'25'57"	06'58'33"
6+50.00	25.00'	23.90'	26.10'	01'25'57"	08'24'29"
6+75.00	25.00'	23.90'	26.10'	01'25'57"	09'50'26"
7+00.00	25.00'	23.90'	26.10'	01'25'57"	11'16'23"
7+25.00	25.00'	23.90'	26.10'	01'25'57"	12'42'19"
7+50.00	25.00'	23.90'	26.10'	01'25'57"	14'08'16"
7+50.91	.91'	.87'	.95'	00'03'07"	14'11'23"

Def/Ft = 3.43775 Min.

CURVE TABLES-C5

$\Delta = 14'17'31"$ R = 300.00' T = 37.61' L = 74.83' LC = 74.64'

CURVE DATA BASED ON BL#1 $\Delta/2 = 07'08'46"$

STATION	ARC	CHORD LENGTH		DEFLECTION	TOTAL DEFLECTION
		8'off LtCb	8'off RtCb		
8+39.88	-	-	-	00'00'00"	00'00'00"
8+50.00	10.12'	9.38'	10.86'	00'57'59"	00'57'59"
8+75.00	25.00'	23.16'	26.83'	02'23'14"	03'21'13"
9+00.00	25.00'	23.16'	26.83'	02'23'14"	05'44'28"
9+14.72	14.72'	13.83'	15.79'	01'24'18"	07'08'45"
9+35.22	20.51'	19.00'	22.01'	01'57'30"	09'06'15"

Def/Ft = 5.72958 Min.

HAWTHORNE ADDITION

LOT 1

BL STA. 5+44.43, 17.70' LT.
PROP. CURB INLET TOP=1360.4
CONST. INLET HOOKUP & PVMT.
UNDERDRAIN W/PVMT. INSTALL
INLET SEDIMENT BARRIER.

STA. 8+83.88 THRU
STA. 9+08.88, INSTALL
58 SY OF BRICK PAVEMENT
W/30" CONC. BASE ON
6" CONC. BASE. (SEE
DETAIL SHT. 4)

CONST. 7" REINF.
VALLEY GUTTER W/5"
CRUSHED ROCK BASE
ON GEOGRID.

INSTALL 2-51 L.F.
OF 6" PVC SLEEVES
W/3' COVER.

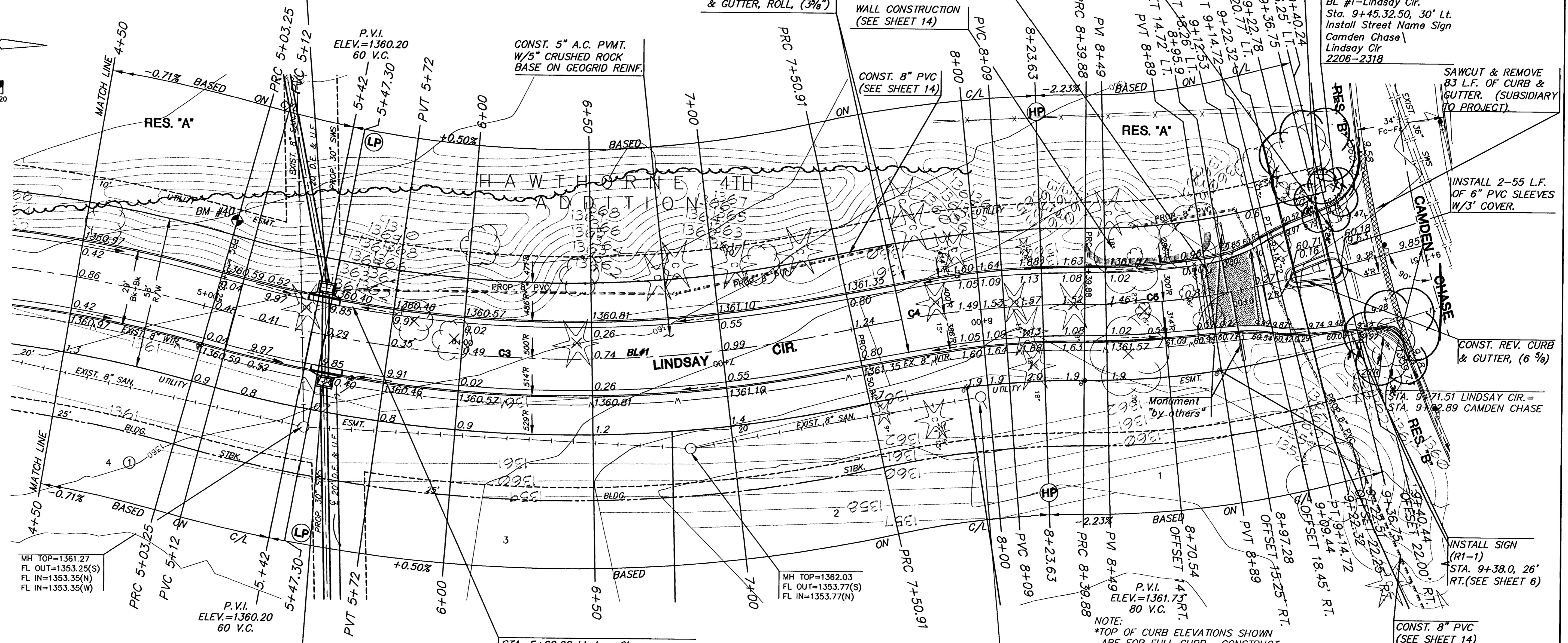
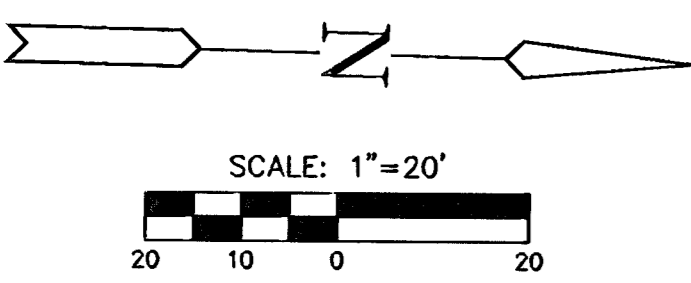
BL #1-Lindsay Cir.
Sta. 9+45.3250, 30' Lt.
Install Street Name Sign
Camden Chase
Lindsay Cir
2206-2318

SAWCUT & REMOVE
83 L.F. OF CURB &
GUTTER. (SUBSIDIARY
TO PROJECT).

INSTALL 2-55 L.F.
OF 6" PVC SLEEVES
W/3' COVER.

CONST. REV. CURB
& GUTTER, (6%)

INSTALL SIGN
(R1-1)
STA. 9+38.0, 26'
RT.(SEE SHEET 6)



CURVE TABLES-C4

$\Delta = 12'44'40"$ R = 400.00' T = 44.67' L = 88.97' LC = 88.79'

CURVE DATA BASED ON BL#1 $\Delta/2 = 06'22'20"$

STATION	ARC	CHORD LENGTH		DEFLECTION	TOTAL DEFLECTION
		8'off LtCb	8'off RtCb		
7+50.91	-	-	-	00'00'00"	00'00'00"
7+75.00	24.09'	25.41'	22.76'	01'43'31"	01'43'31"
8+00.00	25.00'	28.37'	23.62'	01'47'28"	03'30'57"
8+25.00	25.00'	28.37'	23.62'	01'47'28"	05'18'23"
8+39.88	14.88'	15.70'	14.06'	01'03'57"	06'22'20"

Def/Ft = 4.29718 Min.

BL STA. 5+50.32, 17.63' RT.
PROP. CURB INLET TOP=1360.4
CONST. INLET HOOKUP & PVMT.
UNDERDRAIN W/PVMT. INSTALL
INLET SEDIMENT BARRIER.

STA. 5+60.00 Lindsay Cir.
Install Subdivision Benchmark
(No. 8134-08 Kansas Blue Print Co.)

HAWTHORNE 4TH ADDITION

SUBDIVISION BENCH MARKS

NO.	STREET AND STATION	FROM CL	DESCRIPTION	ELEVATIONS
1	STA. 5+60.0 - LINDSAY CIR.	14.5' RT.	NORTH OF SWS INLET ON BC	

NOTE: CONTRACTOR SHALL INSTALL SUBDIVISION BENCH MARKS ("FLAT SURVEY MARKERS NO. 8134-08 3" TOP DIAMETER" PROVIDED BY KANSAS BLUE PRINT CO., INC.) COSTS TO BE CONSIDERED SUBSIDIARY TO CONSTRUCTION OF COMBINED CURB AND GUTTER.

NOTE:
*TOP OF CURB ELEVATIONS SHOWN
ARE FOR FULL CURB. CONSTRUCT
CURB AND GUTTER AS NOTED.
*CONTRACTOR TO MAINTAIN EXIST.
TREE FENCE ALONG WEST PROPERTY LINE.

AS-BUILT NOVEMBER 2006
REVISED 10-18-04 (ISLAND ENTRY)



HAWTHORNE 4TH ADDITION
LINDSAY CIRCLE (PRIVATE)
PROJECT NAME

PAVING PLANS
SHEET TITLE

DRK DESIGN BY. MKEC DRAWN BY. DRK CHECKED BY.

OCTOBER 2004 DATE. 02167 JOB NO. 8 / 28 SHEET/OF

R:\civil\021616\dwg\paving\lindsay_cir\as-built\021616_paving_rev.dwg