

# THE GATEWAY CENTER 2ND ADDITION

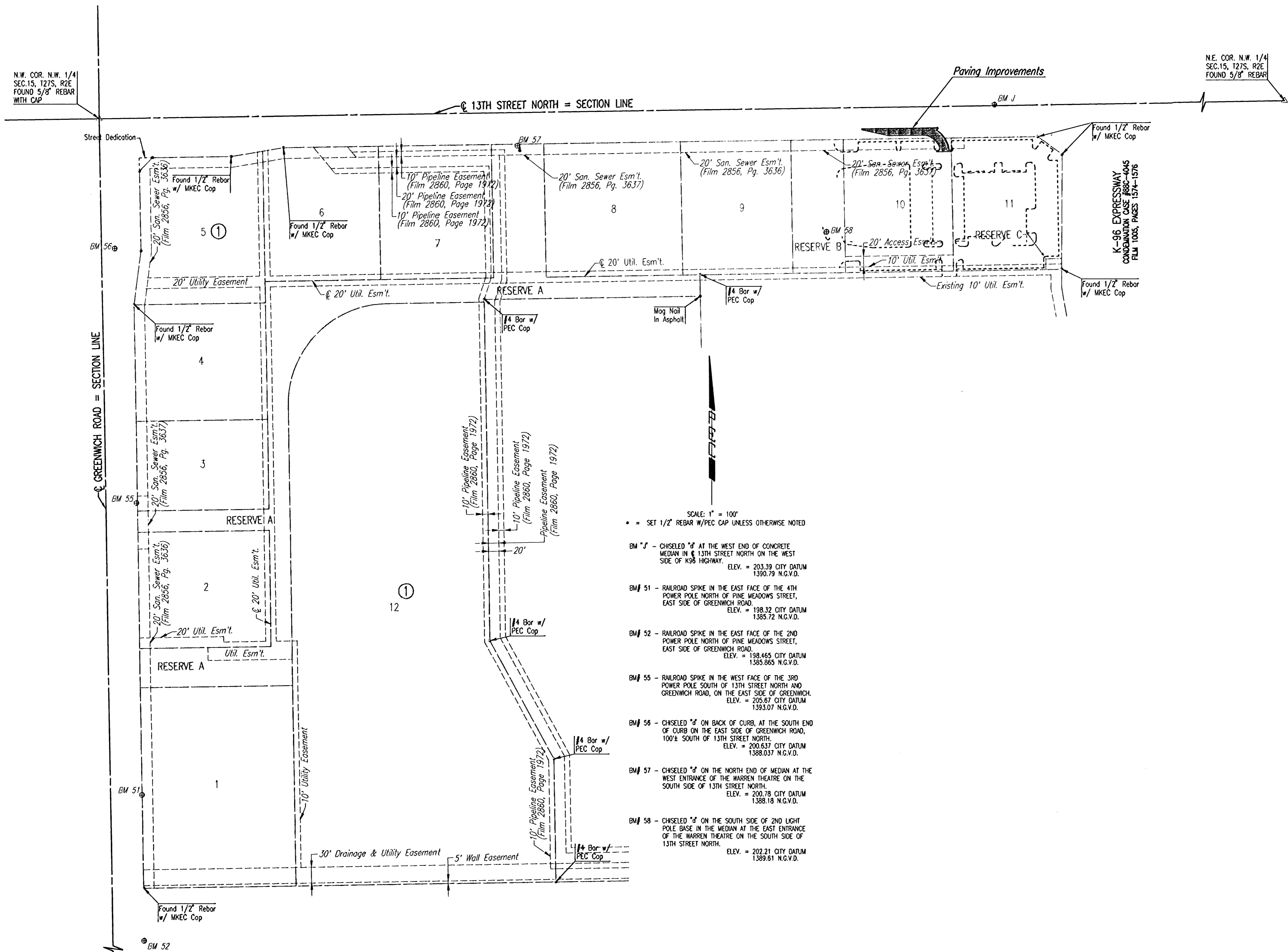
## AN ADDITION TO WICHITA, SEDGWICK COUNTY, KANSAS

### GENERAL NOTES

1. UNDERGROUND UTILITY SERVICE LINES AND OVERHEAD UTILITY POLE LINES ARE TO BE ADJUSTED AS NECESSARY BY OTHERS PRIOR TO CONSTRUCTION UNLESS THE PLANS SPECIFICALLY CALL FOR THEIR ADJUSTMENT BY THE CONTRACTOR. EXISTING UTILITIES AND THEIR LOCATION, AS SHOWN ON THE PLANS, REPRESENT THE BEST INFORMATION OBTAINABLE FOR DESIGN. LOCATION INFORMATION HAS BEEN OBTAINED FROM THE VARIOUS UTILITY COMPANIES AND IS EITHER FROM COMPANY RECORD DRAWINGS OR COMPANY PROVIDED FIELD LOCATIONS. THE CONTRACTOR WILL BE REQUIRED TO WORK AROUND EXISTING UTILITIES WITHIN THE RIGHT-OF-WAY WHICH DO NOT CONFLICT WITH PROPOSED CONSTRUCTION.
2. TREES AND SHRUBS IN PUBLIC RIGHT-OF-WAY WHICH ARE IN DIRECT CONFLICT WITH PROPOSED NEW CONSTRUCTION SHALL BE REMOVED BY THE CONTRACTOR WITH THE ENGINEER'S APPROVAL. TREES AND SHRUBS WHICH ARE NOT IN DIRECT CONFLICT WITH PROPOSED NEW CONSTRUCTION SHALL BE SAVED AND PROTECTED FROM DAMAGE.
3. RUBBLE FROM THE REMOVAL OF MISCELLANEOUS STRUCTURES SHALL BE DISPOSED OF ON SITES TO BE PROVIDED BY THE CONTRACTOR AND APPROVED AS NOTED BELOW.  
  
ALL DISPOSAL SITES MUST BE APPROVED BY THE KANSAS DEPARTMENT OF HEALTH AND ENVIRONMENT. MATERIAL EITHER STOCKPILED OR DISPOSED OF IN A FLOOD PLAIN WOULD REQUIRE A KANSAS STATE BOARD OF AGRICULTURE PERMIT. ANY MATERIAL DUMPED IN WATERS OF THE UNITED STATES OR WETLANDS IS SUBJECT TO U.S. CORPS OF ENGINEERS PERMITTING REGULATIONS. ANY MATERIAL BURIED OR STOCKPILED BEYOND APPROVED CONSTRUCTION LIMITS WOULD REQUIRE ADDITIONAL ARCHAEOLOGICAL INVESTIGATIONS UNLESS BURIED IN A PREVIOUSLY APPROVED BORROW LOCATION.
4. CONTRACTOR SHALL SATISFY HIMSELF OF SURFACE AND SUBSURFACE CONDITIONS PRIOR TO BIDDING.
5. TEMPORARY SURFACING MATERIAL (ROCK, ASPHALT, ETC.) MAY HAVE BEEN PLACED WITHIN STREET RIGHTS-OF-WAY FOR HAUL ROADS AND TEMPORARY ACCESS. CONTRACTOR SHALL FIELD VERIFY EXISTING CONDITIONS TO DETERMINE EXTENT, IF ANY, OF SUCH SURFACING. CONTRACTOR SHALL REMOVE SAID TEMPORARY SURFACING IN THE SAME MANNER AS NOTED ABOVE FOR RUBBLE. THIS REMOVAL SHALL BE SUBSIDIARY TO "EXCAVATION".
6. CONTRACTOR SHALL PROVIDE A MINIMUM SEVENTY-TWO (72) HOUR ADVANCE NOTICE (EXCLUDING WEEKENDS AND HOLIDAYS) PRIOR TO BEGINNING ANY EXCAVATION, TO KANSAS ONE-CALL SYSTEM, A UTILITY LOCATION SERVICE, AT (316) 687-2470 TO REQUEST THE FOLLOWING UTILITY COMPANIES TO LOCATE ALL EXISTING LINES WITHIN THE PROJECT AREA: KANSAS GAS SERVICE, WESTAR ENERGY, SBC, COX COMMUNICATIONS, CITY OF WICHITA SEWER MAINTENANCE AND CITY OF WICHITA WATER DEPARTMENT.
7. THE CONTRACTOR SHALL BE RESPONSIBLE FOR PRESERVING PROPERTY IRONS. THE CONTRACTOR WILL BE REQUIRED TO RE-ESTABLISH ANY PROPERTY IRONS WHICH ARE DAMAGED OR DESTROYED BY HIS CONSTRUCTION OPERATIONS. SUCH IRONS SHALL BE RE-ESTABLISHED BY A LICENSED LAND SURVEYOR IN ACCORDANCE WITH STATE LAWS.
8. THE WATER DEPARTMENT SHALL FIELD LOCATE WATER VALVES ONE TIME DURING CONSTRUCTION WHEN REQUESTED BY THE CONTRACTOR. IT SHALL BE THE CONTRACTOR'S RESPONSIBILITY TO PRESERVE SUCH FIELD LOCATIONS DURING THE CONSTRUCTION PROCESS. WATER VALVES, WATER VALVE BOXES OR FIRE HYDRANTS DAMAGED DURING CONSTRUCTION SHALL BE REPAIRED BY THE CONTRACTOR AT HIS OWN EXPENSE.
9. THE CONTRACTOR SHALL ADJUST WATER VALVE BOXES AS DIRECTED BY THE ENGINEER. THIS WORK TO BE SUBSIDIARY TO OTHER BID ITEMS.
10. EROSION CONTROL (BMP'S)  
THE CONTRACTOR SHALL INSTALL AND/OR MAINTAIN EROSION CONTROL METHODS AS SPECIFIED ON SHEET 6. THE FOLLOWING QUANTITIES ARE ESTIMATED AND SHOULD BE CONSIDERED THE MINIMUM EFFORT REQUIRED. INSTALLATION OF THESE BMP'S DOES NOT RELIEVE THE CONTRACTOR OF THE RESPONSIBILITY OF ABATING SOIL EROSION.

BACK OF CURB PROTECTION 240 L.F.

11. THE CONTRACTOR SHALL APPLY TEMPORARY SEED AND MULCH TO ALL UNPAVED AREAS DISTURBED BY HIS CONSTRUCTION OPERATIONS WITHIN 14 DAYS AFTER SUCH OPERATIONS CEASE IN ACCORDANCE WITH THE STANDARD SPECIFICATIONS. SEED SHALL BE ANNUAL RYE APPLIED AT THE RATE OF 4 LBS. PER 1,000 SQUARE FEET. MULCH SHALL BE PRAIRIE HAY APPLIED AT THE RATE OF 15 BALES PER ACRE. THIS WORK SHALL BE PAID FOR AT THE CONTRACT LUMP SUM PRICE BID FOR "TEMPORARY PROJECT SEEDING".
12. THE BID ITEM "SITE RESTORATION" SHALL INCLUDE PERMANENT SEEDING OR SOODING OF DISTURBED AREAS IN ACCORDANCE WITH ADMINISTRATIVE REGULATION 78.
13. CONTRACTOR SHALL PROVIDE, INSTALL, AND MAINTAIN CONSTRUCTION TRAFFIC CONTROL IN ACCORDANCE WITH THE STANDARD SPECIFICATIONS AND THE MUTCD ALL DEVICES SHALL BE REFLECTORIZED. ALL COSTS FOR CONSTRUCTION TRAFFIC CONTROL SHALL BE SUBSIDIARY TO OTHER BID ITEMS.



SCALE: 1" = 100'  
 \* = SET 1/2" REBAR W/PEC CAP UNLESS OTHERWISE NOTED

BM "J" - CHISELED "J" AT THE WEST END OF CONCRETE MEDIAN IN 13TH STREET NORTH ON THE WEST SIDE OF K98 HIGHWAY.  
 ELEV. = 203.39 CITY DATUM  
 1390.79 N.G.V.D.

BM# 51 - RAILROAD SPIKE IN THE EAST FACE OF THE 4TH POWER POLE NORTH OF PINE MEADOWS STREET, EAST SIDE OF GREENWICH ROAD.  
 ELEV. = 198.32 CITY DATUM  
 1385.72 N.G.V.D.

BM# 52 - RAILROAD SPIKE IN THE EAST FACE OF THE 2ND POWER POLE NORTH OF PINE MEADOWS STREET, EAST SIDE OF GREENWICH ROAD.  
 ELEV. = 198.465 CITY DATUM  
 1385.865 N.G.V.D.

BM# 55 - RAILROAD SPIKE IN THE WEST FACE OF THE 3RD POWER POLE SOUTH OF 13TH STREET NORTH AND GREENWICH ROAD, ON THE EAST SIDE OF GREENWICH.  
 ELEV. = 205.87 CITY DATUM  
 1393.07 N.G.V.D.

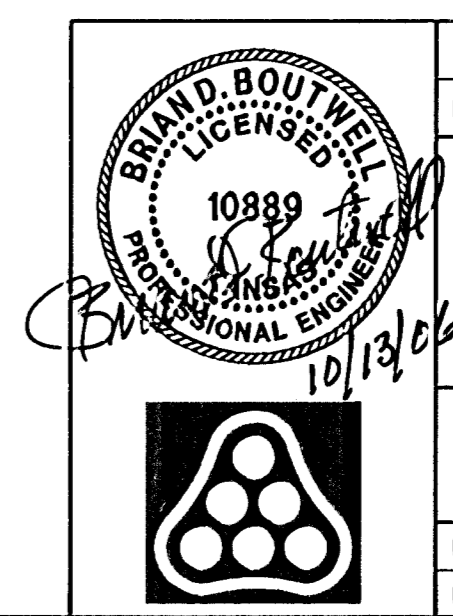
BM# 56 - CHISELED "J" ON BACK OF CURB, AT THE SOUTH END OF CURB ON THE EAST SIDE OF GREENWICH ROAD, 100± SOUTH OF 13TH STREET NORTH.  
 ELEV. = 200.537 CITY DATUM  
 1388.037 N.G.V.D.

BM# 57 - CHISELED "J" ON THE NORTH END OF MEDIAN AT THE WEST ENTRANCE OF THE WARREN THEATRE ON THE SOUTH SIDE OF 13TH STREET NORTH.  
 ELEV. = 200.18 CITY DATUM  
 1388.18 N.G.V.D.

BM# 58 - CHISELED "J" ON THE SOUTH SIDE OF 2ND LIGHT POLE BASE IN THE MEDIAN AT THE EAST ENTRANCE OF THE WARREN THEATRE ON THE SOUTH SIDE OF 13TH STREET NORTH.  
 ELEV. = 202.21 CITY DATUM  
 1389.61 N.G.V.D.

Saved 10-12-2006 1:46:02 PM by BLS  
 File Scale 1:100 10/12/2006 2:06:28 PM by JAT  
 C:\2006\09457\000\09457-000-C-REV1.MXD

S.W. COR. N.W. 1/4  
 SEC.15, T27S, R2E  
 FOUND 3/4" IRON PIPE



No.	Revision	By	Date

THE GATEWAY CENTER 2ND ADDITION  
 13TH ST. N. DECEL LANE  
**KEY MAP AND GENERAL NOTES**  
 JAMES L. ARMOUR, P.E. - CITY ENGINEER  
 CITY OF WICHITA PRIVATE PROJECT NO. 175 PPP  
**Professional Engineering Consultants, P.A.**  
 303 S. TOPEKA • WICHITA, KANSAS 67202  
 316-262-2691 • FAX 316-262-3003

Designed by	BDB, BMM	Job No.	35-06457-000
Drawn by	TAT, BJS	Date	September 2006

Sheet 2 of 12