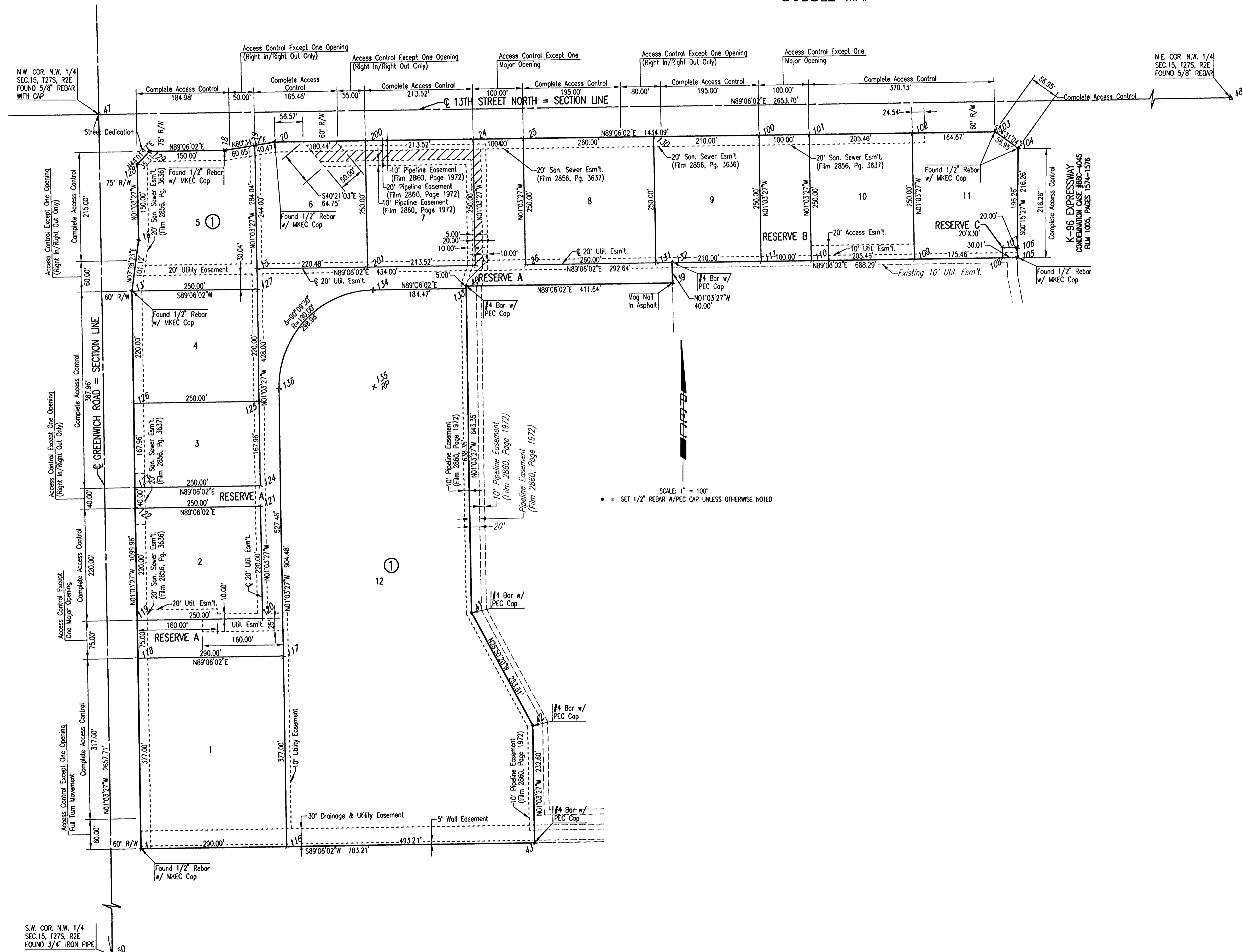


# THE GATEWAY CENTER 2ND ADDITION

## AN ADDITION TO WICHITA, SEDGWICK COUNTY, KANSAS

### BUBBLE MAP



COORDINATE LIST		
POINT	NORTH	EAST
1	1,693,030.8409	1,686,380.1222
13	1,694,130.6161	1,686,359.8191
15	1,694,174.5749	1,686,609.0502
18	1,694,408.5943	1,686,544.7190
19	1,694,418.5310	1,686,604.5465
20	1,694,425.1618	1,686,644.4700
23	1,694,181.3875	1,687,042.9967
24	1,694,431.3459	1,687,038.3822
25	1,694,432.9156	1,687,138.3699
26	1,694,182.9573	1,687,142.9844
39	1,694,147.5575	1,687,436.3260
40	1,694,141.0959	1,687,024.7367
41	1,693,497.8555	1,687,036.6117
42	1,693,275.6953	1,687,158.9423
43	1,693,043.1350	1,687,163.2356
47	1,694,479.6576	1,686,293.3652
48	1,694,521.3126	1,688,946.7336
50	1,691,822.4037	1,686,342.4211
100	1,694,440.2933	1,687,608.3120
101	1,694,441.8630	1,687,708.2997
102	1,694,445.0882	1,687,913.7368
103	1,694,447.6731	1,688,078.3837
104	1,694,414.6147	1,688,124.7603
105	1,694,198.3551	1,688,123.7884
106	1,694,218.3589	1,688,123.8783
107	1,694,217.8879	1,688,093.8759
108	1,694,197.8841	1,688,093.7860
109	1,694,195.1299	1,687,918.3513
110	1,694,191.9047	1,687,712.9142
111	1,694,190.3350	1,687,612.9265
116	1,693,035.3931	1,686,670.0876
117	1,693,412.3303	1,686,663.1289
118	1,693,407.7781	1,686,373.1635
119	1,693,482.7656	1,686,371.7792
120	1,693,486.6899	1,686,621.7493
121	1,693,706.6533	1,686,617.6886
122	1,693,702.7290	1,686,367.7184
123	1,693,742.7223	1,686,366.9801
124	1,693,746.6466	1,686,616.9502
125	1,693,914.5770	1,686,613.8500
126	1,693,910.6527	1,686,363.8799
127	1,694,134.5403	1,686,609.7893
128	1,694,380.8516	1,686,370.2020
129	1,694,406.2398	1,686,394.7375
130	1,694,436.9969	1,687,398.3378
131	1,694,187.0385	1,687,402.9524
132	1,694,187.5509	1,687,435.5878
133	1,694,136.0968	1,687,024.8290
134	1,694,133.2010	1,686,840.3779
135	1,693,943.2244	1,686,843.3604
136	1,693,939.7174	1,686,653.3927
200	1,694,427.9942	1,686,824.8885
201	1,694,178.0359	1,686,829.5030

×100 = COORDINATE POINT NO.

Sheet 10-12-2008 1:48:38 PM by BJS  
 Project 100-10-12-2006 2:06:27 PM by TAT  
 C:\2008\06\27\1000\0607-000-C-TMNL-PLA

S.W. COR. N.W. 1/4  
 SEC.15, T27S, R2E  
 FOUND 3/4" IRON PIPE

No.	Revision	By	Date
THE GATEWAY CENTER 2ND ADDITION 13TH ST. N. DECEL LANE <b>PLAT</b> JAMES L. ARMOUR, P.E. - CITY ENGINEER CITY OF WICHITA PRIVATE PROJECT NO. 175 PPP <b>Professional Engineering Consultants, P.A.</b> 303 S. TOPEKA - WICHITA, KANSAS 67202 316-262-2691 • FAX 316-262-3003			
Designed by	BDB, BMM	Job No.	35-06457-000
Drawn by	TAT, BJS	Date	September 2006
			Sheet 3 of 12

