

SITE BENCHMARK
 "□" Cut on Top of Curb
 Along 34th Street North,
 150' East of SW Corner of
 Lot 7, Comotara Industrial
 Park Fifth Addition.
 Elev. = 1419.19 M.S.L.

SITE BENCHMARK:
 "□" Cut on Top
 of Curb
 Elev. = 1419.19 M.S.L.

CAUTION!
 Ex. UG Gas
 crossing.
 Depths Unknown.

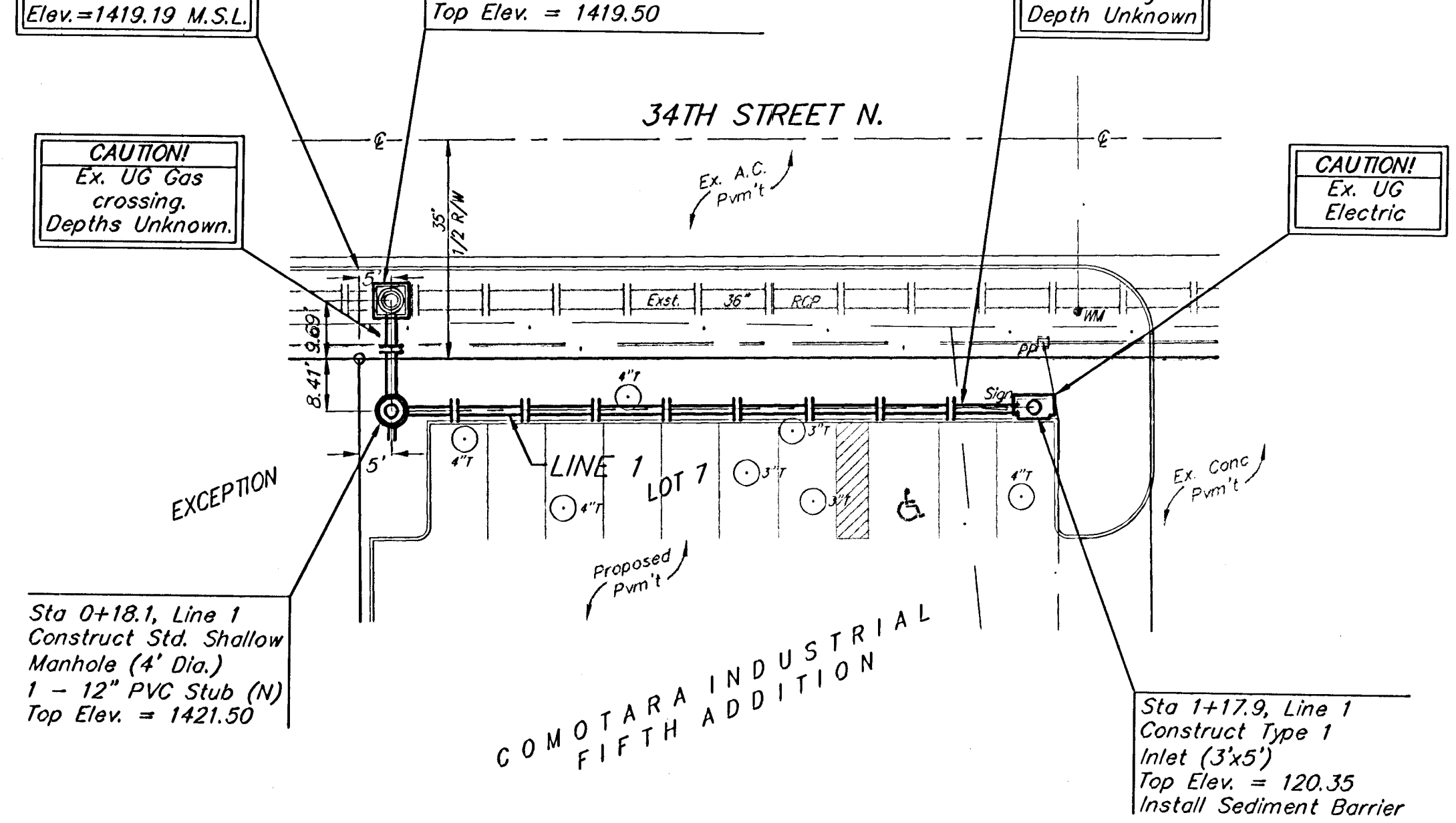
Sta 0+00, Begin Line 1
 Construct Std. Reinf. Conc.
 Manhole over Existing 36"
 RCP (5.5'x5.5' O.D.)
 Remove 18.1 L.F. Ex. 8" SWS
 Top Elev. = 1419.50

CAUTION!
 Ex. UG Gas
 Crossing
 Depth Unknown

CAUTION!
 Ex. UG
 Electric

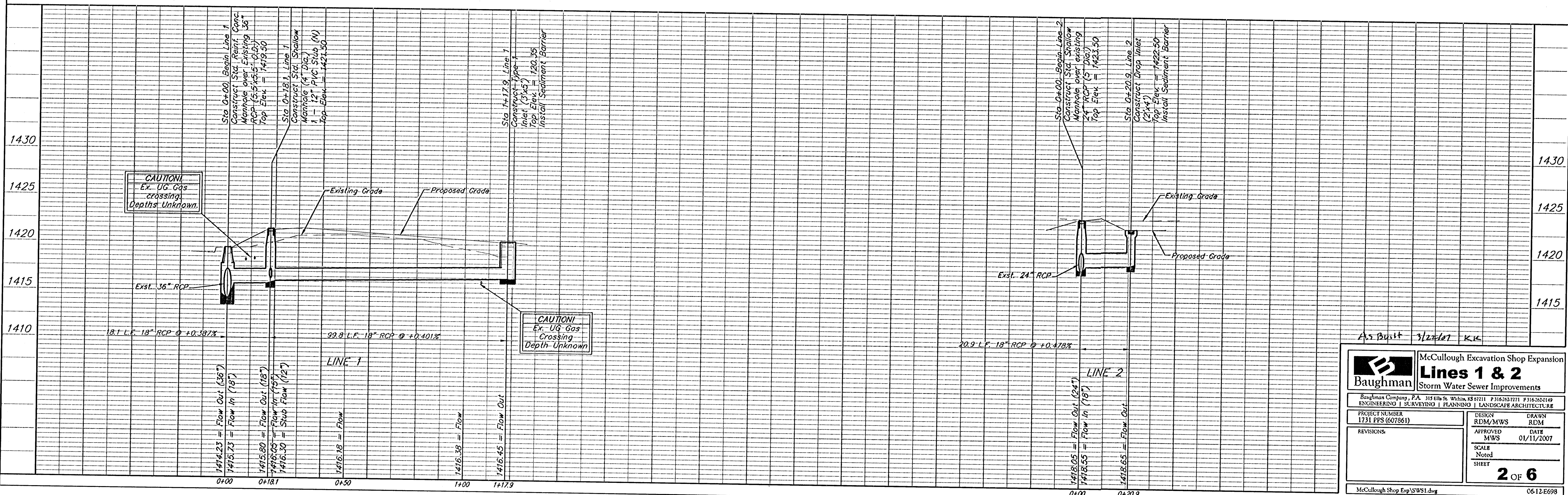
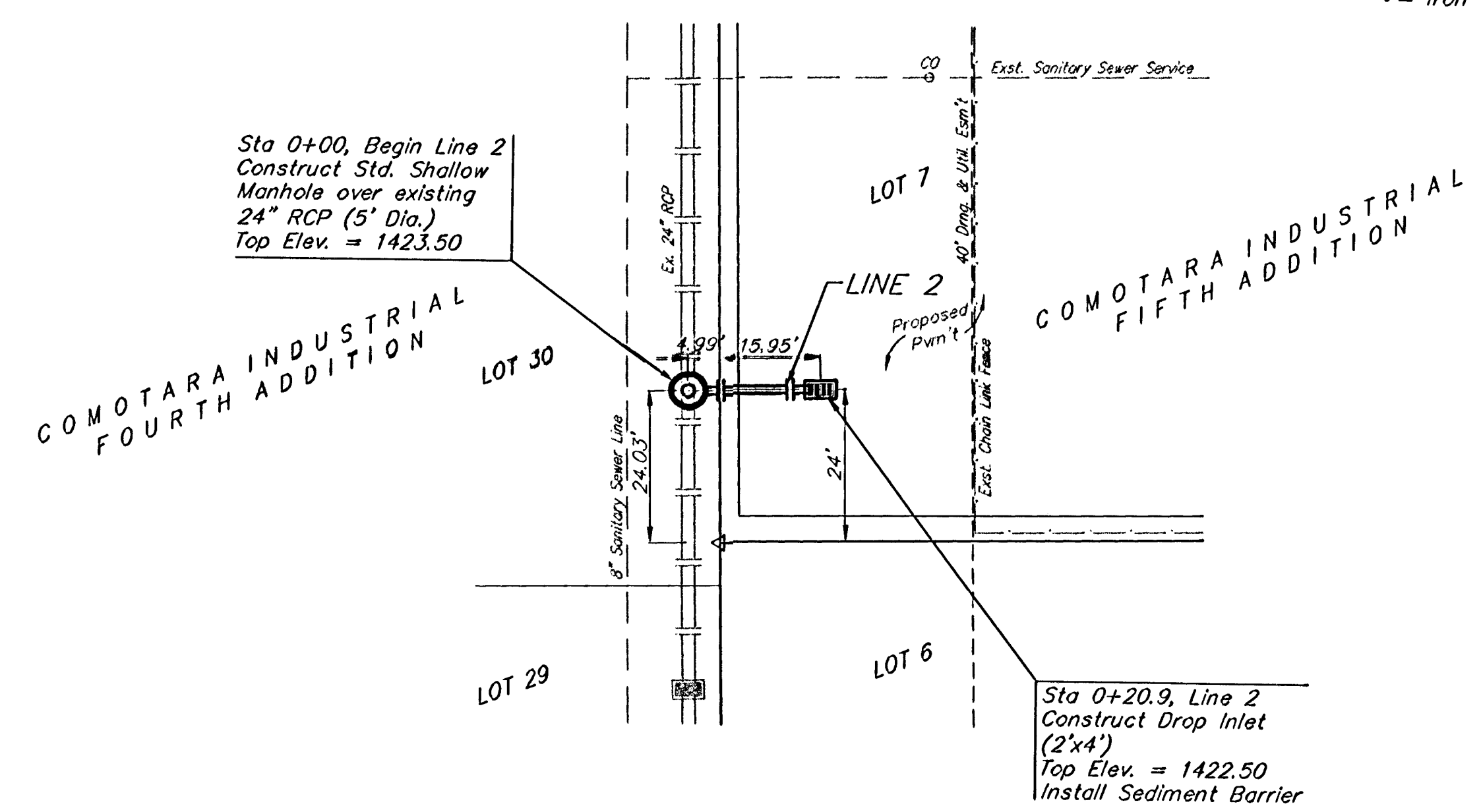
Sta 0+18.1, Line 1
 Construct Std. Shallow
 Manhole (4' Dia.)
 1 - 12" PVC Stub (N)
 Top Elev. = 1421.50

Sta 1+17.9, Line 1
 Construct Type 1
 Inlet (3'x5')
 Top Elev. = 120.35
 Install Sediment Barrier



Sta 0+00, Begin Line 2
 Construct Std. Shallow
 Manhole over existing
 24" RCP (5' Dia.)
 Top Elev. = 1423.50

Sta 0+20.9, Line 2
 Construct Drop Inlet
 (2'x4')
 Top Elev. = 1422.50
 Install Sediment Barrier



As Built 3/22/07 KIC

Baughman McCullough Excavation Shop Expansion
Lines 1 & 2
 Storm Water Sewer Improvements

Baughman Company, P.A. 315 Elm St. Woburn, MA 02158 P3162827711 P3162820149
 ENGINEERING | SURVEYING | PLANNING | LANDSCAPE ARCHITECTURE

PROJECT NUMBER 1731 PPS (607861)	DESIGN RDM/MWS	DRAWN RDM
REVISIONS:	APPROVED MWS	DATE 01/11/2007
SCALE Noted		2 OF 6
SHEET		

McCullough Shop Exp/SWS1.dwg 06-12-E698